

Volume 18, Issue 26
May 25, 2024

“Trials” and Tribulations

UNITED STATES BRIDGE CHAMPIONSHIPS

Senior USBC Semi-Finals

* Wolfson Set #7 score includes cross-imp value for Board 45 which was only played at one table of the match

TEAM	IMPs Total	SET #1	SET #2	SET #3	SET #4	SET #5	SET #6	SET #7	SET #8	Penalty (IMPs)
Wolfson - wins tie	247.75	42	39	14	24	44	21	30.75	35	-2
Tulin	209	2	16	28	48	21	41	25	28	

Lall - wins tie	222	17	41	15	28	16	42	38	25	
Goodman	169	22	15	19	19	34	14	16	30	

USBF President
Aaron Silverstein
USBF Vice President
Steve Garner
USBF COO & Secretary
Jan Martel
USBF CFO & Treasurer
Max Schireson
USBF Recorder
Jack Oest
Chief Communications Officer
Suzi Subeck

Directors
McKenzie Myers, DIC
Ken Horwedel
Chris Wiegand

Tournament Organizer
Jan Martel
Software Expert
Al Hollander
VuGraph Organizers
Rob Barrington

Appeals Administrator
Suzi Subeck, Chairman

Appeals Panel:
Wafik Abdou
Dana Berkowitz
Cheri Bjerkan
Gary Cohler
Rich DeMartino
Ish DelMonte
Mitch Dunitz
Marty Fleisher
Ron Gerard
Marty Hirschman
George Jacobs
Ralph Katz
Bobby Levin
Chip Martel
Eric Rodwell
Danny Sprung
Josh Stark
Adam Wildavsky

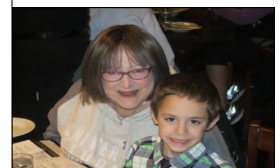
Bulletin Editor
Suzi Subeck
Hospitality
Julie Arbit
Marie-France Benoit

Women's USBC - 2024

Final (180 boards)		Set score of form "Ax" or "Rx" indicates pending Appeal or Ruling. IMPs Total may change.													
23-May-2024		The colored score boxes indicate the team with seating rights for that segment of play.													
#	TEAM	IMPs Total	SET #1	SET #2	SET #3	SET #4	SET #5	SET #6	SET #7	SET #8	SET #9	SET #10	SET #11	SET #12	Penalty (IMPs)
1	Baker	272	25	58	28	44	30	17	47	23					
2	Cooper	201	32	2	3	12	22	34	54	42					

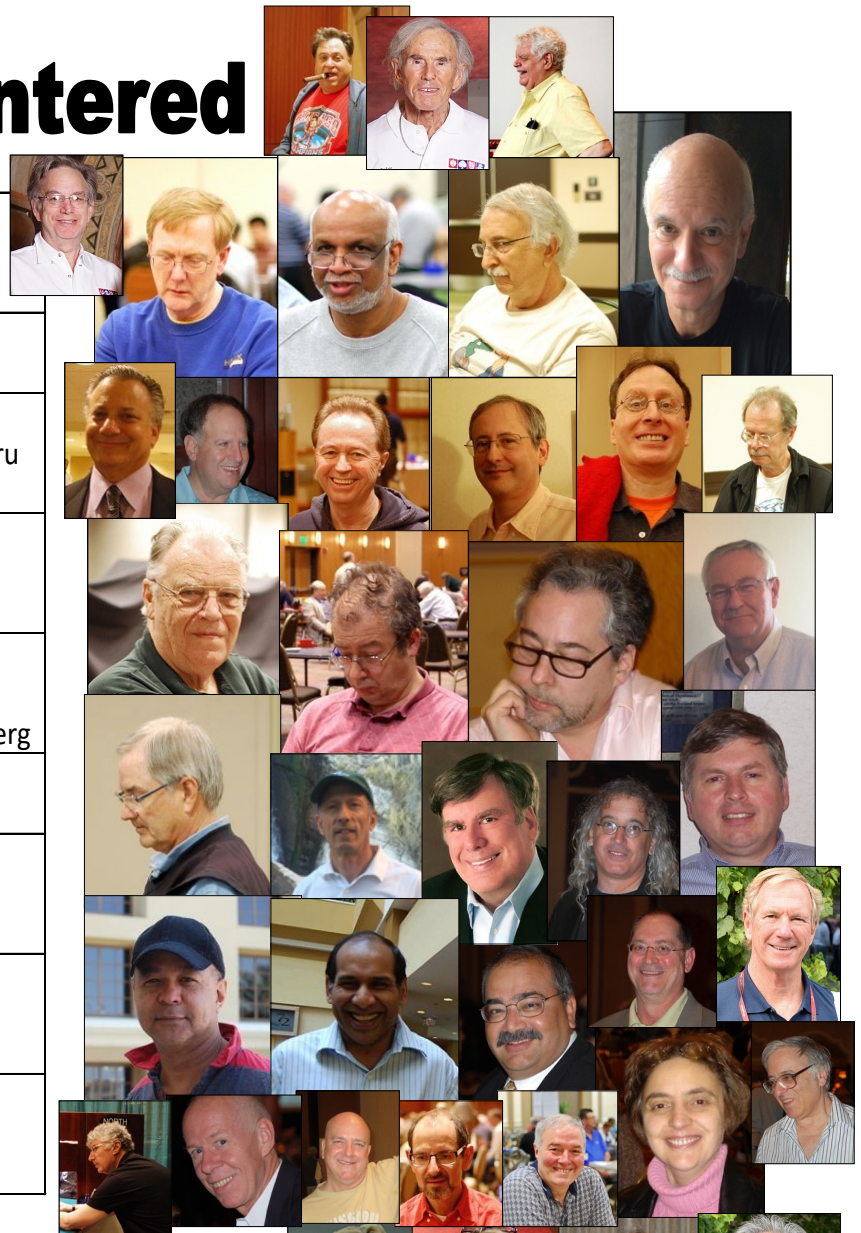
Lew Stansby passed away last night. See pages 21 and 22 for our tribute to his memory. The USBF extends sincere condolences to Joanna and Rick. Lou was a great player and a kind volunteer. He meant the world to us and we hope your memories will bring you peace and contentment.

Ed. Note: With delayed broadcasting, it is challenging to watch every hand for write ups. If anyone has a particularly interesting hand, please send me the board # & match # with any important details. I will do my best to review and include it. Email to stansubeck@prodigy.net.
Thank you!



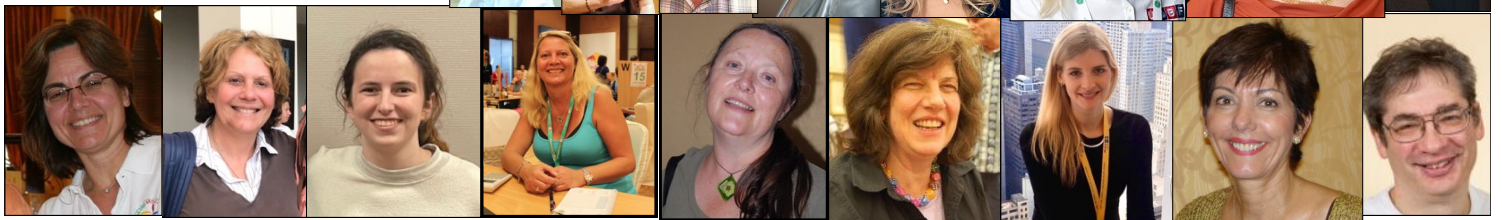
Senior Teams Entered

Aker	Jeff Aker, Capt John Lusky Barry Rigal	Allan Falk Glenn Milgrim Ron Rubin
Cappelli	Bob Cappelli, Capt Bob Bitterman	Mark Aquino Mark Bendure
Goodman	Andy Goodman, Capt Pratap Rajadhyaksha Ron Smith	Mike Passell Venkatrao Koneru Billy Cohen
Hamman	Bob Hamman, Capt Doug Doub John Schermer	Neil Chambers Adam Wildavsky Neil Silverman
Lall	Hemant Lall, Capt Eric Rodwell Zia Mahmood	Reese Milner Bobby Levin Michael Rosenberg
Reynolds	Tom Reynolds, Capt Bernie Greenspan	Lance Kerr Fred Schenker
Simson	Doug Simson, Capt Jim Krekorian Steve Beatty	Curtis Cheek Peter Weichsel Fred Stewart
Tulin	Gary Cohler, Capt Alan Sontag Kit Woolsey	Stan Tulin Ralph Katz Bart Bramley
Wolfson	Jeff Wolfson, Capt David Berkowitz Mike Becker	Steve Garner Michael Kamil



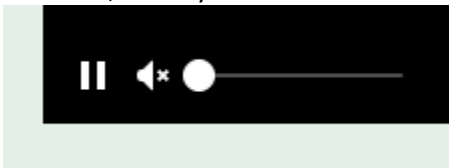
Women's Teams Entered

Baker	Lynn Baker Kerri Sanborn Cecilia Dwyer Rimstedt Sam Dinkin, NPC	Olivia Schireson Jill Meyers Sandra Rimstedt
Cooper	Kitty Cooper, Capt Linda Lewis Rozanne Pollack	Lynne Feldman Disa Eythorsdottir Cheri Bjerkan



2024 USBCs Kibitzing - There will be delayed kibitzing for all of the 2024 USBCs on LoveBridge

You can follow the USBC on the <https://vugraph.lovebridge.com/> website. If you get to the voice commentary and there is no sound, you need to "unmute." When you first get to the page, there is a small icon of a speaker in the middle of your screen with an x on it. Click there to unmute. If you miss that icon, move your cursor to the bottom left of the screen and you should see a something like this:



Click on the speaker to unmute.

Vugraph is delayed for 30 minutes or until all tables have completed play on a board, whichever is later.

Kibitzing Schedule (EDT)

For all KO days of the 2024 USBCs, kibitzing times will be :

Segment 1: 11:30 am EDT; Segment 2: 1:45 pm EDT

BREAK

Segment 3: 5:00 pm EDT; Segment 4: 7:15 pm EDT

For Round Robin days, each kibitzing segment will start 30 minutes after play starts. No voice for RR's. To listen to commentary, search for the TV icon! It will send you to the page where you can choose from the available live commentators. If it doesn't do anything, no one is commenting.

Deep Involvement: Choose the "Match view" at the starting page of your event. Your screen will be divided into 4 small screens – 2 of them showing the 2 tables of the match you choose, the other 2 having the scoresheet for your match and the current scores of the other matches. In the 2x2 view you can personalize the content in all your windows. (The 2x2 view is not available on mobiles.)

Think together!

When watching a table, click on a name and choose "Kibitz". Instead of seeing all 4 hands, you will see what the player sees, and you can decide what you would do.

More Information:

Be well informed and tell your friends: while following the play, you can click many items. The image of the sticker with the number of the board (upper right) takes you to the results of the board, in the bottom right corner, the arrow takes you to the scoresheet, the DDS shows the double dummy analyses, beside that there is a button for the other table of the same match, at the top left corner you can see the bidding with alerts and the explanations (mouse over), the tricks already played, and the double dummy analysis for the available number of tricks with the par score.

Navigation icons:

While surfing here and there in the vugraph, or amongst the archive sessions, there are icons to help you. You can always go back to the main page with the "house" or to the standings with the "scores". If you cannot see the icons, move your mouse, or touch your screen and they pop up immediately. There is a built-in back button because the back button of your browser will always take you to the starting page. If this is not what you wanted, push next in your browser and you can continue where you were.

Replay:

After the event you can find every board from every table easily. While replaying the hands, the only surprise can be the way "next board" button works. If you have arrived from a scoresheet, it navigates through the scoresheet. If you have arrived from a screen where the results were shown for a given board, the same buttons move you through the list.



The reception
is awful,
Really a mess,
Now I won't know
Who won the fi-
nesse!



Kibitzing...

An old man and a 20 year old are paired together at a golf tournament. They're playing a long par 5 that dog legs around some tall trees.

As the 20 year old sets up his tee shot to hit onto the fairway the old man notes "when I was your age we used to hit over the trees - not around to the side."

So the 20 year old readjusts and tries to hit over the trees - but can't clear them and loses his ball. He tries again and loses that one too...

Then the old man says "of course, when I was your age, the trees were only 6 foot tall."

My grandfather says to me, he goes, "when I was a boy you could walk into a grocery store with two dollars in your pocket and walk out with a loaf of bread, a dozen eggs, even a little butter!"

He says, "but now, these days, too many damn cameras."

An old Italian man lived alone in New Jersey. He wanted to plant his annual tomato garden; but it was very difficult work as the ground was hard. His only son, Vincent, who used to help him, was in prison. The old man wrote a letter to his son and described his predicament:

Dear Vincent,

I am feeling pretty sad, because it looks like wont be able to plant my tomato garden this year. I'm just getting too old to be digging up a garden plot. know if you were here my troubles would be over. I know you would be happy to dig the plot for me, like in the old days. Love, Papa

A few days later he received this letter from his son:

Dear Pop, Don't dig up that garden. That's where the bodies are buried. Love, Vinnie

At 6 am the next morning, FBI agents and local police arrived and dug up the entire area without finding any bodies. They apologized to the old man and left. That same day the old man received another letter from his son.

Dear Pop, Go ahead and plant the tomatoes now. That's the best could do under the circumstances. Love, Vinnie

How did you get roped into doing this?

A young boy enters a barber shop and the barber whispers to his customer, "This is the dumbest kid in the world. Watch while I prove it to you." The barber puts a dollar bill in one hand and two quarters in the other, then calls the boy over and asks, "Which do you want, son?" The boy takes the quarters and leaves. "What did I tell you?" said the barber. "That kid never learns!" Later, when the customer leaves, he sees the same young boy coming out of the ice cream parlor. "Hey, son! May I ask you a question? Why did you take the quarters instead of the dollar bill?" The boy licked his cone and replied: "Because the day I take the dollar the game is over!"

3 boys 5, 7, and 8 years old go to the checkout in a store and put 3 chocolate bars on the counter and a box of tampons. The clerk questions the oldest boy about why he is buying tampons.

He replies, "They're not for me. They're for Billy here. We saw a TV commercial that said if you wear them you can swim or ride a bike and Billy can't do either yet."

A thief enters a house at night, intending on robbing the entire place. In the dark, he starts hearing:

"Jesus is watching you... Jesus is watching you..."

Panicked, he looks around for the source of the whisper, when he finds a parrot in a cage, with the name "Moses" pinned on it. Relieved, he says:

"Who's the idiot who named a parrot Moses?"

The parrot answers:

"The same idiot that named the pitbull Jesus".



(Continued on page 6)

Senior Schedule

SENIOR SCHEDULE			
Round Robin or KO - Schedule will depend on number of teams			
Day	Date	Time	Boards
Sunday	May 19		
Monday	May 20		
Quarterfinal			
Tuesday	May 21	10:00 - 12:00 12:15 - 2:15 3:30 - 5:30 5:45 - 7:45	Segment 1 Boards 1-15 Segment 2 Boards 16-30 75 minute Break Segment 3 Boards 31-45 Segment 4 Boards 46-60
Wednesday	May 22	10:00 - 12:00 12:15 - 2:15 3:30 - 5:30 5:45 - 7:45	Segment 5 Boards 1-15 Segment 6 Boards 16-30 75 minute Break Segment 7 Boards 31-45 Segment 8 Boards 46-60
Semifinal			
Thursday	May 23	10:00 - 12:00 12:15 - 2:15 3:30 - 5:30 5:45 - 7:45	Segment 1 Boards 1-15 Segment 2 Boards 16-30 75 minute Break Segment 3 Boards 31-45 Segment 4 Boards 46-60
Friday	May 24	10:00 - 12:00 12:15 - 2:15 3:30 - 5:30 5:45 - 7:45	Segment 5 Boards 1-15 Segment 6 Boards 16-30 75 minute Break Segment 7 Boards 31-45 Segment 8 Boards 46-60
Final			
Saturday	May 25	10:00 - 12:00 12:15 - 2:15 3:30 - 5:30 5:45 - 7:45	Segment 1 Boards 1-15 Segment 2 Boards 16-30 75 minute Break Segment 3 Boards 31-45 Segment 4 Boards 46-60
Sunday	May 26	10:00 - 12:00 12:15 - 2:15 3:30 - 5:30 5:45 - 7:45	Segment 5 Boards 1-15 Segment 6 Boards 16-30 75 minute Break Segment 7 Boards 31-45 Segment 8 Boards 46-60

No Electronic Devices are Permitted in the Playing Area.

This applies to players AND kibitzers.

Severe penalties will be assessed for violation of this rule.

Please turn off all cell phones and check them at the door.

The USBF reserves the right to wad anyone entering the playing field.



Lovebridge practice sessions			
Day	Date	Time (CDT)	
Tuesday	April 30	5:00 PM - 7:00 PM	
Thursday	May 9	5:00 PM - 7:00 PM	
Saturday	May 18	5:00 PM - 7:00 PM	
Wednesday	May 22	5:00 PM - 7:00 PM	

Location: TBD

PRE-TOURNAMENT CAPTAINS & PLAYERS MEETINGS			
On Zoom			
Event	Day	Date	Time (CDT)
Open	Tuesday	April 30	9:00 PM
Mixed	Thursday	May 9	9:00 PM
Senior	Saturday	May 18	9:00 PM
Women's	Monday or Wednesday	May 20 or 22	9:00 PM

US\$19.95 | GBP 15.95
978-1-77140-264-4

Available to order today from your favourite bookstore.

Beth Palmer WOMEN'S SCHEDULE			
Final - 3 days, 180 boards			
Day	Date	Time	Boards
Thursday	May 23	10:00 - 12:00 12:15 - 2:15 3:30 - 5:30 5:45 - 7:45	Segment 1 Boards 1-15 Segment 2 Boards 16-30 75 minute Break Segment 3 Boards 31-45 Segment 4 Boards 46-60
Friday	May 24	10:00 - 12:00 12:15 - 2:15 3:30 - 5:30 5:45 - 7:45	Segment 5 Boards 1-15 Segment 6 Boards 16-30 75 minute Break Segment 7 Boards 31-45 Segment 8 Boards 46-60
Saturday	May 25	10:00 - 12:00 12:15 - 2:15 3:30 - 5:30 5:45 - 7:45	Segment 9 Boards 1-15 Segment 10 Boards 16-30 75 minute Break Segment 11 Boards 31-45 Segment 12 Boards 46-60

Beth Palmer Women's Schedule

The Art of Becoming A Top Bridge Player

Samantha Punch with Tim Rees

Foreword by Jeff Meckstroth

2024 USBCs Hospitality

We are returning to our pre-pandemic hospitality, with the hospitality suite (room 2321) open most of the day for socializing, Vugraph, and snacks. We will be providing breakfast and lunch each **day of play**. Marie-France Benoit will be our lead hostess, with help from Jacob Morgan and Julie Arbit, who makes the best guacamole. If you're at the tournament and can volunteer to help with hospitality (pick up items at Costco or nearby stores or restaurants, preparing food) please let Jan or Marie-France know.

Breakfast: From **8:30-10:30** There will be the usual breakfast food: cereal, bagels, toast, salmon, fruit, juice, coffee and tea. For those who prefer Keurig coffee, that will be available. So long as the suite doesn't become too crowded, you are welcome to eat there. No masking requirement.

Lunch: On the first four days of each event we will be serving a buffet lunch in a hotel banquet room, usually the Slate and Cyan rooms at the front of the hotel; we will have signs in the Player Break Room and Hospitality Suite with daily location. The hotel will be supplying what they do best: salads and chips. We will be bringing in 2 or 3 hot dishes from a local restaurant each day. There should be enough room for you to eat in the hotel banquet room, but you are welcome to take food from there to an outside table or to your hotel room. Lunch will be served from about half an hour before the morning session is supposed to end until about half an hour after the afternoon session starts.

After the first 4 days of each event, lunch will be available in the hospitality suite at the break. There will be a main dish (sandwiches, chicken, main dish salads, pizza) as well as tuna salad, green salad, cheese, fruit, berries, cookies or other desserts. Water and soft drinks will be available in refrigerators. As with breakfast, you are welcome to eat in the hospitality suite unless it is too crowded.

Let us know if you have specific needs. Our hosts will do their very best to accommodate you.

Playing Rooms & Player's Break Room

We welcome Marge Morgan, mother of Jacob, to the venue. Marge will help Marie-France.

We will have bottled water in the Player's Break Room (1321), as well as soft drinks, Nespresso, some packaged snacks, and some fruit. Please keep your voices down in the Break Room where we are working.

Masks will be required in playing rooms **only if your screenmate asks you to wear one**. You do not have to put on a mask when you summon a director or ask for coffee, water or an escort outside to smoke.



Marie-France



Marge Morgan

(Continued from page 4)

This young blond decided she wanted to pay off all her blills. She started going door to door in her neighborhood asking if anyone needed something done for a little money. She knocks on her first door. An elderly man answers. "Hello. I m trying to make some extra money to pay off bills. Do you have any odd jobs you need done" The old man replies, "Well, you can paint the porch". She jumps for joy and says 'Great! How much will you pay? " " One hundred dollars", said the old man. " The paint, rollers, and brushes are in the garage. Knock on the door when you're done and I ll pay you ". The old man goes back inside as the young blond bounds off to the garage. " Does that poor girl know our porch wraps around the whole house? ", asks the old man's wife. " Of course she does. You' ve heard too many dumb blond jokes. Just at that moment there was a knock at the door. The old man opens it to find a smiling face, "I'm done. And I had enough paint to give it two coats. By the way mister, that's a Lexus. Not a Porche.

A guy said to God, "God, is it true that to you a billion years is like a second?" God said yes. The guy said, "God, is it true that to you a billion dollars is like a penny?" God said yes. The guy said, "God, can I have a penny?" God said, "Sure, just a second."



(Continued on page 7)

						2		1
		7	3			4		9
9				8	7			
6		2				5		3
	4				2			
			1					4
3			7		5			6
	9			2	8			

Sudoku 1

(Continued from page 6)

A murderer was secured to the electric chair, about to be executed.

The chaplain approached him and asked, "Do you have any last requests?"

"Yes," replied the murderer. "Would you hold my hand?"

A man is in the emergency room after an horrific accident. A surgeon is examining his hand. He had already lost three of his fingers and the rest of his hand was in a bad way. "Doc! I'm a taxi driver. Will I still be able to drive with this hand?" "Maybe. But I wouldn't count on it."

Bono and Edge walk into a bar. Barman says, "Not U2 again."

Me: I was buying bananas at the store the other day.

Clerk: You know they're not making bananas any longer?

Me: slightly alarmed "They're not?"

Clerk: No, they're long enough already.



Hard Sudoku

Sudoku Solutions on Page 12

Sudoku 2

	4							
1	6	9			7	8		
		7			1	9	3	
8				5				
		1		9				
	2		4					
9			8				2	
		5		6				3
7								9

Please be "scent" sitive! Many players have allergies and have trouble breathing when perfumed aromas are present! Thank you!!



Puzzle Page ...

Deserts of the World

Find and circle all of the deserts that are hidden in the grid.
The remaining letters spell a secret message.

D U F E N A E A D U J A N A U H A U H I H C
 A R C T I C G S D N A S A B I H A W N T A E
 N G T R C B A R U J D T N A M I B L A I C M
 I A R A G O B I E V A J O M S A H A R A K P
 A R I E N O R T H A M E R I C A N T O G A T
 I S I S A A A S J T T H T E L U M S N U R Y
 A R O Y S T M M G A E B S I A T U A O B O Q
 L N D D N U V I A N L Y A E H E K O S A O U
 E A S N R K R I A C K A T S U W A C E N R A
 C Y T A T O C I C H A A P L I L R C I N T R
 O B H S I E B O S T L T B A A N A I W T N T
 L I A T A U Y E R P O I A G O M K T E A O E
 O L R A N O L E N K N R U R U L S N K G D R
 R B A E I O C O L D C A I K A E E A N R D D
 A A B R S M S N U L J A L A C R M L I A A S
 D Y I G C P A S A I A Y L H E A L T N N V S
 O U A A M E V R R E Z V U B L S C A A D E A
 G D N O T A S A A Y R R H K R H I K R B G N
 A A H N L F I E K N A T A T A A I D A A E R
 D T O L G I B S O N J T I L A L M A H R N E
 E M E K A L A H A R I A B R S E A L K A P B
 N Y O L S I M P S O N I B A E R D D A E S A
 E O B I G N A R P A T A G O N I A N R T T T



Make hearts trump
 And I will be da
 man
 And I will win more
 tricks
 When and where I
 can!

ARABIAN
 ARCTIC
 ATACAMA
 ATLANTIC COASTAL
 BAYUDA
 BLACK ROCK
 BLUE
 CHALBI
 CHIHUAHUA
 COLORADO
 DANAKIL
 DEATH VALLEY
 DJURAB
 EMPTY QUARTER
 ERITREAN COASTAL

GIBSON
 GOBI
 GRAND BARA
 GREAT BASIN
 GREATSANDY
 GREAT VICTORIA
 GUBAN
 INDUS VALLEY
 JALAPAO
 JUDAEAN
 KALAHARI
 KARAKUM
 KAROO
 KHARAN
 KYZYLKUM

LAGUAJIRA
 LIBYAN
 MARANJAB
 MOJAVE
 MONTE
 NAMIB
 NEFUD
 NEGEV
 NORTH AMERICAN
 NUBIAN
 NYIRI
 OGADEN
 OLESHKY
 ORDOS
 PATAGONIAN

RAMLAT
 RANGIBO
 RUSSIAN
 SAHARA
 SECHURA
 SIMPSON
 SINAI
 SONORAN
 TABERNAS
 TAKLAMAKAN
 TANAMI
 TENERE
 THOMPSON PLATEAU
 WAHIBA SANDS
 WHITE

A man sees a snail climbing a cherry tree in the middle of winter.
 He asks it: "Snail, what are you doing? It's freezing out here"
 "I'm climbing this tree so I can eat some cherries "
 "Silly snail, there's no cherries in the tree, it's the middle of winter!"
 "They'll be there by the time I reach the top"

The Doctor gave a man 6 months to live. He couldn't pay his bill so he gave him another 6 months.

I told the Doctor I broke my leg in two places. He said to stay away from those two places.

I called my Lawyer and asked him if I could ask him two questions. He said sure. What's the second question.

Some people ask the secret of our long marriage. We take time to go to a restaurant two times a week. A little candle light, soft music, and dancing. She goes Tuesdays. I go Fridays.

Meet the Players



From The Actuary • October 1997

Stan Tulin's actuarial career reads like an "Indiana Jones" adventure viewed through a Wall Street lens.

Tulin hasn't hunted valuable artifacts, soared over rainforests, or staged miraculous escapes. What he has done is wander into a major actuarial firm at the age of 17, pass his exams by the age of 25, consult for all three antagonists in a complex bankruptcy case, work on the first demutualization of a major New York-based firm under the state's new demutualization laws, and, finally, leave consulting for a senior executive post with the newly demutualized insurer. An early beginning ... Like many actuaries, Tulin excelled at mathematics in high school. Unlike many, he also began his career in high school. "Someone made a presentation to us on careers in mathematics, and I needed a summer job. So I started calling consulting actuarial firms because that was all that was in the Yellow Pages under 'actuary.' I had no idea what they did," said Tulin. He landed an interview with M&R in Philadelphia, Tulin's home town. "I think they had all of three people," he said. "They needed somebody to help them part time, and I was cheap. So I was hired. And that began my career in the profession. I learned about it by working in it." Tulin began taking exams that year, graduated from high school, "did nothing other than a modest look at college," and finished his exams at age 25.

Actuaries make good bridge players.

Looking Stan up in the Actuary, I found this gem:

The Rule of 11

In the Stone Age, as now, all 52 cards were dealt. The four players were designated wind, earth, water, and fire, and they played clockwise in that order. Wind and water were partners and earth and fire were partners. A new person was designated as wind with each new hand (or new deal), which consisted of 13 "tricks." (This was a forerunner to the bridge game now called "Chicago.") There was no "trump" suit. It was required that wind begin the play of a new deal, and it was the custom for wind to lead the "fourth highest" card from his longest suit. Then Earth's cards were placed face up on the ground for all to see. (For some reason we now refer to these "down-to-earth" cards as the "dummy.") Fire would choose which of earth's cards to play. The object was to win the most number of tricks. Water and fire would each use the "Rule of 10" to calculate the number of cards that were larger in the suit that was led. The Rule of 10 was to subtract the pip value (number) of the card led from 10 (e.g. if the 6 was led, then there would only be four higher cards outstanding in the other three hands, as $10 - 6 = 4$). If water could see one higher card on the ground, and water had three of the four higher cards, then water knew that fire had none.) The Rule of 10 was easy to remember, as most people had 10 fingers. Modern man now uses the Rule of 11 because the cards are, in effect, numbered 2 through 14. It is conceivable that an actuary was involved in this new numbering system. If the Society of Actuaries ever requires 13 exams, the exams should be numbered 2 through ace in an attempt to recapture the bridge-playing actuary. The public could then refer to an actuary who has completed all of the exams as an "Ace."

Stan, who lives in Boca Raton, has won such NABC titles as the 2023 Jacoby Swiss Teams and the Lebhar IMP Pairs and the 2016 Mitchell BAM Teams. Stan is playing in the Senior Teams here on the Tulin team with Gary Cohler, Ralph Katz, Alan Sontag, Kit Woolsey and Bart Bramley.

Logic Puzzle Page

		Cities					Counties					Mayors				
		Brisbane	Danville	Hayfork	Kingsburg	Northport	Essex	Hampshire	Middlesex	Plymouth	Worcester	Bes Buckley	Cal Compton	Gil Gonzales	Nora Nolan	Vic Vazquez
Populations	37,000															
	40,000															
	43,000															
	46,000															
	49,000															
Mayors	Bes Buckley															
	Cal Compton															
	Gil Gonzales															
	Nora Nolan															
	Vic Vazquez															
Counties	Essex															
	Hampshire															
	Middlesex															
	Plymouth															
	Worcester															

**Answer
on page 12**

Populations	Cities	Counties	Mayors
37,000			
40,000			
43,000			
46,000			
49,000			

1. The town with a population of 40,000 is either Hayfork or the town whose mayor is Nora Nolan..
2. Neither the city in Middlesex County nor Hayfork is the town with a population of 43,000..
3. Northport doesn't have Cal Compton as its mayor..
4. The city in Hampshire County has 6,000 more people than Kingsburg..
5. Of the town whose mayor is Bes Buckley and the town with a population of 37,000, one is in Worcester County and the other is Kingsburg..
6. The town whose mayor is Nora Nolan has 3,000 more people than Kingsburg..
7. Danville has Bes Buckley as its mayor..
8. The town whose mayor is Cal Compton isn't in Plymouth County..
9. Brisbane is either the town in Plymouth County or the town whose mayor is Nora Nolan..
10. The city in Worcester County has 6,000 more people than the city in Essex County..
11. The city whose mayor is Vic Vazquez isn't in Plymouth County..

Playing Procedures Reviewed For Those Here for the Womens and Seniors

You will be playing on Chromebooks using LoveBridge software. The Chromebooks all have wired mice, which you may choose to use or not. They also have touch screens if you prefer that, and of course integrated keyboards. You will not be able to go to any websites other than the LoveBridge playing site from the playing room Chromebooks.

There will be 2 players in each room, one from each team in the match - North & East together and South & West together. All of the NE rooms are on the first floor; all of the SW rooms are on the second floor.

Because some of you have said that you prefer the opponents' system information on paper in addition to being available on the Chromebooks, we are asking each player to bring a copy of their SSF, convention card, and if relevant the ACBL Multi defense to the table for their opponent. If you need help printing anything, come to room 1321 before you play and one of us will print for you.

After you have finished a segment and scored with your teammates, please check the score on LoveBridge and if you disagree with it, come to room 1321 and so we can sort it out.

Captains:

Your lineup sheet been shared with you. If you can't open it, or don't understand something about it, please let us know.

For the first segment of play each day, the Away team (the team that does not have seating rights for the segment) should tell the Home team their lineup (by email, text, or an entry on the lineup sheet) no later than 8:50 am (70 minutes before play starts), and enter the lineup on their lineup sheet no later than 9:00 am. If you enter your lineup on the lineup sheet before 8:50 am, that will satisfy both requirements. The Home team should give the Away team its lineup by 8:55 am, and should also enter it on the lineup sheet no later than 9:00 am. Of course, if the Away team doesn't communicate its lineup on time, the Home team has more time.

We ask you to enter the lineup on your lineup sheet because that may be the easiest way to give your lineup to your opponent. If you leave your lineup page open on your computer or other device, it will automatically update with the opponent's lineup when they enter it. Also, especially for the first segment of the day, there are often players who come to the office asking where they're supposed to sit and if the lineup is on the lineup sheet, we can direct them.

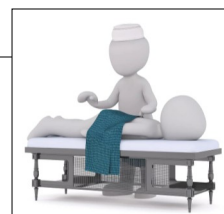
For subsequent segments, you need only notify each other of your lineups (10 minutes before the start of the segment for the Away team, 5 minutes for the Home team), although you are welcome to enter the lineup on the lineup sheet in case one of your players doesn't know where they are supposed to sit and comes to ask us.

Line-Up Procedures

For those of you who are interested, Ela has agreed to come to the Hyatt to provide massages any day that we have 3 or more people who want her. So if you want a massage, please let me know a day or two in advance, including what your timing is, and I'll try to make things work.

For now, Ela said she could come on April 30th for anyone who wants a post-flight, pre-tournament massage. So if you want one, please let me know and tell me what time(s) would work for you.

I think Ela still charges \$100 for an hour. She'll be setting her table up in my room (5117) and will have a key so she can get in and can the let you in when it's your turn. Any questions, let Jan know!



**Massage Therapist
message from Jan**

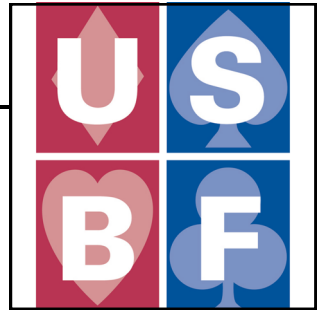
4	9	5	6	2	8	1	3	7
3	8	1	7	4	5	9	6	2
7	2	6	9	1	3	8	4	5
8	5	9	1	3	6	7	2	4
1	4	3	5	7	2	6	9	8
6	7	2	8	9	4	5	1	3
9	1	4	2	8	7	3	5	6
2	6	7	3	5	1	4	8	9
5	3	8	4	6	9	2	7	1

9	6	4	5	3	1	2	8	7
3	8	7	6	2	9	5	4	1
9	3	6	8	7	4	1	2	5
6	2	3	4	1	8	5	9	7
8	4	3	6	9	2	7	1	5
6	8	3	4	8	9	7	2	1
2	5	7	6	8	1	9	3	4
1	6	9	3	4	7	8	5	2
3	4	8	5	2	9	6	7	1

Sudoku Answers Puzzles on Page 7

Answer to Sudoku 1 Answer to Sudoku 2

USBF Supporting Membership



If you don't want to play in the USBF Championships that choose teams to represent the USA in the World Bridge Federation Championships, but do want to aid our events, a **Supporting Membership** can be the perfect way for you to be involved.

A Supporting Membership is \$25 for one year (\$75 for 3 years) and your donation will be used to cover inevitable expenses: attorney fees, accounting fees, website support services, tournament directors, insurance, WBF dues, and vugraph operators.

The USBF is an **all-volunteer** organization.

Our meetings are by conference call and at NABCS. Board members and the organization's officers are not compensated for meetings, travel, or hotel expenses.

(Continued from page 8)

An old woman had two chickens. One got sick. So she made chicken soup out of the other one to help the sick one get well .

A psychiatrist told me I was crazy. I said I wanted a second opinion. He said ok you're ugly too.

A man walks into a dentist office and says, Hey doc, I think I'm a moth.

Dentist says, "well if you think you're a moth why did you walk into a dentist office."

Guy says, "the light was on."

A skeleton walks into a bar and says, I'd like a pitcher of beer and a mop please.

... no bones about it ... this joke is all wet!

Answer to Logic Puzzle On Page 10

49,000	Hayfork	Plymouth	Gil Gonzales
46,000	Danville	Worcester	Bes Buckley
43,000	Northport	Hampshire	Vic Vazquez
40,000	Brisbane	Essex	Nora Nolan
37,000	Kingsburg	Middlesex	Cal Compton

BOARD: 35
DEALER: SOUTH
VULNERABLE: E-W

♠ QJ9
 ♥ AK72
 ♦ AKJ2
 ♣ 96

♠ A743
 ♥ 84
 ♦ T9864
 ♣ Q5

♠ KT86
 ♥ QJT953
 ♦ 7
 ♣ 32

♠ 52
 ♥ 6
 ♦ Q53
 ♣ AKJT874

Par: 460

	♣	♦	♥	♠	N
NS	11	10	7	7	11
EW	0	3	6	6	0

Board 35 from the third segment on Thursday was all on the opening lead.

Two tables in the Seniors reached the level of slam.

Only the lead of a spade will stop 13 tricks. Played from North, it is easy to see why East would lead a high heart every time.

Home team	Visiting team	Room	By	=	IMP		
				NS	EW	Home	Visiting
Wolfson	Tulin	Open	3N	N	♥Q	+4	520
		Closed	6N	N	♥Q	+1	1020
Lall	Goodman	Open	3N	N	♥Q	+4	520
		Closed	6♣	S	♦T	+1	940

Where 6C was played from South, it is surprising that Zia led a diamond rather than his SA. Had he led his ace, Michael Rosenberg would have signaled for him to continue and instead of 9 IMPs to Goodman, it would have been 11 IMPs to Lall.

Where 6NT was played from North, a spade lead from the king could be suicidal. Wherever the SA and SQ are is unknown. A spade could be the only lead to give declarer 12 tricks. A heart is normal! Though... a spade lead here would have turned an 11 IMP win for Tulin into an 11 IMP win for Wolfson.

In the Beth Palmer Women's USBC, both tables played in 3NT from North on this board. Both East players led a high heart and both declarers took 13 tricks.

Baker	Cooper	Open	3N	N	♥J	+4	520
		Closed	3N	N	♥Q	+4	520

In the 4th segment on Thursday, playing Board 54, Bjerkan and Pollack had a Precision auction to get to a perfect heart slam that was missed at the other table.

There was little to the play. Cecilia led the CA and switched to a small trump. Bjerkan won the HQ, played a heart to the ace and claimed 12 tricks.

At the other table, Sanborn and Meyers had a 3-bid auction to settle in game.

1NT was 15-17.
4D was Texas

Meyers took the transfer and played it in game collecting the same 12 tricks as Bjerkan.

Home team	Visiting team	Room	By	=	★	IMP			
						NS	EW	Home	Visiting
Wolfson	Tulin	Open	4♥	S	♣6	+2	480	-	-
		Closed	4♥	S	♦9	+2	480	-	-
Lall	Goodman	Open	4♥	S	♦T	+2	480	-	-
		Closed	4♥	S	♦9	+2	480	-	-

In the Seniors, this board was flat! Neither table in either match tried for slam.

Bjerkan and Pollack should get extra credit for bidding THIS slam (not one off 2 cashing spade tricks ... see page 13) ... None of their male counterparts in the Seniors even pushed to the 5-level! Go ladies!

BOARD: 57
DEALER: NORTH
VULNERABLE: E-W

♠ JT9
 ♥ 962
 ♦ K6
 ♣ QJ986

♠ Q83
 ♥ KT3
 ♦ A985
 ♣ 754

♠ AK75
 ♥ AQJ5
 ♦ QJT3
 ♣ T

♠ 642
 ♥ 874
 ♦ 742
 ♣ AK32

Par: -650

	♣	♦	♥	♠	N
NS	6	2	2	2	4
EW	7	11	11	11	8

Home team	Visiting team	Room	By	=	IMP
		NS	EW	Home	Visiting
Wolfson	Tulin	Open	5♦	W ♠J =	600
		Closed	3N	W ♣J -1	100
Lall	Goodman	Open	3N	W ♣J -1	100
		Closed	3N	W ♣J -1	100

Three of four tables in the Seniors played in 3NT on Board 57 Thursday night. Only Woolsey and Bramley bid the cold diamond game.

Most of the auctions started with 1D by E; 1NT by W; 2NT by E; 3NT by W.

North had an easy club lead which doomed the game to failure right off the top.

HOME CARDS SPLIT

W	N	E	S
PASS	1♣	PASS	
2♣	PASS	2♥	PASS
3♣	PASS	3♦	PASS
3♣	PASS	4♦	PASS
4♥	PASS	5♦	PASS
PASS	PASS		

1C=Precision
 2D=Balanced
 2H=art ask
 3C=4-3-3-3 not 4 H
 3D=ask
 3S=3-3-4-3
 4D=signoff signal

♠ JT9
 ♥ 962
 ♦ K6
 ♣ QJ986

N David Berkowitz

♠ Q83
 ♥ KT3
 ♦ A985
 ♣ 754

W Kit Woolsey

♠ AK75
 ♥ AQJ5
 ♦ QJT3
 ♣ T

E Bart Bramley

♠ 642
 ♥ 874
 ♦ 742
 ♣ AK32

S Steve Garner

WEST 5♦

Berkowitz led the SJ. Woolsey won dummy's ace and took the losing diamond finesse. Berkowitz continued spades to Woolsey's queen. Woolsey pulled one more round of trump and claimed 11 tricks. 12 IMPs to Tulin

In the Beth Palmer Women's, both tables played in 3NT from West and received the lead of the CQ for an easy down one! Push board!

(A quirky comment from the Editor: It is interesting that all 3 pairs defending 3NT in the Seniors play Rusinow ... all led the CJ... while neither pair in the Women's plays it ... both led the CQ!)

Home team	Visiting team	Room	By	=	IMP
		NS	EW	Home	Visiting
W3 Baker	Cooper	Open	3N	W ♣Q -1	100
		Closed	3N	W ♣Q -1	100

HOME CARDS SPLIT

W N E S

1♠ PASS

2NT PASS 3♣ PASS

3♦ PASS 3♠ PASS

4♣ PASS PASS PASS

2NT=GF spades
3C=min with stiff
3D =shortness ask
3S=short D

NORTH
WEST 2 DEALER Frequency
SOUTH Live scores

LoveBridge

♠ J9
♥ Q742
♦ JT93
♣ KJ6
N Lynn Baker

♠ AK75
♥ A
♦ Q8765
♣ 874
W Linda Lewis

♠ Q86432
♥ KJ8
♦ K
♣ Q53
E Disa Eytho

♠ T
♥ T9653
♦ A42
♣ AT92
S Olivia Schireson

DDS

Disa and Lewis were able to discern everything they needed to stop in the spade game on Board 2, Segment 5, on Friday.

The game is beatable with the underlead of the CA or with the lead of the DA, allowing South to see the dummy and switch to the killer small club. While the underlead of the CA is extremely unlikely, the lead of the DA is less so. It is possible for South to choose to cash the diamond, fearing that declarer's singleton could get discarded on a heart.

Olivia chose to lead a heart. Dummy won and Disa pulled trump. She

quickly shed a club on the HK and played the DK. Olivia won, cashed her CA and played a second club to Baker's king. Disa claimed her 10 tricks.

In the other room, Meyers/Sanborn had "mostly" the same information that Lewis/Disa had, however, when defining the 3NT shortness ask, the explanation given was "asking where the void is." Does that mean it was assumed not to be a singleton?

Meyers and Sanborn are aggressive competitors not known for bidding shyly. Meyer saw a chance for slam. She knew the opponents, down over 100 IMPs would likely be pushing for games and slams. She jumped to 6S.

Pollack found the club lead but not the club underlead! She took the CA, the DA, and led a club to Cheri's king. Contract down 2... 11 IMPs to Cooper

HOME CARDS SPLIT

W N E S

1♠ PASS

2NT PASS 3♣ PASS

3♦ PASS 3♠ PASS

3NT PASS 4♦ PASS

6♣ PASS PASS PASS

2NT=Jacoby LR+
3C=All min
3D=asking
3S=some splinter
3NT= shortness ask (explained as asking where the "void" is
4D=short D

NORTH
WEST 2 DEALER Frequency
SOUTH Live scores

LoveBridge

♠ J9
♥ Q742
♦ JT93
♣ KJ6
N Cheri Bjerkan

♠ AK75
♥ A
♦ Q8765
♣ 874
W Jill Meyers

♠ Q86432
♥ KJ8
♦ K
♣ Q53
E Kerri Sanborn

♠ T
♥ T9653
♦ A42
♣ AT92
S Rozanne Pollack

DDS

EAST 6♣

In the Senior Semi-Final, all 4 tables played in the spade game. There was a 1 IMP swing in Wolfson/Tulin when Cohler player cleverly to take 11 tricks after the opening heart lead. Gary won the heart in dummy, pulled 2 rounds of trump, pitched a club on the HK, played the DK to Garner's ace. Garner continued diamonds. Gary put up the queen and pitched a club from hand. He ruffed a diamond, ruffed a heart, ruffed a diamond setting up dummy's D8 for the pitch of another club. Making 5!

Home team	Visiting team	Room	By	=	★	IMP	
						NS	EW
Wolfson	Tulin	Open	4♠	E	♥3	+1	450
		Closed	4♠	E	♥T	=	420
Lall	Goodman	Open	4♠	E	♥3	=	420
		Closed	4♠	E	♥3	=	420

BOARD: 7
DEALER: SOUTH
VULNERABLE: ALL

♠ Q86532
♥ 63
♦ Q2
♣ AQ3

♠ A9
♥ 985
♦ J973
♣ JT42

♠ 7
♥ AT742
♦ A54
♣ K876

♠ KJT4
♥ KQJ
♦ KT86
♣ 95

Par: 140

	♣	♦	♥	♠	N
N	5	6	5	9	8
S	4	:	:	:	7
EW	8	7	8	4	4

Home team Visiting team Room By = IMP

Board 7 required careful defense from the start.

East/West is entitled to one spade, one heart, one diamond and one club... however, it is easy to let the club trick go amiss.

Home team	Visiting team	Room	By	=	NS	EW	Home	Visiting
Wolfson	Tulin	Open	4♠	N	♣7	=	620	12
		Closed	4♠	N	♠7	-1	100	
Lall	Goodman	Open	4♠	N	♠7	-1	100	12
		Closed	4♠	N	♥A	=	620	

In the Open Room of Wolfson/Tulin, Cohler faced this auction:

Tulin	Berkowitz	Cohler	Garner
			1♦
PASS	1♠	DBL	2♠
PASS	4♠	PASS	PASS
PASS			

Leading the unsupported HA did not look attractive to Cohler. He was never leading a diamond so it comes to a singleton trump ... often a bad choice... or a club. Partner needs as little as the CQ to make a club right. Unfortunately for Gary, on this hand the club lead was lethal. It went from the king into the AQ and Berkowitz had an easy ten tricks!

In the Closed Room of Wolfson/Tulin and the Open Room of Lall/Goodman, East chose the best lead of a spade. Declarer had to rely on the club finesse for ten tricks and it simply wasn't working.

In the Closed Room of Lall/Goodman, Lall led the HA and Goodman was poised for defeat. Lall needed to continue hearts or switch to his singleton spade. He fell from grace and underled his DA hoping for the jack in declarer's hand and the queen with his partner. The D4 went to Goodman's queen. He played a round of trump, West winning the ace. Milner, West, played a club through but it was too late. Goodman rose ace, played a spade to the king, cashed the HK, cashed the HQ and **discarded his little diamond!** Well played, Andy! 12 IMPs to Wolfson; 12 IMPs to Goodman

Home team	Visiting team	Room	By	=	NS	EW	Home	Visiting
Baker	Cooper	Open	2♠	N	♣7	+2	170	7
		Closed	4♠	N	♠7	-1	100	

In the Beth Palmer Women's USBC, in the Open Room, Baker and Schireson stopped short of game in 2S and took 10 tricks. Bjerkan/Pollack, in the Closed Room, bid to game. Sanborn led a trump lead and defeated the game.

7 IMPs to Baker

BOARD: 20
DEALER: WEST
VULNERABLE: ALL

♠ AK
♥ Q7432
♦ A9
♣ A74

♠ J9432
♥ J
♦ K8
♣ KQ832

♠ T876
♥ 9865
♦ T63
♣ 95

♠ Q5
♥ AKT
♦ Q7542
♣ JT6

Par: 2220

	♣	♦	♥	♠	N
NS	9	13	13	6	13
EW	4	0	0	6	0

Home team Visiting team Room By = IMP

Wolfson	Tulin	Open	6♥	N	♥8	+1	1460	13
		Closed	3N	N	♠6	+3	690	
Lall	Goodman	Open	6♥	N	♠8	=	1430	17
		Closed	6♥	N	♣5	-2	200	

Board 20 saw a 13 IMP swing for Wolfson and a 17 IMP swing for Lall.

Three of the four tables in the Seniors bid to the heart slam.

In Wolfson/Tulin, Bramley and Woolsey had an arduous auction where literally EVERY bid was an alert. When it ended, they stopped short of the cold slam in the NT game. There are 2 spade tricks, 5 heart tricks with the fall of the singleton jack, 5 diamond tricks with the king doubleton in the slot and 1 club trick for 13 winners. At the table, Bramley took 12 for +690.

HOME CARDS SPLIT

W	N	E	S
PASS	1♣	PASS	2♣
PASS	2♦	PASS	2♣
PASS	2NT	PASS	3♦
PASS	3♣	PASS	3NT

♠ AK
♥ Q7432
♦ A9
♣ A74
N Bart Bramley

♠ J9432
♥ J
♦ K8
♣ KQ832
W Michael Kamil

♠ T876
♥ 9865
♦ T63
♣ 95
E David B

♠ Q5
♥ AKT
♦ Q7542
♣ JT6
S Kit Woolsey

1C=Precision
2C=D GF
2D=art ask
2S=1 suiter w/2 or fewer S
2NT=ask
3D=2-3-5-3
3S=weaker control ask
3NT=4 controls or 4 controls <13 HCP

In the other room, Wolfson and Garner bid the slam with only two alerts:

13 tricks were easy and they scored +1460

13 IMPs to Wolfson

	Tulin	Wolfson	Cohler	Garner
	W	N	E	S
	PASS	1♥	PASS	2♣
	PASS	2NT	PASS	4♥
	PASS	4NT	PASS	5♥
	PASS	5NT	PASS	6♥
2C=3+ C GF 5H=2 w/o the trump Q				

In Lall/Goodman, Milner and Lall played 6H successfully in the Open Room.

In the Closed Room, Koneru and Pratap failed 2 tricks in the same contract. Rosenberg led a club and Pratap won the queen with the ace. He played a heart to dummy took a fatal play. He led the DQ! to the K, A, 6. Big oops! He could no longer bring in the diamond suit for no losers and his transportation was woefully tangled. He lost 2 clubs and a diamond for down 2. 17 IMPs to Lall

In the Beth Palmer Women's, neither table reached slam. There was a 1 IMP swing to Cooper when 3NT made 6 while 4H made 5.

Home team Visiting team Room By = IMP

Baker	Cooper	Open	4♥	N	♣9	+1	650	
		Closed	3N	N	♠7	+3	690	

♠ AK
♥ Q7432
♦ A9
♣ A74
N Pratap Rajadhyaksha

♠ J9432
♥ J
♦ K8
♣ KQ832
W Zia Mahmood

♠ T876
♥ 9865
♦ T63
♣ 95
E Michael

♠ Q5
♥ AKT
♦ Q7542
♣ JT6
S Venkatrao Koneru

Howie Doing... Limey Jack...

Wolfson crushed Tulin.
I've egg on my face.
It's Wolfson v Lall
For win or for place!

Both teams have locals,
Or did long ago.
They're used to it here
In rain and in snow.

Bobby and Eric
Are in total sync.
Zia and Michael
Have flair but still THINK!

Wolfson's got Kamil,
And Grand-daddy Berk.
And Becker and Garner
Who share in the work.

Playing 5-handed
With Kamil revolving.
That breeds confusion,
Hurts problem solving.

They sent Tulin home.
They're all playing nice.
They killed my first pick.
They can't do it TWICE!

I'm going with Jeff
In spite of the flaws.
I want a big lead,
So Lall just withdraws!

See you next year...
Howie Doing!

Breakfast in the Hospitality Suite!

When will that Muppet, Howie Dung, learn to throw rose petals to celebrate Limey Jack being perfect all the way through. Imagine, he picked Tulin, the daft turnip. Limey Jack made it very clear from the starting gate that it would be Lall and Wolfson in the final.

Had Wolfson ponied up for a sixth lad of note, this might have been a dead head. But as it is, my lovely Zia and his band of merry men will be standing on the throne two days hence. The punters are threatening a boycott so plunk down a quid on two on the morn.

The lassies are up next.

Ta.



Cross IMPs

Senior USBC Semi-Finals

1.	Michael Kamil - Mike Becker	Wolfson	0.69	61.33	89
2.	Michael Rosenberg - Zia Mahmood	Lall	0.47	42.00	90
3.	Bobby Levin - Eric Rodwell	Lall	0.29	26.50	90
4.	Jeff Wolfson - Steve Garner	Wolfson	0.20	12.17	60
5.	David Berkowitz - Steve Garner	Wolfson	0.18	10.67	60
6.	Andy Goodman - Mike Passell	Goodman	0.13	7.50	60
7.	Hemant Lall - Reese Milner	Lall	0.07	4.33	60
8.	Bart Bramley - Kit Woolsey	Tulin	-0.06	-5.50	90
9.	Alan Sontag - Ralph Katz	Tulin	-0.16	-14.00	89
10.	Billy Cohen - Ron Smith	Goodman	-0.43	-38.33	90
11.	Pratap Rajadhyaksha - Venkatrao Koneru	Goodman	-0.47	-42.00	90
12.	Gary Cohler - Stanley Tulin	Tulin	-0.51	-30.33	60
13.	David Berkowitz - Michael Kamil	Wolfson	-1.14	-34.33	30

Note that Mike Kamil is first and last... It's a partnership thing!

Beth Palmer Women's USBC

1.	Cecilia Dwyer Rimstedt - Sandra Rimstedt Baker	Baker	0.78	70.00	90
2.	Lynn Baker - Olivia Schireson	Baker	0.67	40.00	60
3.	Jill Meyers - Kerri Sanborn	Baker	0.36	32.00	90
4.	Disa Eythorsdottir - Linda Lewis	Cooper	-0.24	-22.00	90
5.	Kitty Cooper - Lynne Feldman	Cooper	-0.51	-38.00	75
6.	Cheri Bjerkan - Rozanne Pollack	Cooper	-1.09	-82.00	75

In Memorium: A Tribute to the Great Lew Stansby

Last night the bridge world lost a great friend, great player and great gentleman when **Lew Stansby** passed peacefully at his home in Dublin, California. He leaves wife, Joanna, and son, Richard Kyle, who he shares with ex-wife, Jan Martel. Lew was well-loved, well-liked and well-respected by the many bridge friends and acquaintances whose lives he touched from around the globe. He was an amazing card player with a huge history of first and second place finishes spanning decades. Before he became ill, he and Chip Martel were a force with which to be reckoned.

On July 27, 2023, many will recall the "nobituary" that Mitch Dunitz posted on Bridge-Wiiners. The accolades for both Lew and Joanna were legendary. As a tribute to Lew, some (way too many to include them all) of those sentiments are repeated here:

Michael Schuster... Some thoughts about Lew:

He is a tricky card player. When I was a junior, I played against him in a sectional. The auction implied I had a missing queen. Instead of finessing partner for it, he led up towards dummy's Jack and I played second hand low. I learned a lesson about him that day and his tricks didn't always work on me after that - but I don't know that people really understand how great his instincts are and how sneaky he can be.

Jeff Goldsmith and I were visiting the Stansbys playing Doop. It was some set from some 40 year old Men's Pairs. On board 3, Lew starts telling everyone what they have. Which I suppose goes with a story I heard where people were talking about a 30 year old board in a bar. Lew was sitting next to them. He listened in and asked, "What did you do on the companion board?"

Chip Martel: A great bid by Lew:

He had Jx AJxx - KQTxxxx

Lew opened 1C, LHO bid 4D and gently jumped to 7S. It went P-P-DBL-P-P. Lew was pretty sure club lead was going to get ruffed and that I had the diamond Ace (how likely we both have voids), so attractive to bid 7N. Of course could be quite bad, Lew tried an SOS XX (of sorts). If he had 2 aces would bid 7N figuring I had (as long as he had a spade), so presumably was showing 1 ace, inviting 7N if I had the rest.

I had AKQTxxxx Kx Axx - and probably should have XXed myself, but didn't want to discourage a club lead. 7Sxx was much more successful than 7N would have been.

Joanna Stansby:

... Lew was always a quiet soft spoken kind of guy (exactly my type :) Now he has less to say because articulating sentences is a challenge but he still enjoys hearing people tell stories about "the old days".

We are not traveling at all but we love visitors. If you are anywhere near Dublin CA...

Steve Weinstein:

Lew- I miss our dinners in the Bay area, breakfasts in Monterey, our conversations. Thank you for being such a great teammate, thank you for being such a great role model. I miss you!

Zia:

I was a teammate and friend of Lew for many years . Only one word describes him .." gentleman" with the emphasis on gentle . We were members of the sportsman committee for several years ..when he resigned it was on one condition .." u can't put me up for the award" . Typical .. But he deserves it more than any other .. understated genius as a player ..his record overflows with achievement..

Jan Martel:

Although I thought I had learned how to play bridge as a child and had played in college, sitting on the floor knitting and playing "bridge," Lew was really my first teacher. He taught me so much. Over 50 years ago he gave me my first lesson on ethics. We were defending a trump contract at a San Francisco Regional. Lew led the King of a side suit. Dummy had Qxxxx and I had Jx. I was very much still a beginner and often had to work things out - this time, I thought I needed to decide whether to give accurate count with the J (50 years ago we hadn't even heard of upside down signals) or play my little one in case the J might be useful later. I don't remember which I did, but I do still remember Lew promptly playing the A for declarer to ruff and explaining to me afterward that when I played out of tempo like that he had to play me for a singleton.



From Wikipedia... updated around 2013...

Lew Stansby (born 1940) is an American bridge player from Dublin, California. Lew, a former commodities trader lives with wife and fellow national champion JoAnna Stansby. Since his first national win in the Reisinger in 1965, he has won over 35 national championships and seven world championships, accumulating a win in every decade since 1965.

Stansby was inducted into the ACBL Hall of Fame in 2001.

Bridge accomplishments

Honors

ACBL Hall of Fame, 2001

Awards

Fishbein Trophy 2000

Herman Trophy 2007

Mott-Smith Trophy 1984, 1986

Wins

Bermuda Bowl 1985, 1987, 2001

d'Orsi Senior Bowl 2005, 2007

Rosenblum Cup 1994

World Open Pairs Championship 1982

North American Bridge Championships

Silodor Open Pairs 1986

Nail Life Master Open Pairs 1998

North American Pairs 2002

Freeman Mixed Board-a-Match 2010

Grand National Teams 1982, 1983, 1985, 1987, 1993, 1996, 2003

Roth Open Swiss Teams 2010, 2013

Vanderbilt 1967, 1984, 1987, 1994, 1996, 1998, 2011

Senior Knockout Teams 2013

Mitchell Board-a-Match Teams 1995, 2001, 2005, 2007

Chicago Mixed Board-a-Match 2001, 2008

Reisinger 1965, 1981, 1985, 1986, 1996

Spingold 1975, 1990, 2000



Runners-up

Bermuda Bowl 1989

Rosenblum Cup 1982

North American Bridge Championships

Wernher Open Pairs 1991

Blue Ribbon Pairs 1981

Nail Life Master Open Pairs 1999¹

North American Pairs 1997

Grand National Teams 2000, 2001, 2006

Jacoby Open Swiss Teams (1) 2000

Vanderbilt 1992, 2006, 2010

Senior Knockout Teams 2012

Mitchell Board-a-Match Teams 1989, 1994, 2008

Chicago Mixed Board-a-Match 2004

Reisinger 1983, 2006, 2007, 2012

