

Volume 18, Issue 25  
May 24, 2024

## “Trials” and Tribulations

UNITED STATES BRIDGE CHAMPIONSHIPS

# Results:

Senior USBC - 2024											
SemiFinal (120 boards)			Set score of form "Ax" or "Rx" indicates pending Appeal or Ruling. IMPs Total may change.								
23-May-2024			<i>The colored score boxes indicate the team with seating rights for that segment of play.</i>								
#	TEAM	IMPs Total	SET #1	SET #2	SET #3	SET #4	SET #5	SET #6	SET #7	SET #8	Penalty (IMPs)
1	<a href="#">Wolfson - wins tie</a>	119	42	39	14	24					
4	<a href="#">Tulin</a>	94	2	16	28	48					
2	<a href="#">Lall - wins tie</a>	101	17	41	15	28					
3	<a href="#">Goodman</a>	75	22	15	19	19					

Women's USBC - 2024															
Final (180 boards)			Set score of form "Ax" or "Rx" indicates pending Appeal or Ruling. IMPs Total may change.												
23-May-2024			<i>The colored score boxes indicate the team with seating rights for that segment of play.</i>												
#	TEAM	IMPs Total	SET #1	SET #2	SET #3	SET #4	SET #5	SET #6	SET #7	SET #8	SET #9	SET #10	SET #11	SET #12	Penalty (IMPs)
1	<a href="#">Baker</a>	155	25	58	28	44									
2	<a href="#">Cooper</a>	49	32	2	3	12									

**USBF President**  
Aaron Silverstein  
**USBF Vice President**  
Steve Garner  
**USBF COO & Secretary**  
Jan Martel  
**USBF CFO & Treasurer**  
Max Schireson  
**USBF Recorder**  
Jack Oest  
**Chief Communications Officer**  
Suzi Subeck

**Directors**  
McKenzie Myers, DIC  
Ken Horwedel  
Chris Wiegand

**Tournament Organizer**  
Jan Martel  
**Software Expert**  
Al Hollander  
**VuGraph Organizers**  
Rob Barrington

**Appeals Administrator**  
Suzi Subeck, Chairman

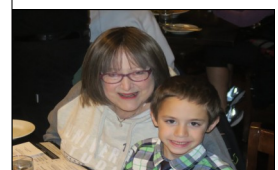
**Appeals Panel:**  
Wafik Abdou  
Dana Berkowitz  
Cheri Bjerkan  
Gary Cohler  
Rich DeMartino  
Ish DelMonte  
Mitch Dunitz  
Marty Fleisher  
Ron Gerard

Marty Hirschman  
George Jacobs  
Ralph Katz  
Bobby Levin  
Chip Martel  
Eric Rodwell  
Danny Sprung  
Josh Stark  
Adam Wildavsky

**Bulletin Editor**  
Suzi Subeck

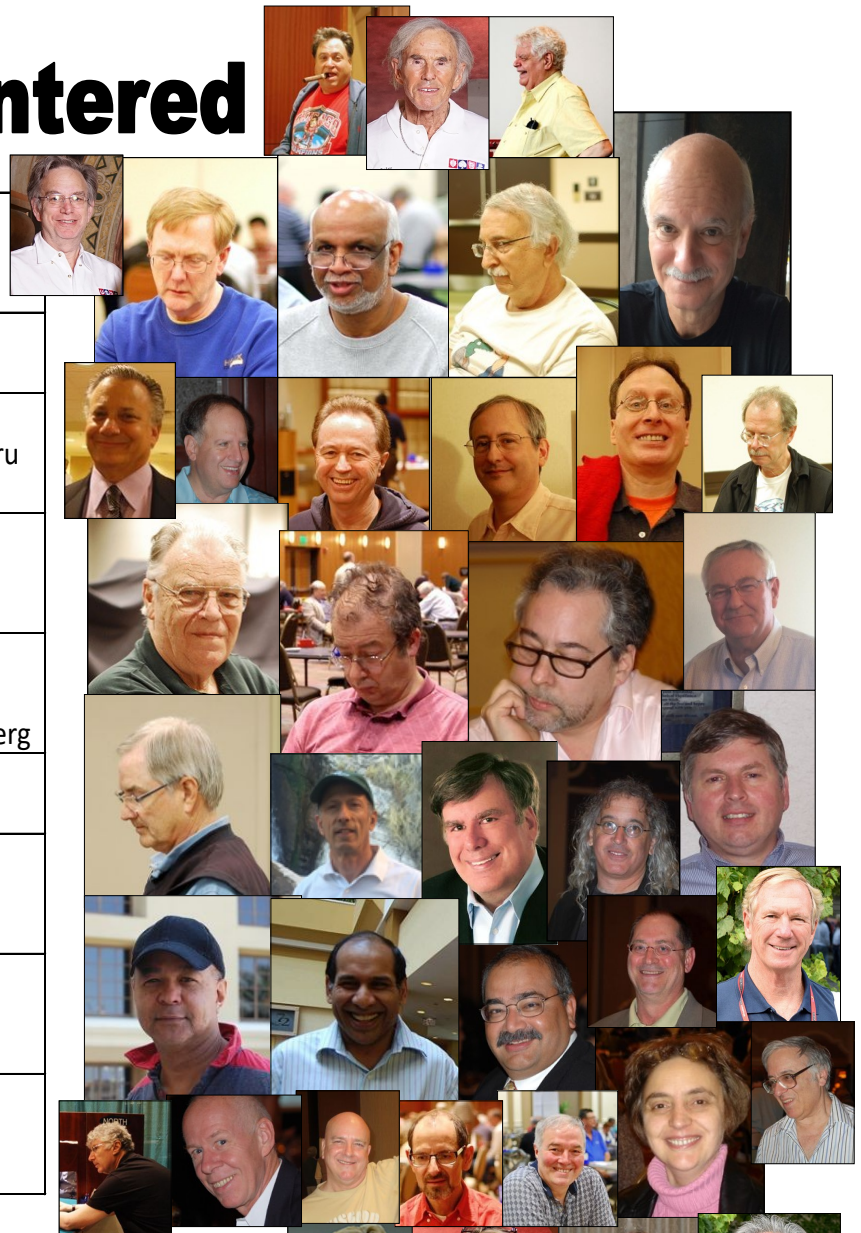
**Hospitality**  
Julie Arbit  
Marie-France Benoit

Ed. Note: With delayed broadcasting, it is challenging to watch every hand for write ups. If anyone has a particularly interesting hand, please send me the board # & match # with any important details. I will do my best to review and include it. Email to [stansubeck@prodigy.net](mailto:stansubeck@prodigy.net). Thank you!



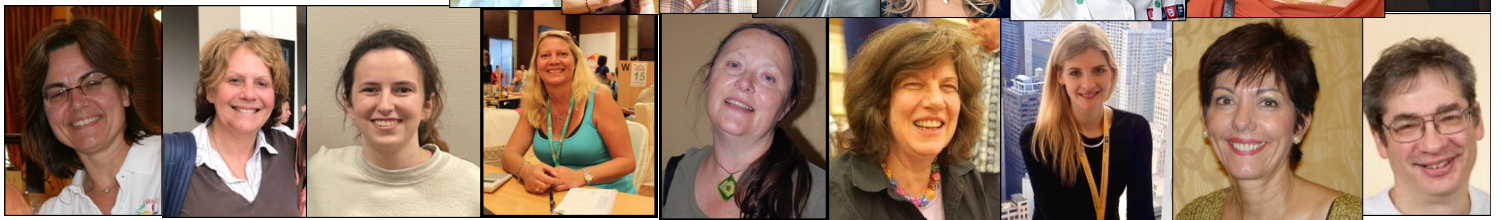
# Senior Teams Entered

<b>Aker</b>	Jeff Aker, Capt John Lusky Barry Rigal	Allan Falk Glenn Milgrim Ron Rubin
<b>Cappelli</b>	Bob Cappelli, Capt Bob Bitterman	Mark Aquino Mark Bendure
<b>Goodman</b>	Andy Goodman, Capt Pratap Rajadhyaksha Ron Smith	Mike Passell Venkatrao Koneru Billy Cohen
<b>Hamman</b>	Bob Hamman, Capt Doug Doub John Schermer	Neil Chambers Adam Wildavsky Neil Silverman
<b>Lall</b>	Hemant Lall, Capt Eric Rodwell Zia Mahmood	Reese Milner Bobby Levin Michael Rosenberg
<b>Reynolds</b>	Tom Reynolds, Capt Bernie Greenspan	Lance Kerr Fred Schenker
<b>Simson</b>	Doug Simson, Capt Jim Krekorian Steve Beatty	Curtis Cheek Peter Weichsel Fred Stewart
<b>Tulin</b>	Gary Cohler, Capt Alan Sontag Kit Woolsey	Stan Tulin Ralph Katz Bart Bramley
<b>Wolfson</b>	Jeff Wolfson, Capt David Berkowitz Mike Becker	Steve Garner Michael Kamil



# Women's Teams Entered

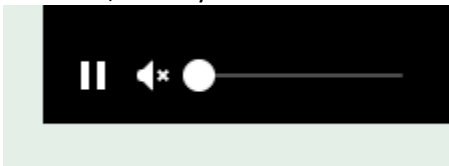
<b>Baker</b>	Lynn Baker Kerri Sanborn Cecilia Dwyer Rimstedt <b>Sam Dinkin, NPC</b>	Olivia Schireson Jill Meyers Sandra Rimstedt
<b>Cooper</b>	Kitty Cooper, Capt Linda Lewis Rozanne Pollack	Lynne Feldman Disa Eythorsdottir Cheri Bjerkan





## 2024 USBCs Kibitzing - There will be delayed kibitzing for all of the 2024 USBCs on LoveBridge

You can follow the USBC on the <https://vugraph.lovebridge.com/> website. If you get to the voice commentary and there is no sound, you need to "unmute." When you first get to the page, there is a small icon of a speaker in the middle of your screen with an x on it. Click there to unmute. If you miss that icon, move your cursor to the bottom left of the screen and you should see a something like this:



Click on the speaker to unmute.

Vugraph is delayed for 30 minutes or until all tables have completed play on a board, whichever is later.

### Kibitzing Schedule (EDT)

**For all KO days** of the 2024 USBCs, kibitzing times will be :

Segment 1: 11:30 am EDT; Segment 2: 1:45 pm EDT

BREAK

Segment 3: 5:00 pm EDT; Segment 4: 7:15 pm EDT

**For Round Robin days**, each kibitzing segment will start 30 minutes after play starts. No voice for RR's.

To listen to commentary, search for the TV icon! It will send you to the page where you can choose from the available live commentators. If it doesn't do anything, no one is commenting.

**Deep Involvement:** Choose the "Match view" at the starting page of your event. Your screen will be divided into 4 small screens – 2 of them showing the 2 tables of the match you choose, the other 2 having the scoresheet for your match and the current scores of the other matches. In the 2x2 view you can personalize the content in all your windows. (The 2x2 view is not available on mobiles.)

### Think together!

When watching a table, click on a name and choose "Kibitz". Instead of seeing all 4 hands, you will see what the player sees, and you can decide what you would do.

### More Information:

Be well informed and tell your friends: while following the play, you can click many items. The image of the sticker with the number of the board (upper right) takes you to the results of the board, in the bottom right corner, the arrow takes you to the scoresheet, the DDS shows the double dummy analyses, beside that there is a button for the other table of the same match, at the top left corner you can see the bidding with alerts and the explanations (mouse over), the tricks already played, and the double dummy analysis for the available number of tricks with the par score.

### Navigation icons:

While surfing here and there in the vugraph, or amongst the archive sessions, there are icons to help you. You can always go back to the main page with the "house" or to the standings with the "scores". If you cannot see the icons, move your mouse, or touch your screen and they pop up immediately. There is a built-in back button because the back button of your browser will always take you to the starting page. If this is not what you wanted, push next in your browser and you can continue where you were.

### Replay:

After the event you can find every board from every table easily. While replaying the hands, the only surprise can be the way "next board" button works. If you have arrived from a scoresheet, it navigates through the scoresheet. If you have arrived from a screen where the results were shown for a given board, the same buttons move you through the list.



I hope my team wins.

I've been watching  
for days.

They bid really well

And make super  
great plays!



# Kibitzing...

Why is England the wettest country? Because the queen reigned there for decades.

What sits at the bottom of the sea and twitches? A nervous wreck.

What do you call a woman who sets fire to all her bills? Bernadette.

I was kidnapped by mimes once. They did unspeakable things to me.

What did the full glass say to the empty glass? "You look drunk."

You're not completely useless. You can always serve as a bad example.

Two guys walk into a bar. The third guy ducks.

And God said to John, "Come forth and you shall be granted eternal life." But John came fifth and won a toaster.

"I stand corrected!" said the man in the orthopedic shoes.

I used to be addicted to soap. But I'm clean now.

Do you want to hear a construction joke? Sorry, I'm still working on it.

What do Alexander the Great and Winnie the Pooh have in common? Same middle name.

What's the opposite of irony? Wrinkly.

I finally decided to sell my vacuum cleaner. All it was doing was gathering dust!

I'm thinking of a career where I estimate crowd sizes at different outdoor events. I wonder how many people are in that field.

Why don't male ants sink? Because they're boy-ant.

A bear walks into a restaurant. He tells his waiter, "I want a grilled... cheese." The waiter says, "What's with the pause?" "Whaddya mean?" the bear replies. "I'm a *bear*!"

What's E.T. short for? Because he's got little legs.

Why do oranges wear sunscreen? So they don't peel.

What do you call a Frenchman wearing sandals? Phillippe Phillope.

Two men meet on opposite sides of a river. One shouts to the other, "I need you to help me get to the other side!" The other guy replies, "You're *on* the other side!"

What did the mayonnaise say when the refrigerator door was opened? "Close the door, I'm dressing!"

What did the bald man exclaim when he received a comb for a present? Thanks—I'll never part with it.

Why were they called the Dark Ages? Because there were a lot of knights.

A guy goes to a pet store to buy a goldfish. The salesman asks him, "Do you want an aquarium?" The guy responds, "I don't care what star sign it is!"

What do you call bears with no ears? B—.

Why were the teacher's eyes crossed? She couldn't control her pupils.

What's a foot long and slippery? A slipper.

Exaggerations have become an epidemic. They went up by a *million percent* last year.

Two windmills are standing in a wind farm. One asks, "What's your favorite kind of music?" The other says, "I'm a big metal fan."

What do you call a bee that can't make up its mind? A maybe.

Did you hear about the new restaurant called Karma? There's no menu—you get what you deserve.

What is the opposite of a croissant? A happy uncle.

Which branch of the military accepts toddlers? The infantry.

Did you know you can actually listen to the blood in your veins? You just have to listen varicosely.

What do you call a group of rabbits backing up? A receding hare line.

Where do young trees go to learn? Elementree school.

I told my physical therapist that I broke my arm in two places. He told me to stop going to those places.

What washes up on very small beaches? Micro-waves.

What do you call it when a snowman throws a tantrum? A meltdown.

Where do you find a cow with no legs? Right where you left it.



**Senior Schedule**

SENIOR SCHEDULE			
Round Robin or KO - Schedule will depend on number of teams			
Day	Date	Time	Boards
Sunday	May 19		
Monday	May 20		
Quarterfinal			
Tuesday	May 21	10:00 - 12:00 12:15 - 2:15  3:30 - 5:30 5:45 - 7:45	Segment 1 Boards 1-15 Segment 2 Boards 16-30 75 minute Break Segment 3 Boards 31-45 Segment 4 Boards 46-60
Wednesday	May 22	10:00 - 12:00 12:15 - 2:15  3:30 - 5:30 5:45 - 7:45	Segment 5 Boards 1-15 Segment 6 Boards 16-30 75 minute Break Segment 7 Boards 31-45 Segment 8 Boards 46-60
Semifinal			
Thursday	May 23	10:00 - 12:00 12:15 - 2:15  3:30 - 5:30 5:45 - 7:45	Segment 1 Boards 1-15 Segment 2 Boards 16-30 75 minute Break Segment 3 Boards 31-45 Segment 4 Boards 46-60
Friday	May 24	10:00 - 12:00 12:15 - 2:15  3:30 - 5:30 5:45 - 7:45	Segment 5 Boards 1-15 Segment 6 Boards 16-30 75 minute Break Segment 7 Boards 31-45 Segment 8 Boards 46-60
Final			
Saturday	May 25	10:00 - 12:00 12:15 - 2:15  3:30 - 5:30 5:45 - 7:45	Segment 1 Boards 1-15 Segment 2 Boards 16-30 75 minute Break Segment 3 Boards 31-45 Segment 4 Boards 46-60
Sunday	May 26	10:00 - 12:00 12:15 - 2:15  3:30 - 5:30 5:45 - 7:45	Segment 5 Boards 1-15 Segment 6 Boards 16-30 75 minute Break Segment 7 Boards 31-45 Segment 8 Boards 46-60

**No Electronic Devices are Permitted in the Playing Area.**

**This applies to players AND kibitzers.**

**Severe penalties will be assessed for violation of this rule.**

**Please turn off all cell phones and check them at the door.**

**The USBF reserves the right to wad anyone entering the playing field.**



Lovebridge practice sessions			
Day	Date	Time (CDT)	
Tuesday	April 30	5:00 PM - 7:00 PM	
Thursday	May 9	5:00 PM - 7:00 PM	
Saturday	May 18	5:00 PM - 7:00 PM	
Wednesday	May 22	5:00 PM - 7:00 PM	

**Location: TBD**

PRE-TOURNAMENT CAPTAINS & PLAYERS MEETINGS			
On Zoom			
Event	Day	Date	Time (CDT)
Open	Tuesday	April 30	9:00 PM
Mixed	Thursday	May 9	9:00 PM
Senior	Saturday	May 18	9:00 PM
Women's	Monday or Wednesday	May 20 or 22	9:00 PM

US\$19.95 | GBP 15.95  
978-1-77140-264-4

Available to order today from your favourite bookstore.

Beth Palmer WOMEN'S SCHEDULE			
Final - 3 days, 180 boards			
Day	Date	Time	Boards
Thursday	May 23	10:00 - 12:00 12:15 - 2:15  3:30 - 5:30 5:45 - 7:45	Segment 1 Boards 1-15 Segment 2 Boards 16-30 75 minute Break Segment 3 Boards 31-45 Segment 4 Boards 46-60
Friday	May 24	10:00 - 12:00 12:15 - 2:15  3:30 - 5:30 5:45 - 7:45	Segment 5 Boards 1-15 Segment 6 Boards 16-30 75 minute Break Segment 7 Boards 31-45 Segment 8 Boards 46-60
Saturday	May 25	10:00 - 12:00 12:15 - 2:15  3:30 - 5:30 5:45 - 7:45	Segment 9 Boards 1-15 Segment 10 Boards 16-30 75 minute Break Segment 11 Boards 31-45 Segment 12 Boards 46-60

**Beth Palmer Women's Schedule**

**The Art of Becoming A Top Bridge Player**

Samantha Punch with Tim Rees

Foreword by Jeff Meckstroth

## 2024 USBCs Hospitality

We are returning to our pre-pandemic hospitality, with the hospitality suite (room 2321) open most of the day for socializing, Vugraph, and snacks. We will be providing breakfast and lunch each **day of play**. Marie-France Benoit will be our lead hostess, with help from Jacob Morgan and Julie Arbit, who makes the best guacamole. If you're at the tournament and can volunteer to help with hospitality (pick up items at Costco or nearby stores or restaurants, preparing food) please let Jan or Marie-France know.

**Breakfast:** From <sup>8:30-10:30</sup> There will be the usual breakfast food: cereal, bagels, toast, salmon, fruit, juice, coffee and tea. For those who prefer Keurig coffee, that will be available. So long as the suite doesn't become too crowded, you are welcome to eat there. No masking requirement.

**Lunch:** On the first four days of each event we will be serving a buffet lunch in a hotel banquet room, usually the Slate and Cyan rooms at the front of the hotel; we will have signs in the Player Break Room and Hospitality Suite with daily location. The hotel will be supplying what they do best: salads and chips. We will be bringing in 2 or 3 hot dishes from a local restaurant each day. There should be enough room for you to eat in the hotel banquet room, but you are welcome to take food from there to an outside table or to your hotel room. Lunch will be served from about half an hour before the morning session is supposed to end until about half an hour after the afternoon session starts. After the first 4 days of each event, lunch will be available in the hospitality suite at the break. There will be a main dish (sandwiches, chicken, main dish salads, pizza) as well as tuna salad, green salad, cheese, fruit, berries, cookies or other desserts. Water and soft drinks will be available in refrigerators. As with breakfast, you are welcome to eat in the hospitality suite unless it is too crowded.

**Let us know** if you have specific needs. Our hosts will do their very best to accommodate you.

### Playing Rooms & Player's Break Room

**We welcome Marge Morgan, mother of Jacob, to the venue. Marge will help Marie-France.**

We will have bottled water in the Player's Break Room (1321), as well as soft drinks, Nespresso, some packaged snacks, and some fruit. Please keep your voices down in the Break Room where we are working.

Masks will be required in playing rooms **only if your screenmate asks you to wear one**. You do not have to put on a mask when you summon a director or ask for coffee, water or an escort outside to smoke.



Marie-France



Marge Morgan

Where are average things manufactured? The Satisfactory.

A limbo champ walks into a bar. He loses.

Why did the math textbook visit the guidance counselor? It needed help figuring out its problems.

What do you call a rooster staring at a pile of lettuce? A chicken sees a salad.

Why are teddy bears never hungry? Because they're always stuffed.

What did the Buddhist say to the hot dog vendor? "Make me one with everything."

What do you get from a pampered cow? Spoiled milk.

Did you hear about the cheese factory that exploded in France? There was nothing left but de-Brie.

Why couldn't the bicycle stand on its own? It was two tired.

Why don't math majors throw house parties? Because it's not good to drink and derive.

Why is it sad that parallel lines have so much in common? Because they'll never meet.

What did the mama tomato say to the baby tomato? "Catch up!"

Someone stole my mood ring yesterday. I don't know how I feel about that.

How do celebrities stay cool? They have many fans.

Why was the nurse asking for a red pen? She wanted it in case she had to draw blood.

What's the best-smelling insect? A deodor-ant.

What does a house wear? Address.





				2	4	5	
3			1				
5				7			1
7		8		3			
	9			4		7	
	6	2					
						2	
2				5		3	1
		9		6			

Sudoku 1

What do you call an apology written in dots and dashes?  
Re-Morse code.

What did one hat say to the other? "You wait here, I'll go on ahead."

Why did the pony have to gargle? Because it was a little horse.

Why is Peter Pan always flying? Because he neverlands.

What does it take to make an octopus laugh? Ten-tickles.

Why do chickens have a lot of parties? They enjoy hen-tertaining.

Why did the pigs move? They were living in a high-grime neighborhood.

I just had the dentist pull out all my teeth. I'm never doing that again.

Why don't seashells take baths? Because they wash up on the beach.

Why shouldn't you trust jungle animals? They're always lion.

What do fish use to buy groceries? Sand dollars.

Did you hear about the robbery at the glue factory? It was a stickup.

Why did the suspenders go to jail? They held up a pair of pants.

# Hard Sudoku

## Sudoku Solutions on Page 12

Sudoku 2

	5					1	4	9
7	8							
	2			9				
4			8		6			
		7			5			1
		5	1			7		3
8								
			6	8			2	

Please be "scent" sitive! Many players have allergies and have trouble breathing when perfumed aromas are present! Thank you!!



# Puzzle Page ...

## Treasure Island

Find and circle all of the words and names from the book Treasure Island.  
The remaining 46 letters spell a secret message.

M U S K E T T E L L O M S N I A T P A C T  
 T H E B L A C K S P O T R N E M A E S S L  
 E A S C U R C O S S N O N N A C L E Q I T  
 C I S S A H R E V I A T S A O C O U A O L  
 A I A C E N T E L E A L N D A W I S R A R  
 B S S S H A N F V B D W G S R R N R B I E  
 I R T S R O N O E L M M H Y E T A E U K T  
 N A T I E I O N N E I O U T P P P R C O S  
 B E P N A A G N N B R S R T A S S U C O A  
 O L S T L U F O E E A E N P I B I S A B M  
 Y H P N N O T A D R L L P H S N H A N G R  
 Y A R N I E T R R A B L L E O O Y E E O E  
 C N B C L K L S W I E E N S R J T R E L T  
 I D S E U I W N I B N O S H I P G T R L R  
 O S K S V T E A A P B G M A R O O N E D A  
 W S L E A Y L R H Y O S U R L A W U O I U  
 S E S A E P R A L M W G U I N E A S S L Q  
 T E R P N E M L S E I R E G O R Y L L O J  
 Y V A C L D I O E S N J G O D K C A L B N  
 H C A E B B S O C N N B U R I E D G O L D

ADMIRAL BENBOW INN  
 APPLE BARREL  
 ASHORE  
 BEACH  
 BEN GUNN  
 BILLY BONES  
 BLACK DOG  
 BUCCANEER  
 BURIED GOLD  
 CABIN BOY  
 CANNON BALLS  
 CANNONS

CAPE  
 CAPTAIN FLINT  
 CAPTAIN SMOLLETT  
 CHEST  
 COAST  
 COMPASS  
 COVE  
 CREW  
 CUTLASS  
 DR. LIVESEY  
 GUINEAS  
 HISPANIOLA

ISLAND  
 ISRAEL HANDS  
 JIM HAWKINS  
 JOLLY ROGER  
 LOGBOOK  
 LONG JOHN SILVER  
 MAROONED  
 MUSKET  
 MUTINY  
 PARROT  
 PIRATES  
 PISTOL

QUARTERMASTER  
 SAIL  
 SCHOONER  
 SEAFARING  
 SEAMEN  
 SHIP  
 SKELETON  
 SPY-GLASS  
 SQUIRE TRELAWNEY  
 THE BLACK SPOT  
 TREASURE  
 WALRUS



You play bridge  
 So you have a  
 pard.  
 I'm in the deck,  
 A valuable card!

Abigail, Oliver, Rosa, and Blake all attend the same summer camp, where they can cook, kayak, rock climb, and zip-line. Each child has a different favorite activity.

- Abigail's favorite activity isn't rock climbing.
- Oliver is afraid of heights.
- Rosa can't do her favorite activity without a harness.
- Blake likes to keep his feet on the ground at all times.

Can you figure out who likes what?

**Answer:**

Answer: Abigail likes to zip-line, -Oliver likes to kayak, Rosa likes to rock climb, and Blake likes to cook.





# Meet the Players



**Alan M. Sontag** (born May 2, 1946) is a professional bridge player. He's won six world championships, including two Bermuda Bowl wins. Sontag is also known for his book *The Bridge Bum*.

## Bridge career

Besides the two Bermuda Bowls, his other victories are the Rosenblum Cup, Transnational Open Teams, Senior Bowl, numerous North American Bridge Championships, and two wins in the London Sunday Times and Cavendish Invitational Pairs. In 1973, he and Steve Altman became the first American players to win the Sunday Times Pairs, at the time the premier invitational tournament in the world. Two years later, Sontag returned to London and won the tournament again, this time with Peter Weichsel. He and Peter were a formidable partnership from the 1970s until 2005. The two were partners in the 1983 Bermuda Bowl tournament in Stockholm, when the United States defeated Italy in one of its most exciting final matches. Sontag returned to the final in 2001, in Paris, where team captain Rose Meltzer became the first woman to win the Bermuda Bowl. Meltzer teams including Sontag won the odd-years Senior Bowl in 2005 and 2007 and the open Rosenblum Cup in 2006. Sontag was inducted into the ACBL Hall of Fame in 2007. Sontag was born in New York City. He and his wife, Robin, live in Gaithersburg, Maryland, with their son Robert. He is widely regarded as one of the fastest players in the world.

## Bridge: Weichsel and Sontag Take Laurels in London Tourney

By ALAN TRUSCOTT

Two New Yorkers, Peter Weichsel and Alan Sontag, have won the London Sunday Times invitational tournament, which is considered the strongest of all annual pairs events. The two-day tournament, which ended in London Saturday, boasted a field of 18 world-class pairs, including Gianfranco Facchini and Sergio Zucchelli of Italy, the 1974 winners, who were en route to Bermuda where they will help their country defend her world-team title next week.

Weichsel and Sontag had a comfortable lead for the last nine rounds and ended with a score of 204, for a 14-point margin over the runners-up, Steen Mueller and Stig Werdelin of Denmark. The Americans defeated the Danes, 12 to 8, in the final round.

Desmond Deery and Elon MacNeill of Ireland were third, with 187 points, followed by Willie Coyle and Victor Silverstone of Scotland, with 185.

### Double for Sontag

Sontag became the first player in the 12-year history of the tournament to score two victories. He won in 1973 with Steve Altman as his partner, narrowly defeating Weichsel and Tom Smith.

The new tournament victors are card players of the highest order, as Weichsel demonstrated with his defense on the diagramed deal from a recent team game played at the Mayfair Club in Manhattan.

The North-South bidding

was somewhat eccentric. Most players would regard the South hand as too strong for a one no-trump response to one diamond, and his subsequent insistence on no-trump when he held a diamond fit was questionable. North's re-bid of two clubs was not unreasonable, since South had implied possession of that suit, but he should perhaps have bid three hearts over two no-trump, as a final effort to wean South away from the nine-trick game.

In most circumstances the fate of the contract would depend entirely on South's ability to run one of the minor suits. A spade lead leaves him with eight top tricks, and either minor may help him to a ninth. As it happened the minor suits did not behave, but the spade suit was divided most favorably for the declarer: The spade king can be held up for a round, and West has no entry.

But when West led the spade five and the nine was played from dummy, Weichsel played the ten from the East hand without apparent thought. He had worked out instantaneously that South could not score more than seven quick tricks in the other three suits, so it was safe to give him one spade trick. And if he held the spade king it was vital to remove it quickly. The play of the ace by East would allow a winning hold-up by South on the next round.

South could still have made

**Today's Hand**

**NORTH (D)**  
 ♠ 9  
 ♥ A863  
 ♦ AKJ42  
 ♣ A52

**WEST**  
 ♠ QJ7532  
 ♥ 9742  
 ♦ 8  
 ♣ 86

**EAST**  
 ♠ A 108  
 ♥ QJ10  
 ♦ Q95  
 ♣ J1097

**SOUTH**  
 ♠ K64  
 ♥ K5  
 ♦ 10763  
 ♣ KQ43

Both sides were vulnerable.

The bidding:  
 North East South West  
 1♦ - Pass 1 N.T. Pass  
 2♣ - Pass 2 N.T. Pass  
 3 N.T. Pass Pass Pass  
 West led the spade five.

the game by refusing to take the king, but that was not a practicable play. From his point of view, the spade ace was on his left, and a duck would be foolish. He took the king and tried the other suits, but was disappointed. With the defenders in a position to run spade tricks as soon as they gained the lead, there was no way to make more than eight tricks.

South's discomfiture was completed in the post-mortem, when it was pointed out to him that his greedy bidding had precluded five diamonds, a contract that would have presented no difficulties whatever.

The winners of the major events at the Tri-state Regionals over the weekend at Grossinger's were as follows:  
 Men's Pairs—Hal Fein, Eastchester, N. Y., and Jerry Shakofsky, Brooklyn.

Women's Pairs—Natalie Flatow and Edda Spangelet, New York.

Mixed Pairs — Judi Solodar, New York, and Arthur Waldmann, New Preston, Conn.

Open Pairs—Leonard Kaplan, Bayonne, N. J., and Les Bart, Bethesda, Md.

From the NYT January 20, 1975

# Logic Puzzle Page

		First Names					Film Genres					Disasters				
		Alicia	Donald	Kenneth	Skye	Tate	action	animation	horror	mystery	silent	earthquakes	tornados	tsunamis	volcanos	wildfires
Wedding Years	1947															
	1959															
	1971															
	1973															
	1983															
Disasters	earthquakes															
	tornados															
	tsunamis															
	volcanos															
	wildfires															
Film Genres	action															
	animation															
	horror															
	mystery															
	silent															

**Answer  
on page 12**

Wedding Years	First Names	Film Genres	Disasters
1947			
1959			
1971			
1973			
1983			

1. The scientist who studies earthquakes doesn't enjoy silent films.
2. Either the person married in 1971 or the person married in 1973 specializes in tornados.
3. The silent film buff got married after Kenneth.
4. Of the mystery film buff and Tate, one specializes in tornados and the other got married in 1973.
5. The scientist who studies tsunamis doesn't enjoy action films.
6. The scientist who studies tornados is not Donald.
7. The 5 people were the scientist who studies tsunamis, the animation film buff, the person married in 1971, Alicia, and the scientist who studies volcanos.
8. The scientist who studies wildfires is Tate.
9. The scientist who studies wildfires got married after Skye.
10. The person married in 1959 loves watching silent films.
11. The scientist who studies tornados got married after the action film buff.

# Playing Procedures Reviewed For Those Arriving for the Womens

You will be playing on Chromebooks using LoveBridge software. The Chromebooks all have wired mice, which you may choose to use or not. They also have touch screens if you prefer that, and of course integrated keyboards. You will not be able to go to any websites other than the LoveBridge playing site from the playing room Chromebooks.

There will be 2 players in each room, one from each team in the match - North & East together and South & West together. All of the NE rooms are on the first floor; all of the SW rooms are on the second floor.

Because some of you have said that you prefer the opponents' system information on paper in addition to being available on the Chromebooks, we are asking each player to bring a copy of their SSF, convention card, and if relevant the ACBL Multi defense to the table for their opponent. If you need help printing anything, come to room 1321 before you play and one of us will print for you.

After you have finished a segment and scored with your teammates, please check the score on LoveBridge and if you disagree with it, come to room 1321 and so we can sort it out.

## Captains:

Your lineup sheet been shared with you. If you can't open it, or don't understand something about it, please let us know.

For the first segment of play each day, the Away team (the team that does not have seating rights for the segment) should tell the Home team their lineup (by email, text, or an entry on the lineup sheet) no later than 8:50 am (70 minutes before play starts), and enter the lineup on their lineup sheet no later than 9:00 am. If you enter your lineup on the lineup sheet before 8:50 am, that will satisfy both requirements. The Home team should give the Away team its lineup by 8:55 am, and should also enter it on the lineup sheet no later than 9:00 am. Of course, if the Away team doesn't communicate its lineup on time, the Home team has more time.

We ask you to enter the lineup on your lineup sheet because that may be the easiest way to give your lineup to your opponent. If you leave your lineup page open on your computer or other device, it will automatically update with the opponent's lineup when they enter it. Also, especially for the first segment of the day, there are often players who come to the office asking where they're supposed to sit and if the lineup is on the lineup sheet, we can direct them.

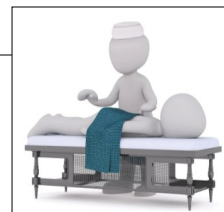
For subsequent segments, you need only notify each other of your lineups (10 minutes before the start of the segment for the Away team, 5 minutes for the Home team), although you are welcome to enter the lineup on the lineup sheet in case one of your players doesn't know where they are supposed to sit and comes to ask us.

## Line-Up Procedures

For those of you who are interested, Ela has agreed to come to the Hyatt to provide massages any day that we have 3 or more people who want her. So if you want a massage, please let me know a day or two in advance, including what your timing is, and I'll try to make things work.

For now, Ela said she could come on April 30th for anyone who wants a post-flight, pre-tournament massage. So if you want one, please let me know and tell me what time(s) would work for you.

I think Ela still charges \$100 for an hour. She'll be setting her table up in my room (5117) and will have a key so she can get in and can the let you in when it's your turn. Any questions, let Jan know!



**Massage Therapist  
message from Jan**

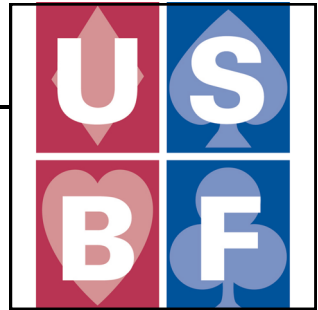


8	3	9	2	6	1	5	4	7
2	4	7	8	5	9	3	1	6
6	1	5	3	7	4	2	8	9
4	6	2	7	1	8	9	3	5
1	9	3	5	4	6	7	2	8
7	5	8	9	2	3	1	6	4
5	2	6	4	3	7	8	9	1
3	8	4	1	9	5	6	7	2
9	7	1	6	8	2	4	5	3

9	1	3	6	8	7	4	2	5
8	7	2	3	5	4	9	1	6
6	4	5	1	2	9	7	8	3
2	3	7	9	4	5	8	6	1
5	6	8	7	1	2	3	9	4
4	9	1	8	3	6	2	5	7
1	2	4	5	9	3	6	7	8
7	8	9	4	6	1	5	3	2
3	5	6	2	7	8	1	4	9

## Sudoku Answers Puzzles on Page 7

### Answer to Sudoku 1      Answer to Sudoku 2



## USBF Supporting Membership

If you don't want to play in the USBF Championships that choose teams to represent the USA in the World Bridge Federation Championships, but do want to aid our events, a **Supporting Membership** can be the perfect way for you to be involved.

A Supporting Membership is \$25 for one year (\$75 for 3 years) and your donation will be used to cover inevitable expenses: attorney fees, accounting fees, website support services, tournament directors, insurance, WBF dues, and vugraph operators.

The USBF is an **all-volunteer** organization.

Our meetings are by conference call and at NABCS. Board members and the organization's officers are not compensated for meetings, travel, or hotel expenses.



What is a snake's favorite subject in school?

Hisssssss-tory

### Answer to Logic Puzzle On Page 10

1983	Alicia	Horror	Earthquakes
1973	Tate	Animation	Wildfires
1971	Skye	Mystery	Tornados
1959	Donald	Silent	Tsunamis
1947	Kenneth	Action	Volcanos

**BOARD:** 1  
**DEALER:** NORTH  
**VULNERABLE:** NONE

♠ J  
♥ AK  
♦ K643  
♣ AKQJ64

♠ QT863  
♥ JT76  
♦ 95  
♣ 97

♠ 54  
♥ 98432  
♦ AQ82  
♣ 83

Par: 430

	♣	♦	♥	♠	N
N	11	10	7	8	10
S	10	:	:	:	:
EW	2	2	6	5	2

♠ AK972  
♥ Q5  
♦ JT7  
♣ T52

Home team Visiting team Room By = IMP

On Board 1 in the Senior Semi-Finals, all four tables played in 6C. At three of those tables, the slam was defeated. Only in Lall/Goodman did the slam succeed in the Closed Room.

Three East players chose the lead of a club while Lall chose the DA. That lead may look like it helps declarer because of the position of the DK, but that's a mirage.

Declarer still has a second diamond loser.

Home team	Visiting team	Room	By	=	IMP
Wolfson	Tulin	Open	6♣ N	♣3 -1	50
		Closed	6♣ N	♣3 -1	50
Lall	Goodman	Open	6♣ N	♣3 -1	50
		Closed	6♣ N	♦A =	920

Hemant had very little information about declarer's hand other than it was very strong with clubs.

HOME CARDS SPLIT

W	N	E	S
	2♣	PASS	2♠
PASS	3♣	PASS	4♣
PASS	4♦	PASS	4♠
PASS	6♣	PASS	PASS

4D=RKC for clubs  
4S=1 KC

♠ QT863  
♥ JT76  
♦ 95  
♣ 97

W Reese Milner

♠ J  
♥ AK  
♦ K643  
♣ AKQJ64

N Andy Goodman

♠ 54  
♥ 98432  
♦ AQ82  
♣ 83

E Hemant Lal

♠ AK972  
♥ Q5  
♦ JT7  
♣ T52

Mike Bassell

Score card >  
Frequency >

DEALER WEST 1 EAST NORTH 6

He might have inferred from the ace ask that declarer had a second round diamond control and that might have made defense easier.

At the table, once he led the DA, he was committed to continuing diamonds. This sealed his fate.

Goodman won trick two with the jack in dummy and claimed two spades, two hearts, two diamonds, and six clubs.

Contract making.

14 IMPs to Goodman

At the other table, Rodwell had no chance. He won the club lead in hand and cashed a second high club, pulling trump. He went to dummy with a high spade, cashed the other high spade shedding a diamond. He played the D7 to the king and ace and conceded down one.

14 IMPs to Goodman

In the Beth Palmer Women's, Olivia Schireson declared 6C in the Open Room. Linda Lewis led the C3 and the slam was down one as it was at the three tables in the Seniors. In the Closed Room, Cheri Bjerkan declared 5C on a Precision auction where Cheri opened 1 strong, artificial, forcing club and Rozanne Pollack responded 1S showing 5+ spades and 9+ HCP. Cheri successfully took 11 tricks.

10 IMPs to Cooper

**BOARD:** 2  
**DEALER:** EAST  
**VULNERABLE:** N-S

♠ 9  
 ♥ AKQ6  
 ♦ AT963  
 ♣ A94

♠ A6  
 ♥ 9842  
 ♦ Q72  
 ♣ KQJ2

♠ KJ8754  
 ♥ 75  
 ♦ J5  
 ♣ 763

♠ QT32  
 ♥ JT3  
 ♦ K84  
 ♣ T85

Par: 140

NS	♣ 7	♦ 10	♥ 9	♠ 6	N
EW	5	3	4	7	4

Home team	Visiting team	Room	By	=	IMP
Wolfson	Tulin	Open 3♣	N	♥7 -2	200
		Closed 2♠x	E	♥J =	470
Lall	Goodman	Open 3♦	N	♥7 +1	130
		Closed 2♠x	E	♥J -1	100

On Board 2 in the Seniors, two tables played in 2SX E/W.

North/South has no makeable game so this seems like a reasonable route to their best plus score.

In the Beth Palmer Women's, Schireson declared 3D taking 9 tricks for +110 while in the other room, Pol-lack declared 3NT, failing when Sanborn led the CQ (Rusinow), setting up three quick club tricks to go with the defense's two top spades!  
 7 IMPs to Baker

HOME CARDS SPLIT

W N E S  
 2♣ PASS

Table: CL 2, Round: 1  
 N-S: Goodman 14 IMP  
 E-W: Lall 0 IMP

OTHER ROOM  
 N 3♦ +1 130

NORTH 2  
 WEST DEALER  
 SOUTH

Score card  
 Frequency

DDS

♠ 9  
 ♥ AKQ6  
 ♦ AT963  
 ♣ A94  
 N Andy Goodman

♠ A6  
 ♥ 9842  
 ♦ Q72  
 ♣ KQJ2  
 W Reese Milner

♠ KJ8754  
 ♥ 75  
 ♦ J5  
 ♣ 763  
 E Hemant Lal

♠ QT32  
 ♥ JT3  
 ♦ K84  
 ♣ T85  
 S Mike Passell

In the Closed Room of Lall/Goodman, Passell led the HJ and continued with the HT. Goodman overtook the ten with the queen and in the fullness of time, the defense came to two hearts, two diamonds, a club and a spade to defeat the partscore one trick.

1 IMP to Lall when North/South succeeded in 3D in the Open Room.

The auction was the same in the Closed Room of Tulin/Wolfson, but the play and result were not.

Tulin, like Passell, led the HJ, however, at trick two, Tulin switched gears. He led the DK! N/S could still defeat the contract, taking the same tricks as above, however, when the DK held, Tulin continued with the D8. Becker played dummy's seven; Cohler won the ace and Becker followed with the knave. All would not have mattered had Cohler not been fooled into thinking his partner had a doubleton diamond! Cohler led the D9 for Tulin to ruff and was disappointed when Stan followed with the 4 while Becker pitched a heart!

The heart loser went away and Becker came to 8 tricks. 7 IMPs to Wolfson

HOME CARDS SPLIT

W N E S  
 2♣ PASS

Table: CL 1, Round: 1  
 N-S: Tulin 0 IMP  
 E-W: Wolfson 0 IMP

OTHER ROOM  
 N 3♣ -2 -200

NORTH 2  
 WEST DEALER  
 SOUTH

Score card  
 Frequency

DDS

♠ 9  
 ♥ AKQ6  
 ♦ AT963  
 ♣ A94  
 N Gary Cohler

♠ A6  
 ♥ 9842  
 ♦ Q72  
 ♣ KQJ2  
 W Michael Kamil

♠ KJ8754  
 ♥ 75  
 ♦ J5  
 ♣ 763  
 E Mike Becker

♠ QT32  
 ♥ JT3  
 ♦ K84  
 ♣ T85  
 S Stanlev Tulin



**BOARD:** 4  
**DEALER:** WEST  
**VULNERABLE:** ALL

♠ AJ632  
 ♥ A7  
 ♦ T5  
 ♣ J854

♠ K  
 ♥ KJT64  
 ♦ A63  
 ♣ A762

♠ Q87  
 ♥ 3  
 ♦ QJ9842  
 ♣ K93

Par: -630

	♣	♦	♥	♠	N
NS	4	2	5	7	3
EW	9	11	8	6	10

♠ T954  
 ♥ Q9852  
 ♦ K7  
 ♣ QT

Home team	Visiting team	Room	By	=	IMP			
					NS	EW		
Wolfson	Tulin	Open	4♦	E	♠5	=	130	2
		Closed	3♠	N	♥3	-2	200	
Lall	Goodman	Open	3♠	N	♥3	-2	200	9
		Closed	5♦	E	♠T	=	600	

On Board 4, Lall and Milner were the only pair in the Mixed to reach the diamond game. Lall did well to double over 1S. His hand is imperfect but he has values and wanted to convey that to his partner. Milner did well to double over 3S giving Lall the impetus to jump to game.

In the Beth Palmer, there was a 1 IMP swing on this board when Lewis declared 3NT making 4 and Meyers declared 5D making 5.

E/W lost a heart and a spade and won 9 IMPs for the effort.

HOME	CARDS	SPLIT	
W	N	E	S
1♥	1♠	DBL	3♠
DBL	PASS	5♦	PASS
PASS	PASS		

In the other room, N/S played 3S down two on this auction:

Koneru Rodwell Pratap Levin

W	N	E	S
1♥	1♠	1NT	2♠
DBL	PASS	3♦	3♠
PASS	PASS	PASS	

The screenshot shows a bridge game interface with the following details:

- North (Andy Goodman):** ♠ AJ632, ♥ A7, ♦ T5, ♣ J854
- West (Reese Milner):** ♠ K, ♥ KJT64, ♦ A63, ♣ A762
- East (Hemant Lall):** ♠ Q87, ♥ 3, ♦ QJ9842, ♣ K93
- South (Mike Passell):** ♠ T954, ♥ Q9852, ♦ K7, ♣ QT
- Bidding:** W: 1♥, N: 1♠, E: DBL, S: 3♠. W: DBL, N: PASS, E: 5♦, S: PASS. W: PASS, N: PASS.
- Score:** 15 (NS) vs 9 (EW).

**BOARD:** 14  
**DEALER:** EAST  
**VULNERABLE:** NONE

♠ T964  
 ♥ AT6  
 ♦ AT94  
 ♣ T8

♠ A J 3  
 ♥ 8 7 2  
 ♦ Q 7 3  
 ♣ Q J 5 3

♠ K Q 7 5  
 ♥ K 5 3  
 ♦ K  
 ♣ K 9 7 6 2

♠ 8 2  
 ♥ Q J 9 4  
 ♦ J 8 6 5 2  
 ♣ A 4

Par: -100

	♣	♦	♥	♠	N
NS	3	8	7	4	4
EW	9	5	5	8	7

Home team Visiting team Room By = IMP

On Board 14, 3 tables played in part scores.

Only Milner/Lall bid to game.

Game can be defeated if one follows the age old adage, "4th from your longest and strongest vs NT!"

Home team	Visiting team	Room	By	Contract	Score	IMP
Wolfson	Tulin	▶	Open	3♣ W ♣T	+1	130
				Closed	1N W ♠4	+2
Lall	Goodman	▶	Open	1N W ♠4	+2	150
				Closed	3N W ♠4	=

Goodman disdained the adage and led the S4 instead of the D4!

The lead of a diamond will set up 4 quick diamond tricks for N/S when they gain the lead next with one of their aces.

North/South will need to be careful not to block diamonds to collect ALL their tricks, however, even if they take only three of their diamonds and the two round ones, the contract will fail.

HOME CARDS SPLIT

LoveBridge

W N E S

		1♣	PASS
1NT	PASS	2NT	PASS
3NT	PASS	PASS	PASS

Table: CL 2, Round: 1  
 N-S: Goodman 22 IMP  
 E-W: Lall 11 IMP

OTHER ROOM  
 W 1N +2 -150

Score card  
 Frequency

DDS

♠ T964  
 ♥ AT6  
 ♦ AT94  
 ♣ T8

N Andy Goodman

♠ A J 3  
 ♥ 8 7 2  
 ♦ Q 7 3  
 ♣ Q J 5 3

W Reese Milner

♠ K Q 7 5  
 ♥ K 5 3  
 ♦ K  
 ♣ K 9 7 6 2

E Hemant Lal

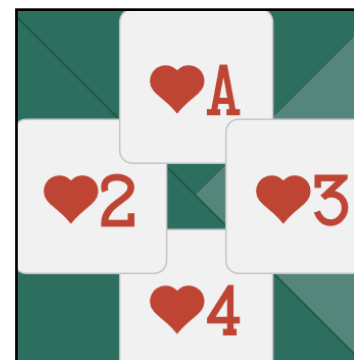
♠ 8 2  
 ♥ Q J 9 4  
 ♦ J 8 6 5 2  
 ♣ A 4

S Mike Passell

When Goodman led the spade, Milner won in dummy. He knocked out the CA. Passell shifted to the H4 and we have a wish trick:

Goodman continued hearts.  
 Milner claimed 9 tricks.  
 6 IMPs to Lall

No swing in the Beth Palmer Women's event... both tables playing in 1NT making 3.



**BOARD:** 11  
**DEALER:** SOUTH  
**VULNERABLE:** NONE

♠ A9852  
♥ 2  
♦ KT974  
♣ 32

♠ K764  
♥ KJ854  
♦ 832  
♣ 7

♠ QJ3  
♥ Q63  
♦ 6  
♣ QJT654

♠ T  
♥ AT97  
♦ AQJ5  
♣ AK98

**Par: 920**

	♣	♦	♥	♠	N
N	8	12	7	8	9
S	:	:	:	9	:
EW	4	0	6	3	3

Home team Visiting team Room By = IMP  
NS EW Home Visiting

On Board 11, both tables in Wolfson/Tulin reached 6D, while both tables in Lall/Goodman reached 3NT.

3NT made in both rooms, Goodman gaining 1 IMP when their South player made four.

<b>Wolfson</b>	<b>Tulin</b>	Open	6♦	S	♣7	=	920	
		Closed	6♦	S	♦3	-1	50	14
<b>Lall</b>	<b>Goodman</b>	Open	3N	S	♥5	=	400	
		Closed	3N	S	♥5	+1	430	1

HOME CARDS SPLIT

W N E S

PASS 1♠ PASS 2NT  
PASS 3♥ PASS 3NT  
PASS 4♦ PASS 4♥  
PASS 5♣ PASS 6♠

3H=spades  
5D=2 with the Q

♠ A9852  
♥ 2  
♦ KT974  
♣ 32  
N David Berkowitz

♠ K764  
♥ KJ854  
♦ 832  
♣ 7  
W Kit Woolsey

♠ QJ3  
♥ Q63  
♦ 6  
♣ QJT654  
E Bart Bramley

♠ T  
♥ AT97  
♦ AQJ5  
♣ AK98  
S Steve Garner

DDS

In the other match, in the Open Room, Woolsey led the C7 against 6D. Garner won the king and played the ace. Woolsey ruffed and played a heart which Garner won. Garner cashed the SA and went into a heart/spade crossruff to take 12 tricks.

In the other room, Kamil led a small trump. Tulin won the 7 in dummy. He played the H2 off dummy creating this wish trick:



Tulin ruffed a heart in dummy and returned to hand with a club. He was home free if he played a spade to the ace and went into the same crossruff as Garner. However... Tulin ruffed another heart and played a club to his king. Kamil ruffed and played the D8 leaving any hope of a crossruff short of tricks!

Note: Kamil's opening trump lead was brilliant so long as he could gain the lead in time to repeat it. 14 IMPs to Wolfson

HOME CARDS SPLIT

W N E S

PASS 1♠ PASS 2♥  
PASS 4♦ PASS 4♥  
PASS 5♣ PASS 5♥  
PASS 6♠ PASS 6♠

5D=2 with the Q  
6D=no kings

♠ A9852  
♥ 2  
♦ KT974  
♣ 32  
N Gary Cohler

♠ K764  
♥ KJ854  
♦ 832  
♣ 7  
W Michael Kamil

♠ QJ3  
♥ Q63  
♦ 6  
♣ QJT654  
E Mike Becke

♠ T  
♥ AT97  
♦ AQJ5  
♣ AK98  
S Stanley Tulin

DDS

17 No swing in the Beth Palmer Women's where both tables played and made 3NT.



This was the scorecard in the Beth Palmer Women's in the second segment:

Baker										VS 58 - 2 IMP		Cooper									
Open room										Closed room											
Olivia Schireson										Lynne Feldman											
Rozanne Pollack					Cheri Bjerkan					Sandra Rimstedt					Cecilia Dwyer Rimstedt						
Lynn Baker										Kitty Cooper											
#	▶	🃏	By	1	=	★	▶	🃏	By	1	=	★	P	NS	EW	Home	Visiting				
16	▶	2♥	N	♠Q	-2			▶	4♠	E	♥9	=			100	620	11				
17	▶	3♠	S	♦7	=	140		▶	3♠	S	♣3	-1			140	50	5				
18	▶	3N	E	♣3	-1	50		▶	3N	W	♥3	+1			50	430	10				
19	▶	2♦	E	♥3	+1	♣♣	110		▶	3N	W	♠5	=			600	10				
20	▶	3N	W	♦Q	+1		630		▶	3N	W	♥5	=			600	1				
21	▶	6♦	W	♥K	=		920		▶	6♦	W	♥K	=			920	-	-			
22	▶	4♥	W	♦5	=		620		▶	4♠	E	♦A	=			620	-	-			
23	▶	3♦	E	♠2	+2		150		▶	3♦	W	♥9	+1			130	1				
24	▶	3N	E	♣J	+2		460		▶	3N	W	♥3	+2			460	-	-			
25	▶	4♠	N	♣T	+2	480			▶	4♠	N	♦Q	=	420		420	2				
26	▶	4♥	W	♦8	+1		650		▶	4♥	W	♦8	+1			650	-	-			
27	▶	3N	W	♣2	=		400		▶	3N	W	♣5	=			400	-	-			
28	▶	2♥	E	♦A	-1	50			▶	3N	N	♥K	-3			300	8				
29	▶	2♠	E	♣A	+1		140		▶	4♠	W	♠4	=			620	10				
30	▶	1N	E	♣2	+1		120		▶	3♥	W	♠3	+1			170	2				

It must have felt discouraging to be North/South! In the Closed Room, N/S had only one score on their side. In the Open Room, N/S has only 4. In the Open Room, only 4.

While this is not always indicative of a blowout since both tables had the same cards, it appears that Baker has a commanding lead this segment, 58-2. Fortunately for Cooper, there are many boards to go and scores rate to go back and forth in the 3 day, 180 board event!

**BOARD:** 45  
**DEALER:** NORTH  
**VULNERABLE:** ALL

♠ JT4  
♥ K763  
♦ AT864  
♣ 4

♠ A75  
♥ 852  
♦ Q975  
♣ KQ2

♠ 93  
♥ A94  
♦ K32  
♣ A8765

Par: 110

NS	♣	♦	♥	♠	N
EW	5	7	7	8	6
	7	6	5	5	6

Home team Visiting team Room By = IMP

Baker Cooper Open 3N W ♠J -3 300 7  
Closed Passed out

It isn't often that one table passes out a board while the other table bids to game... especially in a contested auction.

We know how the auction progressed in the Closed Room of the Beth Palmer Women's.

In the Open Room, Feldman opened her 11 count in second seat. The opponents overcalled and raised spades. Cooper bid 3NT.

HOME CARDS SPLIT

W	N	E	S
PASS	1♣	1♠	
2♦	2♠	3♦	PASS
3NT	PASS	PASS	PASS

Table: OP W3, Round: 3  
N-S: Baker 104 IMP  
E-W: Cooper 37 IMP

OTHER ROOM PASSED OUT Other table >

DEALER 45 EAST THINGS SOUTH

Score card >  
Frequency >

LoveBridge

♠ JT4  
♥ K763  
♦ AT864  
♣ 4

N Cecilia Dwyer Rimstedt

♠ A75  
♥ 852  
♦ Q975  
♣ KQ2

W Kitty Cooper

♠ 93  
♥ A94  
♦ K32  
♣ A8765

E Lynne Feldman

♠ KQ862  
♥ QJT  
♦ J  
♣ JT93

S Sandra Rimstedt

WEST 3NT

Cecilia Dwyer Rimstedt started with the SJ followed by the ST to her sister's king. Sandra cleared the spades.

Kitty played three rounds of clubs ending in dummy and played a diamond to the J, Q, A.

Cecilia played the H6, Kitty winning the ace in dummy. Kitty, with no hope for 9 tricks, cashed out the DK and the two good clubs and conceded down 3. 7 IMPs to Baker

In the Seniors (below), the Open Room of Lall/Goodman passed the hand out, as the ladies did in the Closed Room above.

3C by East failed in the Open Room of Wolfson/Tulin and the Closed Room of Lall/Goodman.

2NT went down one in the Closed Room of Wolfson/Tulin when Katz led the HJ as opposed to the spade. Katz didn't overcall so Sonty couldn't raise. Without benefit of that information, Katz deemed it best to lead Rusinow from three touching honors in hearts as opposed to a spade from KQ862. 3 IMPs to Wolfson 5 IMPs to Goodman

Wolfson	Tulin	Open	3♣	E ♠Q	-2	200	3
		Closed	2N	E ♥J	-1	100	
Lall	Goodman	Open	Passed out				5
		Closed	3♣	E ♠K	-2	200	

A patient came to the hospital with a burned right hand. As the doctor took down his medical history, he asked the injured man, "Do you smoke?"

"Yeah, all the time, cigars," said the patient. Concerned, the doctor told him, "You should consider quitting." "No, it's OK," said the patient. "I smoke with my left hand."

**For Gary...**



# Cross IMPs

## Beth Palmer Women's

1.	Cecilia Dwyer Rimstedt - Sandra Rimstedt Baker	2.51	113.00	45
2.	Lynn Baker - Olivia Schireson	Baker	1.63	49.00 30
3.	Jill Meyers - Kerri Sanborn	Baker	1.11	50.00 45
4.	Disa Eythorsdottir - Linda Lewis	Cooper	-1.11	-50.00 45
5.	Cheri Bjerkan - Rozanne Pollack	Cooper	-1.80	-81.00 45
6.	Kitty Cooper - Lynne Feldman	Cooper	-2.70	-81.00 30

## Senior Semi-Finals

1.	Hemant Lall - Reese Milner	Lall	0.79	23.67 30
2.	Alan Sontag - Ralph Katz	Tulin	0.61	27.67 45
3.	Jeff Wolfson - Steve Garner	Wolfson	0.53	16.00 30
4.	Michael Kamil - Mike Becker	Wolfson	0.44	19.67 45
5.	Andy Goodman - Mike Passell	Goodman	0.20	6.00 30
6.	Michael Rosenberg - Zia Mahmood	Lall	0.17	7.67 45
7.	David Berkowitz - Steve Garner	Wolfson	0.14	4.33 30
8.	Bobby Levin - Eric Rodwell	Lall	0.13	5.67 45
9.	Pratap Rajadhyaksha - Venkatrao Koneru	Goodman	-0.17	-7.67 45
10.	David Berkowitz - Michael Kamil	Wolfson	-0.51	-7.67 15
11.	Bart Bramley - Kit Woolsey	Tulin	-0.76	-34.00 45
12.	Billy Cohen - Ron Smith	Goodman	-0.79	-35.33 45
13.	Gary Cohler - Stanley Tulin	Tulin	-0.87	-26.00 30