

Volume 18, Issue 23
May 22, 2024

* Simson slow play penalties 1.5+1.5 imps
* Lall slow play penalty 3.5 imps
* Goodman slow play penalty 0.25 imps
* Tulin TD-calculated score in Set 1 because board 15 was only played at one table of the match

| QuarterFinal (120 boards) | | | Set score of form "Ax" or "Rx" indicates pending Appeal or Ruling. IMPs Total may change. | | | | | | | | |
|---------------------------|------------------------------------|------------|--|--------|--------|--------|--------|--------|--------|--------|----------------|
| 21-May-2024 | | | <i>The colored score boxes indicate the team with seating rights for that segment of play.</i> | | | | | | | | |
| # | TEAM | IMPs Total | SET #1 | SET #2 | SET #3 | SET #4 | SET #5 | SET #6 | SET #7 | SET #8 | Penalty (IMPs) |
| 1 | Wolfson - wins tie | 120 | 26 | 21 | 37 | 36 | | | | | |
| 8 | Cappelli | 103 | 41 | 17 | 27 | 18 | | | | | |
| 2 | Lall | 90.5 | 10 | 18 | 8 | 58 | | | | | -3.5 |
| 7 | Aker - wins tie | 93 | 24 | 24 | 11 | 34 | | | | | |
| 3 | Goodman - wins tie | 110.75 | 31 | 13 | 29 | 38 | | | | | -0.25 |
| 6 | Hamman | 156 | 47 | 59 | 43 | 7 | | | | | |
| 4 | Tulin - wins tie | 195.25 | 44.25 | 30 | 74 | 47 | | | | | |
| 5 | Simson | 52 | 11 | 37 | 6 | 28 | | | | | -30 |

USBF President
Aaron Silverstein
USBF Vice President
Steve Garner
USBF COO & Secretary
Jan Martel
USBF CFO & Treasurer
Max Schireson
USBF Recorder
Jack Oest
Chief Communications Officer
Suzi Subeck
Directors
McKenzie Myers, DIC
Ken Horwedel
Chris Wiegand
Tournament Organizer
Jan Martel
Software Expert
Al Hollander
VuGraph Organizers
Rob Barrington

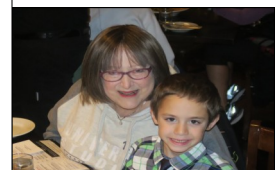
Appeals Administrator
Suzi Subeck, Chairman
Appeals Panel:
Wafik Abdou
Dana Berkowitz
Cheri Bjerkan
Gary Cohler
Rich DeMartino
Ish DelMonte
Mitch Dunitz
Marty Fleisher
Ron Gerard
Marty Hirschman
George Jacobs
Ralph Katz
Bobby Levin
Chip Martel
Eric Rodwell
Danny Sprung
Josh Stark
Adam Wildavsky
Bulletin Editor
Suzi Subeck
Hospitality
Julie Arbit
Marie-France Benoit

UNITED STATES BRIDGE CHAMPIONSHIPS
"Trials" and Tribulations

| 1. | Bart Bramley - Kit Woolsey | Tulin | 1.31 | 57.71 | 44 |
|-----|--|----------|-------|--------|----|
| 2. | John Schermer - Neil Silverman | Hamman | 1.21 | 36.43 | 30 |
| 3. | Alan Sontag - Ralph Katz | Tulin | 1.11 | 50.14 | 45 |
| 4. | Bob Hamman - Neil Chambers | Hamman | 0.97 | 43.55 | 45 |
| 5. | Michael Rosenberg - Zia Mahmood | Lall | 0.88 | 39.71 | 45 |
| 6. | Gary Cohler - Stanley Tulin | Tulin | 0.80 | 24.02 | 30 |
| 7. | David Berkowitz - Michael Kamil | Wolfson | 0.69 | 10.29 | 15 |
| 8. | Michael Kamil - Mike Becker | Wolfson | 0.34 | 15.19 | 45 |
| 9. | David Berkowitz - Steve Garner | Wolfson | 0.19 | 5.74 | 30 |
| 10. | Glenn Milgrim - Jeff Aker | Aker | 0.16 | 7.29 | 45 |
| 11. | Allan Falk - John Lusky | Aker | 0.07 | 3.29 | 45 |
| 12. | Bob Cappelli - Mark Aquino | Cappelli | 0.06 | 3.69 | 60 |
| 13. | Billy Cohen - Ron Smith | Goodman | 0.03 | 1.17 | 45 |
| 14. | Bobby Levin - Eric Rodwell | Lall | -0.16 | -7.29 | 45 |
| 15. | Barry Rigal - Ron Rubin | Aker | -0.22 | -6.57 | 30 |
| 16. | Jeff Wolfson - Steve Garner | Wolfson | -0.30 | -9.00 | 30 |
| 17. | Bob Bitterman - Mark Bendure | Cappelli | -0.43 | -25.90 | 60 |
| 18. | Pratap Rajadhyaksha - Venkatrao Koneru | Goodman | -0.47 | -20.98 | 45 |
| 19. | Fred Stewart - Steve Beatty | Simson | -0.59 | -26.00 | 44 |
| 20. | Adam Wildavsky - Doug Doub | Hamman | -0.65 | -29.17 | 45 |
| 21. | Curtis Cheek - Doug Simson | Simson | -0.87 | -26.00 | 30 |
| 22. | Andy Goodman - Mike Passell | Goodman | -1.03 | -31.00 | 30 |
| 23. | Hemant Lall - Reese Milner | Lall | -1.21 | -36.43 | 30 |
| 24. | Jim Krekorian - Peter Weichsel | Simson | -1.78 | -79.88 | 45 |

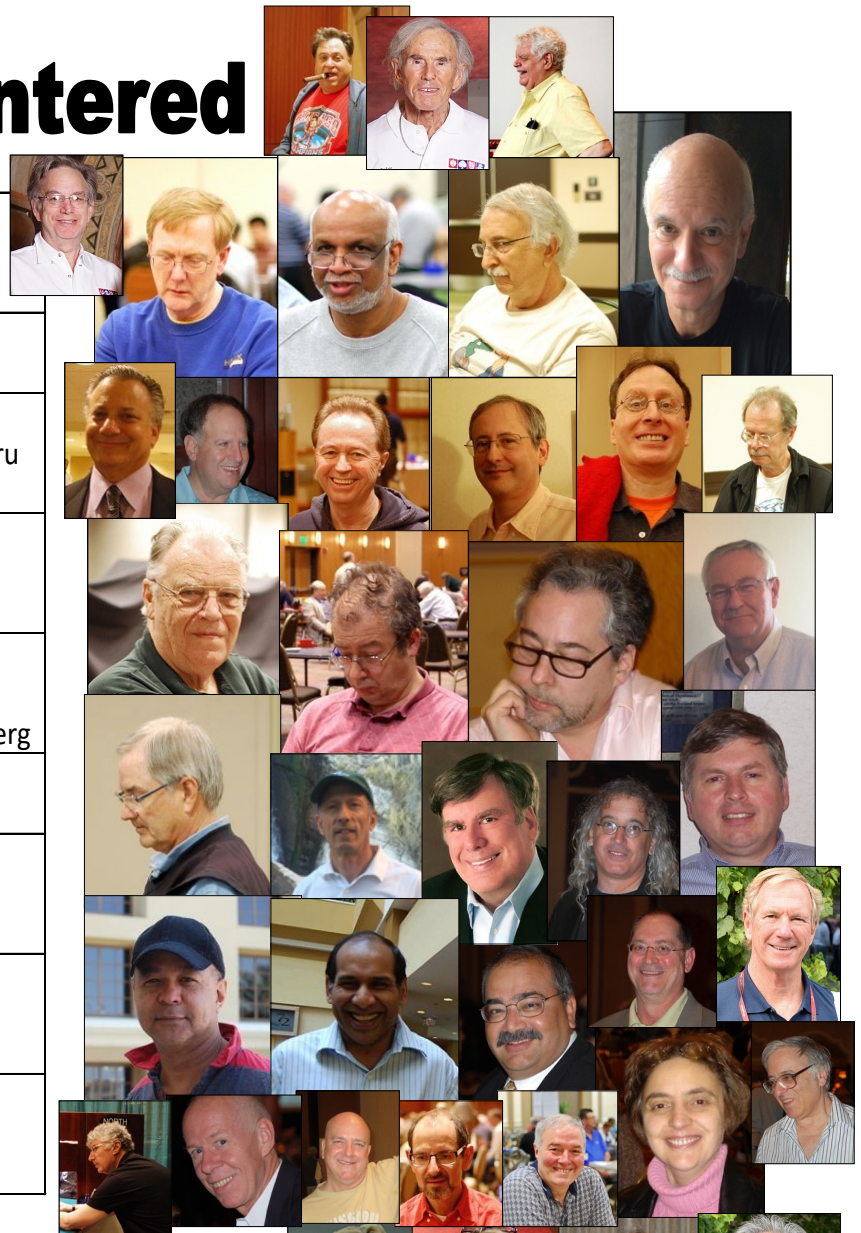
Cross Imps

Ed. Note: With delayed broadcasting, it is challenging to watch every hand for write ups. If anyone has a particularly interesting hand, please send me the board # & match # with any important details. I will do my best to review and include it. Email to stansubeck@prodigy.net.
Thank you!



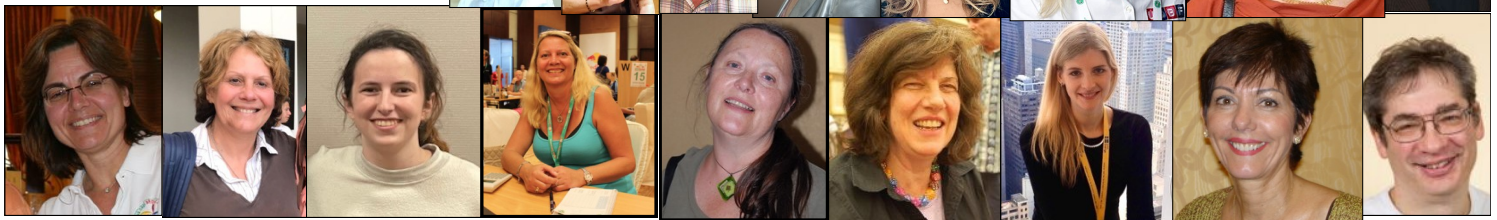
Senior Teams Entered

| | | |
|-----------------|--|---|
| Aker | Jeff Aker, Capt John Lusky Barry Rigal | Allan Falk Glenn Milgrim Ron Rubin |
| Cappelli | Bob Cappelli, Capt Bob Bitterman | Mark Aquino Mark Bendure |
| Goodman | Andy Goodman, Capt Pratap Rajadhyaksha Ron Smith | Mike Passell Venkatrao Koneru Billy Cohen |
| Hamman | Bob Hamman, Capt Doug Doub John Schermer | Neil Chambers Adam Wildavsky Neil Silverman |
| Lall | Hemant Lall, Capt Eric Rodwell Zia Mahmood | Reese Milner Bobby Levin Michael Rosenberg |
| Reynolds | Tom Reynolds, Capt Bernie Greenspan | Lance Kerr Fred Schenker |
| Simson | Doug Simson, Capt Jim Krekorian Steve Beatty | Curtis Cheek Peter Weichsel Fred Stewart |
| Tulin | Gary Cohler, Capt Alan Sontag Kit Woolsey | Stan Tulin Ralph Katz Bart Bramley |
| Wolfson | Jeff Wolfson, Capt David Berkowitz Mike Becker | Steve Garner Michael Kamil |



Women's Teams Entered

| | | |
|---------------|---|--|
| Baker | Lynn Baker Kerri Sanborn Cecilia Dwyer Rimstedt Sam Dinkin, NPC | Olivia Schireson Jill Meyers Sandra Rimstedt |
| Cooper | Kitty Cooper, Capt Linda Lewis Rozanne Pollack | Lynne Feldman Disa Eythorsdottir Cheri Bjerkan |



Q: If you multiply this number by any other number, the answer will always be the same. What number is this?

A: Zero

Q: What 3 numbers give the same result when multiplied and added together?

A: 1, 2, and 3 ($1 + 2 + 3 = 6$ and $1 \times 2 \times 3 = 6$).

Q: A tree doubled in height each year until it reached its maximum height over the course of ten years. How many years did it take for the tree to reach half its maximum height?

A: Nine years.

Q: Pronounced as 1 letter, And written with 3, 2 letters there are, and 2 only in me. I'm double, I'm single, I'm black blue, and gray, I'm read from both ends, and the same either way. What am I?

A: Eye

Q: Forward, I am heavy; backward, I am not. What am I?

A: A ton

Q: What can you hold in your right hand, but never in your left hand?

A: Your left hand.

Q: If two snakes marry, what will their towels say?

A: Hiss and hers

Q: What does a man do only once in his lifetime, but women do once a year after they are 29?

A: Turn 30

Q: Four cars come to a four-way stop, each coming from a different direction. They can't decide who got there first, so they all go forward at the same time. All 4 cars go, but none crash into each other. How is this possible?

A: They all made right-hand turns.

Q: I have a head like a cat and feet like a cat, but I am not a cat. What am I?

A: A kitten.

Q: What has hands but cannot clap?

A: A clock.

Q: Paul's height is six feet, he's an assistant at a butcher's shop, and wears size 9 shoes. What does he weigh?

A: Meat.

Q: What gets broken without being held?

A: A promise.

Q: Poor people have it. Rich people need it. If you eat it you die. What is it?

A: Nothing.

Q: What is the longest word in the dictionary?

A: Smiles, because there is a mile between each 's'.

Q: Throw away the outside and cook the inside, then eat the outside and throw away the inside. What is it?

A: Corn on the cob.

Q: What is at the end of a rainbow?

A: The letter W!

Q: What kind of tree can you carry in your hand?

A: A palm!

Riddles...

(Continued on page 6)

Senior Schedule

| SENIOR SCHEDULE | | | |
|---|--------|---|--|
| Round Robin or KO - Schedule will depend on number of teams | | | |
| Day | Date | Time | Boards |
| Sunday | May 19 | | |
| Monday | May 20 | | |
| Quarterfinal | | | |
| Tuesday | May 21 | 10:00 - 12:00 12:15 - 2:15 3:30 - 5:30 5:45 - 7:45 | Segment 1 Boards 1-15 Segment 2 Boards 16-30 75 minute Break Segment 3 Boards 31-45 Segment 4 Boards 46-60 |
| Wednesday | May 22 | 10:00 - 12:00 12:15 - 2:15 3:30 - 5:30 5:45 - 7:45 | Segment 5 Boards 1-15 Segment 6 Boards 16-30 75 minute Break Segment 7 Boards 31-45 Segment 8 Boards 46-60 |
| Semifinal | | | |
| Thursday | May 23 | 10:00 - 12:00 12:15 - 2:15 3:30 - 5:30 5:45 - 7:45 | Segment 1 Boards 1-15 Segment 2 Boards 16-30 75 minute Break Segment 3 Boards 31-45 Segment 4 Boards 46-60 |
| Friday | May 24 | 10:00 - 12:00 12:15 - 2:15 3:30 - 5:30 5:45 - 7:45 | Segment 5 Boards 1-15 Segment 6 Boards 16-30 75 minute Break Segment 7 Boards 31-45 Segment 8 Boards 46-60 |
| Final | | | |
| Saturday | May 25 | 10:00 - 12:00 12:15 - 2:15 3:30 - 5:30 5:45 - 7:45 | Segment 1 Boards 1-15 Segment 2 Boards 16-30 75 minute Break Segment 3 Boards 31-45 Segment 4 Boards 46-60 |
| Sunday | May 26 | 10:00 - 12:00 12:15 - 2:15 3:30 - 5:30 5:45 - 7:45 | Segment 5 Boards 1-15 Segment 6 Boards 16-30 75 minute Break Segment 7 Boards 31-45 Segment 8 Boards 46-60 |

No Electronic Devices are Permitted in the Playing Area.

This applies to players AND kibitzers.

Severe penalties will be assessed for violation of this rule.

Please turn off all cell phones and check them at the door.

The USBF reserves the right to wad anyone entering the playing field.



| Lovebridge practice sessions | | | |
|------------------------------|----------|-------------------|--|
| Day | Date | Time (CDT) | |
| Tuesday | April 30 | 5:00 PM - 7:00 PM | |
| Thursday | May 9 | 5:00 PM - 7:00 PM | |
| Saturday | May 18 | 5:00 PM - 7:00 PM | |
| Wednesday | May 22 | 5:00 PM - 7:00 PM | |

Location: TBD

| PRE-TOURNAMENT CAPTAINS & PLAYERS MEETINGS | | | |
|--|---------------------|--------------|------------|
| On Zoom | | | |
| Event | Day | Date | Time (CDT) |
| Open | Tuesday | April 30 | 9:00 PM |
| Mixed | Thursday | May 9 | 9:00 PM |
| Senior | Saturday | May 18 | 9:00 PM |
| Women's | Monday or Wednesday | May 20 or 22 | 9:00 PM |

US\$19.95 | GBP 15.95
978-1-77140-264-4

Available to order today from your favourite bookstore.

| Beth Palmer WOMEN'S SCHEDULE | | | |
|------------------------------|--------|---|---|
| Final - 3 days, 180 boards | | | |
| Day | Date | Time | Boards |
| Thursday | May 23 | 10:00 - 12:00 12:15 - 2:15 3:30 - 5:30 5:45 - 7:45 | Segment 1 Boards 1-15 Segment 2 Boards 16-30 75 minute Break Segment 3 Boards 31-45 Segment 4 Boards 46-60 |
| Friday | May 24 | 10:00 - 12:00 12:15 - 2:15 3:30 - 5:30 5:45 - 7:45 | Segment 5 Boards 1-15 Segment 6 Boards 16-30 75 minute Break Segment 7 Boards 31-45 Segment 8 Boards 46-60 |
| Saturday | May 25 | 10:00 - 12:00 12:15 - 2:15 3:30 - 5:30 5:45 - 7:45 | Segment 9 Boards 1-15 Segment 10 Boards 16-30 75 minute Break Segment 11 Boards 31-45 Segment 12 Boards 46-60 |

Beth Palmer Women's Schedule

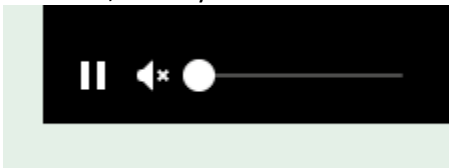
The Art of Becoming A Top Bridge Player

Samantha Punch with Tim Rees

Foreword by Jeff Meckstroth

2024 USBCs Kibitzing - There will be delayed kibitzing for all of the 2024 USBCs on LoveBridge

You can follow the USBC on the <https://vugraph.lovebridge.com/> website. If you get to the voice commentary and there is no sound, you need to "unmute." When you first get to the page, there is a small icon of a speaker in the middle of your screen with an x on it. Click there to unmute. If you miss that icon, move your cursor to the bottom left of the screen and you should see a something like this:



Click on the speaker to unmute.

Vugraph is delayed for 30 minutes or until all tables have completed play on a board, whichever is later.

Kibitzing Schedule (EDT)

For all KO days of the 2024 USBCs, kibitzing times will be :

Segment 1: 11:30 am EDT; Segment 2: 1:45 pm EDT

BREAK

Segment 3: 5:00 pm EDT; Segment 4: 7:15 pm EDT

For Round Robin days, each kibitzing segment will start 30 minutes after play starts. No voice for RR's.

To listen to commentary, search for the TV icon! It will send you to the page where you can choose from the available live commentators. If it doesn't do anything, no one is commenting.

Deep Involvement: Choose the "Match view" at the starting page of your event. Your screen will be divided into 4 small screens – 2 of them showing the 2 tables of the match you choose, the other 2 having the scoresheet for your match and the current scores of the other matches. In the 2x2 view you can personalize the content in all your windows. (The 2x2 view is not available on mobiles.)

Think together!

When watching a table, click on a name and choose "Kibitz". Instead of seeing all 4 hands, you will see what the player sees, and you can decide what you would do.

More Information:

Be well informed and tell your friends: while following the play, you can click many items. The image of the sticker with the number of the board (upper right) takes you to the results of the board, in the bottom right corner, the arrow takes you to the scoresheet, the DDS shows the double dummy analyses, beside that there is a button for the other table of the same match, at the top left corner you can see the bidding with alerts and the explanations (mouse over), the tricks already played, and the double dummy analysis for the available number of tricks with the par score.

Navigation icons:

While surfing here and there in the vugraph, or amongst the archive sessions, there are icons to help you. You can always go back to the main page with the "house" or to the standings with the "scores". If you cannot see the icons, move your mouse, or touch your screen and they pop up immediately. There is a built-in back button because the back button of your browser will always take you to the starting page. If this is not what you wanted, push next in your browser and you can continue where you were.

Replay:

After the event you can find every board from every table easily. While replaying the hands, the only surprise can be the way "next board" button works. If you have arrived from a scoresheet, it navigates through the scoresheet. If you have arrived from a screen where the results were shown for a given board, the same buttons move you through the list.



I'm watching
the action.
I'm watching
The play.
It keeps
Me amused
For many
A day!



Kibitzing...

2024 USBCs Hospitality

We are returning to our pre-pandemic hospitality, with the hospitality suite (room 2321) open most of the day for socializing, Vugraph, and snacks. We will be providing breakfast and lunch each **day of play**. Marie-France Benoit will be our lead hostess, with help from Jacob Morgan and Julie Arbit, who makes the best guacamole. If you're at the tournament and can volunteer to help with hospitality (pick up items at Costco or nearby stores or restaurants, preparing food) please let Jan or Marie-France know.

Breakfast: From ^{8:30-10:30} There will be the usual breakfast food: cereal, bagels, toast, salmon, fruit, juice, coffee and tea. For those who prefer Keurig coffee, that will be available. So long as the suite doesn't become too crowded, you are welcome to eat there. No masking requirement.

Lunch: On the first four days of each event we will be serving a buffet lunch in a hotel banquet room, usually the Slate and Cyan rooms at the front of the hotel; we will have signs in the Player Break Room and Hospitality Suite with daily location. The hotel will be supplying what they do best: salads and chips. We will be bringing in 2 or 3 hot dishes from a local restaurant each day. There should be enough room for you to eat in the hotel banquet room, but you are welcome to take food from there to an outside table or to your hotel room. Lunch will be served from about half an hour before the morning session is supposed to end until about half an hour after the afternoon session starts.

After the first 4 days of each event, lunch will be available in the hospitality suite at the break. There will be a main dish (sandwiches, chicken, main dish salads, pizza) as well as tuna salad, green salad, cheese, fruit, berries, cookies or other desserts. Water and soft drinks will be available in refrigerators. As with breakfast, you are welcome to eat in the hospitality suite unless it is too crowded.

Let us know if you have specific needs. Our hosts will do their very best to accommodate you.

Playing Rooms & Player's Break Room

We welcome Marge Morgan, mother of Jacob, to the venue. Marge will help Marie-France.

We will have bottled water in the Player's Break Room (1321), as well as soft drinks, Nespresso, some packaged snacks, and some fruit. Please keep your voices down in the Break Room where we are working.

Masks will be required in playing rooms **only if your screenmate asks you to wear one**. You do not have to put on a mask when you summon a director or ask for coffee, water or an escort outside to smoke.



Marie-France



Marge Morgan

(Continued from page 3)

Q: They come out at night without being called and are lost in the day without being stolen. What are they?

A: Stars!

Q: What is always in front of you, but can't be seen?

A: The future.

Q: You'll find me in Mercury, Earth, Mars, Jupiter, Saturn, and Uranus. But never Neptune, or Venus. What am I?

A: The letter "R".

Q: How many months have 28 days?

A: Every month has 28 days.

Q: I can be cracked, made, told, and played. What am I?

A: A joke.

Q: I cannot talk, but I always reply when spoken to. What am I?

A: An echo.

Q: When is the top of a mountain similar to a savings account?

A: When it peaks one's interest.

(Continued on page 7)

| | | | | | | | | |
|---|---|--|---|---|--|---|---|---|
| | 9 | | | 4 | | | 5 | |
| 3 | | | | | | | 4 | |
| 5 | | | 9 | | | | 6 | 7 |
| | | | | 8 | | | | |
| | 5 | | | 7 | | | 1 | 2 |
| | | | 4 | 1 | | 9 | | 3 |
| | | | 6 | | | 7 | 9 | |
| | | | | 3 | | | | |
| 1 | 6 | | | | | | | |

Sudoku 1

(Continued from page 6)

Q: A man goes out for a walk during a storm with nothing to protect him from the rain. He doesn't have a hat, a hood, or an umbrella. But by the end of his walk, there isn't a single wet hair on his head. Why doesn't the man have wet hair?

A: He's bald.

Q: I love to dance, and twist. I shake my tail as I sail away. When I fly wingless into the sky. What am I?

A: A kite.

Q: When you stop to look, you can always see me. But if you try to touch me, you can never feel me. Although you walk towards me, I remain the same distance from you. What am I?

A: The horizon

Q: You see a boat filled with people. It has not sunk. But when you look back, you don't see a single person on the boat. Why?

A: All the people on board are married.

Q: What is it that no one wants to have, but no one wants to lose either?

A: A lawsuit.

(Continued on page 8)

Hard Sudoku

Sudoku Solutions on Page 12

Sudoku 2

| | | | | | | | | |
|---|---|---|---|---|---|---|---|--|
| | | | 8 | | 3 | 4 | | |
| | | | | | | | | |
| 5 | | 9 | | | 1 | | 3 | |
| 8 | | | 2 | | | | 1 | |
| 6 | 2 | | | | | 7 | | |
| | | 4 | | 5 | | | 6 | |
| | 1 | | | 7 | | | | |
| | 4 | | | 2 | | 6 | | |
| 9 | | | | 8 | | | | |

Please be "scent" sitive! Many players have allergies and have trouble breathing when perfumed aromas are present! Thank you!!



Puzzle Page ...

Summer Olympics

Find and circle all of the Summer Olympic events that are hidden in the grid.
The remaining letters spell a secret message.

Note: Similarly named events are hidden separately. For example,
SWIMMING and SYNCHRONIZED SWIMMING do not overlap.

G T T H E A T H L E T I C S F I R J M S
 T N R W E I G H T L I F T I N G U O S B
 L T I L Y M G N I T O O H S P D I C I A
 L G A L L A B Y E L L O V Y O M N A N S
 A G T B C S T R A M P O L I N I N G A K
 B N H T L Y T A O F O O T B A L L N I E
 Y I L G Y E C A E C H G G I H L G I R T
 E L O N E A T V E K Y A N P O L N X T B
 L T N I N E C E R M W T I F C A I O S A
 L S E E C O T H N S E O C C K B W B E L
 O E N O L H T A T N E P N R E D O M U L
 V R O N R E S N N I I O E D Y N R F Q T
 H W E A N T W I I A N S F S O A N A E D
 C I S C I T S A N M Y G C I M H T Y H R
 A A C C O G N I V I D M G N I M M I W S
 E A S Y R E H C R A W A T E R P O L O N
 B S O F T B A L L L L A B E S A B E C I
 G N I M M I W S D E Z I N O R H C N Y S

- | | |
|------------------|-----------------------|
| ARCHERY | FOOTBALL |
| ATHLETICS | GYMNASTICS |
| BADMINTON | HANDBALL |
| BASEBALL | HOCKEY |
| BASKETBALL | JUDO |
| BEACH VOLLEYBALL | MODERN PENTATHLON |
| BOXING | RHYTHMIC GYMNASTICS |
| CANOEING | ROWING |
| CYCLING | SHOOTING |
| DIVING | SOFTBALL |
| EQUESTRIANISM | SWIMMING |
| FENCING | SYNCHRONIZED SWIMMING |

- | |
|---------------|
| TABLE TENNIS |
| TAEKWONDO |
| TENNIS |
| TRAMPOLINING |
| TRIATHLON |
| VOLLEYBALL |
| WATER POLO |
| WEIGHTLIFTING |
| WRESTLING |
| YACHTING |



The King of Hearts
Takes much great
pride
In being either
On/Off side!

(Continued from page 7)

Q: I welcome the day with a show of light, I stealthily came here in the night. I bathe the earthy stuff at dawn, But by noon, alas! I'm gone.

A: The morning dew.

Q: What goes through cities and fields, but never moves?

A: A road.

Q: What can be touched but can't be seen?

A: Someone's heart.

Meet the Players

All three players are here!
Since this write-up,
they just keep winning!



Gary Cohler

Gary is a Grand Life Master bridge player. He has won eight North American Bridge Championships, including the Grand National Teams, five times and the Reisinger in 2006.

David Berkowitz

David Berkowitz is an American professional contract bridge player. He earned a bronze medal at the 2000 World Team Olympiad and was inducted into the ACBL Hall of Fame in 2010.



We congratulate David and wife, Lisa, on the recent birth of their first grandchild!



Janice Seamon-Molson

Janice is a multi national champion and world champion in contract bridge. As of 2016, she has won 18 North American Championships, and 4 world championships.

| | | Hurricanes | | | | | Destruction | | | | | Cities | | | | |
|-------------|----------------|------------|-------|-------|--------|-------|----------------|----------------|----------------|----------------|----------------|------------|-----------|----------|-------|---------|
| | | Audrey | Freda | Mabel | Olivia | Wilma | \$13.1 million | \$15.7 million | \$16.9 million | \$18.5 million | \$19.2 million | Alta Vista | Escondido | Hesperia | Onawa | Tomales |
| Years | 1944 | | | | | | | | | | | | | | | |
| | 1948 | | | | | | | | | | | | | | | |
| | 1952 | | | | | | | | | | | | | | | |
| | 1956 | | | | | | | | | | | | | | | |
| | 1960 | | | | | | | | | | | | | | | |
| Cities | Alta Vista | | | | | | | | | | | | | | | |
| | Escondido | | | | | | | | | | | | | | | |
| | Hesperia | | | | | | | | | | | | | | | |
| | Onawa | | | | | | | | | | | | | | | |
| | Tomales | | | | | | | | | | | | | | | |
| Destruction | \$13.1 million | | | | | | | | | | | | | | | |
| | \$15.7 million | | | | | | | | | | | | | | | |
| | \$16.9 million | | | | | | | | | | | | | | | |
| | \$18.5 million | | | | | | | | | | | | | | | |
| | \$19.2 million | | | | | | | | | | | | | | | |

**Answer
on page 12**

| Years | Hurricanes | Destruction | Cities |
|-------|------------|-------------|--------|
| 1944 | | | |
| 1948 | | | |
| 1952 | | | |
| 1956 | | | |
| 1960 | | | |

1. The storm that made landfall at Escondido was either the hurricane that caused \$19.2 million in damage or the storm that caused \$16.9 million in damage..
2. The storm that caused \$13.1 million in damage hit sometime after the storm that made landfall at Hesperia..
3. Hurricane Mabel didn't make landfall at Escondido..
4. The storm that caused \$16.9 million in damage hit 8 years after Hurricane Freda..
5. The hurricane that made landfall at Onawa caused \$18.5 million in damage..
6. The storm that made landfall at Alta Vista didn't cause exactly \$15.7 million in damage..
7. Hurricane Freda hit land at Hesperia..
8. Hurricane Mabel hit 4 years before the storm that caused \$18.5 million in damage..
9. Hurricane Audrey hit 8 years before the hurricane that caused \$15.7 million in damage..
10. Hurricane Audrey hit sometime after the storm that made landfall at Hesperia..
11. Hurricane Olivia didn't cause exactly \$18.5 million in damage..

Playing Procedures Reviewed For Those Arriving for the Womens

You will be playing on Chromebooks using LoveBridge software. The Chromebooks all have wired mice, which you may choose to use or not. They also have touch screens if you prefer that, and of course integrated keyboards. You will not be able to go to any websites other than the LoveBridge playing site from the playing room Chromebooks.

There will be 2 players in each room, one from each team in the match - North & East together and South & West together. All of the NE rooms are on the first floor; all of the SW rooms are on the second floor.

Because some of you have said that you prefer the opponents' system information on paper in addition to being available on the Chromebooks, we are asking each player to bring a copy of their SSF, convention card, and if relevant the ACBL Multi defense to the table for their opponent. If you need help printing anything, come to room 1321 before you play and one of us will print for you.

After you have finished a segment and scored with your teammates, please check the score on LoveBridge and if you disagree with it, come to room 1321 and so we can sort it out.

Captains:

Your lineup sheet been shared with you. If you can't open it, or don't understand something about it, please let us know.

For the first segment of play each day, the Away team (the team that does not have seating rights for the segment) should tell the Home team their lineup (by email, text, or an entry on the lineup sheet) no later than 8:50 am (70 minutes before play starts), and enter the lineup on their lineup sheet no later than 9:00 am. If you enter your lineup on the lineup sheet before 8:50 am, that will satisfy both requirements. The Home team should give the Away team its lineup by 8:55 am, and should also enter it on the lineup sheet no later than 9:00 am. Of course, if the Away team doesn't communicate its lineup on time, the Home team has more time.

We ask you to enter the lineup on your lineup sheet because that may be the easiest way to give your lineup to your opponent. If you leave your lineup page open on your computer or other device, it will automatically update with the opponent's lineup when they enter it. Also, especially for the first segment of the day, there are often players who come to the office asking where they're supposed to sit and if the lineup is on the lineup sheet, we can direct them.

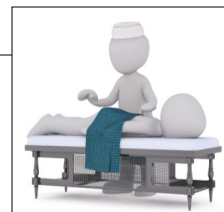
For subsequent segments, you need only notify each other of your lineups (10 minutes before the start of the segment for the Away team, 5 minutes for the Home team), although you are welcome to enter the lineup on the lineup sheet in case one of your players doesn't know where they are supposed to sit and comes to ask us.

Line-Up Procedures

For those of you who are interested, Ela has agreed to come to the Hyatt to provide massages any day that we have 3 or more people who want her. So if you want a massage, please let me know a day or two in advance, including what your timing is, and I'll try to make things work.

For now, Ela said she could come on April 30th for anyone who wants a post-flight, pre-tournament massage. So if you want one, please let me know and tell me what time(s) would work for you.

I think Ela still charges \$100 for an hour. She'll be setting her table up in my room (5117) and will have a key so she can get in and can the let you in when it's your turn. Any questions, let Jan know!



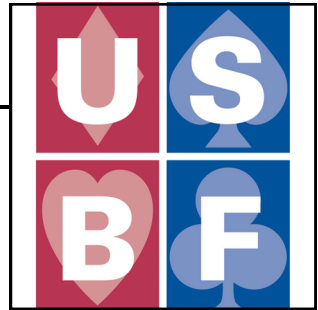
**Massage Therapist
message from Jan**

| | | | | | | | | |
|---|---|---|---|---|---|---|---|---|
| 1 | 6 | 7 | 8 | 9 | 4 | 2 | 3 | 5 |
| 9 | 4 | 5 | 7 | 3 | 2 | 1 | 8 | 6 |
| 8 | 3 | 2 | 6 | 5 | 1 | 7 | 9 | 4 |
| 7 | 2 | 8 | 4 | 1 | 5 | 9 | 6 | 3 |
| 4 | 5 | 9 | 3 | 7 | 6 | 8 | 1 | 2 |
| 6 | 1 | 3 | 2 | 8 | 9 | 5 | 4 | 7 |
| 5 | 8 | 4 | 9 | 2 | 3 | 6 | 7 | 1 |
| 3 | 7 | 1 | 5 | 6 | 8 | 4 | 2 | 9 |
| 2 | 9 | 6 | 1 | 4 | 7 | 3 | 5 | 8 |

| | | | | | | | | |
|---|---|---|---|---|---|---|---|---|
| 9 | 5 | 6 | 1 | 8 | 4 | 3 | 2 | 7 |
| 7 | 4 | 8 | 3 | 2 | 9 | 6 | 5 | 1 |
| 3 | 1 | 2 | 6 | 7 | 5 | 9 | 4 | 8 |
| 1 | 3 | 4 | 9 | 5 | 7 | 8 | 6 | 2 |
| 6 | 2 | 5 | 4 | 1 | 8 | 7 | 9 | 3 |
| 8 | 9 | 7 | 2 | 3 | 6 | 5 | 1 | 4 |
| 5 | 8 | 9 | 7 | 4 | 1 | 2 | 3 | 6 |
| 4 | 7 | 3 | 5 | 6 | 2 | 1 | 8 | 9 |
| 2 | 6 | 1 | 8 | 9 | 3 | 4 | 7 | 5 |

Sudoku Answers Puzzles on Page 7

Answer to Sudoku 1 Answer to Sudoku 2



USBF Supporting Membership

If you don't want to play in the USBF Championships that choose teams to represent the USA in the World Bridge Federation Championships, but do want to aid our events, a **Supporting Membership** can be the perfect way for you to be involved.

A Supporting Membership is \$25 for one year (\$75 for 3 years) and your donation will be used to cover inevitable expenses: attorney fees, accounting fees, website support services, tournament directors, insurance, WBF dues, and vugraph operators.

The USBF is an **all-volunteer** organization.

Our meetings are by conference call and at NABCS. Board members and the organization's officers are not compensated for meetings, travel, or hotel expenses.

Working at an unemployment office has to be a tense job...knowing if you get fired, you still have to come in the next day.

Answer to Logic Puzzle On Page 10

| | | | |
|------|--------|----------------|------------|
| 1960 | Wilma | \$18.5 million | Onawa |
| 1956 | Mabel | \$15.7 million | Tomales |
| 1952 | Olivia | \$16.9 million | Escondido |
| 1948 | Audrey | \$13.1 million | Alta Vista |
| 1944 | Freda | \$19.2 million | Hesperia |



I've never understood why I didn't consider cottage cheese to really be "cheese." But it's just a curd to me.

On Board 72 from Match 7 of the Monday Round Robin, Milgrim and Aker in Aker/Cappelli had an excellent auction to get to 6D. They were the only pair in the field to find slam.

BOARD: 72
DEALER: WEST
VULNERABLE: NONE

♠ K986
 ♥ Q853
 ♦ A82
 ♣ 74

♠ JT2
 ♥ K97
 ♦ KT53
 ♣ AK8

♠ AQ75
 ♥ Q976
 ♦ Q976
 ♣ QT965

♠ 43
 ♥ AJT642
 ♦ J4
 ♣ J32

Par: -920

| | | | | | |
|----|----|----|---|----|---|
| | ♣ | ♦ | ♥ | ♠ | N |
| NS | 2 | 1 | 7 | 3 | 2 |
| EW | 11 | 12 | 6 | 10 | 9 |

| Home team | Visiting team | Room | By | IMP |
|-----------|---------------|-------------------|-----|-----|
| Aker | Cappelli | Open 3N W ♠6 +2 | 460 | 10 |
| | | Closed 6♦ W ♥5 = | 920 | |
| Hamman | Wolfson | Open 3♥ S ♣A -2 | 100 | 2 |
| | | Closed 4♣ W ♥5 +1 | 150 | |
| Lall | Tulin | Open 3N W ♥3 = | 400 | 1 |
| | | Closed 5♣ E ♥A +1 | 420 | |
| Reynolds | Simson | Open 3N W ♥3 = | 400 | 8 |
| | | Closed 3♥ S ♠J -1 | 50 | |

It is interesting to look at the traveler on this board.

It's not often that we see a hand played at this level of competition in so many different strains and levels between 3H and 6D!

It was played at different tables at different levels in diamonds and hearts and clubs and no-trump!

Against 6D, Bitterman led the H5. Aker ruffed in dummy. Aker played the D9 and floated it. Bitterman ducked the ace.

Aker played the D7 to the J, K, A. Bitterman exited a diamond and Aker won in dummy with queen.

A small club went to the ace and the SJ was covered with the K and A.

Aker played a club off dummy to his king and claimed.

10 IMPs to Aker.

HOME CARDS SPLIT

| W | N | E | S |
|---------|----------|---------|---------|
| 1♣ PASS | 1♥ PASS | 1♠ PASS | 1♣ PASS |
| 1♦ PASS | 2♣ PASS | 2♠ PASS | 1♦ PASS |
| 2♦ PASS | 3♣ PASS | 3♠ PASS | 2♦ PASS |
| 3♦ PASS | 4NT PASS | 4♠ PASS | 3♦ PASS |
| 6♦ PASS | PASS | PASS | 6♦ PASS |

1C=2+
 1H=spades
 1S=2 or 3 spades
 2C=puppets 2D unless pard has unusual hand
 2D=forced
 3C=invite with longer clubs than spades
 3D asks

LoveBridge

♠ K986
 ♥ Q853
 ♦ A82
 ♣ 74

N Bob Bitterman

♠ AQ75
 ♥ Q976
 ♦ Q976
 ♣ QT965

E Glenn Milgrim

♠ JT2
 ♥ K97
 ♦ KT53
 ♣ AK8

W Jeff Aker

♠ 43
 ♥ AJT642
 ♦ J4
 ♣ J32

S Mark Bendure

WEST 6♦

DDS

BOARD: 69
DEALER: NORTH
VULNERABLE: N-S

♠ Q643
 ♥ AQJ87
 ♦ 2
 ♣ QJ8

♠ 2
 ♥ KT6
 ♦ JT87
 ♣ AT976

♠ KT975
 ♥ 95
 ♦ AK43
 ♣ 42

♠ AJ8
 ♥ 432
 ♦ Q965
 ♣ K53

Par: 400

| | | | | | |
|----|---|---|---|---|---|
| | ♣ | ♦ | ♥ | ♠ | N |
| NS | 7 | 5 | 9 | 8 | 9 |
| E | 6 | 7 | 3 | 4 | 3 |
| W | : | 8 | 4 | 5 | 4 |

Board 69 from Monday's Round Robin, Match 7, we come across the seldom seen score of 780!

In the Closed Room of Aker/Cappelli, South played in 1NT un-touched. The auction went 1H in first seat by North; 1S over-called by East; 1NT by South; all pass.

| Home team | Visiting team | Room | By | = | ★ | IMP | | |
|-----------|---------------|--------|-----|------|----|-----|------|----------|
| | | | | | NS | EW | Home | Visiting |
| Aker | Cappelli | Open | 1Nx | S ♣T | +3 | 780 | | |
| | | Closed | 1N | S ♣9 | +2 | 150 | | 12 |
| Hamman | Wolfson | Open | 3♦x | E ♥4 | -3 | 500 | | |
| | | Closed | 3♦ | E ♥2 | -2 | 100 | | 9 |
| Lall | Tulin | Open | 3♣ | W ♦2 | -3 | 150 | | |
| | | Closed | 3♥ | N ♦A | = | 140 | | - - |
| Reynolds | Simson | Open | 3♦ | E ♥2 | -2 | 100 | | |
| | | Closed | 3♦x | E ♥4 | -3 | 500 | | 9 |

As the frequency chart points out, there are 9 tricks for the taking and Bendure took them all.

Things were far different in the Open Room below:

Cappelli chose not to overcall 1S and passed. Falk bid 1NT and when it came back to Cappelli, he tried to catch up by doubling for takeout.

Aquino could have done as asked and bid 2C as a preference or 2NT to ask Cappelli to choose a minor.

Instead, Aquino passed for penalty and Falk declared 1NTX. Allan took one more trick than the frequency chart claims and made four creating a 12 IMP swing for Aker.

HOME CARDS SPLIT

W N E S

1♥ PASS 1NT

PASS PASS DBL PASS

PASS PASS

Table: OP 1, Round: 7

N-S: Aker 0 IMP

E-W: Cappelli 7 IMP

OTHER ROOM S 1N +2 150

Score card

Frequency

Live tables

DEALER WEST EAST SOUTH

69

♠ Q643
 ♥ AQJ87
 ♦ 2
 ♣ QJ8

N John Lusky

♠ 2
 ♥ KT6
 ♦ JT87
 ♣ AT976

W Mark Aquino

♠ KT975
 ♥ 95
 ♦ AK43
 ♣ 42

E Bob Cappelli

♠ AJ8
 ♥ 432
 ♦ Q965
 ♣ K53

S Allan Falk

SOUTH 1NT

From Mark Aquino of the Cappelli Team... A Letter to the Editor:
Subject: Chat GPT* Thought Cappelli Would Do a Lot Better

Suzi,
I thought it would be great if you could post this in tomorrow's Daily Bulletin!
Mark

In a land where bridges ruled the day,
A quirky contest came to play,
With cards in hand and minds so keen,
Cappelli and a shark unseen.

The odds were set, the stakes were high,
The bookies laughed, the crowds passed by,
"Last place for sure," the whispers spread,
"No chance," they said, "they're out of their head."

Cappelli smiled, the shark just grinned,
Their game began, the play was pinned,
With every trick, a twist of fate,
They left their foes to contemplate.

The sharks were sharp, Cappelli smooth,
Each hand they played began to soothe,
The doubters' cries, the scoffers' jeers,
Replaced by awe and hearty cheers.

Through hearts and spades, they danced with flair,
No one could guess, no one could dare,
That they would rise from underdogs,
To leave the field in mental fogs.

At the final hand, the room was tense,
A hush so thick, the suspense immense,
Cappelli played a master stroke,
The shark's fin flashed, the crowd awoke.

The scoreboard blinked, the numbers rolled,
From bottom rank to silver and gold,
Cappelli and his finned compadre,
Had tricked them all, had won the day.

Now legends in the bridge lore's pages,
Their names will echo through the ages,
Cappelli and the shark so sly,
The greatest pair, and here's why:

They played the game with cunning art,
With a human mind and a shark's brave heart,
From last to first, they swam the stream,
The bridge world never dreamed this dream.

**For anyone who might not know:*

ChatGPT is a free-to-use AI system. Use it for engaging conversations, gain insights, automate tasks, and witness the future of AI, all in one place.

**MOST PEOPLE THINK THAT
THE T-REX CAN'T CLAP BECAUSE
ITS ARMS ARE TOO SHORT.**

**BUT REALLY IT'S BECAUSE
THEY'RE ALL DEAD.**

**I Got Booted from the
Coffee Club because I
wore a Tea Shirt!**

**WHY COULDN'T
THE ASTRONAUT
LAND ON THE
MOON—BECAUSE
IT WAS FULL**

Dr. John Schwartz from Texas by way of Wisconsin pointed out a nice defensive play by Beatty and Stewart in the last round of the Round Robin on Monday against Billy Cohen and Ronnie Smith. (Goodman/Simson)

| | | | | NS | EW | Home | Visiting | | | |
|-----------------|-----------------|--|--------|----|----|------|----------|-----|----|---|
| Aker | Lall | | Open | 2♥ | E | ♦4 | -2 | 100 | | |
| | | | Closed | 2♥ | W | ♥8 | -1 | 50 | | 2 |
| Cappelli | Tulin | | Open | 2♥ | E | ♦4 | -1 | 50 | | |
| | | | Closed | 2♥ | W | ♦A | -1 | 50 | | - |
| Goodman | Simson | | Open | 2♠ | N | ♥A | -1 | | 50 | |
| | | | Closed | 2♥ | E | ♥T | -2 | 100 | | |
| Hamman | Reynolds | | Open | 2♥ | E | ♦4 | -1 | 50 | | |
| | | | Closed | 1N | N | ♥2 | -1 | | 50 | |

Beatty and Stewart were spot-on with the defense.

As Dr. John put it, "How many trump tricks are available on defense with T96 opposite QJ8, when the trump ten is led?"

Watch and you will see:

Beatty led the HT to Cohen's ace. Cohen played a small spade to dummy's king and a spade back to his ace. He ruffed the S8 with the five and Stewart overruffed with the jack!!

The screenshot shows a bridge game interface with the following elements:

- Score Card:**

| W | N | E | S |
|------|------|----|------|
| | 1NT | 2♣ | PASS |
| 2♦ | PASS | 2♥ | PASS |
| PASS | PASS | | |
- Hand Information:**
 - 2C=majors
 - 2D=YOU pick!
- Hand Lists:**
 - North (Fred Stewart):** ♠ QJ, ♥ QJ8, ♦ AKQ3, ♣ Q954
 - West (Ron Smith):** ♠ K6, ♥ 54, ♦ JT865, ♣ KT87
 - South (Steve Beatty):** ♠ T9543, ♥ T96, ♦ 42, ♣ AJ6
 - East (Billy Cohen):** ♠ A872, ♥ AK732, ♦ 97, ♣ 32
- Dealer:** WEST 97 EAST SOUTH
- Game Type:** DDS

Stewart cashed the DK and shifted to the C9 which Beatty won with the ace. Beatty cashed the ST and played a diamond to Stewart's ace. Stewart continued with his DQ, ruffed by Cohen with the deuce and overruffed by Beatty with the six.

The final blow came at trick 10 when Beatty played the 13th spade!! Dummy pitched a club and Stewart ruffed with his HQ, promoting Beatty's NINE while Cohen helplessly overruffed with the king and conceded down two!

Excellent defense by the Washington state guys!

It was a hand that looked trivial while sifting through the boards but it was really well defended and deserved mention. Thanks Dr. John for flagging it!

BOARD: 6
DEALER: EAST
VULNERABLE: E-W

♠ K875
♥ 765
♦ JT3
♣ Q52

♠ J
♥ QT98
♦ AQ876
♣ K76

♠ QT32
♥ KJ432
♦ K52
♣ J

♠ A964
♥ A
♦ 94
♣ AT9843

Par: -300

| | | | | | |
|----|---|---|----|---|---|
| | ♣ | ♦ | ♥ | ♠ | N |
| NS | 8 | 3 | 3 | 8 | 4 |
| EW | 4 | 9 | 10 | 5 | 6 |

| Home team | Visiting team | Room | By | NS | EW | Home | Visiting |
|-----------|---------------|--------|------------|-----|----|------|----------|
| Wolfson | Cappelli | Open | 4♥ E ♠6 = | 620 | | | 8 |
| | | Closed | 4♠ N ♥2 -6 | 300 | | | |
| Lall | Aker | Open | 4♥ W ♣2 = | 620 | | | 11 |
| | | Closed | 3♠ N ♦2 -1 | 50 | | | |
| Goodman | Hamman | Open | 4♥ W ♠7 = | 620 | | | 11 |
| | | Closed | 4♠ N ♦2 -2 | 100 | | | |
| Tulin | Simson | Open | 3♠ N ♦2 -1 | 50 | | | 11 |
| | | Closed | 4♥ W ♣2 = | 620 | | | |

What an interesting set of results on Board 6 in the first round of the Head-ups!

In every match, one East/West pair bid and made 4H while their teammates played in either 3 or 4 spades at the other table.

Three 11 IMP swings and one swing of 8.

The reason Team Cappelli scored 3 less IMPs than their counterparts is because their counterparts went light one or two while they failed by SIX! That's a big difference... even non-vul!

How did that happen?

Becker led the H2. Bitterman won in dummy and played the S4 to his king. He played the CQ to the ace. At this point, he was still going down only two...

And then... he needed to play the CT or its equivalent to stay the carnage at down 2. He could set up clubs and still have entries in spades to enjoy them.

As it was, he dropped four tricks with the next play!! He cashed the SA!!! It was over... He followed that with the CT... too little too late... Kamil won the king while Becker pitched a diamond. Kamil cashed the DA and played the DQ to Becker's king. Becker pulled trump and E/W was left with all good hearts!

Score card:

| | | | |
|------|------|------|----|
| W | N | E | S |
| 1♦ | 1♠ | DBL | 2♦ |
| 2♥ | PASS | 3♥ | 4♠ |
| PASS | PASS | PASS | |

Hand details:

- North: ♠ K875, ♥ 765, ♦ JT3, ♣ Q52 (Bob Bitterman)
- West: ♠ J, ♥ QT98, ♦ AQ876, ♣ K76 (Michael Kamil)
- East: ♠ QT32, ♥ KJ432, ♦ K52, ♣ J (Mike Becker)
- South: ♠ A964, ♥ A, ♦ 94, ♣ AT9843 (Mark Bendure)

Contract down SIX! 8 IMPs to Cappelli

BOARD: 8
DEALER: WEST
VULNERABLE: NONE

♠ J974
♥ 9
♦ 962
♣ AT852

♠ 82
♥ J642
♦ QJ8
♣ KQ63

♠ AKQT6
♥ AQ3
♦ AK73
♣ J

♠ 53
♥ KT875
♦ T54
♣ 974

Par: -990

| | | | | | |
|----|----|----|----|----|----|
| | ♣ | ♦ | ♥ | ♠ | N |
| NS | 3 | 1 | 3 | 1 | 1 |
| EW | 10 | 12 | 10 | 12 | 12 |

Only two pairs got to slam on Board 8 in the knockouts on Tuesday.

Bramley successfully declared it in Tulin/Simson from East while Smith failed in Goodman/Hamman from West.

| Home team | Visiting team | Room | By | = | IMP | | | |
|-----------|---------------|--------|----|---|-----|----|-----|----|
| | | | | | NS | EW | | |
| Wolfson | Cappelli | Open | 3N | W | ♣2 | +2 | 460 | 1 |
| | | Closed | 3N | W | ♣5 | +1 | 430 | |
| Lall | Aker | Open | 4♠ | E | ♣4 | +1 | 450 | - |
| | | Closed | 4♠ | E | ♥5 | +1 | 450 | |
| Goodman | Hamman | Open | 3N | W | ♣5 | +2 | 460 | 11 |
| | | Closed | 6♦ | W | ♦2 | -1 | 50 | |
| Tulin | Simson | Open | 3N | W | ♣5 | +1 | 430 | 10 |
| | | Closed | 6♦ | E | ♦5 | = | 920 | |

At both tables a small trump was led.

Bramley won the jack in dummy and led the C3. Stewart hopped with the ace and played a heart. Bramley won the ace and

cashed the SK. He extracted trump ending in dummy and cashed the club king and queen, shedding hearts from his hand. Success or failure rests firmly on the position of the SJ. Bramley led the S8. Stewart covered with the nine and Bramley finessed the ten, taking 12 tricks! Well done, Bart.

Smith, playing from the 3-card holding, won the trump lead in hand with the queen. He played a small club and Doub took the ace. Doub played the H9. Ronnie won dummy's ace. He played a diamond to his jack and cashed two high clubs throwing hearts from dummy. He played a diamond to the king and was dummy-locked!!!

He cashed the SA creating this wish trick:



He continued with the king and queen of spades, and when Wildavsky discarded a heart on the SQ, Smith had to concede down one.

10 IMPs for Tulin
11 IMPs for Hamman

BOARD: 18
DEALER: EAST
VULNERABLE: N-S

♠ 96
♥ T8652
♦ J85
♣ J86

♠ J753
♥ AK4
♦ KT6
♣ QT5

♠ KT82
♥ J9
♦ A743
♣ A43

Par: -140

| | | | | | |
|----|---|---|---|---|---|
| | ♣ | ♦ | ♥ | ♠ | N |
| NS | 5 | 4 | 6 | 4 | 4 |
| E | 8 | 9 | 7 | 9 | 8 |
| W | 7 | 8 | : | : | : |

♠ AQ4
♥ Q73
♦ Q92
♣ K972

Home team Visiting team Room By = IMP

4S was played at all but two tables on Board 18.

Everyone in 4S went down one trick losing the offside SAQ and two minor suit tricks.

Two pairs played in 3NT. 3NT can be defeated on the opening lead of a club from North but it's unrealistic to think that will really be the lead.

| Home team | Visiting team | Room | By | = | NS | EW | Home | Visiting |
|-----------|---------------|--------|----|---|----|----|------|----------|
| Wolfson | Cappelli | Open | 4♠ | W | ♠6 | -1 | 50 | - |
| | | Closed | 4♠ | W | ♣6 | -1 | 50 | - |
| Lall | Aker | Open | 4♠ | W | ♥6 | -1 | 50 | - |
| | | Closed | 4♠ | W | ♣6 | -1 | 50 | - |
| Goodman | Hamman | Open | 4♠ | W | ♣6 | -1 | 50 | - |
| | | Closed | 3N | W | ♥5 | -1 | 50 | - |
| Tulin | Simson | Open | 3N | W | ♥5 | = | 400 | 10 |
| | | Closed | 4♠ | W | ♥2 | -1 | 50 | - |

Indeed, at both tables where 3NT was the contract of choice, a small heart was led.

oveBridge

♠ 96
♥ T8652
♦ J85
♣ J86

N Neil Chambers

♠ J753
♥ AK4
♦ KT6
♣ QT5

W Mike Passell

♠ KT82
♥ J9
♦ A743
♣ A43

E Andy Goodman

♠ AQ4
♥ Q73
♦ Q92
♣ K972

WEST
S Bob Hamman
3NT

In Goodman/Hamman, Chambers led the H5. Passell's play is key. If he plays the 9, he can collect nine tricks. If he plays the jack, 4S goes down. Mike played the jack! He won the queen with the king and played a spade to the ten losing to South's queen. Hamman played a heart to Chambers's ten. Chambers continued hearts. Passell won his ace, played a spade to the king and Hamman's ace. Hamman played the S4, Passell winning his jack. The S7 went to the 8 and the DA was cashed. A diamond went to the king and a third diamond brought down the queen and the jack. Hamman exited a club to dummy's ace and took the setting trick with the CK! Push board when 4S went down at the other table.

oveBridge

♠ 96
♥ T8652
♦ J85
♣ J86

N Alan Sontag

♠ J753
♥ AK4
♦ KT6
♣ QT5

W Curtis Cheek

♠ KT82
♥ J9
♦ A743
♣ A43

E Doug Simson

♠ AQ4
♥ Q73
♦ Q92
♣ K972

WEST
S Ralph Katz
3NT

In Tulin/Simson, Sontag also led the H5. Cheek inserted the H9 at trick one and he was cold. He won the HQ with the king & played a spade to the ten and Katz's queen. A heart rode to the jack and the SK was played to Katz's ace. Katz played the H3, Curtis winning his ace.

The SJ and S8 were cashed. The C3 went to the queen and Curtis claimed nine tricks! He was the ONLY successful declarer in the quarterfinals on this hand! 10 IMPs to Simson

BOARD: 36
 DEALER: WEST
 VULNERABLE: ALL

♠ KQT
 ♥ 975432
 ♦ AJT
 ♣ 3

♠ 98543
 ♥ QJ
 ♦ 98643
 ♣ Q

♠ AJ
 ♥ 6
 ♦ 75
 ♣ AJ987542

Par: 630

| | | | | | |
|----|---|---|---|---|----|
| | ♣ | ♦ | ♥ | ♠ | N |
| NS | 5 | 9 | 9 | 9 | 10 |
| EW | 8 | 4 | 2 | 4 | 2 |

♠ 762
 ♥ AKT8
 ♦ KQ2
 ♣ KT6

| Home team | | Visiting team | | Room | By | = | ★ | | IMP | |
|-----------|----------|---------------|--------|------|----|----|----|-----|------|----------|
| | | | | | | | NS | EW | Home | Visiting |
| Wolfson | Cappelli | ▶ | Open | 4♥ | N | ♣A | +1 | 650 | - | - |
| | | ▶ | Closed | 4♥ | N | ♣A | +1 | 650 | | |
| Lall | Aker | ▶ | Open | 4♥ | N | ♣A | +1 | 650 | | 1 |
| | | ▶ | Closed | 4♥ | N | ♣A | = | 620 | | |
| Goodman | Hamman | ▶ | Open | 4♥ | N | ♣A | +1 | 650 | | 10 |
| | | ▶ | Closed | 4♣ | E | ♥A | -2 | 200 | | |
| Tulin | Simson | ▶ | Open | 4♥ | N | ♣A | +1 | 650 | | 13 |
| | | ▶ | Closed | 4♥ | S | ♣Q | -1 | 100 | | |

Clearly NT is the place to be on Board 36. There are simply ten tricks for the taking. No one, however, found that strain. 4H, the overwhelmingly favorite contract, should be set before declarer even gains the reins. The one-off was in the Closed Room of Goodman/Hamman, when Billy Cohen opened 4C was allowed to play it there. Unlike others, Neil Silverman chose to pass instead of doubling on the South cards. Cohen went down two for a 10 IMP pickup for Goodman when 4H made 5 in the other room.

Only in the Closed room of Tulin/Simson was 4H defeated. That room was also the only place where 4H was played from South. Katz led his singleton CQ. Sontag won his ace. Alan gave Katz a club ruff. Katz played a spade to Sontag's ace, got a second ruff and it was over.

It is interesting that in every other match, West led the CA drawing the queen from partner and didn't then give partner his ruffs. Certainly partner could and did hold the HQJ. Every player shifted at trick 2 and the contract came home. It must be easier to try for the ruffs not looking at the HAK in dummy.

13 IMPs to Tulin