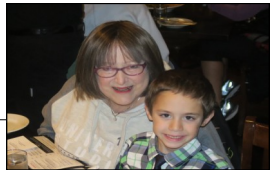


Volume 17, Issue 3
May 2, 2023

Results:

1	Nickell	0																	
16	BYE	0																	
2	Lebowitz	0																	
15	BYE	0																	
3	Fleisher	207	36	47	72	52													
14	Baseggio	50	11	8	17	14													
4	Rosenthal	209	31	70	63	45													
13	Dinkin	92	20	18	26	28													
5	Bramley	113	35	21	32	25													
12	Schireson	95	43	16	23	13													
6	Levine	139	19	44	48	37													-9
11	Amer	72	35	21	14	2													
7	Juster	127.4	22	44	45	16.4													
10	Simson	152	44	59	25	24													
8	Goodman	98	48	18	10	22													
9	Gu	153.7	10	50	55.7	38													

Ed. Note: With delayed broadcasting, it is especially challenging to watch every hand for write ups. If anyone has a hand of particular interest, please send me the board number & match and I will review it. Email to stansubeck@prodigy.net. Thank you. Suzi



- USBF President**
Aaron Silverstein
- USBF Vice President**
Lynn Baker
- USBF COO & Secretary**
Jan Martel
- USBF CFO & Treasurer**
Stan Subeck
- USBF Recorder**
Jack Oest
- Chief Communications Officer**
Suzi Subeck
- Directors**
McKenzie Myers, DIC
Ken Horwedel
Chris Wiegand
- Tournament Organizer**
Jan Martel
- Software Expert**
Al Hollander
- VuGraph Organizers**
Jan Martel
Chris Wiegand
- Appeals Administrator**
Suzi Subeck, Chairman
- Appeals Panel:**
David Berkowitz
Dana Berkowitz
Gary Cohler
Rich DeMartino
Marty Fleisher
Ron Gerard
Marty Hirschman
George Jacobs
Ralph Katz
Chip Martel
Kerri Sanborn
Danny Sprung
Stan Subeck
Adam Wildavsky
- Bulletin Editor**
Suzi Subeck
- Hospitality**
Maya Alela
Marie-France Benoit

UNITED STATES BRIDGE CHAMPIONSHIPS

“Trials” and Tribulations

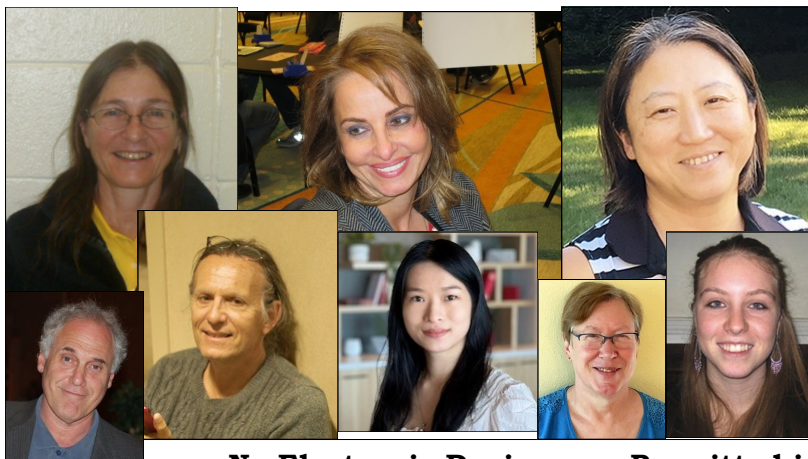
Open Teams Entered

Nickell Bye to R16	Nick Nickell Eric Greco Bobby Levin Jill Levin, NPC	Ralph Katz Geoff Hampson Steve Weinstein
Lebowitz Bye to R16	Larry Lebowitz, Capt Zach Grossack David Grainger	Adam Grossack Michael Rosenberg Joel Wooldridge
Amer	Julie Arbit, Capt Christian Jolly	Anam Tebha Owen Lien
Baseggio	Franco Baseggio, Capt Amber Lin	Jeff Ferro Drew Hoskins
Bramley	Bart Bramley, Capt Kevin Rosenberg	Kit Woolsey Brian Platnick
Dinkin	Sam Dinkin, Capt Ron Smith Tom Breur	Michael Shuster Ethan Wood
Fleisher	Marty Fleisher, Capt Joe Grue Zia Mahmood	Brad Moss Jeff Meckstroth Chip Martel
Goodman	Andy Goodman, Capt Drew Casen Venkatrao Koneru	Mike Passell Jim Krekorian Pratap Rajadhyaksha
Gu	Jiang Gu, Capt Ai-Tai Lo Chris Compton	Walter Lee Alex Kolesnik Adam Wildavsky
Juster	Jacob Morgan, Capt John Schermer Bob Hamman	Jeff Juster Neil Chambers Peter Weichsel
Levine	Mike Levine Daniel Korbel Kevin Dwyer Bob Morris, NPC	Eddie Wold Roger Lee Shan Huang
Rosenthal	Andrew Rosenthal, Capt Chris Willenken Finn Kolesnik	Aaron Silverstein Eldad Ginossar Ish DelMonte
Schireson	Max Schireson, Capt John McAllister	Debbie Rosenberg Will Watson
Simson	Doug Simson, Capt Billy Cohen	Jeff Aker Gary Cohler



Mixed Teams Entered

Cappelletti	Allison Cappelletti, Capt Joanne Weingold Raluca Dobrescu	Mike Cappelletti Gary Cohler Radu Nistor
Dinkin	Sam Dinkin, Capt Ron Smith Tracey Bauer	Olivia Schireson Yoko Sobel Billy Cohen
Henner	Christal Henner, Capt Sheila Gabay Irina Kislitsyna	Uday Ivatury Allan Graves Jeff Ferro
Kaplan	Adam Kaplan, Capt Finn Kolesnik Sheri Winestock	Dana Berkowitz Emma Kolesnik Brad Moss
Lewis	Paul Lewis, Capt Mark Itabashi Linda Lewis	Janice Molson Disa Eythorsdottir Daniel Korbel
Millens	Shan Huang, Capt Kevin Dwyer Jenny Wolpert	Joan Millens Sandra Rimstedt
Parker	Chris Parker, Capt Anam Tebha Giorgia Botta	Stewart Rubenstein Adam Grossack Zach Grossack
Pollack	Bill Pollack, Capt Cheri Bjerkan Dave Caprera	Rozanne Pollack Larry Robbins Anne Brenner
Rosenthal	Andrew Rosenthal, Capt Chris Willenken Michael Rosenberg	Migry Campanile Amber Lin Debbie Rosenberg
Wildavsky	Adam Wildavsky, Capt Yiji Brennan May Sakr	Kitty Cooper Doug Doub Jacek Pszczola



No Electronic Devices are Permitted in the Playing Area.

This applies to players AND kibitzers.

Severe penalties will be assessed for violation of this rule.

Please turn off all cell phones and check them at the door.

The USBF reserves the right to wand anyone entering the playing field.



Senior Teams Entered

Beatty	Steve Beatty, Capt Jeff Aker Dennis Clerkin	Fred Stewart Doug Simson Jerry Clerkin
Cappelli	Bob Cappelli, Capt Ken Kranyak Mark Aquino	Bob Bitterman Phil Becker Jon Green
Goodman	Andy Goodman, Capt Drew Casen Venkatrao Koneru	Mike Passell Jim Krekorian Pratap Rajadhyaksha
Hamman	Bob Hamman Neil Chambers Mitch Dunitz, Capt	Peter Weichsel John Schermer Ross Grabel
Lall	Hemant Lall, Capt Bart Bramley Eddie Wold	Reese Milner Kit Woolsey Marc Jacobus
Lewis	Paul Lewis, Capt Mark Itabashi Doug Doub	Linda Lewis Neil Silverman Adam Wildavsky
Lusky	John Lusky, Capt Jim Foster Jeff Roman	Allan Falk Mark Jones Robbie Hopkins
Reynolds	Tom Reynolds, Capt Bill Hall George Jacobs	Lance Kerr Joe Viola Craig Gardner
Wolfson	Jeff Wolfson, Capt David Berkowitz Jeff Meckstroth	Steve Garner Michael Rosenberg Zia Mahmood



Women's Teams Entered

Baker	Lynn Baker, Capt Kerri Sanborn Janice Molson [alternate] Jill Meyers	Karen McCallum Sandra Rimstedt Disa Eythorsdottir
Cappelletti	Allison Cappelletti, Capt Gigi Simpson	Joanne Weingold Kristen Onsgard
Cole	Margie Cole, Capt	Giorgia Botta
Wittes	Pam Wittes, Capt Cheri Bjerkan Lisa Berkowitz	Ljudmila Kamenova Rozanne Pollack Connie Goldberg



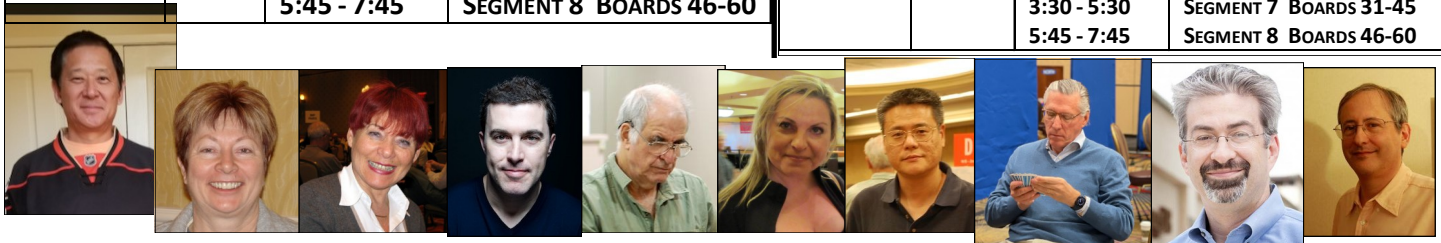
Open Team (USA2) Tournament Schedule

Please note the early starting time day one, 5/1

DAY	DATE	TIME (CDT)	BOARDS
ROUND OF 16			
MONDAY	MAY 1	11:00 - 1:15	SEGMENT 1 BOARDS 1-15
		1:30 - 3:45	SEGMENT 2 BOARDS 16-30
		75 MINUTE LUNCH BREAK	
		5:00 - 7:00	SEGMENT 3 BOARDS 31-45
		7:15 - 9:15	SEGMENT 4 BOARDS 46-60
TUESDAY	MAY 2	10:00 - 12:00	SEGMENT 5 BOARDS 1-15
		12:15 - 2:15	SEGMENT 6 BOARDS 16-30
		3:30 - 5:30	SEGMENT 7 BOARDS 31-45
		5:45 - 7:45	SEGMENT 8 BOARDS 46-60
QUARTERFINAL			
WEDNESDAY	MAY 3	10:00 - 12:00	SEGMENT 1 BOARDS 1-15
		12:15 - 2:15	SEGMENT 2 BOARDS 16-30
		3:30 - 5:30	SEGMENT 3 BOARDS 31-45
		75 MINUTE LUNCH BREAK	
		5:45 - 7:45	SEGMENT 4 BOARDS 46-60
THURSDAY	MAY 4	10:00 - 12:00	SEGMENT 5 BOARDS 1-15
		12:15 - 2:15	SEGMENT 6 BOARDS 16-30
		3:30 - 5:30	SEGMENT 7 BOARDS 31-45
		75 MINUTE LUNCH BREAK	
		5:45 - 7:45	SEGMENT 8 BOARDS 46-60
SEMIFINAL			
FRIDAY	MAY 5	10:00 - 12:00	SEGMENT 1 BOARDS 1-15
		12:15 - 2:15	SEGMENT 2 BOARDS 16-30
		3:30 - 5:30	SEGMENT 3 BOARDS 31-45
		75 MINUTE BREAK	
		5:45 - 7:45	SEGMENT 4 BOARDS 46-60
SATURDAY	MAY 6	10:00 - 12:00	SEGMENT 5 BOARDS 1-15
		12:15 - 2:15	SEGMENT 6 BOARDS 16-30
		3:30 - 5:30	SEGMENT 7 BOARDS 31-45
		75 MINUTE BREAK	
		5:45 - 7:45	SEGMENT 8 BOARDS 46-60
FINAL			
SUNDAY	MAY 7	10:00 - 12:00	SEGMENT 1 BOARDS 1-15
		12:15 - 2:15	SEGMENT 2 BOARDS 16-30
		3:30 - 5:30	SEGMENT 3 BOARDS 31-45
		75 MINUTE BREAK	
		5:45 - 7:45	SEGMENT 4 BOARDS 46-60
MONDAY	MAY 8	10:00 - 12:00	SEGMENT 5 BOARDS 1-15
		12:15 - 2:15	SEGMENT 6 BOARDS 16-30
		3:30 - 5:30	SEGMENT 7 BOARDS 31-45
		75 MINUTE BREAK	
		5:45 - 7:45	SEGMENT 8 BOARDS 46-60

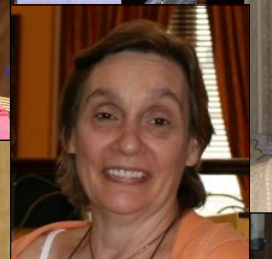
Mixed Team Tournament Schedule

ROUND ROBIN			
DAY	DATE	TIME	BOARDS
WEDNESDAY	MAY 10	10:00 - 11:30	MATCH 1 - BOARDS 1-10
		11:45 - 1:15	MATCH 2 - BOARDS 11-20
		2:30 - 3:45	75 MINUTE LUNCH BREAK
		4:00 - 5:15	MATCH 3 - BOARDS 21-30
			MATCH 4 - BOARDS 31-40
THURSDAY	MAY 11	10:00 - 11:15	MATCH 5 - BOARDS 41-50
		11:30 - 12:45	MATCH 6 - BOARDS 51-60
		2:00 - 3:15	75 MINUTE LUNCH BREAK
		3:30 - 4:45	MATCH 7 - BOARDS 61-70
		5:00 - 6:15	MATCH 8 - BOARDS 71-80
			MATCH 9 - BOARDS 81-90
USA1 SEMIFINAL & USA2 STAGE 1			
FRIDAY	MAY 12	10:00 - 12:00	SEGMENT 1 BOARDS 1-15
		12:15 - 2:15	SEGMENT 2 BOARDS 16-30
		3:30 - 5:30	75 MINUTE BREAK
		5:45 - 7:45	SEGMENT 3 BOARDS 31-45
			SEGMENT 4 BOARDS 46-60
SATURDAY	MAY 13	10:00 - 12:00	SEGMENT 5 BOARDS 1-15
		12:15 - 2:15	SEGMENT 6 BOARDS 16-30
		3:30 - 5:30	75 MINUTE BREAK
		5:45 - 7:45	SEGMENT 7 BOARDS 31-45
			SEGMENT 8 BOARDS 46-60
USA1 FINAL & USA2 QUARTERFINAL			
SUNDAY	MAY 14	10:00 - 12:00	SEGMENT 1 BOARDS 1-15
		12:15 - 2:15	SEGMENT 2 BOARDS 16-30
		3:30 - 5:30	75 MINUTE BREAK
		5:45 - 7:45	SEGMENT 3 BOARDS 31-45
			SEGMENT 4 BOARDS 46-60
MONDAY	MAY 15	10:00 - 12:00	SEGMENT 5 BOARDS 1-15
		12:15 - 2:15	SEGMENT 6 BOARDS 16-30
			75 MINUTE BREAK
USA1 FINAL & USA2 SEMIFINAL			
MONDAY	MAY 15	3:30 - 5:30	USA1 SEGMENT 7 BOARDS 31-45
		5:45 - 7:45	USA2 SEGMENT 1 BOARDS 1-15
			USA1 SEGMENT 8 BOARDS 46-60
			USA2 SEGMENT 2 BOARDS 16-30
USA2 SEMI FINAL			
TUESDAY	MAY 16	10:00 - 12:00	SEGMENT 3 BOARDS 31-45
		12:15 - 2:15	SEGMENT 4 BOARDS 46-60
		3:30 - 5:30	75 MINUTE BREAK
		5:45 - 7:45	SEGMENT 5 BOARDS 61-75
			SEGMENT 6 BOARDS 76-90
USA2 FINAL			
WEDNESDAY	MAY 17	10:00 - 12:00	SEGMENT 1 BOARDS 1-15
		12:15 - 2:15	SEGMENT 2 BOARDS 16-30
		3:30 - 5:30	75 MINUTE BREAK
		5:45 - 7:45	SEGMENT 3 BOARDS 31-45
			SEGMENT 4 BOARDS 46-60
THURSDAY	MAY 18	10:00 - 12:00	SEGMENT 5 BOARDS 1-15
		12:15 - 2:15	SEGMENT 6 BOARDS 16-30
		3:30 - 5:30	75 MINUTE BREAK
		5:45 - 7:45	SEGMENT 7 BOARDS 31-45
			SEGMENT 8 BOARDS 46-60



Senior Team Tournament Schedule

ROUND ROBIN (EACH TEAM SITS OUT ONE MATCH)			
DAY	DATE	TIME	BOARDS
FRIDAY	MAY 19	10:00 - 11:30	MATCH 1 - BOARDS 1-10
		11:45 - 1:15	MATCH 2 - BOARDS 11-20 75 MINUTE LUNCH BREAK
		2:30 - 3:45	MATCH 3 - BOARDS 21-30
		4:00 - 5:15	MATCH 4 - BOARDS 31-40
SATURDAY	MAY 20	10:00 - 11:15	MATCH 5 - BOARDS 41-50
		11:30 - 12:45	MATCH 6 - BOARDS 51-60 75 MINUTE LUNCH BREAK
		2:00 - 3:15	MATCH 7 - BOARDS 61-70
		3:30 - 4:45	MATCH 8 - BOARDS 71-80
		5:00 - 6:15	MATCH 9 - BOARDS 81-90
USA1 SEMIFINAL & USA2 STAGE 1			
SUNDAY	MAY 21	10:00 - 12:00	SEGMENT 1 BOARDS 1-15
		12:15 - 2:15	SEGMENT 2 BOARDS 16-30 75 MINUTE BREAK
		3:30 - 5:30	SEGMENT 3 BOARDS 31-45
		5:45 - 7:45	SEGMENT 4 BOARDS 46-60
MONDAY	MAY 22	10:00 - 12:00	SEGMENT 5 BOARDS 1-15
		12:15 - 2:15	SEGMENT 6 BOARDS 16-30 75 MINUTE BREAK
		3:30 - 5:30	SEGMENT 7 BOARDS 31-45
		5:45 - 7:45	SEGMENT 8 BOARDS 46-60
USA1 FINAL & USA2 QUARTERFINAL			
TUESDAY	MAY 23	10:00 - 12:00	SEGMENT 1 BOARDS 1-15
		12:15 - 2:15	SEGMENT 2 BOARDS 16-30 75 MINUTE BREAK
		3:30 - 5:30	SEGMENT 3 BOARDS 31-45
		5:45 - 7:45	SEGMENT 4 BOARDS 46-60
WEDNESDAY	MAY 24	10:00 - 12:00	SEGMENT 5 BOARDS 1-15
		12:15 - 2:15	SEGMENT 6 BOARDS 16-30 75 MINUTE BREAK
USA1 FINAL & USA2 SEMIFINAL			
WEDNESDAY	MAY 24	3:30 - 5:30	USA1 SEGMENT 7 BOARDS 31-45
		5:45 - 7:45	USA2 SEGMENT 1 BOARDS 1-15 USA1 SEGMENT 8 BOARDS 46-60 USA2 SEGMENT 2 BOARDS 16-30
USA2 SEMI FINAL			
THURSDAY	MAY 25	10:00 - 12:00	SEGMENT 3 BOARDS 31-45
		12:15 - 2:15	SEGMENT 4 BOARDS 46-60 75 MINUTE BREAK
		3:30 - 5:30	SEGMENT 5 BOARDS 61-75
		5:45 - 7:45	SEGMENT 6 BOARDS 76-90
USA2 FINAL			
FRIDAY	MAY 26	10:00 - 12:00	SEGMENT 1 BOARDS 1-15
		12:15 - 2:15	SEGMENT 2 BOARDS 16-30 75 MINUTE BREAK
		3:30 - 5:30	SEGMENT 3 BOARDS 31-45
		5:45 - 7:45	SEGMENT 4 BOARDS 46-60
SATURDAY	MAY 27	10:00 - 12:00	SEGMENT 5 BOARDS 1-15
		12:15 - 2:15	SEGMENT 6 BOARDS 16-30 75 MINUTE BREAK
		3:30 - 5:30	SEGMENT 7 BOARDS 31-45
		5:45 - 7:45	SEGMENT 8 BOARDS 46-60



Beth Palmer Women's Schedule

USA1 SEMIFINAL					
SATURDAY	MAY 20	10:00 - 12:00 12:15 - 2:15	SEGMENT 1 BOARDS 1-15 SEGMENT 2 BOARDS 16-30 75 MINUTE BREAK		
		3:30 - 5:30 5:45 - 7:45	SEGMENT 3 BOARDS 31-45 SEGMENT 4 BOARDS 46-60		
SUNDAY	MAY 21	10:00 - 12:00 12:15 - 2:15	SEGMENT 5 BOARDS 1-15 SEGMENT 6 BOARDS 16-30 75 MINUTE BREAK		
		3:30 - 5:30 5:45 - 7:45	SEGMENT 7 BOARDS 31-45 SEGMENT 8 BOARDS 46-60		
USA1 FINAL & USA2 SEMIFINAL					
MONDAY	MAY 22	10:00 - 12:00 12:15 - 2:15	SEGMENT 1 BOARDS 1-15 SEGMENT 2 BOARDS 16-30 75 MINUTE BREAK		
		3:30 - 5:30 5:45 - 7:45	SEGMENT 3 BOARDS 31-45 SEGMENT 4 BOARDS 46-60		
		TUESDAY	MAY 23	10:00 - 12:00 12:15 - 2:15	SEGMENT 5 BOARDS 1-15 SEGMENT 6 BOARDS 16-30 75 MINUTE BREAK
				3:30 - 5:30 5:45 - 7:45	SEGMENT 7 BOARDS 31-45 SEGMENT 8 BOARDS 46-60
USA2 FINAL					
WEDNESDAY	MAY 24	10:00 - 12:00 12:15 - 2:15	SEGMENT 1 BOARDS 1-15 SEGMENT 2 BOARDS 16-30 75 MINUTE BREAK		
		3:30 - 5:30 5:45 - 7:45	SEGMENT 3 BOARDS 31-45 SEGMENT 4 BOARDS 46-60		
		THURSDAY	MAY 25	10:00 - 12:00 12:15 - 2:15	SEGMENT 5 BOARDS 1-15 SEGMENT 6 BOARDS 16-30 75 MINUTE BREAK
				3:30 - 5:30 5:45 - 7:45	SEGMENT 7 BOARDS 31-45 SEGMENT 8 BOARDS 46-60

Kibitzing: THERE WILL BE DEFERRED KIBITZING FOR ALL OF THE 2023 USBCs ON LOVEBRIDGE

You can follow the USBC on the <https://vugraph.lovebridge.com/> website. When available, voice commentary may be accessed by clicking on the TV screen icon. If there is no sound, you must unmute.

KIBITZING SCHEDULE (EDT)

Day One... Note later starting time:

Segment 1: 12:30 pm

Segment 2: 3:00 pm

Segment 3: 6:30 pm

Segment 4: 8:45 pm

For all other days of the Open USBC, kibitzing times will be :

Segment 1: 11:30 am

Segment 2: 1:45 pm

BREAK

Segment 3: 5:00 pm

Segment 4: 7:15 pm

Nail biting!

Do you want to be deeply involved? Choose the “Match view” at the starting page of your event. Your screen will be divided into four small screens – two of them showing the two tables of the match you choose, the other two having the scoresheet for your match and the current scores of the other matches. In the 2x2 view you can also personalize the content in all your windows. (The 2x2 view is not available on mobiles.)

Think together!

When watching a table, click on a name and choose “Kibitz”. Instead of seeing all 4 hands, you will see what the player sees, and you can decide what you would do and see whether your chosen player agrees.

More Information:

Be well informed and tell your friends: while following the play, you can click many items. The image of the sticker with the number of the board (upper right) takes you to the results of the board, in the bottom right corner the arrow takes you to the scoresheet, DDS shows the double dummy analyses, beside that there is a button for the other table of the same match, at the top left corner you can see the bidding with alerts and the explanations (mouse over), the tricks already played, and the double dummy analysis for the available number of tricks with the par score.

Navigation icons:

While surfing here and there in the vugraph, or amongst the archive sessions, there are icons to help you. You can go back to the main page with the “house” or to the standings with the “scores”. If you cannot see the icons, move your mouse, or touch your screen and they pop up immediately. There is also a built-in back button because the back button of your browser will always take you to the starting page. If this is not what you wanted, push next in your browser and you can continue where you were.

Replay:

After the event you can find every board from every table easily. While replaying the hands, the only surprise can be the way “next board” button works. If you have arrived from a scoresheet, it navigates through the scoresheet. If you have arrived from a screen where the results were shown for a given board, the same buttons move you through the list. Push every button and enjoy!



I kibitz day.
I kibitz night.
I try to get
The bidding right.

I watch the experts
Till they're through.
I try to guess
What they will do!



Kibitzing...

VACCINATION REQUIRED:
All players in the 2023 USBC's MUST be vaccinated against CoVid19.
Players must submit proof of vaccination to the USBF Secretary (Jan Martel) before play commences in the event.

2023 USBCs Hospitality

Although the Covid situation has improved, it is still out there. To keep our players and staff safe, we want to keep the number of people in the suite to a minimum at any one time. Our wonderful hostesses, Maya Alela and Marie-France Benoit will host you in our usual suite (Room 2321). Grab and go breakfast and lunch each day, except that on the first Monday and Tuesday, when lunch will be available in the Copper, Sage, and Maize meeting rooms off the corridor running from the hotel's front door to the back door.

Breakfast: From 8-10 am. There will be individually packaged cereal, fruit, hard boiled eggs, bagels, with some hot options. There will be individual butter, jam, peanut butter, and cream cheese, as well as condiment packages. Maya & Marie-France will be making coffee and will have individual packages of sugar, sweetener, and dairy & non-dairy creamers. For those of you who prefer Keurig coffee, that will also be available. We ask that you come to the suite, pick up a large to go container and put the smaller packages in that container to take with you. Then, as quickly as you can, go someplace else to eat.

Masks that cover your nose & mouth must be worn in the Hospitality Suite at all times. There will be a hand sanitizer station near the door and we encourage you to sanitize your hands before selecting your food.

Lunch: Monday, from 2:30-5:00 and Tuesday 1:30-4:00 ... Lunch in the Copper, Sage and Maize meeting rooms... salads, desserts, and main courses from local eateries.

From Wednesday on, lunch will be available in the hospitality suite from 2-4 pm (the first half of play each day ends at 2:35; we encourage those of you who are sitting out the 2nd quarter to go early). There will be a main dish (sandwiches, chicken, main dish salads, pizza) as well as tuna salad, green salad, cheese, fruit, and berries. Also all the individual packages of add-ons we have for breakfast. Water and soft drinks will be available in refrigerators.

And More on Hospitality and Regulations...

Let us know what you want: If you have specific needs or prohibitions (allergies?), please let Maya or Marie-France know and they will do their very best to provide food that meets your needs.

Playing Rooms & Player's Break Room

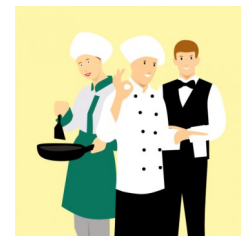
We will have bottled water in the playing rooms and if there is a refrigerator in a playing room we'll stock it with soft drinks.

We will also have bottled water in the Player's Break Room (1321), as well as soft drinks, Nespresso, some packaged snacks, and some fruit. We are working in that room and would appreciate it if you try to keep voices low.

Masks will be required in playing rooms only if your screenmate asks you to wear one. You do not have to put on a mask when you summon a director or ask someone to bring you coffee or water or escort you outside to smoke.



Marie-France



Hard Sudoku

4						5	7
	5		3			9	4
	1	3	4			8	
8				7	6		3
3	4	9					
9						7	
5				8			
	7	6		5			

Sudoku 1

Sudoku 2

					3	9	8	
5								
	4						7	2
	7	6			3		9	
				7				
8	3	4						7
3		9			8	5		
6					9		2	4
		5						

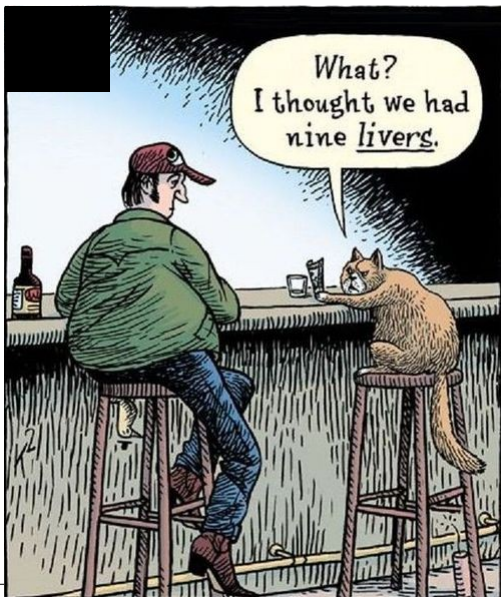
Sudoku Solutions on Page 15

Old shoppers never die... they just sale away!

You should keep a Mexican restaurant on speed dial in queso emergency!

Tried making a flash drive out of a tree. It didn't work... all bark, no byte!

Perhaps Hollywood should create a remake of Wizard of Oz from the dog's standpoint... they could call it "Toto Recall!"



Puzzle Page ...

Treasure Island

Find and circle all of the words and names from the book Treasure Island.
The remaining 46 letters spell a secret message.

M U S K E T T E L L O M S N I A T P A C T
T H E B L A C K S P O T R N E M A E S S L
E A S C U R C O S S N O N N A C L E Q I T
C I S S A H R E V I A T S A O C O U A O L
A I A C E N T E L E A L N D A W I S R A R
B S S S H A N F V B D W G S R R N R B I E
I R T S R O N O E L M M H Y E T A E U K T
N A T I E I O N N E I O U T P P P R C O S
B E P N A A G N N B R S R T A S S U C O A
O L S T L U F O E E A E N P I B I S A B M
Y H P N N O T A D R L L P H S N H A N G R
Y A R N I E T R R A B L L E O O Y E E O E
C N B C L K L S W I E E N S R J T R E L T
I D S E U I W N I B N O S H I P G T R L R
O S K S V T E A A P B G M A R O O N E D A
W S L E A Y L R H Y O S U R L A W U O I U
S E S A E P R A L M W G U I N E A S S L Q
T E R P N E M L S E I R E G O R Y L L O J
Y V A C L D I O E S N J G O D K C A L B N
H C A E B B S O C N N B U R I E D G O L D

ADMIRAL BENBOW INN
APPLE BARREL
ASHORE
BEACH
BEN GUNN
BILLY BONES
BLACK DOG
BUCCANEER
BURIED GOLD
CABIN BOY
CANNON BALLS
CANNONS

CAPE
CAPTAIN FLINT
CAPTAIN SMOLLETT
CHEST
COAST
COMPASS
COVE
CREW
CUTLASS
DR. LIVESEY
GUINEAS
HISPANIOLA

ISLAND
ISRAEL HANDS
JIM HAWKINS
JOLLY ROGER
LOGBOOK
LONG JOHN SILVER
MAROONED
MUSKET
MUTINY
PARROT
PIRATES
PISTOL

QUARTERMASTER
SAIL
SCHOONER
SEAFARING
SEAMEN
SHIP
SKELETON
SPY-GLASS
SQUIRE TRELAWNEY
THE BLACK SPOT
TREASURE
WALRUS

WORLD TRANSNATIONAL OPEN SWISS AND KNOCKOUT TEAMS

August 28 – September 2

MARRAKECH GRAND PRIX TRANSNATIONAL BOARD-A-MATCH (BAM) TEAMS

August 30 – September 1



PLAY FOR WBF TITLES, MEDALS AND MASTERPOINTS AGAINST PLAYERS FROM ALL OVER THE WORLD

PLAY PRESTIGIOUS CHAMPIONSHIP EVENTS AGAINST THE WORLD'S BEST PLAYERS

ENJOY WORLD CLASS PLAYING CONDITIONS IN A UNIQUE LOCATION

5 OR 6 DAYS OF PLAY ACROSS BOTH EVENTS FOR ONE ENTRY FEE

BOTH EVENTS PART OF THE WORLD BRIDGE TOUR



Marrakech,
Morocco



Check details on the back →

WWW.WORLDBRIDGE.ORG

WORLD TRANSNATIONAL OPEN SWISS KO TEAMS

August 28 – September 2

- ♣ WBF titles, medals and Masterpoints
- ♣ 2 Days of Swiss Qualifying followed by 3 (4 if reaching the Final) days of KO
- ♣ A "stand-alone" championship, including non-qualifiers from the Bermuda Bowl (BB), Venice Cup (VC), D'Orsi Trophy (DOT) and Wuhan Cup (WC)
- ♣ Players eliminated on day 2 or 3 can enter the Marrakech GP Transnational BAM Teams free of charge

MARRAKECH GRAND PRIX TRANSNATIONAL BAM TEAMS

August 30 – September 1

- ♣ WBF titles, medals and Masterpoints
- ♣ 2 Days of Qualifying followed by Finals A and B (everyone plays for 3 days)
- ♣ A "stand-alone" championship, including players eliminated in the Quarterfinals of the Bermuda Bowl (BB), Venice Cup (VC), D'Orsi Trophy (DOT) and Wuhan Cup (WC)

ENTRY FEES - BOTH EVENTS TOGETHER

♣ Players from the BB, VC, DOT and WC	Free
♣ New players (per player)	350 €
♣ Moroccan BF members (per player)	250 €
♣ Youth players - U26 (per player)	175 €

ENTRY FEES - BAM ONLY

♣ Players from the BB, VC, DOT and WC	Free
♣ New players (per player)	250 €
♣ Moroccan BF members (per player)	150 €
♣ Youth players - U26 (per player)	100 €

The total Entry Fee for a Team is the sum of the 4 highest paying players, i.e. a maximum of € 1,400 respectively € 1,000.



WWW.WORLDBRIDGE.ORG

The **Bermuda Bowl**, **Venice Cup**, **d'Orsi Senior Bowl** and the **Wuhan Cup** are for national teams, respectively Open, Women, Seniors and Mixed, representing their countries, qualified from the 8 WBF Zonal Conferences.

The **World Transnational Open Teams** is open, without any qualification, to all teams, national or transnational, which want to participate, accordingly to the conditions of contest.

The **World Bridge Teams Championships**, the oldest WBF Championship, grew out of private initiatives principally by the late Norman Bach. The first world championship for the Bermuda Bowl was held in 1950, in Bermuda, 8 years before the World Bridge Federation itself was formed. After the first event of the series, the Bermuda Bowl developed into a regular challenge match between the USA and the winners of the European Championship, but in 1957 the contest widened to included teams representing other zones of the WBF.

In 1974, in Venice, Italy, a new event was launched, the Venice Cup. It started as a challenge match between women's teams from the USA and Italy (Europe 's representative) and today it is the equivalent of Bermuda Bowl for women, organized under the same laws and format.

A third series, the Senior Bowl, for senior players was added in 2001. Ernesto d'Orsi, Past President of the WBF and a member of the WBF Committee of Honor and the WBF Executive Council, presented the d'Orsi Seniors Trophy for the winners of this Championship at the World Teams Championships held in Brazil in 2009.

In March 2018 in Philadelphia the Executive Council added a fourth series for Mixed Teams starting from 2019 in Wuhan, China. This new event was named after the City of Wuhan which presented the prestigious trophy and provided, and will provide for the future editions, replicas for the winners.

Pun-ishment!



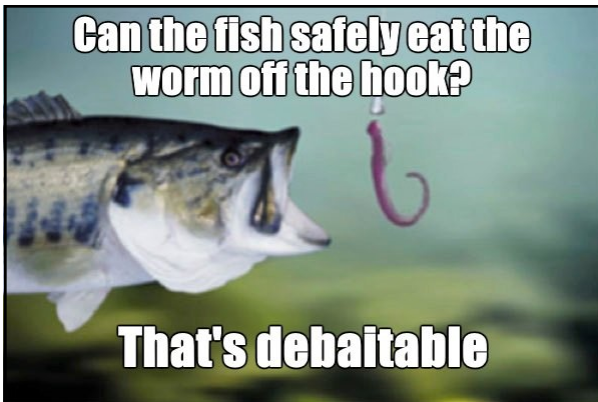
No one will tire of that!



How we got Howie Doing and Limey Jack?



A-Pun, A-Two, A-Three!



Shouldn't the opposite of daylight savings time be daylight spending time?



What kind of car does a sheep drive? A Lamborghini!

Dance instructions: Divide and conga!

Tranquilizers only work if you heed the advice on the bottle:
Keep away from children!

With a telepathic abacus, it's the thought that counts!

One thing about getting drunk... it affects your sleep... last night I slept like a log and woke up in the fireplace!

Yesterday my boss said he was going to fire the person with the worst posture. I have a hunch. I think it might be me!

Logic Puzzle...

	Flowering Almond	Mimosa	Sweetbay Magnolia	Weeping Cherry	Dogwood White	azalea	hydrangea	lilac	rhododendron	wisteria	daffodils	hyacinths	muscari	pansies	tulips	amaryllis	crocus	dahlia	gladiolus	geraniums
fountain																				
fountain																				
goldfish pond																				
waterfall																				
waterfall																				
amaryllis																				
crocus																				
dahlia																				
gladiolus																				
geraniums																				
daffodils																				
hyacinths																				
muscari																				
pansies																				
tulips																				
azalea																				
hydrangea																				
lilac																				
rhododendron																				
wisteria																				

**Answer on Page 15
Bottom of Page**

Water Feature	Type of Tree	Type of Bush	Type of 1st Flower	Type of 2nd Flower

Gene owned a landscaping business and loved his work. For his summer project this year, he decided to divide the yard around his house into five different sections and landscape each area to a different style. He also decided that each section should focus around a water feature, just to give himself a challenge. Around each water feature, he introduced a different type of flowering tree, one type of bush, and two types of flowers. Beyond that, he kept the landscaping simple to allow the beauty of the setting to speak for itself. It took him almost all of the summer but the end results were well-worth the effort. Determine the type of water feature each section had, and the types of trees, bushes, and flowers he planted in each area.

- The two sections with waterfalls were the section with a dogwood tree and the section with crocus flowers. The lilacs were planted by the goldfish pond but not with the weeping cherry tree.
- The mimosa tree was planted with the daffodils but not with the gladiolus. The weeping cherry tree was not in the same section as the rhododendron.
- The muscari wasn't planted around a fountain. The pansies were planted with the amaryllis but not with the rhododendron.
- One section had tulips and dahlias but not with the flowering almond tree. One of the fountains was planted with azalea but not with the pansies.
- The hydrangeas were not planted with the geraniums. The sections with the fountains were the section with the gladiolus and the section with the flowering almond tree.
- The wisteria was planted with the sweetbay magnolia tree but not by a fountain. The weeping cherry tree was planted with hyacinths.

Meet the Players

Joe Grue started playing bridge in his early teens. He was fortunate to have superb mentors. Fine Minnesota players such as Jerry Lee, Kerry Holloway, Larry Oakey and others worked with Joe in his youth. His parents Sue and Tom, as well as his grandmother, Maggie Grue, heightened his interest in the game and taught him much of what he knows.

In 1997, while still a teenager, **Joe Grue** won his first national event: Grand National Teams Flight C. From that point on, Joe was hooked. He added more and more wins, many truly major. His second national win was the prestigious Reisinger, an event many consider to be the toughest of all! Among Joe's ACBL achievements is a record of winning the Blue Ribbon Pairs three times in four years. Joe has won several junior titles on the world stage as well as the Bermuda Bowl!

Joe's Bridge Achievements:

2023	1	Vanderbilt Knockout Teams	NABC+
2018	1	Kaplan Blue Ribbon Pairs	NABC+
2018	1	Mitchell Open Board-a-Match Teams	NABC+
2018	1	Vanderbilt Knockout Teams	NABC+
2017	1	Kaplan Blue Ribbon Pairs	NABC+
2016	1	Spingold Master Knockout Teams	NABC+
2015	1	Kaplan Blue Ribbon Pairs	NABC+
2012	1	Vanderbilt Knockout Teams	NABC+
2011	1	Baldwin NAP Flight A	NABC+
2008	1	Keohane North American Swiss Teams	NABC+
2006	1	Reisinger Board-a-Match Teams	NABC+
1997	1	Grand National Teams Flight C	NABC



Joe Grue with early mentor, Kerry Holloway

Photo Credit: Peggy Kaplan

2021	2	Keohane North American Swiss Teams	NABC+
2019	2	Grand National Teams Championship Flight	NABC+
2016	2	Kaplan Blue Ribbon Pairs	NABC+
2015	2	Jacoby Open Swiss	NABC+
2013	2	Spingold Master Knockout Teams	NABC+
2011	2	Vanderbilt Knockout Teams	NABC+
2009	2	Grand National Teams Championship Flight	NABC+

In this event, Joe is playing on the Fleisher team with Marty Fleisher, Chip Martel, Brad Moss, Jeff Meckstroth and Zia.

Favorite Bridge Memory

Playing juniors with my boy Kran !

Bridge Accomplishments

victories: 3 World Junior Championships, Blue Ribbon pairs (3) 2015, 2017, 2018, Mitchell Bam 2018, Bermuda bowl 2017, Reisinger 2006, Spingold 2016, Vanderbilt 2012 & 2018, North American Swiss 2008, NAP A 2011, 2nds: GNT championship flight 2009, Vanderbilt 2011, Spingold 2013, Jacoby Swiss 2015, Blue ribbon pairs 2016, GNT championship flight 2019, North American Swiss 2021

Regular Bridge Partners

Brad Moss

Member of Bridge Club(s)

Cavendish Bridge Club

Favorite Conventions

Mixed Raises

BBO Username

joegrue

ACBL Ranking

Grand Life Master

Joe's Bridge Winner's Profile



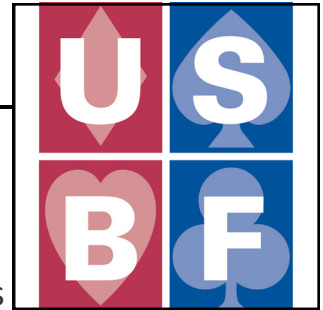
8	9	4	3	5	1	6	7	2
1	6	2	9	8	7	4	3	5
5	3	7	2	6	4	1	8	9
6	7	5	8	2	1	9	4	3
9	2	8	3	7	5	6	1	4
3	4	9	2	1	8	7	5	6
1	6	7	5	3	4	8	2	9
8	2	5	9	7	6	1	4	3
7	1	3	4	9	5	6	8	2
6	5	8	3	2	7	9	1	4
4	9	2	8	6	1	3	5	7

Answer to Sudoku 1

9	3	8	7	2	6	5	1	4
5	4	2	9	1	3	7	8	6
6	1	7	4	8	5	2	9	3
7	5	6	2	9	1	4	3	8
8	2	3	6	4	7	1	5	9
1	9	4	8	5	3	6	7	2
3	7	8	6	9	2	4	1	5
2	7	1	3	8	4	9	1	6
7	1	3	4	9	5	6	8	2
6	5	8	3	2	7	9	1	4
4	9	2	8	6	1	3	5	7

Answer to Sudoku 2

Sudoku Answers Puzzles on Page 9



USBF Supporting Membership

If you don't want to play in the USBF Championships that choose teams to represent the USA in the World Bridge Federation Championships, but do want to aid our events, a **Supporting Membership** can be the perfect way for you to be involved.

A Supporting Membership is \$25 for one year (\$75 for 3 years) and your donation will be used to cover inevitable expenses: attorney fees, accounting fees, website support services, tournament directors, insurance, WBF dues, and vugraph operators.

The USBF is an **all-volunteer** organization.

Our meetings are by conference call and at NABCS. Board members and the organization's officers are not compensated for meetings, travel, or hotel expenses.

I never thought laundry detergent could go bad but it seems the Tide has turned!

A good lawyer knows the law. A great lawyer knows the judge!

I got booted from the Coffee Club because I wore a tea shirt!

When I think of Canada, it's always eh-musing!

Water Feature	Type of Tree	Type of Bush	Flower	Type of 2nd Flower
fountain	Weeping Cherry	azalea	hyacinths	gladiolus
fountain	Flowering Almond	hydrangea	pansies	amaryllis
goldfish pond	Mimosa	lilac	daffodils	geraniums
waterfall	Sweetbay Magnolia	wisteria	muscar	crocus
waterfall	White Dogwood	rhododendron	tulips	dahlia

**Answer
to Puzzle
on page 13**



Bridge: A MindSport For All

Connects People, Challenges Minds

Sam Punch is an amazingly hard worker and a wonderful promoter of our game! She has worked wonders in the last several years organizing and heading BAMSA. We support her wonderful work and hope you support it too!

Bridge, Youth and Schools



Who am I? My name is Samantha Punch, Professor of Sociology at the University of Stirling, UK. I lead the international work of BAMSA.

What is BAMSA? *Bridge: A MindSport for All* (BAMSA) is a research project working collaboratively with bridge organisations to increase the number of players and transform the image of the mindsport.

BAMSA believes that bridge can be promoted as a potential solution to tackle big societal issues of social isolation, loneliness, mental health problems, inclusivity and healthy ageing.

BAMSA's new study

The new project aims to develop academic evidence that demonstrates the skills and wide-ranging benefits that bridge, as a mindsport, can offer young people. The study will investigate the benefits and challenges of teaching bridge in schools. The goal is to encourage schools to take bridge as seriously as chess, and mindsport education as seriously as physical education.

How can donating help?

By donating, you enable BAMSA to conduct this work in the USA as well as Europe. The funding pays for the researchers to interview school teachers, bridge teachers, pupils and parents to explore what helps and hinders learning bridge. The funds are used to develop practical resources from the findings to enable growth of youth bridge communities in USA and Europe.

How can I donate? ***All donations will be doubled* (matched by Levine Foundation)**

Online via the University website: www.stir.ac.uk/carddonate Scroll to the bottom of the page and choose single gift, this will direct you to our donation form where you can select "Bridge Research Project" as your designated cause.

Tax efficient giving for US donors: The University of Stirling is an approved institution with British Schools & Universities Foundation. You donate through their website stating that you wish the donation to go to the University of Stirling: www.bsuf.org/donate

Via the Keep Bridge Alive Crowdfunder: <https://www.crowdfunder.co.uk/p/u5c0e5e7810869>

Thank You! Need more information?

Contact Sam with any queries – s.v.punch@stir.ac.uk

Follow BAMSA @bridgemindsport www.bridgemindsport.org



BAMSA: BRIDGE: A Mindsport for All

The World Bridge Federation will not permit Russian or Belarusian players to play in any events ... even the Transnationals... at the World Championships in Marrakesh. This current position will be discussed at the Executive Council meeting in Morocco to determine policy going forward.

The WBF is also updating its Conditions of Contest to make them clearer and to bring them up to speed with the current bridge environment.



WBF News

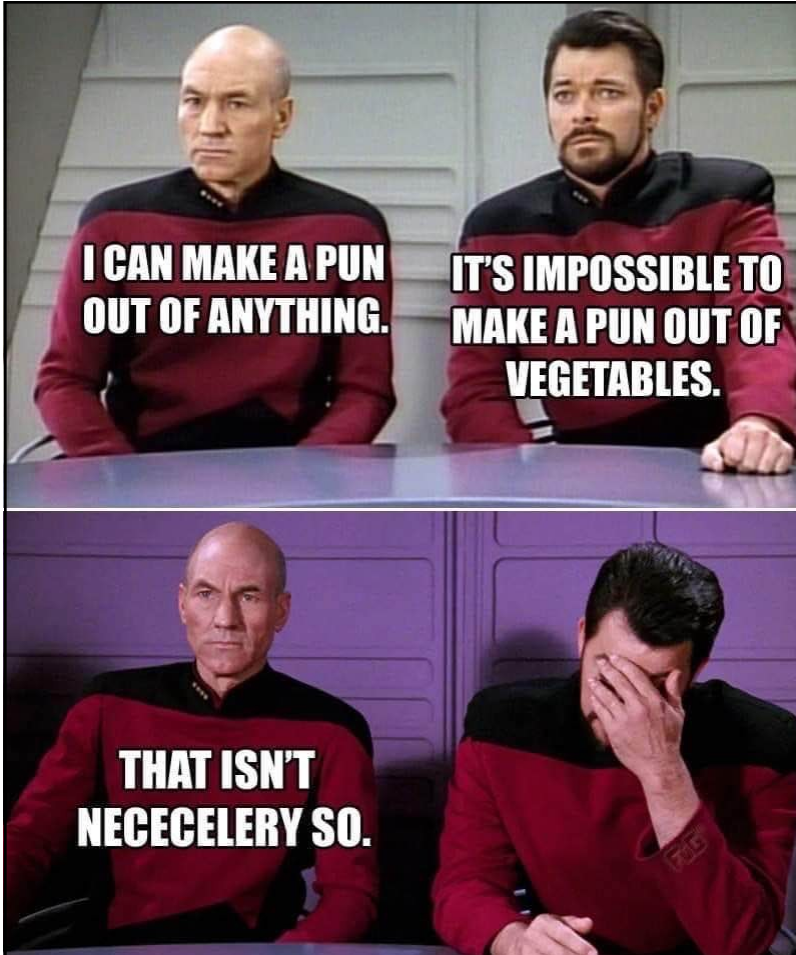
Please pick up a Chicago NABC flyer before you leave Schaumburg.

We want to see you there!!

Rooms are filling.

We have engaged the Intercontinental as our overflow hotel!

Also grab a Chicago NABC Convention Card Sticker from the table in the Break Room where the newsletters are.



I have two friends who are golf partners. One is a scratch golfer and the other is itching to be!

A friend had a new baby girl.

Her coworker asked: "What's her name?"

My friend replied: "Melanie Noelle."

Her coworker: "How do you spell it, then?"

I paid \$1 for a wig today. It was a small price toupee!

Horses never get divorced because they have such stable relationships!

BOARD: 6		DEALER: EAST		VULNERABLE: E-W		♠ AJT3		♥ QJ932		♦ A964		♣											
♠ K64		♥ AKT54		♦ K3		♣ A85		♠ Q982		♥ 86		♦ QT2		♣ KT72									
Par: -120		♠ 75		♥ 7		♦ J875		♣ QJ9643		NS		EW		N									
NS		6		7		5		5		5		EW		7		6		8		8		8	

Home team		Visiting team		Room	By	By	=	★	IMP				
									NS	EW	Home	Visiting	
1	Goodman	Gu		Open	3N	W	♦4	-2	200				
				Closed	3♥x	W	♦A	-1	200				
2	Bramley	Schireson		Open	3♣x	S	♥A	-3		500			
				Closed	3♥	W	♦A	-3	300				
3	Rosenthal	Dinkin		Open	2♣	W	♠A	-1	100				
				Closed	3Nx	W	♥Q	-1	200				
4	Fleisher	Baseggio		Open	3♣x	S	♥A	-2		300			
				Closed	3Nx	E	♣Q	-1	200				
5	Levine	Amer		Open	2♥	W	♥3	+1		140			
				Closed	3N	E	♠5	-2	200				
6	Juster	Simson		Open	3N	E	♣Q	-1	100				
				Closed	3♣x	S	♥K	-4		800		14	

The first swings of the 2023 USBC came on Board 6. In the Open Room of Bramley/Schireson, McAllister, E, passed and K Rosenberg, S, opened 3C. Watson had choices: double, 3H, or 3NT. Will chose double. McAllister, W, passed. They played it in 3CX and failed by 3 tricks. In the Closed Room, Bramley passed and Shireson, S, like his partner's son, opened 3C. Woolsey chose 3H. The ugly split was gruesome. D Rosenberg led the DA followed by the D6. Woolsey won his king and cashed the HK. Had he led a black suit at this point, he could collect 8 tricks. Woolsey continued with the HA. He played a spade to the queen and cashed the DQ, discarding a club. Playing on clubs would have allowed Woolsey to take seven tricks. Woolsey played on spades and suffered a three trick defeat.

13 IMPS to Mama Rosenberg!

In the Open Room of Fleisher/Baseggio, both E and S passed. W, Lin, opened 1H. N, Martel, passed and E, Hoskins, bid 1S. Fleisher, overcalled 3C; Lin doubled and everyone passed. Lin led the HA, followed by the S6. Fleisher won dummy's ace and played the HQ, discarding his losing spade while Lin won her king. The SK was ruffed. The D8 floated to the ten. The DQ went to the 7, K, A. Martel played the HJ, ruffed with the 7 and overruffed with the 9. Fleisher played dummy's H3 and Hoskins needed to ruff with the CT or higher to defeat the contract three tricks. He pitched the S9 and Fleisher was able to trump with the C4. Fleisher played the DJ and Lin ruffed. Lin played the HT to the H9, CK, and Fleisher had no choice but to underruff! Fleisher finished down two! In the other room of this match, E/W played in 3NTX down one.

11 IMPS to Baseggio

(Continued on page 19)

♠ AJT3 ♥ QJ932 ♦ A964 ♣	N Peter Weichsel	♠ Q982 ♥ 86 ♦ QT2 ♣ KT72	E Gary Cohler
♠ K64 ♥ AKT54 ♦ K3 ♣ A85	W Billy Cohen	♠ 75 ♥ 7 ♦ J875 ♣ QJ9643	S Bob Hamman

EAST NS
3NT 0

The greatest swing on this board occurred in Juster/Simson.

In the Open Room, where Weichsel was N, Cohler, E, Hamman, S, and Cohen, W, 3NT was played from East. Hamman led the CQ and Cohler won his K. Cohler played the H6 to the 7, T, J. Peter played the D6 to his partner's J and West's K. The SK was won with declarer's ace and the D4 was won by East's queen. A heart to the ace was followed by the SJ which East ducked. The DA and D9 were cashed and declarer conceded down one.

In the Closed Room, Simson, as others, passed in first seat and came in with 3C over 1H-P-1S. Juster doubled and led the HK followed by the S4. Morgan, E, won his SQ. The diamond deuce rode to the king and ace and Simson cashed dummy's SA. At this point, Simson needed to play a diamond off dummy to hold the contract to down three.

Open:

W	N	E	S
		PASS	PASS
1♥	1♠	1NT	PASS
3NT	PASS	PASS	PASS

He chose to play the S3 and was ultimately set four tricks! The S3 was ruffed with the C3. The D7 was won by Morgan's ten. Morgan cashed the DQ and exited with the S9. Simson ruffed in hand with the C9. He played the D8, ruffed by Juster's C5, Morgan tossing his last heart. The HA was ruffed with Morgan's C7 and overruffed with Simson's CJ. Simson played the C4 to the 8, H9, and C2. Juster cashed his high club and Morgan ruffed the 13th trick with his CK! 14 IMPs to Juster

Closed:

W	N	E	S
		PASS	PASS
1♥	PASS	1♠	3♣
DBL	PASS	PASS	PASS

Did players fare better by opening a Woolsey-style 3C or by jumping in with 3C later in the auction? Bidding 3C in either position is extremely risky. Note that neither side succeeded in any contract after South bid 3C in any position.

At only one of the twelve tables was any contract successful. In Levine/Amer, at the Open table, N/S were silent throughout. Anam, West, opened 1H. Arbit, East, responded 1S. Anam rebid 2C (Gazilli). Arbit bid 2H showing a doubleton heart and less than 8HCP. Everyone passed.

Levine had a really difficult hand from which to lead. He chose the H3 which was won by declarer's ten. At this point, the contract was cold. The defense slipped a trick and Anam took nine.

W	N	E	S
		PASS	PASS
1♣	2♦	DBL	PASS
2♥	PASS	2NT	PASS
3NT	PASS	PASS	PASS

← In the other room, E/W, Dwyer/Huang respectively, appear to have had a slight misunderstanding. 1C was Precision; 2D showed either diamonds or majors; Double was explained as 0-5 or GF with no clear cut call. Dwyer held neither of these.

Huang rebid 2H and Dwyer bid 2NT, the last makeable contract. Apparently Huang believed Dwyer held the GF and bid 3NT.

Lien led the S5 to the ten and queen. Declarer fell from grace when he led a diamond at trick two, setting up the opponents' sixth trick when the DJ was offside. 8 IMPs to Amer

This hand illustrates how a simple part score board can generate double digit swings in nearly half the tables!

BOARD: 9
 DEALER: NORTH
 VULNERABLE: E-W

♠ AT5
 ♥ KQ763
 ♦ 9
 ♣ K532

♠ KQ94
 ♥ 952
 ♦ JT
 ♣ QJ84

♠ J732
 ♥ AT
 ♦ AK842
 ♣ A6

Par: -620
 NS 6 4 6 3 5
 EW 7 9 6 10 8

♠ 86
 ♥ J84
 ♦ Q7653
 ♣ T97

	Home team	Visiting team	Room	By	=	IMP		Cross				
						NS	EW	Home	Visiting	NS	EW	
1	Goodman	Gu	Open	4♠	W	♦9	=	620	-	-	-2.09	2.09
2	Bramley	Schireson	Open	4♠	W	♦9	=	620		12	-2.09	2.09
3	Rosenthal	Dinkin	Open	4♠	W	♦9	=	620	-	-	-2.09	2.09
4	Fleisher	Baseggio	Open	3♦	E	♠8	=	110	11		9.45	-9.45
5	Levine	Amer	Open	4♠	W	♦9	=	620	-	-	-2.09	2.09
6	Juster	Simson	Open	3N	E	♥4	=	600	1		-1.09	1.09

W	N	E	S
	1♥	DBL	2♥
2♠	3♥	4♠	PASS
PASS	PASS		
Kit	Debbie	Bart	Max

10 pairs played Board 9 in 4S from West. It is rare to report a hand where Kit Woolsey is the only one of the ten to suffer defeat. It was all on the opening lead.

Schireson's 2H was alerted and explained as less than a constructive raise.

Every other declarer received the lead of North's singleton diamond NINE! This lead solidified declarer's diamond suit, allowing declarer to draw trumps and give up only a heart, a diamond, and the trump ace when the CK was onside.

Against Woolsey, Debbie Rosenberg led the HK. Kit ducked and won the heart continuation. He played the spade deuce to his queen and Debbie's ace. Rosenberg shift to the C2 and Woolsey won the queen.

At this point, not knowing the diamond position, Woolsey played the DT, losing to Schireson's queen. Schireson played a diamond and Debbie ruffed to defeat the game. 12 IMPs to Schireson

Rosenberg made a wise decision to lead the suit which she and partner had bid and raised.

At the other tables where hearts were bid and raised, the lead of the D9 alerted declarer to the possibility of a singleton, making it clear that extracting trump immediately was the winning option.

Memories: Going Back in Time...

LEVINE

- ♠ XX
- ♥ A7XX
- ♦ JXX
- ♣ T9XX

PEPSI

- ♠ AX
- ♥ Q8X
- ♦ KQXXXX
- ♣ JX

ZIA

- ♠ JXXXX
- ♥ 9X
- ♦ XX
- ♣ QXXX

WOLD

- ♠ KQXX
- ♠ KJTX
- ♥ AT
- ♦ AKX



Returning to Schaumburg reminded Eddie Wold of a favorite play hand from years gone by.

Eddie declared 4H from South. Pepsi was West and Zia was East. Mike Levine was Eddie's partner.

Pepsi led the DK. Eddie won the ace and returned the DT. Pepsi won and continued with a third diamond. Zia trumped with the nine. If Wold overruffs, this will establish a trump trick for Pepsi... so Wold judiciously discarded a small club.

Zia played a club. Wold won the ace and played the HT. Pepsi ducked!!

Pepsi does best to cover this, but it is not at all obvious... as Zia later explained (not too quietly)!!

Wold cashed his HK and CK, dropping Pepsi's CJ. A heart to the ace followed, drawing the last trump. Wold led the CT and discarded a spade. He gave up the SA and claimed. Wold was the only declarer to find this play. Well done! Eddie fondly remembers Justin Lall, RIP, playing the hand in the other room.

In Juster/Simson, Jacob Morgan, fresh from the District 13 Spring Regional, and Jeff Juster used a clever gadget they had in their arsenal to reach a cold 6D slam:

W	N	E	S
		PASS	1♥
PASS	2♦	PASS	4♣
PASS	4♦	PASS	5♣
DBL	6♦	PASS	PASS

4C=a 4 card D fit and short spades
4D=KC
5C=2 with the Q

After the KC response, Morgan knew that 6D would have a good play as long as Juster held the HK.

After his partner's double, Simson led the CA. He continued clubs. Morgan trumped, drew trumps in two rounds, and claimed twelve tricks.

At the other table, Cohen, South, and Cohler, North, stopped in 4H, making six:

W	N	E	S
		PASS	1♥
PASS	2♦	PASS	3♦
PASS	3♥	PASS	3♠
PASS	4♥	PASS	PASS

12 IMPs to Juster

Cross IMPs...

1.	Finn Kolesnik - Ish DelMonte	Rosenthal	2.44	109.73	45
2.	Daniel Korbel - Roger Lee	Levine	1.99	89.38	45
3.	Chip Martel - Marty Fleisher	Fleisher	1.87	82.42	44
4.	Ai-Tai Lo - Alex Kolesnik	Gu	1.44	64.78	45
5.	Brad Moss - Joe Grue	Fleisher	1.42	63.99	45
6.	Andrew Rosenthal - Aaron Silverstein	Rosenthal	1.00	30.09	30
7.	Ron Smith - Ethan Wood	Dinkin	0.87	26.15	30
8.	Jeff Meckstroth - Zia Mahmood	Fleisher	0.87	26.10	30
9.	Pratap Rajadhyaksha - Venkatrao Koneru	Goodman	0.50	20.09	40
10.	Kevin Dwyer - Shan Huang	Levine	0.29	12.96	45
11.	Gary Cohler - Billy Cohen	Simson	0.26	14.54	57
12.	Jeff Aker - Doug Simson	Simson	0.18	10.44	59
13.	Brian Platnick - Kevin Rosenberg	Bramley	0.15	9.08	59
14.	Jiang Gu - Walter Lee	Gu	0.15	4.09	28
15.	Debbie Rosenberg - Max Schireson	Schireson	0.13	7.59	59
16.	Bart Bramley - Kit Woolsey	Bramley	0.03	1.91	60
17.	John Schermer - Neil Chambers	Juster	-0.01	-0.17	30
18.	Andy Goodman - Mike Passell	Goodman	-0.02	-0.55	30
19.	Jacob Morgan - Jeff Juster	Juster	-0.09	-3.90	44
20.	Chris Willenken - Eldad Ginossar	Rosenthal	-0.20	-8.79	45
21.	John McAllister - Will Watson	Schireson	-0.31	-18.58	60
22.	Mike Levine - Eddie Wold	Levine	-0.33	-9.92	30
23.	Julie Arbit - Anam Tebha	Amer	-0.39	-23.22	60
24.	Peter Weichsel - Bob Hamman	Juster	-0.50	-20.91	42
25.	Chris Compton - Adam Wildavsky	Gu	-0.56	-23.64	42
26.	Tom Breur - Ethan Wood	Dinkin	-1.00	-30.09	30
27.	Christian Jolly - Owen Lien	Amer	-1.15	-69.20	60
28.	Jeff Ferro - Franco Baseggio	Baseggio	-1.39	-83.19	60
29.	Drew Casen - Jim Krekorian	Goodman	-1.44	-64.78	45
30.	Drew Hoskins - Amber Lin	Baseggio	-1.51	-89.33	59
31.	Michael Shuster - Sam Dinkin	Dinkin	-2.12	-127.09	60

Board 49

♠ 976
♥ AQJT98
♦ JT97
♣

N Pratap Rajadhyaksha

♠ A2
♥ 65
♦ 65
♣ KT87543

W Adam Wildavsky

♠ KQ85
♥ 42
♦ K8
♣ AQJ96

E Chris Compton

♠ JT43
♥ K73
♦ AQ432
♣ 2

S Venkatrao Koneru

NORTH NS
5♥ X 0

W	N	E	S
	3♥	DBL	4♥
5♣	PASS	PASS	5♦
PASS	5♥	PASS	PASS
DBL	PASS	PASS	PASS

In Goodman/Gu, Compton and Wildavsky defended perfectly to defeat 5HX.

Compton led his SK. Wildavsky overtook and continued spades. Compton judged rightly and gave Adam a ruff to defeat the contract.

At the other table, against 5H undoubled, Krekorian also led the SK. Casen overtook and continued spades.

Krekorian got greedy. He thought he could defeat the contract two tricks by cashing his CA first... oops...

Kolesnik ruffed, pulled trump, finessed the DK and claimed eleven tricks! 11 IMPs to Compton