

# Open USA2

#	TEAM	IMPs Total	SET #1	SET #2	SET #3	SET #4	SET #5	SET #6	SET #7	SET #8	Adjustment (IMPs)
2	<a href="#">Spector</a>	105	21	44	18	22					
3	<a href="#">Bramley</a>	103	38	37	21	7					

# Beth Palmer Results at the half USA1

1	<a href="#">Baker</a>	88	11	29	4	44					
2	<a href="#">Wittes</a>	102	13	30	28	31					
<b>USA2 SemiFinal (120 boards)</b>											
3	<a href="#">Howard</a>	79	34	13	6	26					
4	<a href="#">Cole</a>	169	33	78	44	14					

Until the end of the Women's event, the Daily Bulletin will feature highlights from both the Open and Women's!

LoveBridge computes some interesting statistics on each player each day. Today you can see yesterday's statistics and tomorrow you can see the stats from today. To view, you must go to [https://stats.lovebridge.com/statistics/usbc\\_2285](https://stats.lovebridge.com/statistics/usbc_2285) and enter your username. Each player has an individual username and password. Anyone can view a complete set of stats by clicking the tournament link and selecting USBC Open All.

Your personal stats are only available when you're logged in.

In the Daily Bulletin from the Senior Online Championships on October 3, you may have seen the **In Memoriam** for Jeff Goldsmith. Jeff lost his battle with cancer last week.

Jeff's family has designated the **USBF Junior Fund**, a 501C(3) charity, for donations in his memory. Donations may be made through the USBF website (USBF.org) and will be properly acknowledged. This was a very kind gesture by Jeff and his family who recognized how important bridge was to Jeff.

## USBF President

Brad Moss

## USBF Vice President

Kate Aker

## USBF COO & Secretary

Jan Martel

## USBF CFO & Treasurer

Stan Subeck

## Director

McKenzie Myers

Chris Wiegand

Will Watson (Senior Online)

## Tournament Organizer

Jan Martel

## Software Expert

Al Hollander

## VuGraph Organizer

Chris Wiegand

## Appeals Administrators

Suzi Subeck, Chairman

Bill Arlinghaus

Martha Katz

## Appeals Panel:

Cheri Bjerkan

Mark Feldman

Ron Gerard

Marty Hirschman

Rich DeMartino

George Jacobs

Kerri Sanborn

Danny Sprung

Joann Sprung

## Bulletin Editor

Suzi Subeck

## Photographer

Peg Kaplan

## Hospitality Chair

Christian Jolly

Julie Arbit

Evvie Gilbert

Maya Alela

# QuarterFinalists in Alphabetical Order

<b>Bramley</b>	Bart Bramley, Capt Mike Becker Hemant Lall	Kit Woolsey Peter Weichsel Michael Kamil
<b>Donner</b>	Gary Donner, Capt Radu Nistor Ish DelMonte	Sandra Rimstedt Iulian Rotaru Finn Kolesnik
<b>Fleisher</b>	Marty Fleisher, Capt Joe Grue Roger Lee	Chip Martel Brad Moss Daniel Korbel
<b>Gu</b>	Jiang Gu, Capt Ming Sheng Jian-Jian Wang	Hailong Ao Hongji Wei
<b>Hill</b>	Kevin Dwyer, Capt Shan Huang Joel Wooldridge	Joyce Hill David Grainger
<b>Levine</b>	Mike Levine Jeff Meckstroth Mike Passell Bob Morris, NPC	Eddie Wold Steve Garner Mark Lair
<b>Nickell</b>	Frank Nickell Geoff Hampson Bobby Levin Jill Levin, NPC	Ralph Katz Eric Greco Steve Weinstein
<b>Spector</b>	Warren Spector, Capt John Kranyak John Hurd	Gavin Wolpert Kevin Bathurst



## Face to Face Open USBC Tournament Schedule

### VACCINATION REQUIRED:

All players in the 2021 Open USBC MUST be vaccinated against CoVid19.

Players must submit proof of vaccination to the USBF Secretary (Jan Martel) before play commences in the event.

**This includes the online stages - players are not eligible to enter the event if they do not submit proof of vaccination.**

There are no exceptions to this rule.

Ed. Note:

With the delayed broadcasting and the Covid ban on kibitzing, it is especially challenging to write up the hands. If anyone has a hand of interest, please submit it to me at stansubeck@prodigy.net. I also welcome any human interest stories, news or gossip!!

Thanks.

Suzi



**No Electronic Devices are Permitted in the Playing Area.**

**This applies to players AND kibitzers.**

**Severe penalties will be assessed for violation of this rule.**

**Please turn off all cell phones and check them at the door.**

**The USBF reserves the right to wand anyone entering the playing field.**



DAY	DATE	TIME - CDT	BOARDS
<i>QUARTER-FINAL</i>			
MONDAY	OCT. 4	8:00 PM	CAPTAINS' MEETING WITH DIC (ON ZOOM)
TUESDAY	OCT. 5	10:00 - 12:10	SEGMENT 1 BOARDS 1-15
		12:25 - 2:35	SEGMENT 2 BOARDS 16-30
		3:45 - 5:55	70 MINUTE LUNCH BREAK
		6:10 - 8:20	SEGMENT 3 BOARDS 31-45
WEDNESDAY	OCT. 6	10:00 - 12:10	SEGMENT 4 BOARDS 46- 60
		12:25 - 2:35	SEGMENT 5 BOARDS 61-75
		3:45 - 5:55	SEGMENT 6 BOARDS 76-90
		6:10 - 8:20	70 MINUTE LUNCH BREAK
<i>SEMI-FINAL &amp; USA2 STAGE 1</i>			
THURSDAY	OCT. 7	10:00 - 12:10	SEGMENT 7 BOARDS 91-105
		12:25 - 2:35	SEGMENT 8 BOARDS 106-120
		3:45 - 5:55	70 MINUTE LUNCH BREAK
		6:10 - 8:20	SEGMENT 1 BOARDS 1-15
FRIDAY	OCT. 8	10:00 - 12:10	SEGMENT 2 BOARDS 16-30
		12:25 - 2:35	SEGMENT 3 BOARDS 31-45
		3:45 - 5:55	70 MINUTE LUNCH BREAK
		6:10 - 8:20	SEGMENT 4 BOARDS 46- 60
<i>FINAL &amp; USA2 QUARTERFINAL &amp; SEMIFINAL</i>			
SATURDAY	OCT. 9	10:00 - 12:10	SEGMENT 5 BOARDS 61-75
		12:25 - 2:35	SEGMENT 6 BOARDS 76-90
		3:45 - 5:55	70 MINUTE LUNCH BREAK
		6:10 - 8:20	SEGMENT 7 BOARDS 91-105
SUNDAY	OCT. 10	10:00 - 12:10	SEGMENT 8 BOARDS 106-120
		12:25 - 2:35	SEGMENT 1 BOARDS 1-15
		3:45 - 5:55	SEGMENT 2 BOARDS 16-30
		6:10 - 8:20	70 MINUTE LUNCH BREAK
<i>USA2 FINAL</i>			
MONDAY	OCT. 11	10:00 - 12:10	SEGMENT 3 BOARDS 31-45
		12:25 - 2:35	SEGMENT 4 BOARDS 46- 60
		3:45 - 5:55	70 MINUTE LUNCH BREAK
		6:10 - 8:20	SEGMENT 5 BOARDS 61-75
TUESDAY	OCT. 12	10:00 - 12:10	SEGMENT 6 BOARDS 76-90
		12:25 - 2:35	SEGMENT 7 BOARDS 91-105
		3:45 - 5:55	70 MINUTE LUNCH BREAK
		6:10 - 8:20	SEGMENT 8 BOARDS 106-120

**I once wanted to become an atheist, but I gave up - they have no holidays.**

**Henny Youngman  
(Happy Columbus Day!!)**

**You can't win unless you learn how to lose.**

**Kareem Abdul-Jabbar**

**Sports do not build character. They reveal it.**

**Heywood Broun**

# Beth Palmer

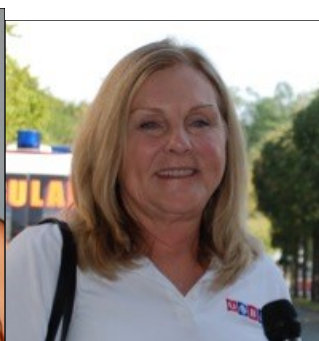
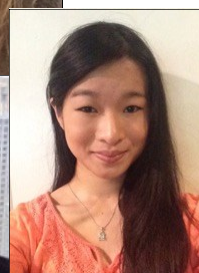
## WUSBC Teams Entered...

### Alphabetical Order



<b>Baker</b>	Lynn Baker Kerri Sanborn Janice Molson Sam Dinkin, NPC	Karen McCallum Jill Meyers Disa Eythorsdottir
<b>Cole</b>	Margie Cole, Capt Jenny Wolpert Shannon Cappelletti	Sandra Rimstedt Irina Levitina
<b>Howard</b>	Allison Howard, Capt Gigi Simpson Anam Tebha	Kay Enfield Gen Geiger Rose Meltzer
<b>Wittes</b>	Pam Wittes, Capt Cheri Bjerkan Emma Kolesnik	Shawn Quinn Rozanne Pollack Amber Lin

"A woman with a voice is, by definition, a strong woman."  
*Melinda Gates*



## FORMAT OPEN USBC

The face-to-face USA1 stages will be 2-day, 120-board KO matches.

The face-to-face USA2 stages will be a 2-day, 120-board KO R16 in which the 4 losing USA1 Quarterfinalists will play, followed by a 1-day, 60-board KO Quarterfinal, in which the 2 USA1 Quarterfinal losers will play the 2 USA2 Round of 16 winners; a 1-day 60-board KO Semifinal in which the USA2 Quarterfinal winners will play, and a 2-day 120-board Final between the USA1 Final loser and the USA2 Semifinal winner.

**Play Requirements:** Each player must play 10 matches in RR 1 and at least one segment against each other team in RR 2 to qualify for the KO stages (a player who does not meet the play requirements can be added back to the team as long as the requirements for roster changes are met. Each player must play 50% of the boards in every KO match to be eligible to continue on the team. See General Conditions of Contest Section XII (at USBF.org) about how to count boards and potential waiver of this requirement.

**Closed Notes:** Players may not consult their notes at any time during play unless they are dummy.

**Withdrawal:** A player or team may withdraw at any time.

**Play in the KO stages will be on LoveBridge tablets,** with either 2 or 4 players in a room.

**SETTING THE KO BRACKET: THE KO BRACKET WILL BE BASED ON ACBL SEEDING POINTS, EXCLUDING POINTS AWARDED FOR ONLINE PLAY, PLUS ADDED SEEDING POINTS FOR PERFORMANCE IN EACH STAGE OF THE ROUND ROBIN.**

DAY	DATE	TIME - CDT	BOARDS
<b>USA1 SEMIFINAL</b>			
FRIDAY	OCT. 8	8:30 PM	CAPTAINS' MEETING WITH DIC (ON ZOOM)
SATURDAY	OCT. 9	10:00 - 12:10	SEGMENT 1 BOARDS 1-15
		12:25 - 2:35	SEGMENT 2 BOARDS 16-30 70 MINUTE LUNCH BREAK
		3:45 - 5:55	SEGMENT 3 BOARDS 31-45
SUNDAY	OCT. 10	6:10 - 8:20	SEGMENT 4 BOARDS 46- 60
		10:00 - 12:10	SEGMENT 5 BOARDS 1-15
		12:25 - 2:35	SEGMENT 6 BOARDS 16-30 70 MINUTE LUNCH BREAK
MONDAY	OCT. 11	3:45 - 5:55	SEGMENT 7 BOARDS 31-45
		6:10 - 8:20	SEGMENT 8 BOARDS 46-60
		10:00 - 12:10	SEGMENT 1 BOARDS 1-15
TUESDAY	OCT. 12	12:25 - 2:35	SEGMENT 2 BOARDS 16-30 70 MINUTE LUNCH BREAK
		3:45 - 5:55	SEGMENT 3 BOARDS 31-45
		6:10 - 8:20	SEGMENT 4 BOARDS 46- 60
WEDNESDAY	OCT. 13	10:00 - 12:10	SEGMENT 5 BOARDS 1-15
		12:25 - 2:35	SEGMENT 6 BOARDS 16-30 70 MINUTE LUNCH BREAK
		3:45 - 5:55	SEGMENT 3 BOARDS 31-45
THURSDAY	OCT. 14	6:10 - 8:20	SEGMENT 4 BOARDS 46- 60
		10:00 - 12:10	SEGMENT 5 BOARDS 1-15
		12:25 - 2:35	SEGMENT 6 BOARDS 16-30 70 MINUTE LUNCH BREAK
		3:45 - 5:55	SEGMENT 7 BOARDS 31-45
		6:10 - 8:20	SEGMENT 8 BOARDS 46-60

## Beth Palmer Women's USBC Schedule

Why are cats bad storytellers? Because they only have one tale.

I tried to start a professional hide and seek team, but it didn't work out. Turns out, good players are hard to find.

A panic-stricken man explained to his doctor, "You have to help me, I think I'm shrinking." "Now settle down," the doctor calmly told him. "You'll just have to learn to be a little patient."

What do you call a dead magician? An abra-cadaver.

What do you call a paper airplane that can't fly? Stationary.



## KO KIBITZING ON LOVEBRIDGE

You can follow the USBC on the <https://vugraph.lovebridge.com/> website. The stream is delayed; go to the schedule below for starting times for each segment.

**Popcorn time!** Do you want to listen to commentary? Search for the TV icon! It will send you to the page where you can choose from the available live commentary. If inactive, no one is commenting.

### **Nail biting!**

Do you want to be deeply involved? Choose the “Match view” at the starting page of your event. Your screen will be divided into four small screens – two of them showing the two tables of the match you choose, the other two having the scoresheet for your match and the current scores of the other matches. In the 2x2 view you can personalize the content in your windows. (Not active on mobiles.)

### **Think together!**

When watching a table, click on a name and choose “Kibitz”. Instead of seeing all 4 hands, you will see what the player sees. You can decide what you would do and see whether your chosen player agrees.

### **More Information:**

Be well informed and tell your friends: while following the play, you can click many items. The image of the sticker with the number of the board (upper right) takes you to the results of the board, in the bottom right corner the arrow takes you the scoresheet, the DDS shows the double dummy analyses, beside that there is a button for the other table of the same match, at the top left corner you can see the bidding with alerts and the explanations (mouse over), the tricks already played, and the double dummy analysis for the available number of tricks with the par score.

### **Navigation icons:**

While surfing here and there in the vugraph, or amongst the archive sessions, there are icons to help you. You can always go back to the main page with the “house” or to the standings with the “scores”. If you cannot see the icons, move your mouse, or touch your screen and they pop up immediately. There is also a built-in back button because the back button of your browser will always take you to the starting page. If this is not what you wanted, push next in your browser and you can continue.

### **Replay:**

After the event you can find every board from every table easily. While replaying the hands, the only surprise can be the way “next board” button works. If you have arrived from a scoresheet, it navigates through the scoresheet. If you have arrived from a screen where the results were shown for a given board then the same buttons move you through the list. Push every button and enjoy!

### **KIBITZING SCHEDULE FOR THE KO (EDT)**

**Segment 1: 12:00 noon**

**Segment 2: 2:30 pm**

**BREAK**

**Segment 3: 6:00 pm**

**Segment 4: 8:00 pm**

**NEXT DAY**

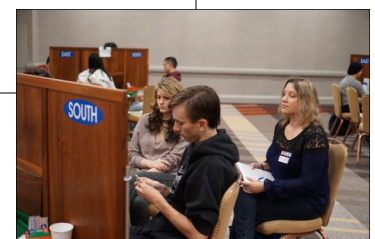
**Segment 5: 12:00 noon**

**Segment 6: 2:30 pm**

**BREAK**

**Segment 7: 8:00 pm**

**Segment 8: 10:15 pm**



## Mask Rules

Attendees are required to wear a mask that covers their nose and mouth in all public areas in the hotel. That means the hotel lobby, corridors, and elevators, as well as the **Hospitality Suite** and the **Office/Players' Break Room, where masks must be worn at all times. Therefore, there is no eating or drinking in those rooms.**

Our attorney has told us that the Cook County Mask Mandate forces us to require masks in the playing rooms. Therefore, we have adopted the following policy about that:

*Masks are required in playing rooms. If you are observed not wearing a mask in a playing room, there will be a 2 IMP penalty for the first offense in a segment, a 4 IMP penalty for the second offense, an 8 IMP penalty for the third offense, and a 16 IMP penalty for the fourth and subsequent offenses; however, if you and your opponent agree to something other than both wearing masks, any IMP penalties for not wearing a mask will apply to both of you equally and there will be no other penalties. You may remove your mask briefly to eat or drink. **However, if you call for a director (for any reason), and you are not wearing a mask properly when the director enters the room, the penalty will apply to your team for your **next match** in the event.** There is no eating or drinking in the playing room when the Director present.*

In addition, anyone who is penalized more than twice (over the course of the entire event) in situations where his/her opponent was wearing a mask while s/he wasn't, or where the director was called, may be subject to additional conduct penalties.

You should bring masks to the tournament with you; we will not be supplying masks.

## Covid Waiver

We are going to ask each player in these events to sign a COVID-19 Waiver of Claims. It is being sent to you by email and you may sign it electronically and return it to Jan ([marteljan@gmail.com](mailto:marteljan@gmail.com)) or you can sign a printed waiver at the site. Waivers will be available to sign in room 1321 starting Oct. 5th at 9:00 am. **Everyone is required to sign the form before the start of play!**

You are trapped in a room with two doors. One leads to certain death and the other leads to freedom. You don't know which is which.

There are two robots guarding the doors. They will let you choose one door but upon doing so you must go through it.

You can, however, ask one robot one question. The problem is one robot always tells the truth, the other always lies and you don't know which is which.

What is the question you ask?

## Logic Puzzle

## Solution

Ask one robot what the other robot would say, if it was asked which door was safe. Then go through the other door.

## Hospitality Information ... the Suite and more ...

Because of Covid, we won't be able to provide the full, wonderful hospitality we have in the past, but we will do what we can.

Hosts Evvie Gilbert and Maya Alela for the Open and Women's and Julie Arbit and Christian Jolly for the Mixed and Seniors will be in our usual hospitality suite (Room 2321). They will provide grab and go breakfast and lunch each day, starting on Tuesday, Oct. 5<sup>th</sup>.

**Breakfast:** From 8-10 am. There will be individually packaged cereal, fruit, hard boiled eggs, bagels, and some hot options. Also individual butter, jam, peanut butter, and cream cheese, as well as condiment packages. They will be making coffee and will have individual packages of sugar, sweetener, and dairy & non-dairy creamers. For those of you who prefer Keurig coffee, that will also be available in the hospitality suite. We are limiting access to 6 players at any one time, so we ask that you come to the suite, pick up a large to go container and put the smaller packages in that to take with you as quickly as you can, and then go someplace else to eat. **Masks that cover your nose & mouth must be always worn in the Hospitality Suite.** There will be a hand sanitizer station near the door and we encourage you to sanitize your hands before choosing what to take.

**Lunch:** From 2-4 pm (the first half of play each day ends at 2:35; we encourage those of you who are sitting out the 2nd quarter to go early). There will be a main dish (sandwiches, chicken, main dish salads, pizza) as well as individually packaged tuna salad, green salad, cheese, fruit, and berries. Also all the individual packages of add-ons we have for breakfast. Water and soft drinks will be available in refrigerators.

**Let us know what you want:** If there is a menu for a future day's lunch hanging on the wall outside the Hospitality Suite, please mark what you want, so we have a better idea of what to order.

### Playing Rooms & Player's Break Room

We will have bottled water in the playing rooms and if there is a refrigerator in a playing room, we'll stock it with soft drinks.

We will also have bottled water in the Player's Break Room (1321), as well as soft drinks, Nespresso, some packaged snacks, and some fruit.

**Masks that cover your nose & mouth must be always worn in the Player's Break Room, so you may not eat and drink in the room.**



Julie Arbit



Christian  
Jolly



Going through lines  
To pick up your food,  
Stay socially distanced.  
That isn't rude!

Bottled water and Soda in the Break Room!



# bid72

Work on your Partnership  
Try the App for Free



This app will connect you to bid72. All you need to do is scan it with your phone (Special thanks to my children and grandchildren for explaining how to accomplish this...)

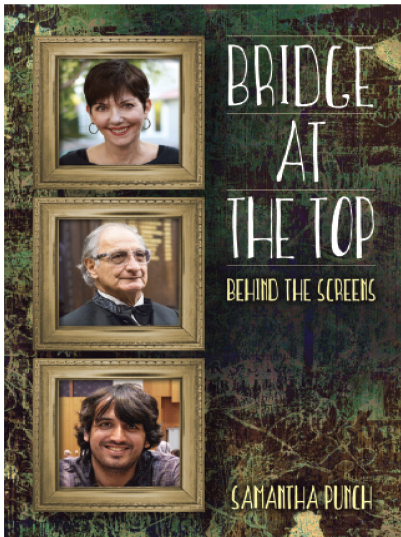
Jan VanCleaf provided this so our readers could use it to improve their bidding and better build partnerships. Bid72 allows users to participate in bidding contests, bid random boards and get a rating based on their bidding, learn about “topic board” hands dedicated to conventions and special agreements, and to create, upload and bid your own boards.

For more information, email [info@bid72.com](mailto:info@bid72.com)

In addition, Bid72 has an excellent newsletter to which you can subscribe.

Now Available

## Bridge at the Top *Behind the Screens* Samantha Punch



*The interviews make the names we see on VuGraph come to life. The tips are tricks of the trade that will be useful to players of all levels. It is a fun and informative read.*

— Jill Levin

*...intimate and revealing pictures of who these stars are, how they got to the top, and what keeps them there. The interviews are absorbing reading and the advice will help players at any level. The suggestions on partnership and mental toughness are of particular note.*

— Chip Martel

In the course of her research project, *Bridge: A MindSport for All*, sociologist Dr. Samantha Punch has been able to speak with many of the world’s top bridge personalities. The best interviews are collected in this book, and they offer fascinating insight into what it takes to be a top player, coach or even sponsor. As a bonus, each subject offers their favorite bridge tip.

US\$22.95 | GBP 17.95  
978-1-77140-064-0

Available to order today from your favourite bookstore.

 Master Point Press

*Samantha Punch’s book is recently published and ready for your reading pleasure.*

*Sam is an amazing advocate of the game and while I have not yet read the book, based on her work with “Keep Bridge Alive” and more, I am certain you will want to have this volume in your collection!*

*Learn about the experts... how they think... what they think... and why they are so driven by a card game.*

Editor



Samantha

		9		8				3
3					7		6	
5	2							
				5	1	2		7
				9		4		
8								5
4	7	5		1				
		6		2		9	3	
						7		1

Sudoku 1

# Hard Sudoku

Sudoku 2

6			5		2		9	
				7		1		
			9		4	6	8	
	4				5			2
	8							
1								
	2	7						9
		9		3			6	
5					7			



## Answer to Puzzle on page 11

Houston	spouse	Jeff	Nann	Wendy
Atlanta	friend	Greg	Cash	Steve
Chicago	spouse	Sara	Barr	Mike
London	spouse	Fran	Wise	Ethan
Montreal	friend	Evan	Farrell	Doug
New York	friend	Louise	Dunn	Amy
Home City	Guest Relation	Guest Name	Last Name	First Name

## Sudoku Solutions on Page 17

	Barr	Cash	Dunn	Farrell	Nann	Wise	Evan	Fran	Greg	Jeff	Louise	Sara	friend	friend	friend	spouse	spouse	spouse	Atlanta	Chicago	Houston	London	Montreal	New York
Amy																								
Doug																								
Ethan																								
Mike																								
Steve																								
Wendy																								
Atlanta																								
Chicago																								
Houston																								
London																								
Montreal																								
New York																								
friend																								
friend																								
friend																								
spouse																								
spouse																								
spouse																								
Evan																								
Fran																								
Greg																								
Jeff																								
Louise																								
Sara																								

**Puzzle Mania**  
**answers on page 10**

First Name	Last Name	Guest Name	Guest Relation	Home City

Last night the Barbeque Hut was the site of a small gathering of friends for dinner. This gathering was very unusual however as most of the people in this group had never seen each other before. They'd all been friends for years as members of an email discussion list but had never met face to face. This gathering had been organized to give everyone a chance to meet and some had even traveled from afar to attend. Each person to attend also brought a guest – either a good friend or a spouse. The night was deemed a great success and they planned to do another such gathering the following year (oh, and the barbeque dinner was fantastic!). Determine the full name of each attendee, the name and relationship of each guest that was brought (couples were one man and one woman who shared the same last name), and the home city of each attendee.

1. Wendy, whose last name wasn't Farrell, didn't bring

- a friend. The person from New York had a last name of Dunn. Jeff didn't come with the person from Atlanta.
- Steve Cash didn't bring Evan. Louise was a friend but she didn't come with the person from Montreal.
  - The three people who brought spouses were the person who came from Houston, Ethan, and the one whose last name was Barr.
  - Fran was married to the person whose last name was Wise, but they weren't from Montreal. Ethan didn't come from Chicago.
  - The six people were represented by the one who brought Greg, the one from Chicago, Amy, the one from London, the one who brought Evan, and the one whose last name was Nann.
  - Mike brought Sara, his wife, but they weren't from Houston. Doug didn't bring Jeff but he was from Montreal.

# Newspaper

Find and circle all of the Newspaper words that are hidden in the grid.

The remaining letters spell a secret message.

D N A T S S W E N F I R I S S N O I H S A F  
 N A R T X E M O V I E S W N O T R P E C U B  
 O L I S N H E E P L S E D I S T E I V U N S  
 I T S E A E V D E I I T T E N E T T E L E N  
 T E E N D S M T I V N A R I X C R T N T Y M  
 P F O L V U T N E T L I C A R H O T T U T U  
 I E H E E E O R I U O L O E O N P L S R L L  
 R L F D R V E B C A A R L N S O E T A E C O  
 C Y A S T O I R I S T P I N T L R I N C U C  
 S T M B I R I S S T O R S A O O U S O C O E  
 B S I O S C E I I E U E E L L G P L Y R M L  
 U E L O E N F H P O N A C T P Y U H U O B L  
 S F Y K M I O O S I N O R G N M Z T H S I K  
 S I H S E L L I L I M G N I N E Z L E S E C  
 D L N D N I E D T I L I U I E E L A C W W A  
 S P A A T P A V C C K B S I E S E E N O R R  
 I D N I S E T S A O E T U H D E S H A R U S  
 S A C I H S T H O R S S E P H E A R N D T F  
 O S T R O P S C I N T E R V I E W S I R D C  
 W E A T H E R S S E N I S U B O U R F A N T  
 L A N O I T A N R E T N I C O M P U T E R S

ADVERTISEMENTS  
 ARTS  
 BOOKS  
 BUSINESS  
 CIRCULATION  
 CLASSIFIEDADS  
 COLUMNISTS  
 COLUMNS  
 COMICS  
 COMPUTERS  
 COOKING  
 CROSSWORD

CULTURE  
 EDITORIAL  
 ENTERTAINMENT  
 EVENTS  
 EXTRA  
 FAMILY  
 FASHION  
 FINANCE  
 HEADLINES  
 HEALTH  
 HOME  
 INSERTS

INTERNATIONAL  
 INTERVIEWS  
 LETTERS  
 LIFESTYLE  
 LOCAL  
 MOVIES  
 NEWSSTAND  
 OBITUARIES  
 OPINION  
 PEOPLE  
 POLITICS  
 PUBLISHER

PUZZLES  
 RACK  
 REPORTER  
 REVIEWS  
 SECTIONS  
 SPORTS  
 SUBSCRIPTION  
 TECHNOLOGY  
 TELEVISION GUIDE  
 TRAVEL  
 WEATHER

# Meet the Players...

From May 16, 2019...

WARSAW, POLAND – Blythewood's **Joyce Martin Hill** competed last week in the Palace Cup International Bridge Tournament in Warsaw, Poland. The team, made up of Hill and six others from around the world, took home a \$1,000 prize.

Hill began playing bridge at age 12 with her parents, who belonged to two bridge clubs. On a World Cruise in 2003, she took up duplicate bridge. "After that, I was hooked," Hill said. She currently has over 10,000 points, which puts her in the top .02% of competitive players. She is a Grand Life Master, has four national titles and a second place, won in Hawaii last November.



From Joyce Hill's Facebook page:

Mormon, philanthropist, reader, equestrian, volunteer, bridge&tennis player, mom, wife & grandma

## Murphy's Laws...

### Law of Mechanical Repair

After your hands become coated with grease your nose will begin to itch and/or you'll have to pee.

### Law of the Workshop

Any tool, when dropped, will roll or slide to the least accessible corner.

### Law of probability

The probability of being watched is directly proportional to the stupidity of your act.

### Law of the Alibi

If you tell the boss you were late for work because you had a flat tire, the very next morning you will have a flat tire.

### Law of Variation

If you change traffic lanes or lines at the store, the one you were in will start to move faster than the one you are in now.

### Law of the Result

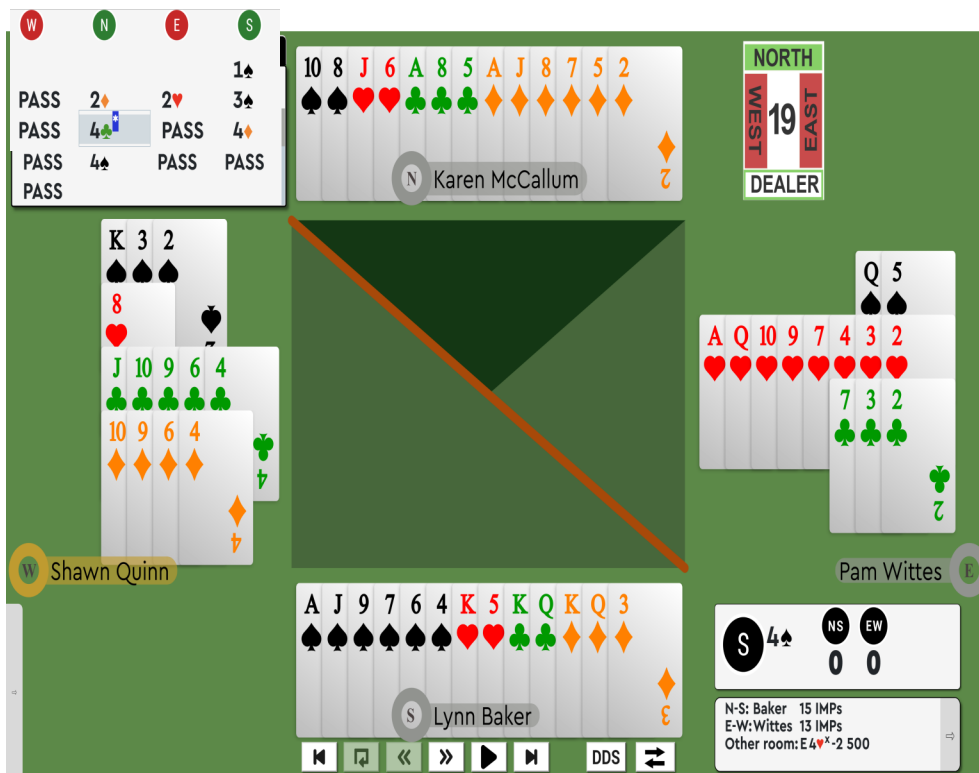
When you try to prove to someone that a machine won't work, it will.

### Wilson's Law

As soon as you find a product that you really like, they will stop making it.

### Law of the Telephone

When you dial a wrong number, you never get a busy signal.



In the bidding, players view 8 card suits differently. Some automatically jump the auction hoping to get in the way of the opponents. Some “walk the dog” and tread carefully.

Baker opened 1S. McCallum responded 2D. Wittes went slowly, vulnerable against not, and overcalled 2H. Baker jumped to 3S. McCallum cuebid her CA. Wittes passed and Baker bid 4D revealing her diamond values. McCallum bid 4S and everyone passed.

A diamond or heart lead can defeat 4S. Quinn led her singleton heart to Wittes’s ace. Wittes returned the HQ, covered by the king and ruffed by Quinn. Wittes likely intended for the queen to be suit preference for diamonds, however it looked to

Quinn like the mandatory return to force the king and bury the jack. Quinn did not imagine that her partner held eight hearts when she made a simple overcall and never rebid the suit. Quinn returned a club, Wittes followed with the seven and the contract, once beatable, was now cold.

Baker won the CA in dummy and played the S8. She should work out that with eight hearts to the AQT and KQx of spades, Wittes would have bid more than just 2H. Therefore, at this point, the spades are either 2-2 or West must hold at least one of the spade honors. Finessing the spade is no longer percentage and it could defeat the contract by giving West an entry while East still has a trump card. It is best to rise with the ace and if an honor does not fall, play a second trump and hope to see the queen and king. This would have worked well on this hand. Wittes played small and Baker finessed. Quinn won the king. Baker seized defeat from the jaws of victory!

Quinn could lead a diamond and Wittes could ruff for the setting trick. Perhaps she should have worked this out based on Baker’s 4D call showing some sort of fit, but she still could not envision her partner’s lopsided distribution. Quinn played the CT and once again, Wittes contributed the three and Baker was cold... Quinn now seizing defeat from the jaws of victory!

Baker won the CK. At this point she must play for spades to be 1-1 and lay down her ace to make the game. Baker has known from trick two what Quinn could not know. She knows that Wittes started with eight hearts. She had the information to know that the HQ was a suit preference signal. And Wittes, playing UDCA, made the situation clearer when she followed high/low to the club plays.

In the face of all this, Baker was apparently still convinced that East started the hand with three spades and played the DQ planning to overtake and finesse against the SQ with East.

Wittes ruffed and this time, defeat was seized from the jaws of victory and the game failed by a trick.

<https://vugraph.lovebridge.com/screen/usbc/2360?screen=frequency&board=19&round=2>

(Continued from page 14)

The screenshot shows a bridge game interface. At the top, there are tabs for BIDDING, TRICKS, INFO, and DDS. The bidding area shows West (W) and East (E) both passing, while North (N) has bid 1NT and South (S) has bid 4♥. The hand distribution is shown for North (N) and South (S). North's hand is: ♠ J 6 10 8, ♥ A J 8 7 5 2, ♦ A 8 5, ♣ . South's hand is: ♠ K 5, ♥ A J 9 7 6 4, ♦ K Q 3, ♣ K Q. The dealer is North. The score is 19 for West and 0 for East. The player names are Disa Eythorsdottir (West), Janice Molson (East), and Emma Kolesnik (South). The interface also shows a trick count of 4♥ and a double (DBL) button.

At the other table in this match, Molson/Disa played in 4HX E/W.

Kolesnik led the DK ruffed by declarer. Molson led the S5, Kolesnik grabbing her ace. The DQ was ruffed. The SQ went to the SK to finesse against the HK. Kolesnik won her HK and tapped declarer with another diamond.

Molson played the HA felling trump and played a club won by Kolesnik's queen.

Kolesnik led the SJ ruffed by Molson. Another club was led to Kolesnik's king.

Molson claimed 8 tricks ... contract failing by two for -500.

11 IMPs to Wittes

## Anna Gudge posted:

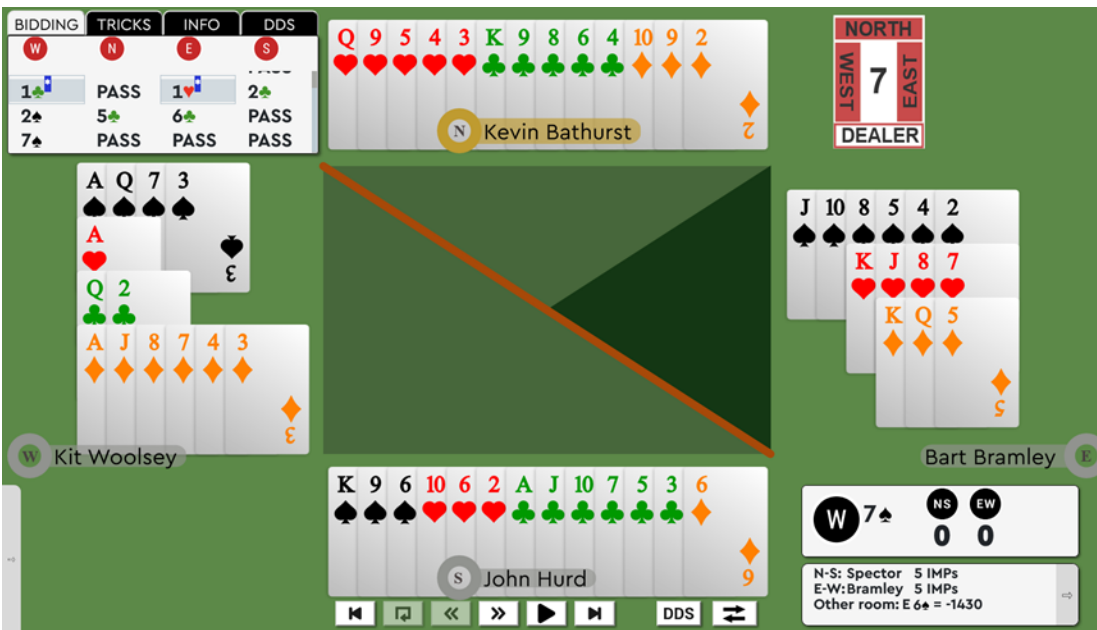
There is to be a free BBO Tournament in memory of Miguel Reygadas on 16 October. So do save the date and look for registration details on BBO

Grand life master Miguel Reygadas died Sept 25. He was 75. Born April 18 1946, Miguel was a loving father and great friend.

He began playing bridge at 15 and demonstrated a great facility for the game. Together with Gonzalo Herrera they represented Mexico in the first World Championships in 1968. Soon after this, Dr Rosenkrans invited him to play on his team internationally. From 1978 until his death he represented Mexico in 8 Olympics and the Bermuda Bowl.. He also played in many international games as a member of different teams.

Always a gentleman at the table, he was kind, considerate and respectful of his opponents. He will be greatly missed by the Mexican bridge community. He is survived by his daughter, Inéz.

More information as it is available.



Open USA2 had two significant swings in the 1st segment.

Bramley/Woolsey perpetrated both when they bid and made 7S while their counterparts at the other table, Kranyak and Wolpert stopped in 6S.

On Board 7, Woolsey opened 1C (art., strong) and Bramley responded 1H (positive with 4+ spades). Hurd overcalled 2C and Woolsey showed his fit by bidding 2S. Bathurst jumped to 5C, taking

away any opportunity to explore slowly. Bramley cued 6C and with great spades and both red aces, Woolsey jumped to 7S. Bathurst led the H3. Bramley won, trumped a club in dummy and finessed the spades for 13 tricks.

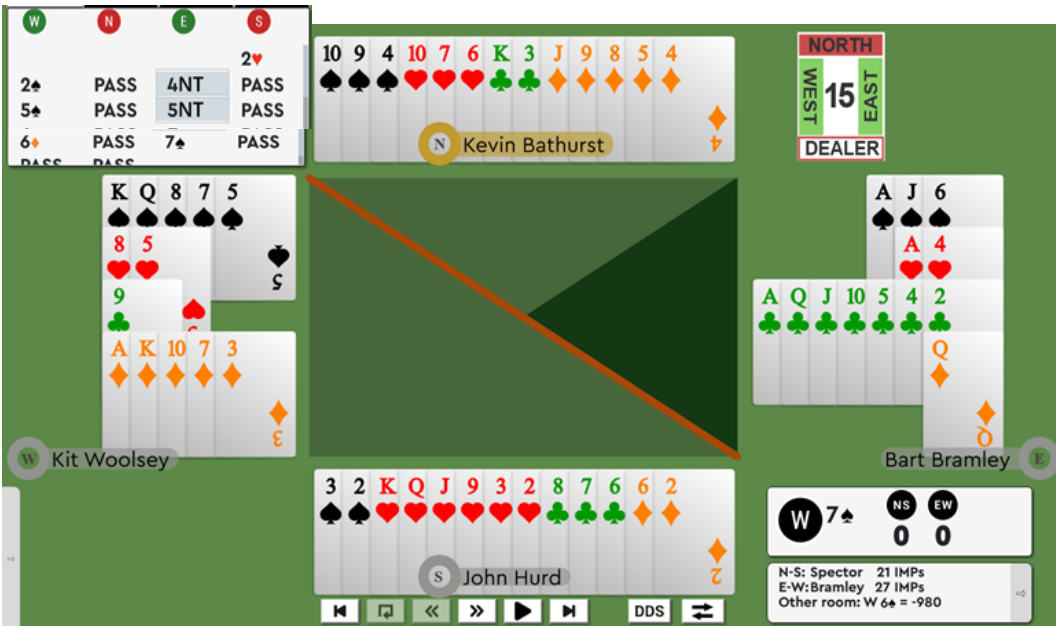
W	N	E	S
1♦	PASS	1♣	2♣
4♣	PASS	6♣	PASS
6♦	PASS	6♣	PASS
PASS	PASS		

Kranyak      Becker      Wolpert      Kamil

In the other room there was less interference and Kranyak/Wolpert stopped in 6S making twelve tricks when declarer won the HA and laid down the SA to avoid any possibility of a diamond ruff.

Bidding a grand slam on a finesse for the trump king is not routine. But here Bramley/Woolsey were forced to guess at a high level and, based on South's 2C bid, the finesse was favored to work. 13 IMPs to Bramley

On Board 15, Bathurst opened 2H with the South hand, Woolsey overcalled 2S and Bramley took over. 4NT was RKC. 5S showed two keycards and the SQ. 5NT asked for specific kings. When Woolsey showed the DK, Bramley knew his red suit losers were covered.



Woolsey was likely to hold a singleton club, and if so, Bramley had the entries to ruff out the CK. If Woolsey held a doubleton club, the finesse for the king would be through the non-preempter's hand. Bathurst led the H6. Woolsey won the HA and played the SA and a spade to the king. Woolsey led a club to the ace and trumped a club, felling the king to take thirteen tricks. At the other table, Kranyak/Wolpert stopped in 6S. Kamil opened 2H and Kranyak bid 3H showing

spades and a minor. Wolpert cuebid 4H, but eventually settled in 6S. Declarer won the HA, drew trumps and played the CA followed by the CQ on which he discarded a heart to take twelve tricks. 11 IMPs to Bramley

In the Palmer USA2, Cole/Rimstedt (playing on the Cole team) duplicated the Bramley/Woolsey auction and gained 11 IMPs when Meltzer/Tebha of the Howard team settled for 6S in the other room. In the Palmer USA1 Final (Baker vs. Wittes), both pairs played 6S taking twelve tricks for a push board.



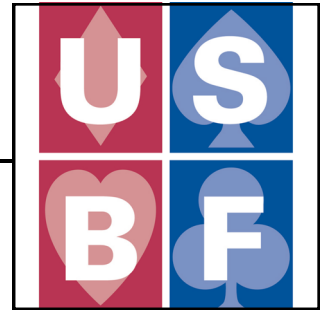
2	9	3	4	6	8	7	5	1
1	8	6	7	2	5	9	3	4
4	7	5	3	1	9	6	2	8
8	6	1	2	7	4	3	9	5
7	5	2	8	9	3	4	1	6
9	3	4	6	5	1	2	8	7
5	2	7	1	3	6	8	4	9
3	1	8	9	4	7	5	6	2
6	4	9	5	8	2	1	7	3

5	6	8	4	9	7	2	3	1
4	1	9	2	3	8	5	6	7
3	2	7	1	5	6	8	4	9
1	5	6	3	2	9	4	7	8
9	8	2	7	4	1	3	5	6
7	4	3	8	6	5	9	1	2
2	7	5	9	1	4	6	8	3
8	9	4	6	7	3	1	2	5
6	3	1	5	8	2	7	9	4

# Sudoku Answers

Answer to Sudoku 1

Answer to Sudoku 2



## USBF Supporting Membership

If you don't want to play in the USBF Championships that choose teams to represent the USA in the World Bridge Federation Championships, but do want to aid our events, a **Supporting Membership** can be the perfect way for you to be involved.

A Supporting Membership is \$25 for one year (\$75 for 3 years) and your donation will be used to cover inevitable expenses: attorney fees, accounting fees, website support services, tournament directors, insurance, WBF dues, and vugraph operators.

The USBF is an **all-volunteer** organization.

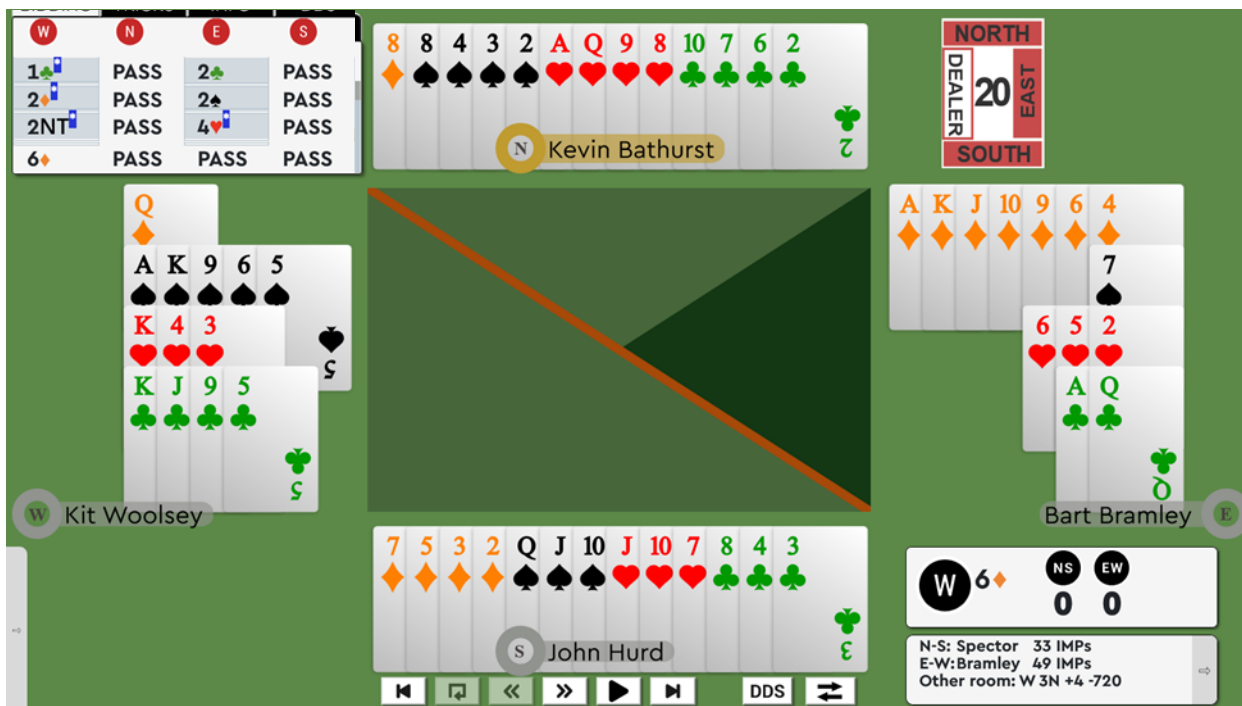
Our meetings are by conference call and at NABCS. Board members and the organization's officers are not compensated for meetings, travel, or hotel expenses.

We hope you will join us.



Play in tempo.  
So they say.  
That will give  
The least away!





Bramley/Woolsey found a cold 6D contract on Board 20 from the second segment of the USA2 finals match. 6D must be declared from the West hand to be successful!! If it's declared from East, the hand actually holding the diamonds, South can lead the HJ and the defense will take the first three tricks. That fate befell Geiger/Simpson in the Palmer USA2 Semifinal.

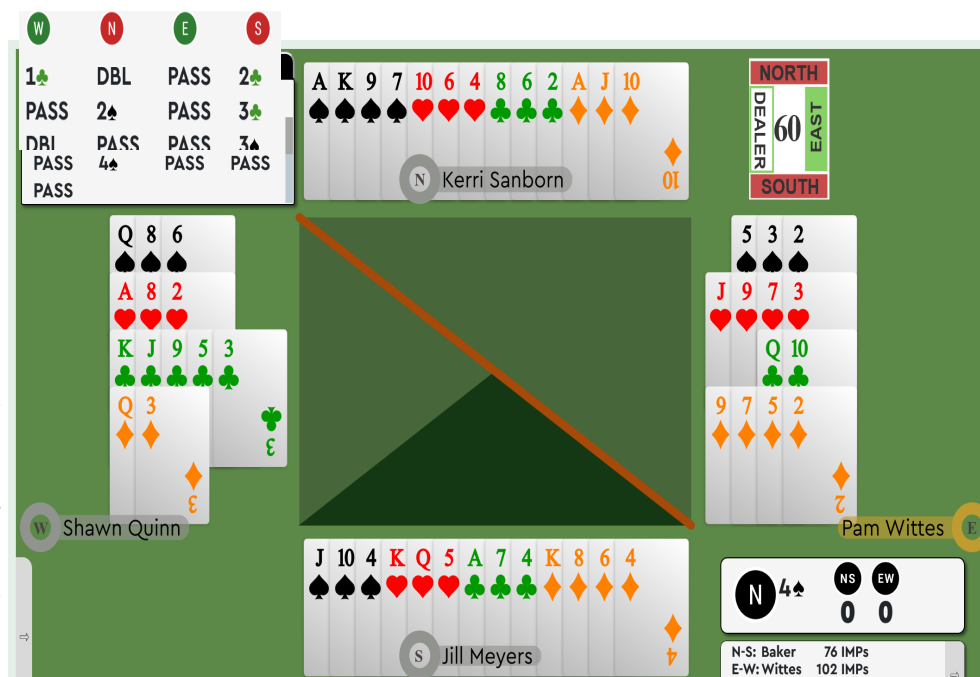
<https://vugraph.lovebridge.com/screen/usbc/2219?screen=frequency&board=20&round=2>

Woolsey opened 1C (strong). Bramley responded 2C showing a game forcing hand with 5+ diamonds and no four card major. Woolsey's 2D bid was a relay. Bramley's 2S bid showed 0-2 spades. 2NT was a relay. 4H showed 1-3-7-2 distribution with five controls (aces are 2 controls and kings are 1 control). Woolsey placed the contract in 6D. The opening lead was the C6, and Woolsey claimed all the tricks.

At the other table, Spector/Wolpert East/West played in 3NT and took all the tricks when Weichsel, North, led his singleton diamond. 12 IMPs to Bramley.

On Board 60, only one pair found the magic Moysian spade game. The NT game fails because the opponents can score 4 clubs and the HA.

Sanborn/Meyers did really well to get to 4S on the auction shown. Wittes led the CQ. Sanborn won the ace and finessed against the SQ. Quinn covered and Sanborn won her ace. Sanborn knocked out the HA; Quinn cashed two clubs and exited with a trump. Sanborn won the ST and led a diamond to the jack. She drew the last trump, cashed the DA and DT and claimed.



<https://vugraph.lovebridge.com/screen/usbc/2360?screen=frequency&board=60&round=4>