



Volume 11, Issue 5
May 1, 2017

UNITED STATES BRIDGE CHAMPIONSHIPS

“Trials” and Tribulations

Results: USA1

| # | TEAM | TOTAL | SET #1 | SET #2 | SET #3 | SET #4 | Penalties |
|----|-----------|-------|--------|--------|--------|--------|-----------|
| 3 | Fireman | 181 | 23 | 37 | 44 | 77 | |
| 14 | Ivatury | 103 | 31 | 38 | 13 | 21 | |
| 4 | Fleisher | 118 | 29 | 14 | 43 | 32 | |
| 13 | Harris | 116 | 9 | 66 | 9 | 32 | |
| 5 | Rosenthal | 70 | 4 | 35 | 20 | 11 | |
| 12 | Robinson | 89 | 10 | 33 | 25 | 21 | |
| 6 | Dwyer | 87 | 14 | 40 | 33 | A43 | |
| 11 | Jacobs | 66 | 25 | 15 | 26 | A34 | |
| 7 | Mahaffey | 93 | 9 | 38 | 19 | 27 | |
| 10 | Wold | 143 | 42 | 22 | 52 | 27 | |
| 8 | Meltzer | 152 | 30 | 57 | 38 | 27 | |
| 9 | Miller | 79 | 7 | 20 | 30 | 22 | |

Results: USA2

| # | TEAM | TOTAL | SET #1 | SET #2 | SET #3 | SET #4 |
|----|--------|-------|--------|--------|--------|--------|
| 15 | Dinkin | 57 | 16 | 5 | 21 | 15 |
| 16 | Kent | 57 | 13 | 10 | 21 | 13 |
| 18 | Dinkin | 60 | 28 | 19 | 12 | 1 |
| 19 | Simson | 36 | 3 | 2 | 12 | 19 |
| 20 | Kent | 31 | 12 | 5 | 0 | 14 |
| 17 | Simson | 84 | 24 | 3 | 32 | 25 |



USBF President

Marty Fleisher
USBF

Vice President

Josh Parker

USBF COO & Secretary

Jan Martel

USBF CFO

Stan Subeck

Directors - USBC

Chris Patrias

Sol Weinstein

McKenzie Myers

Jeanne Van Den Meiracker

Operations Manager

McKenzie Myers

Appeals Administrator

Suzi Subeck, Chairman

Bill Arlinghaus

Martha Katz

Appeals Panel:

David Berkowitz

Huib Bertens

Bart Bramley

Tom Carmichael

Gary Cohler

Ish Del Monte

Mark Feldman

Ron Gerard

Fred Gitelman

Bob Hamman

Geoff Hampson

Mike Kamil

Oren Kriegel

Chip Martel

Beth Palmer

Pepsi Pszczola

Eric Rodwell

Debbie Rosenberg

Michael Rosenberg

Kerri Sanborn

Aaron Silverstein

Danny Sprung

Lew Stansby

Adam Wildavsky

VuGraph Organizers

Jan Martel

Bulletin Editor

Suzi Subeck

Photographer

Peg Kaplan

Local Hospitality Chairs

Lisa Berkowitz

Martha Katz

Into the Head-up USA1 ... New RR USA2...

Board 4
 Dealer: W
 All Vul.

♠ J94
 ♥ AQ92
 ♦ J86543
 ♣

♠ AKQT32
 ♥ KJ76
 ♦ A9
 ♣ A

♠ 875
 ♥ T854
 ♦ T
 ♣ QJ764

♠ 6
 ♥ 3
 ♦ KQ72
 ♣ KT98532



| West | North | East | South |
|--------|----------|---------|-----------|
| Demuy | Chan | Kranyak | Sorkin |
| 2C | 2D | Double | 5D |
| 6D | Pass | 6H | Pass |
| 6S | All Pass | | |
| Henner | Wolpert | Ivatury | Fireman |
| 1S | Pass | Pass | 2C |
| 3S | Pass | 4S | All Pass |
| Morgan | Pepsi | Barron | Rosenberg |
| 2C | Pass | 2H | 3C |
| Pass | Pass | Double | Pass |
| 3S | Pass | 3NT | All Pass |
| Moss | Lo | Grue | Liu |
| 2C | Pass | 2D | 3C |
| 3S | Pass | 4S | All Pass |

Fireman/Ivatury Harris/Fleisher

In at least two of the matches, Board 4 created a 13 IMP swing. In Fireman/Ivatury, Chan made a brave vulnerable 2D overcall in a strong auction to create maximum pressure on his opponents to find the right spot. Kranyak doubled and Sorkin upped the ante by jumping to the five level. Demuy held all the controls with no room to explore. He took the high road and drove to the spade slam. Chan led a diamond; Dummy hit; and Demuy had hope. If the hearts behaved perfectly, this could work. Looking at the hands, it is apparent that hearts lie quite badly. Vince pulled trump, ruffed a diamond to dummy and crossed his fingers for Qx of hearts in the pocket. When the jack lost to the queen, it was over. -100 E/W.

Interestingly, in the other room, the opponents almost missed game. Henner chose the benign opening bid of 1S. Ivatury, holding an ugly three count, passed. Fireman certainly had his balance... but he probably regrets bidding now. Crystal jumped to 3S over the 2C bid, and Uday came to life and bid game. Unlike her counterpart, Henner was happy with the heart position since game was safe and slam would fail. +650 East/West.

In Harris/Fleisher, Moss and Grue reached the spade game as did Henner and Ivatury. Moss chose a strong 2C opener and with no direct diamond overcall, reaching game was easy.

At their other table, however, Barron found himself in a difficult position. He likely intended his double as penalty. When Morgan pulled it without having bid his spades directly, Barron could not easily envision his partner's hand. He had a dilemma. 3NT or 4S? He chose 3NT.

Rosenberg led the DQ and there were never more than eight tricks: six spades and two outside aces.

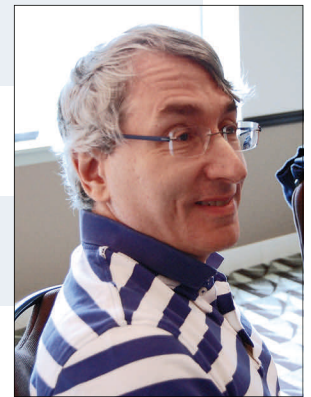
At one table in the Miller/Meltzer match, Jeff Miller arrived in five spades...

(continued on page 4)

Teams Entered... listed in RR seeding order

"TRIALS" AND TRIBULATIONS

| | | |
|------------------------|--|--|
| Nickell Bye to QF | Frank Nickell, Capt Jeff Meckstroth Bobby Levin | Ralph Katz Eric Rodwell Steve Weinstein |
| Diamond Bye to QF | John Diamond, Capt Justin Lall Eric Greco | Brian Platnick Kevin Bathurst Geoff Hampson |
| Fleisher Bye to R16 | Martin Fleisher, Capt Brad Moss Michael Rosenberg | Chip Martel Joe Grue Jacek Pszczola |
| Fireman Bye to R16 | Paul Fireman, Capt John Hurd John Kranyak | Gavin Wolpert Joel Wooldridge Vincent Demuy |
| Rosenthal | Andrew Rosenthal, Capt Chris Willenken David Berkowitz | Aaron Silverstein Eldad Ginossar Alan Sontag |
| Meltzer | Rose Meltzer, Capt Steve Garner Bart Bramley | Nikolay Demirev Ron Smith Robert Hamman |
| Mahaffey | Jim Mahaffey, Capt Neil Chambers Matthew Granovetter | Sam Lev John Schermer Russell Ekeblad |
| Dwyer | Kevin Dwyer, Capt Billy Cohen Michael Kamil | Roger Lee Gary Cohler Michael Becker |
| Wold | Eddie Wold, Capt Marc Jacobus Chris Compton | Michael Levine Mike Passell David Grainger |
| Simson | Doug Simson, Capt JoAnna Stansby | Jeff Aker Lew Stansby |
| Miller | Jeffrey Miller, Capt Reese Milner Joshua Stark | William Engel Hemant Lall |
| Robinson | Steve Robinson, Capt Kit Woolsey Bill Pollack | Peter Boyd Fred Stewart Ron Rubin |
| Jacobs | George Jacobs, Capt Dick Bruno David Lehman | Claude Vogel Jeffrey Schuett Richard Melson |
| Harris | Martin Harris, Capt Ai-Tai Lo Jay Barron | Jacob Morgan Howard Liu |
| Ivatury | Uday Ivatury, Capt Lapt Chan | Christal Henner Jon Sorkin |
| Dinkin | Sam Dinkin, Capt W. Thomas Reynolds | Michael Shuster Lance Kerr |
| Kent | Robert Kent Brenda Pugsley | Ellen Kent Paul Pugsley |



The only source of
knowledge is
experience.
Albert Einstein



| | | | |
|--------|---------|-------|----------|
| West | North | East | South |
| Miller | Demirev | Stark | Meltzer |
| 2C | Pass | 2D | 3C |
| 3S | Pass | 4S | Pass |
| 5C | Pass | 5S | All Pass |

The opening was a trump and 5S made. Interestingly, the somewhat obscure lead of the HA from AQ92 will actually defeat even 4S. South can ruff the second heart, give partner a club ruff, and score the HQ later in the hand.

Stark didn't know how right he was when after the auction, he lamented, "I wish I'd bid a negative 2H!"

Board 17
 Dealer: N
 None Vul.

♠ JT2
 ♥ AK75
 ♦ AT8642
 ♣

♠ AKQ83
 ♥ QJ942
 ♦ K
 ♣ 87

♠ 974
 ♥ T63
 ♦ 3
 ♣ AK6542

♠ 65
 ♥ 8
 ♦ QJ975
 ♣ QJT93

Board 17 produced a variety of swings, the largest of which occurred in the Harris/Fleisher match.

| | | | |
|--------|---------------------|----------|--------|
| Barron | Fleisher | Liu | Martel |
| | 1D (5+D or 4-4-4-1) | Pass | 4D |
| Double | 5D | Double | Pass |
| 5H | Double | All Pass | |

| | | | |
|--------|---------------------|-----------|--------|
| Pepsi | Morgan | Rosenberg | Harris |
| | 2D (8-15 D+4 crd M) | Pass | 5D |
| Double | All Pass | | |

Harris/Fleisher

In the Open Room, 5HX could have been defeated by cashing the first three tricks. Marty Fleisher made a "newspaper play." He wanted to score more than three tricks. Accordingly, underled his DA going for a club ruff. Unfortunately for Marty, declarer held the singleton king of diamonds. Fleisher scored his two

high trumps but the contract succeeded.

In the Closed Room, Morgan and Harris, playing Harris's home brew strong club, had a perfect bid for the N hand. (see above) Harris knew exactly what his partner held and how high to bid. 5DX is proof with the diamond position: 1-1 with the K onside. Adding icing to the cake, the opening 2D bid placed the contract with North, generating the lead of a club from East as opposed to the obvious spade from West ... making 6 ... +650 in both rooms for 16 IMPs to Harris → P11

Hospitality Information...



The hospitality suite for the 2017 Open USBC is room 2321, one level up from the playing rooms. Our wonderful hostess, Lisa Berkowitz, and her co-chair, Martha Katz, will serve breakfast each day from 8:00-10:30, as well as lunch starting on Sunday from 2:00-4:00. **BUT: Sit outs are encouraged to come as early as 1pm for lunch to avoid overcrowding the suite. Everyday, lunch will be served both in 2321 and 1321 to handle the expected overflow.**

The hospitality suite will be open for Vugraph, casual chit chat, drinks & snacks during the rest of the playing hours and for a short time after the end of the day.

The "Players' Break Room" (aka Jan's office) is room 1321. It will be available for the entire tournament. You can find coffee, soft drinks and snacks in that room while you wait for slow teammates to finish playing.

I don't get people who stumble into mirrors. They need to watch themselves.
 What do dogs do after they finish obedience school? They get their masters.
 I once got into so much debt that I couldn't even afford my electricity bills, they were the darkest times of my life.
 Two hats were hanging on a hat rack in the hallway. One hat says to the other, 'You stay here, I'll go on a head.'
 I knew a guy who collected candy canes, they were all in mint condition.
 I was going to buy a book on phobias, but I was afraid it wouldn't help me.
 I saw a beaver movie last night, it was the best dam movie I've ever seen.
 I really wanted a camouflage shirt, but I couldn't find one.
 When the window fell into the incinerator, it was a pane in the ash to retrieve.
 Whenever there is an earthquake the geologists are always quick to find fault.



Tournament Schedule (continued on page 7)

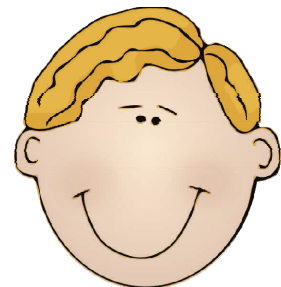
| | | | |
|--|----------|---|---|
| SUNDAY | APRIL 30 | 9:45 AM | (R of 64 ... see page 6) |
| SUNDAY | APRIL 30 | 10:00 - 12:10 12:25 - 2:35 3:45 - 5:55 6:10 - 8:20 | SEGMENT 1 BOARDS 1-15 SEGMENT 2 BOARDS 16-30 70 MINUTE LUNCH BREAK SEGMENT 3 BOARDS 1-15 SEGMENT 4 BOARDS 16-30 |
| MONDAY | MAY 1 | 10:00 - 12:10 12:25 - 2:35 3:45 - 5:55 6:10 - 8:20 | SEGMENT 5 BOARDS 1-15 SEGMENT 6 BOARDS 16-30 70 MINUTE LUNCH BREAK SEGMENT 7 BOARDS 1-15 SEGMENT 8 BOARDS 16-30 |
| QUARTER-FINAL & USA2 ROUND OF 32 (8 USA2 TEAMS) | | | |
| TUESDAY | MAY 2 | 10:00 - 12:10 12:25 - 2:35 3:45 - 5:55 6:10 - 8:20 | SEGMENT 1 BOARDS 1-15 SEGMENT 2 BOARDS 16-30 70 MINUTE LUNCH BREAK SEGMENT 3 BOARDS 1-15 SEGMENT 4 BOARDS 16-30 |
| WEDNESDAY | MAY 3 | 10:00 - 12:10 12:25 - 2:35 3:45 - 5:55 6:10 - 8:20 | SEGMENT 5 BOARDS 1-15 SEGMENT 6 BOARDS 16-30 70 MINUTE LUNCH BREAK SEGMENT 7 BOARDS 1-15 SEGMENT 8 BOARDS 16-30 |
| SEMI-FINAL & USA2 ROUND OF 16 (8 USA2 TEAMS) | | | |
| THURSDAY | MAY 4 | 10:00 - 12:10 12:25 - 2:35 3:45 - 5:55 6:10 - 8:20 | SEGMENT 1 BOARDS 1-15 SEGMENT 2 BOARDS 16-30 70 MINUTE LUNCH BREAK SEGMENT 3 BOARDS 1-15 SEGMENT 4 BOARDS 16-30 |
| FRIDAY | MAY 5 | 10:00 - 12:10 12:25 - 2:35 3:45 - 5:55 6:10 - 8:20 | SEGMENT 5 BOARDS 1-15 SEGMENT 6 BOARDS 16-30 70 MINUTE LUNCH BREAK SEGMENT 7 BOARDS 1-15 SEGMENT 8 BOARDS 16-30 |
| FINAL & USA2 QUARTERFINAL (6 USA2 TEAMS) | | | |
| SATURDAY | MAY 6 | 10:00 - 12:10 12:25 - 2:35 3:45 - 5:55 6:10 - 8:20 | SEGMENT 1 BOARDS 1-15 SEGMENT 2 BOARDS 16-30 70 MINUTE LUNCH BREAK SEGMENT 3 BOARDS 1-15 SEGMENT 4 BOARDS 16-30 |
| SUNDAY | MAY 7 | 10:00 - 12:10 12:25 - 2:35 3:45 - 5:55 6:10 - 8:20 | SEGMENT 5 BOARDS 1-15 SEGMENT 6 BOARDS 16-30 70 MINUTE LUNCH BREAK SEGMENT 7 BOARDS 1-15 SEGMENT 8 BOARDS 16-30 |

USA2 Round of 64

Time
SUNDAY, APRIL 30TH
 (NOTE: EACH MATCH WILL HAVE A UNIQUE SET OF BOARDS 1-28)
 IF ALL 3 TEAMS CONTINUE ON MONDAY, THIS SCHEDULE WILL REPEAT
 BUT - THERE WILL BE NO SCORE COMPARISON ALLOWED AFTER THE 7TH SEGMENT (AT 5:55)
 IF ONE TEAM IS QUALIFIED AT THE END OF SUNDAY, THE ROUND OF 16 SCHEDULE WILL BE USED ON MONDAY

| | | | |
|----------------------------|----|--------|-------|
| 10:00-11:00 | C1 | 1 vs 2 | 1-7 |
| | C2 | 2 vs 3 | |
| | C3 | 3 vs 1 | |
| 11:10-12:10 | C1 | 1 vs 3 | 1-7 |
| | C2 | 2 vs 1 | |
| | C3 | 3 vs 2 | |
| SHORT BREAK FOR COMPARISON | | | |
| 12:25-1:25 | C1 | 1 vs 3 | 8-14 |
| | C2 | 2 vs 1 | |
| | C3 | 3 vs 2 | |
| 1:35-2:35 | C1 | 1 vs 2 | 8-14 |
| | C2 | 2 vs 3 | |
| | C3 | 3 vs 1 | |
| 70 MINUTE LUNCH BREAK | | | |
| 3:45-4:45 | C1 | 1 vs 3 | 15-21 |
| | C2 | 2 vs 1 | |
| | C3 | 3 vs 2 | |
| 4:55-5:55 | C1 | 1 vs 2 | 15-21 |
| | C2 | 2 vs 3 | |
| | C3 | 3 vs 1 | |
| SHORT BREAK FOR COMPARISON | | | |
| 6:10-7:10 | C1 | 1 vs 2 | 22-28 |
| | C2 | 2 vs 3 | |
| | C3 | 3 vs 1 | |
| 7:20-8:20 | C1 | 1 vs 3 | 22-28 |
| | C2 | 2 vs 1 | |
| | C3 | 3 vs 2 | |

The leading team will qualify for the Round of 32 if it is ahead in both of its matches by 42 or more IMPs, either at the end of day 1 or at the half on day 2



My dad always beats me in cards, but he always seems to lose at the horses...
 Perhaps it's because he doesn't get to shuffle the horses!!

No Electronic Devices are Permitted in the Playing Area. This applies to players AND kibitzers. Severe penalties will be assessed for violation of this rule. Please turn off all cell phones and check them at the door.
The USBF reserves the right to wand anyone entering the playing field.



| USA2 SEMI-FINAL | | | |
|-----------------|--------|---|---|
| MONDAY | MAY 8 | 10:00 - 12:10 12:25 - 2:35 3:45 - 5:55 6:10 - 8:20 | SEGMENT 1 BOARDS 1-15 SEGMENT 2 BOARDS 16-30 70 MINUTE LUNCH BREAK SEGMENT 3 BOARDS 1-15 SEGMENT 4 BOARDS 16-30 |
| TUESDAY | MAY 9 | 10:00 - 12:10 12:25 - 2:35 3:45 - 5:55 6:10 - 8:20 | SEGMENT 5 BOARDS 1-15 SEGMENT 6 BOARDS 16-30 70 MINUTE LUNCH BREAK SEGMENT 7 BOARDS 1-15 SEGMENT 8 BOARDS 16-30 |
| USA2 FINAL | | | |
| WEDNESDAY | MAY 10 | 10:00 - 12:10 12:25 - 2:35 3:45 - 5:55 6:10 - 8:20 | SEGMENT 1 BOARDS 1-15 SEGMENT 2 BOARDS 16-30 70 MINUTE LUNCH BREAK SEGMENT 3 BOARDS 1-15 SEGMENT 4 BOARDS 16-30 |
| THURSDAY | MAY 11 | 10:00 - 12:10 12:25 - 2:35 3:45 - 5:55 6:10 - 8:20 | SEGMENT 5 BOARDS 1-15 SEGMENT 6 BOARDS 16-30 70 MINUTE LUNCH BREAK SEGMENT 7 BOARDS 1-15 SEGMENT 8 BOARDS 16-30 |



Round Robin

The 2017 USBC Round Robin will be a 2-day complete Round Robin, with 8 board matches, scored using the **USBF 8 board Victory Point scale**.

SCORE SUBMISSION

After each match, you must turn in a form showing your score (in IMPs) for the match; please enter the IMPs for each team, not the net IMPs. If you have time to confirm the score with your opponent before submitting it, please do so, but if you don't have time, turn the score in anyway. Write your lineup for the next match on the back of the score ticket, and turn in the score ticket to receive your assignment for the next match.

SEQUESTERED MATCHES

The final 2 matches on Saturday will have the Closed Room sequestered. One pair on your team must play both matches in the Closed Room. No score comparison is allowed during the 2-match clump. For the first sequestered match, the NS pair at each table will be asked to complete a score sheet & have the EW pair verify that it is correct. The score sheets will be collected and entered into the computer by the time you finish the second match. Those scores will be posted on a wall in the Players' Break Room. You will be asked to confirm that the first match score is correct when you turn in your score for the final match. We hope that this procedure will help speed up the determination of the qualifiers.

| Margin | Winner | Loser | Margin | Winner | Loser | Margin | Winner | Loser |
|--------|--------|-------|--------|--------|-------|--------|--------|-------|
| 0 | 10 | 10 | 15 | 15.23 | 4.77 | 30 | 18.37 | 1.63 |
| 1 | 10.44 | 9.56 | 16 | 15.50 | 4.50 | 31 | 18.53 | 1.47 |
| 2 | 10.86 | 9.14 | 17 | 15.75 | 4.25 | 32 | 18.68 | 1.32 |
| 3 | 11.27 | 8.73 | 18 | 16.00 | 4.00 | 33 | 18.83 | 1.17 |
| 4 | 11.67 | 8.33 | 19 | 16.23 | 3.77 | 34 | 18.97 | 1.03 |
| 5 | 12.05 | 7.95 | 20 | 16.46 | 3.54 | 35 | 19.11 | 0.89 |
| 6 | 12.42 | 7.58 | 21 | 16.68 | 3.32 | 36 | 19.24 | 0.76 |
| 7 | 12.77 | 7.23 | 22 | 16.90 | 3.10 | 37 | 19.37 | 0.63 |
| 8 | 13.12 | 6.88 | 23 | 17.11 | 2.89 | 38 | 19.50 | 0.50 |
| 9 | 13.45 | 6.55 | 24 | 17.31 | 2.69 | 39 | 19.62 | 0.38 |
| 10 | 13.78 | 6.22 | 25 | 17.50 | 2.50 | 40 | 19.74 | 0.26 |
| 11 | 14.09 | 5.91 | 26 | 17.69 | 2.31 | 41 | 19.85 | 0.15 |
| 12 | 14.39 | 5.61 | 27 | 17.87 | 2.13 | 42 | 19.95 | 0.05 |
| 13 | 14.68 | 5.32 | 28 | 18.04 | 1.96 | 43 | 20 | 0 |
| 14 | 14.96 | 5.04 | 29 | 18.21 | 1.79 | | | |

**USBF
8 Board
VP Scale**

| | | | | | | | | |
|---|---|---|---|---|---|---|---|---|
| 2 | | 8 | 7 | | 9 | 3 | | 1 |
| | 3 | | | | 2 | | | |
| | 5 | | | 4 | | 7 | 2 | 8 |
| 5 | 1 | 2 | | 7 | 3 | | | |
| 9 | | | 2 | | | | | |
| | 8 | 3 | | | | | | |
| | | | 1 | 7 | | | | 6 |
| | 2 | | | 8 | | 7 | | |
| 4 | | 1 | 6 | | | | | |

Sudoku 1

Sudoku

Sudoku 2

| | | | | | | | | |
|---|---|---|---|---|---|---|---|---|
| | | | 2 | | | | | 8 |
| | 5 | | | 8 | | | 9 | |
| | | | | 6 | | 2 | | |
| | 1 | | | | | | | 9 |
| 6 | | 8 | | | | 5 | 7 | |
| | | | 1 | | 2 | 4 | | |
| 5 | 3 | | | | | | | |
| | | | | | | | 4 | |
| | | | 2 | | 3 | 9 | 6 | |

Answers to Puzzle No Peeking!

Sudoku 2 Solution

| | | | | | | | | |
|---|---|---|---|---|---|---|---|---|
| 1 | 4 | 2 | 8 | 3 | 9 | 6 | 5 | 7 |
| 8 | 6 | 7 | 5 | 2 | 1 | 9 | 4 | 3 |
| 5 | 3 | 9 | 7 | 4 | 6 | 8 | 1 | 2 |
| 9 | 7 | 3 | 1 | 5 | 2 | 4 | 8 | 6 |
| 6 | 2 | 8 | 4 | 9 | 3 | 5 | 7 | 1 |
| 4 | 1 | 5 | 6 | 7 | 8 | 3 | 2 | 9 |
| 7 | 8 | 1 | 9 | 6 | 4 | 2 | 3 | 5 |
| 2 | 5 | 6 | 3 | 8 | 7 | 1 | 9 | 4 |
| 3 | 9 | 4 | 2 | 1 | 5 | 7 | 6 | 8 |

Sudoku 1 Solution

| | | | | | | | | |
|---|---|---|---|---|---|---|---|---|
| 4 | 7 | 1 | 6 | 2 | 5 | 8 | 9 | 3 |
| 3 | 2 | 6 | 4 | 9 | 8 | 1 | 7 | 5 |
| 8 | 9 | 5 | 1 | 3 | 7 | 2 | 4 | 6 |
| 7 | 8 | 3 | 5 | 6 | 4 | 9 | 1 | 2 |
| 9 | 6 | 4 | 2 | 8 | 1 | 5 | 3 | 7 |
| 5 | 1 | 2 | 9 | 7 | 3 | 6 | 8 | 4 |
| 1 | 5 | 9 | 3 | 4 | 6 | 7 | 2 | 8 |
| 6 | 3 | 7 | 8 | 1 | 2 | 4 | 5 | 9 |
| 2 | 4 | 8 | 7 | 5 | 9 | 3 | 6 | 1 |

Puzzle Page ...

Find a 4-letter word for each blank below so that when added, two new words (sharing the same middle word) are created. What is each word?

POST _____ DOWN
 FAIR _____ PEN
 CAKE _____ WAY
 BASE _____ GAME
 BACK _____ WAY
 BROKE _____ TOWN

Answers to Puzzle:

MARK
 Postmark - Markdown
 PLAY
 Fairplay - Playpen
 WALK
 Cakewalk - Walkway
 BALL
 Baseball - Ballgame
 DOOR
 Backdoor - Doorway
 DOWN

To solve the puzzle read the riddle and answer the clues below to find each word. Then place the letters on the lines below. Each letter must be placed on a line marked by the same number. When all the lines are full, the answer to the riddle is revealed.

Riddle: What do you get from a pampered cow?

Every officer's job

_____ 1 2 3 4

Not innocent

_____ 5 2 6 7 3 4

Get ready for a picture

_____ 8 9 10 11

More than some, but not all

_____ 12 9 10 3

Elephants have two of them

_____ 3 2 10 13

_____ 4 9 2 _____ 5 11 3 _____ 10 8 9 6 7 11 1

_____ 12 6 7 13

Answers to Puzzle:

Every officer's job
 DUTY
 Not innocent
 GUILTY
 Get ready for a picture
 POSE
 More than some, but not all
 MOST
 Elephants have two of them
 TUSK
Riddle: What do you get from a pampered cow?
 You get spoiled milk.



Michael Brad Moss was born in 1971 in New York City. It should come as no surprise to find that he took to bridge like a duck to water - his parents are Mike Moss and Gail Greenberg.

Brad was named the ACBL King of Bridge at the age of 18. Two years later, he became the youngest player ever to win the New York Player of the Year title. Also in 1991, he was a member of the USA team that just missed out on a medal at the World Junior Teams in Ann Arbor, Michigan, finishing fourth, and won his first National title - the Master Mixed Teams. In 1993, he added to his tally by winning the Grand National Teams and the Life Masters Open Pairs.

His successful partnership with Fred Gitelman included wins in the 1998 NABC Board-a-Match Teams, a third in the 1998 Cavendish Invitational Pairs, first in the 2005 & 2010 Spingolds, the 2010 Roth Open Swiss, the 2012 Jacoby Open Swiss, the Bronze medal in the 2005 Bermuda Bowl and gold in the 2010 Rosenblum teams.

With Joe Grue he finished second in the 2013 Spingold (tied at the end of regulation play) and won the 2015 Spingold.

Meet the Players

Michael Rosenberg was born in 1954 in NYC. His British born parents moved the family to his mother's native home of Glasgow when Michael was a few months old, and he remained in the UK until 1978, when he moved 'back' to NYC in the hopes of playing bridge professionally. Twenty-five years later, he finally became a full time professional player. In the meantime, he traded options, had some kids (Ivana, Jahna, and Kevin), and managed to play a bit of bridge here and there (an underbid perhaps; Zia always accused him of being an underbidder). In 1996 he married his current life partner Debbie Rosenberg, and they moved to Cupertino, California with their son Kevin in 2011.

Michael had some considerable success at chess when he was young; he represented Scotland in the World Junior Championship and three times in the World Under-26 Chess Olympiad. But, having plateaued at that game, he quickly took to bridge in high school. He and partner Barnet Shenkin soon became the top pair in Scotland, with numerous accomplishments in major British and European events, including juniors. After moving to the U.S., through much of the '80's, Michael didn't play much bridge. Suffering from severe withdrawal, in 1989 he started playing regularly in NABC's, with Zia as his most frequent partner until 2007. Since 1989 he's missed only one NABC, and has played every US Bridge Championship since the event became open in 1994.

Aside from his many successes with Zia, some highlights of Michael's bridge career include:

- Winning the World Par Contest 1998
- ACBL Player of the Year 1994, 2003
- Winning both the Sunday Times Invitational Pairs and the Gold Cup in 1976 (with Barnet Shenkin)
- Cavendish Pairs 1st place 1986 (with Matthew Granovetter)
- Cavendish Teams 1st place 1993 (with Debbie Zuckerberg)
- Gold Medal in Rosenblum Cup 1994 (partnering Roger Bates)
- Silver medal in the World Team Olympiad 1992 (partnering Seymon Deutschl)
- Silver medal in the World Open Pairs 1994 (with Bob Hamman)



While nobody loves bridge more than Michael, he also enjoys crossword puzzles, movies, mysteries, music, and following sports and politics. In 2013 Michael became involved with the USBF Junior Training program, as both a mentor and an organizer.

(continued from page 4)

| | | | |
|------------|-----------|----------|---------|
| West | North | East | South |
| Wooldridge | Chan | Hurd | Sorkin |
| | 1D | 3C | Pass |
| Pass | Double | All Pass | |
| Henner | G Wolpert | Ivatury | Fireman |
| | 1D | Pass | 3D |
| 3S | 4D | 4S | 5D |
| Double | All Pass | | |

Fireman/Ivatury

In Fireman/Ivatury, it was only an 8 IMP swing. In the Open Room, North/South played in 5DX making 6 as described on page 4.

In the Closed Room, however, the auction took a different turn. North opened 1D; East overcalled 3C; and South hoped for the re-opening double. When the double came, he happily sat. N/S scored 300, collecting one diamond, two hearts and three trump tricks. It really wasn't enough ... 8 IMPs to Fireman.

In Rosenthal/Robinson, the swing was even less. In the Open Room, Berkowitz and Sontag had the same auction as

Wooldridge and Hurd, collecting the same seven tricks as in the Closed Room above.

In the Closed Room, however, Robinson saved some IMPs when Stewart/Woolsey (N/S) bid to 5D but Silverstein/Rosenthal didn't double. The auction:

| | | | |
|-----------|---------|-------------|---------|
| Rosenthal | Stewart | Silverstein | Woolsey |
| | 1D | Pass | 3C |
| 3D | Pass | 3H | Pass |
| Pass | 5D | All Pass | |

5D was successful, but Robinson only scored 3 IMPs

Robinson/Rosenthal

Board 7
 Dealer: S
 All Vul.
 Segment 3

♠ 93
 ♥ 84
 ♦ AKJ8753
 ♣ T9

♠ 842
 ♥ A532
 ♦ 94
 ♣ Q852

♠ T6
 ♥ KQ9
 ♦ QT62
 ♣ A743

♠ AKQJ75
 ♥ JT76
 ♦
 ♣ KJ6



| | | | |
|----------|---------------|----------|-------------|
| Lo | Martel | Liu | Fleisher |
| | | | 1S |
| Pass | 3D | Pass | 3H |
| Pass | 3S | Pass | 4S |
| All Pass | (Closed Room) | | |
| Moss | Morgan | Grue | Harris |
| | | | 1S |
| Pass | 1NT (forcing) | Pass | 2S |
| Pass | 2NT | Pass | 3S |
| Pass | 4D | Pass | 4H |
| Pass | 4S | All Pass | (Open Room) |

Harris/Fleisher

Opening leads matter! The best lead for East/West is a trump. Declarer can never get to dummy and will fail two tricks.

In the Open Room of Harris/Fleisher, Moss chose the underlead of his HA, allowing declarer to score nine tricks when Grue won his HK and shifted to the 6 of trump. Declarer ducked the trump to dummy's nine and tossed two hearts on the diamond ace/king.

While this could have been a small win for N/S, it was actually a large loss. In the Closed Room, Lo led the C5, the one lead to let the contract succeed. Liu won the CA and played the S6. Fleisher didn't need to duck. He rose, cashed the CK, ruffed a club, took his two heart discards and collected 10 tricks and 12 IMPs.

Board 13 ♠ KQT72
 Dealer: N ♥ K863
 All Vul. ♦ 92
 Segment 3 ♣ Q5

♠ AJ ♠ 953
 ♥ A ♥ Q9
 ♦ QJT73 ♦ A54
 ♣ J9732 ♣ AKT84

♠ 864
 ♥ JT7542
 ♦ K86
 ♣ 6



| Closed Room | | | |
|-------------|----------|---------|-------|
| West | North | East | South |
| Henner | Kranyak | Ivatury | Demuy |
| | 1S | 2C | 2S |
| 3S | Pass | 4C | Pass |
| 5C | All Pass | | |

Fireman/Ivatury

| Open Room | | | |
|------------|----------|------|--------|
| West | North | East | South |
| Wooldridge | Chan | Hurd | Sorkin |
| | Pass | 1NT | Pass |
| 3D | Pass | 4C | Pass |
| 4D | Pass | 4H | Pass |
| 6C | All Pass | | |

An aggressive opening bid paid off big in the Closed Room of the Fireman/Ivatury match and the Open Room of the Harris/Fleisher match.

Kranyak, 1st seat Vul with only 10 HCP, opened 1S. Not only did it result in his opponents not bidding the slam that was bid and made by his teammates but had his opponents bid it, Demuy would have led a spade rather than the more obvious heart, and the slam would have failed. Ivatury took his eleven tricks for +600.

| Open Room | | | |
|-----------|----------|------|--------|
| West | North | East | South |
| Moss | Morgan | Grue | Harris |
| | 1S | Pass | 2D |
| Double | 2H | 2S | Pass |
| 3C | 3H | 4C | Pass |
| 5C | All Pass | | |

Harris/Fleisher

Against Wooldridge and Hurd, Sorkin made the "normal" lead of the HJ. This gave Wooldridge the luxury of knocking

| Closed Room | | | |
|-------------|--------|------|----------|
| West | North | East | South |
| Lo | Martel | Liu | Fleisher |
| | Pass | 1C | Pass |
| 2C | 2S | 3S | Pass |
| 4D | Pass | 4S | Pass |
| 5D | Pass | 6C | All Pass |

out the diamond king and pitching his spade losers, succeeding in the slam. 13 IMPs to Fireman

In the Harris/Fleisher match, in the Open Room, Morgan also opened 1S on the ten count. Like Wooldridge's opponents, Morgan's opponents also avoided the slam. Played from East in this room, North led the SK, preventing 12 tricks from being scored in slam. Since the opponents were not in slam, however, when South won his DK, he led the HJ instead of a spade and declarer made twelve tricks for +620.

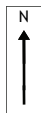
In the Harris/Fleisher Closed Room, Martel had the best of all worlds. He didn't open in first seat and his opponents bid the vulnerable slam. BUT he did overcall in the second round of bidding, assuring Fleisher that it was best to lead spades.

Fleisher tabled the S4 and the slam failed one trick. 12 IMPs to Fleisher

Board 19 ♠ K5
 Dealer: S ♥ KJ8765
 E/W Vul. ♦ J4
 Segment 4 ♣ KQ3

♠ T87 ♠ J942
 ♥ 43 ♥ AT9
 ♦ 632 ♦ A9
 ♣ AT854 ♣ J976

♠ AQ63
 ♥ Q2
 ♦ KQT875
 ♣ 2



| Open Room | | | |
|------------|-------|----------|--------|
| West | North | East | South |
| Wooldridge | Chan | Hurd | Sorkin |
| | | | 1D |
| Pass | 1H | Pass | 1S |
| Pass | 2C | Pass | 2D |
| Pass | 2H | Pass | 3H |
| Pass | 4H | All Pass | |

| Closed Room | | | |
|-------------|---------|----------|---------|
| Henner | Wolpert | Ivatury | Fireman |
| | | | 1D |
| Pass | 1H | Double | 1S |
| Pass | 3NT | All Pass | |

Fireman/Ivatury

In the Open Room of the Fireman/Ivatury match, N/S reached a reasonable looking 4H on eight combined trumps and 26 HCP. Hurd proved himself a wise defender, leading his doubleton diamond ace, going for a ruff to defeat the contract. This worked great. When the DA held, he continued with his low diamond. Declarer won in hand and played a heart to the queen and a heart to the king and Hurd's ace. Hurd won and shifted to a club. Wooldridge took his ace and led the D6 promoting his partner's HT! Down one.

In the Closed Room of the same match, Wolpert/Fireman reached 3NT after Ivatury made a hungry takeout double on his ten HCP for his two Jxxx suits.

| Open Room | | | |
|-----------|--------|------|--------|
| Moss | Morgan | Grue | Harris |
| | | | 2D* |
| Pass | 2NT | Pass | 3C |
| Pass | 3S | Pass | 4H |
| All Pass | | | |

| Closed Room | | | |
|-------------|-------|----------|-----------|
| Lo | Pepsi | Barron | Rosenberg |
| | | | 1D |
| Pass | 1H | Pass | 1S |
| Pass | 2D | Pass | 3D |
| Pass | 3NT | All Pass | |

Harris/Fleisher

3NT makes ten tricks on any lead with the favorable position of the CA. 10 IMPs to Fireman

In Harris/Fleisher, in the Closed Room, Lo and Barron also reached 3NT and took their ten tricks.

In the Open Room, Morgan and Harris reached 4H after Marty again (see page 4) opened *2D showing 8-15 HCP, 5+ diamonds and a four card major. And again, Moss underled an ace... the ace of clubs! (see page 11) This underlead did not work out so well. There was no diamond ruff to beat the hand and no promotion to score the setting trick.

Making four ... 1 IMP to Harris

Board 18 ♠ 72
 Dealer: E ♥ AQ753
 N/S Vul. ♦ A4
 Segment 4 ♣ AQJ2

♠ QJ9 ♠ 643
 ♥ KT9862 ♥ J4
 ♦ 85 ♦ 732
 ♣ K8 ♣ 97643

♠ AKT85
 ♥
 ♦ KQJT96
 ♣ T5



In Fireman/Ivatury, both tables reached 6D North/South and collected 13 tricks. +1390 and no swing.

In Fleisher/Harris, it went differently and there was a 13 IMP swing.

| Open Room | | | |
|-----------|--------|----------|--------|
| West | North | East | South |
| Moss | Morgan | Grue | Harris |
| | | Pass | 1S |
| 2H | Double | Pass | 4D |
| Pass | 6NT | All Pass | |

Against 6NT, Grue led a club picking up his partner's outside king. Declarer collected four clubs, six diamonds, two spades and a heart to make seven.

Against 7D, Lo led a trump. Rosenberg won in hand, cashed his ace and king of spades, ruffed a spade in dummy with the trump ace and returned to his hand with a heart ruff to claim 13 tricks.

| Closed Room | | | |
|-------------|-------|--------|-----------|
| Lo | Pepsi | Barron | Rosenberg |
| | | Pass | 1D |
| 2H | 3NT | Pass | 4D |
| Pass | 4H | Pass | 4S |
| Pass | 4NT | Pass | 5S |
| Pass | 5NT | Pass | 7D |
| All Pass | | | |

When Pepsi key carded and told his partner they had all the controls, he no longer had to make the decision to bid or not to bid the grand by himself. Bridge is a partnership game and it works best with both partners involved.

Dinkin vs Simson - USA2

Board 21 ♠ KQT7
 Dealer: N ♥ 3
 N/S Vul. ♦ 852
 ♣ AKJ43

♠ J8542 ♠ 6
 ♥ JT872 ♥ KQ54
 ♦ 4 ♦ AKQJT76
 ♣ T6 ♣ Q

♠ A93
 ♥ A96
 ♦ 93
 ♣ 98752



| L Stansby | Dinkin | J Stansby | Shuster |
|-----------|-----------------|-----------|----------|
| | 1C (0+C & 9-14) | 1D | All Pass |

East/West is cold for 4H. North/South is cold for 4C. 1D can be held to 2 if N scores two ruffs. 5C only goes down because of the poor diamond distribution and an overruff.

The problem here is that South and his opponents have no idea what his partner holds when he opens 1C. It could be any minimum unbalanced hand or a balanced hand with 12-14 HCP. It could even be a 6 card major. Unaware as he was, Shuster passed.

Probably because Shuster didn't bid over 1D, Dinkin judged that his partner did not hold a 4 card major and he didn't re-open.

How should one defend against this?

Just some food for thought!