



Volume 11, Issue 13
May 9, 2017

Results : Women's USA1 and USA2

1	<u>Clerkin</u>	227	30	33	<u>21</u>	<u>23</u>	7	74	<u>15</u>	24
2	<u>Eythorsdottir</u>	195	21	46	<u>39</u>	<u>12</u>	18	30	<u>7</u>	22
Playoff										
3	<u>Jenkins</u>	225	26	23	37	26	45	41	9	18
4	<u>Wittes</u>	222	23	46	44	10	3	24	36	36

Open USA2 ... Halftime

#	TEAM	TOTAL	SET #1	SET #2	SET #3	SET #4	SET #5
2	<u>Diamond</u>	208	<u>31</u>	<u>85</u>	<u>50</u>	42	
5	<u>Harris</u>	68	<u>11</u>	<u>16</u>	<u>21</u>	20	WD
3	<u>Dwyer</u>	97	<u>17</u>	<u>21</u>	<u>47</u>	12	
4	<u>Fleisher</u>	145	<u>38</u>	<u>40</u>	<u>25</u>	42	

Congrats Team Clerkin USA1 Women's



USBF President
Marty Fleisher
USBF Vice President
Josh Parker
USBF COO & Secretary
Jan Martel
USBF CFO
Stan Subeck

Directors - USBC
Chris Patrias
Sol Weinstein
McKenzie Myers
Jeanne Van Den Meiracker
Operations Manager
McKenzie Myers
Appeals Administrator
Suzi Subeck, Chairman

Bill Arlinghaus
Martha Katz

Appeals Panel:
David Berkowitz
Huub Bertens
Bart Bramley
Tom Carmichael
Gary Cohler
Ish Del Monte
Mark Feldman
Ron Gerard
Fred Gitelman
Bob Hamman
Geoff Hampson

Mike Kamil
Oren Kriegel
Chip Martel
Beth Palmer
Pepsi Pszczola
Eric Rodwell

Debbie Rosenberg
Michael Rosenberg
Kerri Sanborn

Aaron Silverstein
Danny Sprung
Lew Stansby
Adam Wildavsky

VuGraph Organizers
Jan Martel

Bulletin Editor
Suzi Subeck

Photographer
Peg Kaplan

Local Hospitality Chairs
Lisa Berkowitz
Martha Katz

UNITED STATES BRIDGE CHAMPIONSHIPS

“Trials” and Tribulations

Limey Jack...

Limey Jack is pleased that the Ladies Tuesday afternoon tea was not spoilt by the cell phone penalty, but there was nary room for the lorry to scrape by. Howie Dung had it wrong, of course. In the final for USA 2, it will be Disa and Jenkins for the win.

Friar Tuck was in fine form, but quite winded toward the end. Daresay had it gone another furlong, he would have collapsed face to the bottom in the bog. Well done to the Clerkin team.

Disa-Jenkins: Limey Jack keeps getting the fours. Whilst there should be a ruling, it has yet to occur. This time, the fancy is struck by the higher quality of the team that includes the European. Jenkins should have the ad, but there are more weak spots. In the end, make your way to the Punter and vote for Disa.

Roses are red, violets are blue.

Howie Dung is a cretin, that is all.

Cheers, LJ

Howie Doing...

Amazing how fair a penalty seems.

Three cell phone crimes... one each for three teams!

Only in Women's can such things take place.

Nine IMPs a team disappeared into space!

USA1 is over and through.

One pick tonight for USA2.

Jenkins beat Wittes by 3 ... not a pity!
Determined by bridge not by committee!

Jenkins v Disa... who is ensuing?
Not a tough call for Sir Howie Doing!

I'm taking Disa ... a group of just four.
Less chance of phone calls to lessen the score!

ALERT!
On many of the boards,
cards slide between pockets
when being carried.
Please count
Your cards on
every hand!



2017 Women's USBC TEAMS

There are 7 teams entered. The teams are listed in their Round Robin number order.

Clerkin	Joanne Weingold Migry Zur Campanile Beth Palmer Dennis Clerkin, NPC	Jill Meyers Sylvia Shi Shannon Cappelletti
Eythorsdottir	Hjordis Eythorsdottir, Capt Cindy Bernstein	Linda Lewis Claire Tornay
Sakr	May Sakr, Capt Anam Tebha	Allison Howard Cristal Nell
Baker	Lynn Baker, Capt Kerri Sanborn Tobi Sokolow	Karen McCallum Irina Levitina Janice Seamon-Molson
Wittes	Pamela Wittes, Capt Cheri Bjerkan	Ljudmila Kamenova Rozanne Pollack
Jenkins	Bronia Jenkins, Capt Sylvia Moss Bernace De Young	Sheri Winestock Connie Goldberg Irina Kislitsyna
OSMO	Teri Smoot Toni Bales Paul Pugsley, NPC	Brenda Pugsley Kimberly Music

Hospitality Information...



The hospitality suite for the 2017 Open USBC is room 2321, one level up from the playing rooms. Our wonderful hostess, Lisa Berkowitz, and her co-chair, Martha Katz, will serve breakfast each day from 8:00-10:30, as well as lunch from 1:00-4:00. **Please note: Sit outs are encouraged to come as early as possible for lunch to avoid overcrowding the suite. Everyday, lunch will be served both in 2321 and 1321 to handle the expected overflow.**

The hospitality suite will be open for Vugraph, casual chit chat, drinks & snacks during the rest of the playing hours and for a short time after the end of the day.

The "Players' Break Room" (aka Jan's office) is room 1321. It will be available for the entire tournament. You can find coffee, soft drinks and snacks in that room while you wait for slow teammates to finish playing.

No Electronic Devices are Permitted in the Playing Area. This applies to players AND kibitzers. Severe penalties will be assessed for violation of this rule. Please turn off all cell phones and check them at the door.

The USBF reserves the right to wand anyone entering the playing field.



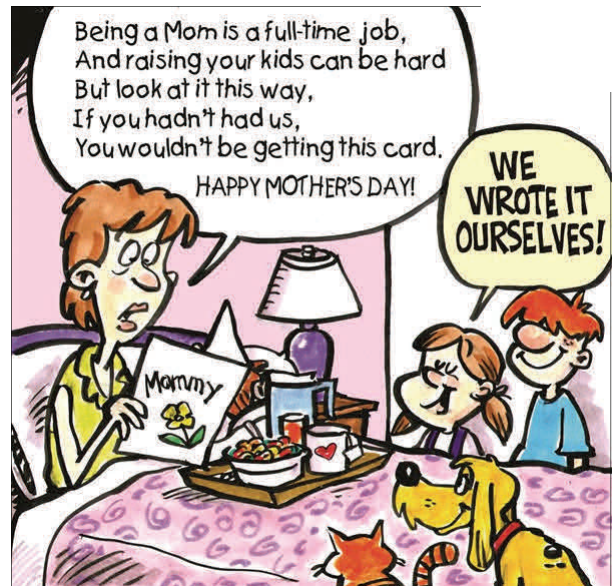
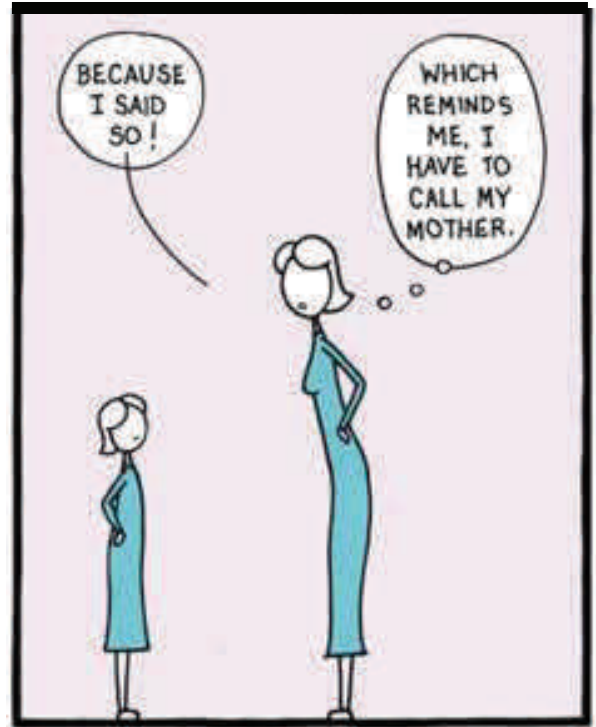
OpenTeams Entered... listed in RR seeding order

"TRIALS" AND TRIBULATIONS

Nickell Bye to QF	Frank Nickell, Capt Jeff Meckstroth Bobby Levin	Ralph Katz Eric Rodwell Steve Weinstein
Diamond Bye to QF	John Diamond, Capt Justin Lall Eric Greco	Brian Platnick Kevin Bathurst Geoff Hampson
Fleisher Bye to R16	Martin Fleisher, Capt Brad Moss Michael Rosenberg	Chip Martel Joe Grue Jacek Psczola
Fireman Bye to R16	Paul Fireman, Capt John Hurd John Kranyak	Gavin Wolpert Joel Wooldridge Vincent Demuy
Rosenthal	Andrew Rosenthal, Capt Chris Willenken David Berkowitz	Aaron Silverstein Eldad Ginossar Alan Sontag
Meltzer	Rose Meltzer, Capt Steve Garner Bart Bramley	Nikolay Demirev Ron Smith Robert Hamman
Mahaffey	Jim Mahaffey, Capt Neil Chambers Matthew Granovetter	Sam Lev John Schermer Russell Ekeblad
Dwyer	Kevin Dwyer, Capt Billy Cohen Michael Kamil	Roger Lee Gary Cohler Michael Becker
Wold	Eddie Wold, Capt Marc Jacobus Chris Compton	Michael Levine Mike Passell David Grainger
Simson	Doug Simson, Capt JoAnna Stansby	Jeff Aker Lew Stansby
Miller	Jeffrey Miller, Capt Reese Milner Joshua Stark	William Engel Hemant Lall
Robinson	Steve Robinson, Capt Kit Woolsey Bill Pollack	Peter Boyd Fred Stewart Ron Rubin
Jacobs	George Jacobs, Capt Dick Bruno David Lehman	Claude Vogel Jeffrey Schuett Richard Melson
Harris	Martin Harris, Capt Ai-Tai Lo Jay Barron	Jacob Morgan Howard Liu
Ivatury	Uday Ivatury, Capt Lapt Chan	Christal Henner Jon Sorkin
Dinkin	Sam Dinkin, Capt W. Thomas Reynolds	Michael Shuster Lance Kerr
Kent	Robert Kent Brenda Pugsley	Ellen Kent Paul Pugsley

When I'm competing, I need to be strong.

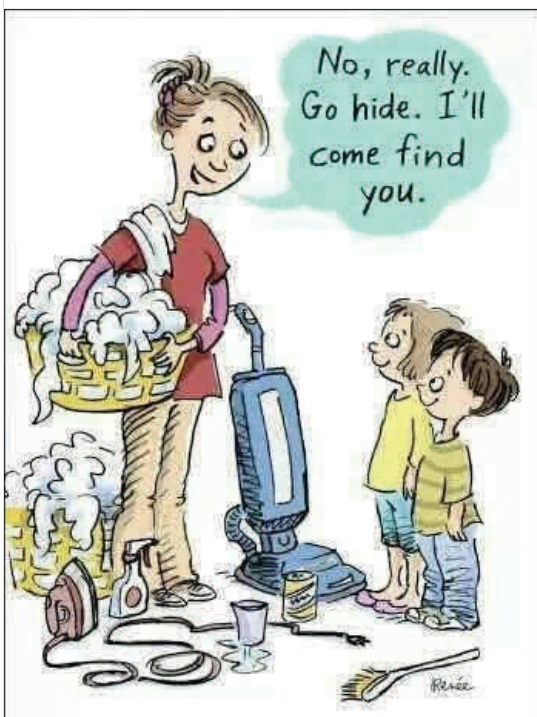
Ashley Wagner



There is new FB page devoted to these Team Trials. It can be accessed at:
https://www.facebook.com/United-States-Bridge-Federation-1963001673929727/?ref=aymt_homepage_panel
 There are pictures, links to these newsletters online ... and you can post Trials relevant messages. Check it out!

Open

USA2 SEMI-FINAL			
MONDAY	MAY 8	10:00 - 12:10 12:25 - 2:35 3:45 - 5:55 6:10 - 8:20	SEGMENT 1 BOARDS 1-15 SEGMENT 2 BOARDS 16-30 70 MINUTE LUNCH BREAK SEGMENT 3 BOARDS 1-15 SEGMENT 4 BOARDS 16-30
TUESDAY	MAY 9	10:00 - 12:10 12:25 - 2:35 3:45 - 5:55 6:10 - 8:20	SEGMENT 5 BOARDS 1-15 SEGMENT 6 BOARDS 16-30 70 MINUTE LUNCH BREAK SEGMENT 7 BOARDS 1-15 SEGMENT 8 BOARDS 16-30
USA2 FINAL			
WEDNESDAY	MAY 10	10:00 - 12:10 12:25 - 2:35 3:45 - 5:55 6:10 - 8:20	SEGMENT 1 BOARDS 1-15 SEGMENT 2 BOARDS 16-30 70 MINUTE LUNCH BREAK SEGMENT 3 BOARDS 1-15 SEGMENT 4 BOARDS 16-30
THURSDAY	MAY 11	10:00 - 12:10 12:25 - 2:35 3:45 - 5:55 6:10 - 8:20	SEGMENT 5 BOARDS 1-15 SEGMENT 6 BOARDS 16-30 70 MINUTE LUNCH BREAK SEGMENT 7 BOARDS 1-15 SEGMENT 8 BOARDS 16-30



USA2 FINAL			
TUESDAY	MAY 9	10:00 - 12:10 12:25 - 2:35 3:45 - 5:55 6:10 - 8:20	SEGMENT 1 BOARDS 1-15 SEGMENT 2 BOARDS 16-30 70 MINUTE LUNCH BREAK SEGMENT 3 BOARDS 1-15 SEGMENT 4 BOARDS 16-30
WEDNESDAY	MAY 10	10:00 - 12:10 12:25 - 2:35 3:45 - 5:55 6:10 - 8:20	SEGMENT 5 BOARDS 1-15 SEGMENT 6 BOARDS 16-30 70 MINUTE LUNCH BREAK SEGMENT 7 BOARDS 1-15 SEGMENT 8 BOARDS 16-30

Women's

			7		2			
				4	8	9	2	
		3		9		5		
		1	8	3		4		
9							6	
2		7			6	3		
3			1		5			
			4		9			5
6								7

Sudoku 1

Sudoku

Sudoku 2

5						9		
		3		8			1	
8		1	3	5	2			7
3			7					
	4	7				2	3	
		2	9		6	7	4	
	3	8	5					
						6		
6								

**Answers to Puzzle
No Peeking!**

Sudoku 2 Solution

2	6	5	1	9	8	3	7	4
7	1	9	2	4	3	6	5	8
4	3	8	5	6	7	1	2	9
1	8	2	9	3	6	7	4	5
9	4	7	8	1	5	2	3	6
3	5	6	7	2	4	8	9	1
8	9	1	3	5	2	4	6	7
6	7	3	4	8	9	5	1	2
5	2	4	6	7	1	9	8	3

Sudoku 1 Solution

6	5	9	2	8	3	1	4	7
1	8	2	4	7	9	6	3	5
3	7	4	1	6	5	2	8	9
2	4	7	9	1	6	3	5	8
9	3	8	5	2	4	7	6	1
5	6	1	8	3	7	4	9	2
8	2	3	6	9	1	5	7	4
7	1	5	3	4	8	9	2	6
4	9	6	7	5	2	8	1	3

Puzzle Page ...

Eddie and four of his friends chatted on Facebook last night about the first snowfalls of the season. Each of the friends lived in a different northern state and all of them had already gotten a snowstorm, each on a different day of the week. While the storms were small so far, only one to three inches, they speculated on how much snow each area would get during the whole winter. After all, there was still plenty of winter to come! Determine the name of each friend, the state each lived in, how much snow each got and on which weekday from this first storm, and what each friend's speculated total snowfall for the winter was (40, 50, 60, 70, or 80 inches).

1. Eddie lived in Massachusetts but he didn't get snow on Thursday. Harold got snow on Tuesday but not 2 inches.
2. Walter got half an inch less snow than the friend who got snow on Monday but he got an inch more than the friend who estimated his area would get 80 inches.
3. The friend who lived in Michigan, who wasn't Matthew, guessed 20 inches more snow for his area than the friend who got snow on Friday guessed.
4. The five friends, in no particular order, were Alan, the friend who estimated his area would get 80 inches, the friend who lived in Vermont, the friend who already got 2 inches of snow, and the friend who got snow on Thursday.
5. Matthew got 3 inches of snow but not on Thursday. Alan lives in New York but he didn't get snow on Wednesday.
6. The friend from Montana estimated his area would get 30 inches less than Matthew guessed. The friend that guessed 50 inches of snow didn't get snow on Thursday.

	Massachusetts	Michigan	Montana	New York	Vermont	1 inch	1-1/2 inches	2 inches	2-1/2 inches	3 inches	Monday	Tuesday	Wednesday	Thursday	Friday	40 inches	50 inches	60 inches	70 inches	80 inches	
Alan																					
Eddie																					
Harold																					
Matthew																					
Walter																					
40 inches																					
50 inches																					
60 inches																					
70 inches																					
80 inches																					
Monday																					
Tuesday																					
Wednesday																					
Thursday																					
Friday																					
1 inch																					
1-1/2 inches																					
2 inches																					
2-1/2 inches																					
3 inches																					

Answer:

40 inches	Thursday	2-1/2 inches	Montana	Walter
70 inches	Monday	3 inches	Vermont	Matthew
80 inches	Tuesday	1-1/2 inches	Michigan	Harold
50 inches	Wednesday	2 inches	Massachusetts	Eddie
60 inches	Friday	1 inch	New York	Alan
Forecasted Snowfall	Day of Week	First Snowfall	State	First Name

USA2 ... Day 1 Semi-Finals

Board 4 ♠ AQ
 Dealer: W ♥ K87
 All Vul. ♦ KJT82
 Segment 1 ♣ JT6

♠ 9653 ♠ JT7
 ♥ Q32 ♥ AJ
 ♦ 73 ♦ AQ
 ♣ K985 ♣ AQ7432

♠ K842
 ♥ T9654
 ♦ 9654
 ♣



Closed Room			
West	North	East	South
Pepsi	Becker	Rosenberg	Kamil
Pass	1NT (15-17)	Pass	2C
Pass	2D	Pass	2H
Pass	Pass	3NT	All Pass

Open Room			
Cohen	Grue	Cohler	Moss
Pass	1NT (15-17)	Double	2D (transfer)
Pass	2H	3C	Pass
4C	Pass	5C	All Pass

Fleisher/Dwyer

It's interesting that both Norths, playing 15-17 NT's opened 1NT on a flat 14. In the Open Room, Cohler doubled with his 18 count. In the Closed Room, Rosenberg passed.

Once Cohler doubled and bid his club suit, Cohen liked his four card support. He raised so Cohler could make an informed decision of whether or not to bid game. This was a good/bad scenario. Bidding game was correct, however, bidding 4C to get there took them past the making game of 3NT. Perhaps Cohen could have bid 3H to leave 3NT in the picture. He holds a flat hand with four spades and three hearts to the queen! After the 4C bid, Cohler raised to the club game and played it there.

Moss led a heart; Cohler won the jack and cashed the HA. He pulled three rounds of trump ending in dummy and finessed the DK. The problem was that he needed to do two things at once: He need to finesse the diamond, but he also needed to ruff the last heart. The diamond queen held, but he was one trick behind. Grue could win a spade, cash a spade and exit a heart. Had Gary been able to strip the hand, Grue would have been endplayed with the spade suit blocked up. As it was, the contract failed by a trick.

Note that the lead of a spade to the ace and queen could be overtaken for a ruff to defeat the contract off the top. Overtaking, of course, blows up if partner started with S:AQJ because the S9 will establish for a pitch.

Rosenberg/Pepsi do not play penalty doubles over strong NT's. Double would have shown a four card major and a longer minor. Michael's only alternative to passing would have been to bid 3C in direct seat. When the opponents settled in 2H and it came back to him, he showed the good instinct it takes to play at this level.. He bid 3NT.

Kamil led the H5; Rosenberg won the jack. He was assured nine tricks. He played a club to the dummy, finessed the diamond and ran the clubs. The pitching was not obvious and when the smoke cleared, Rosenberg took 11 tricks for +660.

13 IMPs to Fleisher

On the very next board, Dwyer took back 11 IMPs.

Board 5	♠ 85	
Dealer: N	♥ AT2	
N/S Vul.	♦ 8742	
Segment 1	♣ 7632	
♠ T2		♠ AKQJ974
♥ 986543		♥ K7
♦ K5		♦ AT6
♣ AKJ		♣ 8
	♠ 63	
	♥ QJ	
	♦ QJ93	
	♣ QT954	



Closed Room			
West	North	East	South
Pepsi	Becker	Rosenberg	Kamil
	Pass	1S	Pass
1NT (forcing)	Pass	4C	Pass
4D	Pass	4NT	Pass
5D	Pass	5S	All Pass

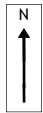
Open Room			
Cohen	Grue	Cohler	Moss
	Pass	1S	Pass
2H	Pass	3S	Pass
4C	Pass	4NT	Pass
5D	Pass	6S	All Pass

Fleisher/Dwyer

Rosenberg/Pepsi play very light openers and 2/1 GF. Pepsi responded 1NT to Rosenberg's 1S and Rosenberg jumped to 4C, a self splinter... Pepsi cued a diamond control. Michael does not know that Pepsi holds an invitational hand in hearts with a bad heart suit. (*Ed. Note: Rosenberg/Pepsi play an immediate jump in hearts in response to the 1S opening is invitational but likely promises a better suit than Pepsi holds here*). Rosenberg bid 4NT 1430, and Pepsi bid 5D. Pepsi thought that 4C might show a void, making 4NT exclusion. The partnership plays different responses to exclusion and Rosenberg, thinking Pepsi had no aces, signed off in 5S, playing it there and collecting the obvious 12 tricks after Kamil led the HQ to Becker's ace.

In the Open Room, Cohler bid 1S and Billy Cohen made the 2/1 in hearts. Cohler jumped to 3S showing his solid suit; Cohen cued his CA; Cohler asked for keycards and bid the slam. As in the Closed Room, Cohler collected the 12 tricks. Another slam swing occurred on Board 9... this one 11 IMPs to Fleisher.

Board 9	♠ K7	
Dealer: N	♥ AT8	
E/W Vul.	♦ A85	
Segment 1	♣ AKJ73	
♠ 52		♠ QJ93
♥ K9542		♥ QJ763
♦ KQ97		♦ T3
♣ 85		♣ 92
	♠ AT864	
	♥	
	♦ J642	
	♣ QT64	



Closed Room			
Pepsi	Becker	Rosenberg	Kamil
	2NT (20-21)	Pass	3H (transfer)
Pass	3S	Pass	3NT
All Pass			

Open Room			
Cohen	Grue	Cohler	Moss
	1C (strong)	Pass	1NT (8-11 5+S)
Pass	2C	Pass	3C
Pass	3D	Pass	3H
Pass	3S	Pass	3NT
Pass	4C	Pass	4S
Pass	6C	All Pass	

Fleisher/Dwyer

In the Closed Room, Rosenberg led the HQ and Becker took 9 tricks.

In the Open Room, Moss led a trump against 6C. Grue won, played king of spades and a spade to ace and ruffed a spade. He returned to dummy with a trump, clearing the suit and ruffed another spade, setting up the last spade for the discard of a diamond.

2017 Women's USBC Appeal #1

Board 8 North (Bernace De Young)
Vul: None ♠ A 9 8 5 2
Dealer: West ♥ A J 6
♦ Q 5
West (Pam Wittes) ♣ J 6 4 East (Ljudmila Kamenova)

♠ J 3 ♠ K Q T 7 4
♥ K Q T 9 5 4 3 ♥ 8 7 2
♦ 6 2 ♦ A 3
♣ 3 2 ♣ 9 8 5

South (Irina Kisllitsyna)
♠ 6
♥ ---
♦ K J T 9 8 7 4
♣ A K Q T 7

Bidding

The auction was not relevant and not known.

North was the declarer in 6♣

Appeals Committee

David Berkowitz, Chairman
Eric Rodwell, Member
Kit Woolsey, Member

Trick 1: ♠K - 6 - 3 - 9

According to North, the ♠9 fell out of her hand when she was playing the Ace.

According to East, the ♠9 was played and as East was turning her card, North said she had played the wrong card.

The players did not call the director, scored the board as down 1 and continued to play the remaining boards.

After play for the segment had concluded, NS called the director.

Table Result: 6♣N-1

Director's Ruling: No adjustment, score stands

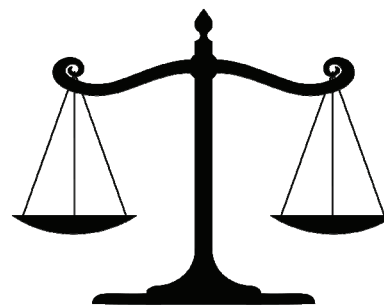
Relevant Laws: 10A&B, 12A3, 45C2, 48A

Appeals Committee Ruling:

The director presented the facts as she understood them. There was a dispute as to whether the spade ace was actually played. The spade nine was on the table, and there was at least a pause before the declarer said something like "oops". The players agreed on down one and it was scored.

The committee heard no evidence which would suggest that we overturn the directors finding of the facts. The ruling was unanimous.

The players were also reminded that a director should be called immediately in the case of any irregularity.



Director: Jeanne Van Den Meiracker

Board 24
 Dealer: W
 None Vul.
 Segment 2

♠ AJ87
 ♥ J93
 ♦ Q852
 ♣ 87

♠ QT632
 ♥ K65
 ♦ T96
 ♣ Q6

♠ K954
 ♥ T
 ♦ 74
 ♣ JT9532

♠
 ♥ AQ8742
 ♦ AKJ3
 ♣ AK4



The Diamond team knew it was their day when on Board 24, Lall and Bathurst, North and South respectively, missed the cold, non-vulnerable, easy to bid 6H slam and won 11 IMPs. In the other room, the following auction:

Diamond/Harris

Open Room

West	North	East	South
Diamond	Morgan	Platnick	Harris
Pass	Pass	Pass	1H
1S	2C (Drury)	3S (preemptive)	4S
Pass	4NT	Pass	5C
Pass	5D	Pass	7H
All Pass			

Seven hearts failed with the HK with West. Had the HK been with East, the momentum might well have gone the other way.

Board 28
 Dealer: W
 N/S Vul.
 Segment 2

♠ A9
 ♥ KQ5
 ♦ QT742
 ♣ 863

♠ KJ742
 ♥ T6
 ♦ K86
 ♣ T97

♠ QT8653
 ♥ 974
 ♦ A9
 ♣ Q4

♠
 ♥ AJ832
 ♦ J53
 ♣ AKJ52



Diamond/Harris

Open Room

Diamond	Morgan	Platnick	Harris
Pass	1C (bal 11-13)	2S	3D (hearts)
4S	Pass	Pass	5C
Pass	5H	All Pass	

Closed Room

Barron	Lall	Liu	Bathurst
Pass	1D	2S	3H
4S	Pass	Pass	4NT
Pass	5H	All Pass	

In the Closed Room, Barron had no reason to lead anything other than his partner's spade suit against 5H. He led the S2; Bathurst took dummy's ace and discarded a small diamond. Bathurst played a diamond off dummy, Liu winning his ace. Liu played a small club from the Q4, Bathurst winning his ace. A heart went to the king and a heart to the jack. The jack of diamonds knocked out the king and Bathurst had 11 tricks. +650

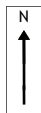
In the other room, Harris's unique bidding system resulted in the final contract being played from the three card side: North. After overcalling spades and having partner jump raise the suit, Platnick didn't think this lead would be effective to defeat the contract. A club lead didn't look right either and a trump ruff to be futile. Accordingly, Platnick led his diamond ace, hoping for a diamond ruff. Diamond signaled a continuation. Platnick won his DK and played a third diamond. Contract down one.

13 IMPs to Diamond

Board 5 ♠ 4
 Dealer: N ♥ JT92
 N/S Vul. ♦ A95
 Segment 3 ♣ AKJ83

♠ KQ95 ♠ AT73
 ♥ AK73 ♥ 65
 ♦ J87 ♦ KT
 ♣ Q6 ♣ T9752

♠ J862
 ♥ Q84
 ♦ Q6432
 ♣ 4



Closed Room			
West	North	East	South
Cohen	Grue	Cohler	Moss
	1C	1S	Pass
4S	All Pass		

Open Room			
Fleisher	Becker	Martel	Kamil
	1C	Pass	1S
Pass	1NT	Pass	2C (diamonds)
Pass	2D	All Pass	

In the Open Room, Fleisher, holding the West hand was faced with a bidding problem. He had the best hand at the table but no convenient bid over 1C—Pass—1S. He passed to see what developed. When 2D came around to him, he knew that South held four spades and five or more diamonds. His side might have a heart fit, but then again, if North held four hearts, bidding might not work out so well. Again he decided to pass. East/West did have a fit in spades but it was very difficult for them to bid spades naturally. In point of fact, they can take nine tricks in spades without opponent error. It looked like nothing more than a double partscore swing at worst.

In the Closed Room, Cohler took advantage of the vulnerability and overcalled 1S with a four card suit and seven high card points. With his 15 HCP and four card support, Cohen thought 4S would be a slam dunk.

Because of the poor black suit splits, 4S can be defeated. However...

Moss led his singleton club to his partner's jack. Grue returned a trump to the nine in dummy. Cohler played the CQ which Moss ruffed. Moss returned a trump and Cohler ruffed a club in dummy. Cohler led a diamond from dummy, Grue winning the ace.

At this point, Grue made the fatal play! He led the CA which Cohler ruffed in dummy with the king. Cohler led a diamond to the king and cashed the SA.

This was the 4 card end position with the lead in the East hand:

♠
 ♥ JT9
 ♦
 ♣ A

♠ 7
 ♥ 56
 ♦
 ♣ T

♠
 ♥ Q84
 ♦ Q
 ♣

Cohler cashed the S7 and a double squeeze ensued.
 South was forced to hold the DQ so he shed a heart.
 Cohler discarded dummy's DJ.
 Now it was Grue's turn to suffer.
 He needed to keep the CA so he discarded a heart.
 Dummy's H7 became the tenth trick.
 Nice play, Gary!
 11 IMPs to Dwyer

Ladies' Day...

Board 19 ♠ QT97
 Dealer: S ♥ K9
 E/W Vul. ♦ T983
 Segment 8 ♣ K98

♠ AK8
 ♥ QJT5
 ♦ J7
 ♣ Q432

♠ J65432
 ♥ A8763
 ♦
 ♣ AT



Closed Room			
West	North	East	South
Bernstein	Shi	Tornay	Palmer
			1S
3D	2S	3NT	4S
4NT	5S	Double	All pass

Open Room			
Meyers	Disa	Campanile	Lewis
			Pass
1D	Pass	1H	1S
2D	3S (weak)	3NT	4S
4NT	All Pass		

Against 5SX, Bernstein led a high diamond. Palmer ruffed and played a heart to the king, a heart to the ace and ruffed a heart. A club from dummy was played to the ace and another heart was ruffed. The SQ went to the king, and Tornay returned a club. The king won in dummy and another spade was led to Tornay's ace. Palmer had 11 tricks for +650.

Had the East/West hands been reversed, the contract could have been defeated on the on the lead of the ace, king, and a spade.

In the Open Room, Linda Lewis decided not to open her 6-5 in the majors in first seat. Meyers opened 1D; Campanile responded 1H and Lewis came to life with 1S. Meyers rebid her diamonds and Disa jumped to 3S (preemptive or mixed?). Campanile showed her stoppers by bidding 3NT. Lewis bid the obvious 4S. Meyers, with her solid seven card suit, bid 4NT. This ended the auction. Lewis led a spade and Meyers took nine tricks for a great save! 11 IMPs to Clerkin

If Disa had a way to show her near limit raise, Lewis might have bid 5S and pushed the board.

Board 5 ♠ 4
 Dealer: N ♥ JT92
 N/S Vul. ♦ A95
 Segment 3 ♣ AKJ83

♠ KQ95
 ♥ AK73
 ♦ J87
 ♣ Q6

♠ AT73
 ♥ 65
 ♦ KT
 ♣ T9752

♠ J862
 ♥ Q84
 ♦ Q6432
 ♣ 4



Here we see the same hand as on page 13 in the Fleisher USA2. The auction in the Open Room matched the auction at Fleisher's table. North rebid 1NT with a singleton spade and South was able to relay to 2D. This passed out and declarer collected eight tricks.

In the Closed Room, Meyers made a takeout double over 1S and Disa rebid her 5 card club suit. This was passed around to Meyers who balanced with a second double. Migry took her chances and passed the double, collecting 500.

Migry led a heart. Meyers took the AK and a third heart which Migry ruffed. Now Migry played the SA and a spade tapping declarer. Disa played the HJ, tapping Migry and Migry played a spade tapping Disa. Disa cashed her DA and played a diamond to Migry's king. Another spade tapped Disa who conceded down two .

Same board... same 11 IMP swing... different scenario! Why we just keep on playing!