

Volume 8, Issue 1
May 16, 2017

Old Times — Pre-Bulletin of the USSBC

The Prez Says ...



Welcome to the 2017 Senior United States Bridge Championships, which will select the two teams to represent the United States in the 2017 World Championships. Ten teams are entered.

The Senior USBC will last for 9 days.

The first stage will be a 1.5 day Round Robin. The top 8 teams will qualify for the USA1 Quarterfinal; the 9th & 10th place

teams will play in USA2.

The event will continue with 1.5 day KO matches for the USA1 Quarterfinal, Semi-Final & Final.

Losers in each stage of the event will drop into the USA2 bracket, which will run in parallel with the USA1 bracket. The USA2 Round of 16 will be a 5 team Round Robin to qualify 4 teams. All other USA2 stages will be KO. The losing USA1 finalist will drop into the USA2 Semifinal and choose their opponent.

Over the past several years many foreign players have told me that they viewed our trials as the best in the world, in large part because of our superb organization (in particular the long matches) and high ethical standards. The USBF Board and the tournament organizers have done their best to make this the best trials it can be. Only the players can continue to uphold the ethics, camaraderie and sportsmanship for which US bridge is known worldwide. I ask each of you to keep this in mind over the coming week.

Marty Fleisher, President, USBF

Margin	Winner	Loser	Margin	Winner	Loser	Margin	Winner	Loser
0	10	10	16	15.26	4.74	31	18.25	1.75
1	10.41	9.59	17	15.50	4.50	32	18.40	1.60
2	10.81	9.19	18	15.74	4.26	33	18.55	1.45
3	11.20	8.80	19	15.97	4.03	34	18.69	1.31
4	11.58	8.42	20	16.20	3.80	35	18.83	1.17
5	11.94	8.06	21	16.42	3.58	36	18.97	1.03
6	12.29	7.71	22	16.63	3.37	37	19.10	0.90
7	12.63	7.37	23	16.83	3.17	38	19.22	0.78
8	12.96	7.04	24	17.03	2.97	39	19.34	0.66
9	13.28	6.72	25	17.22	2.78	40	19.46	0.54
10	13.59	6.41	26	17.41	2.59	41	19.58	0.42
11	13.89	6.11	27	17.59	2.41	42	19.69	0.31
12	14.18	5.82	28	17.76	2.24	43	19.80	0.20
13	14.46	5.54	29	17.93	2.07	44	19.90	0.10
14	14.74	5.26	30	18.09	1.91	45	20	0
15	15.00	5.00						

USBF 9 Board VP Scale

USBF President

Marty Fleisher

USBF

Vice President

Josh Parker

USBF COO & Secretary

Jan Martel

USBF CFO

Stan Subeck

Directors - USBC

McKenzie Myers

Gary Zeiger

Operations Manager

McKenzie Myers

Appeals Administrators

Suzi Subeck, Chairman

Bill Arlinghaus

Martha Katz

Appeals Panel:

David Berkowitz

Huub Bertens

Bart Bramley

Tom Carmichael

Gary Cohler

Ish Del Monte

Mark Feldman

Ron Gerard

Fred Gitelman

Bob Hamman

Geoff Hampson

Mike Kamil

Ralph Katz

Oren Kriegel

Chip Martel

Beth Palmer

Pepsi Pszczola

Eric Rodwell

Debbie Rosenberg

Michael Rosenberg

Kerri Sanborn

Aaron Silverstein

Danny Sprung

Lew Stansby

Adam Wildavsky

VuGraph Organizer

Jan Martel

Bulletin Editor

Suzi Subeck

Photographer

Peg Kaplan

Local Hospitality Chairs

Susie Miller

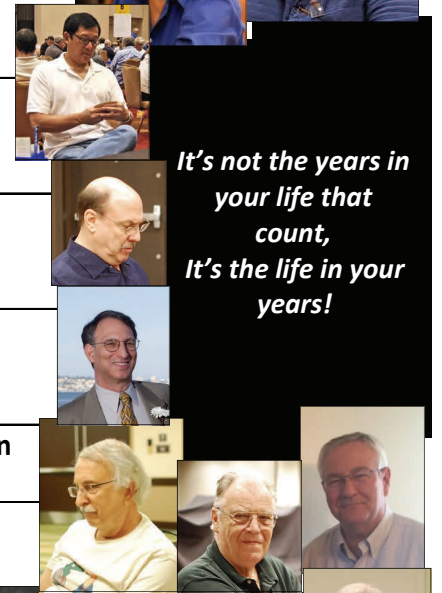
Lisa Berkowitz

Martha Katz

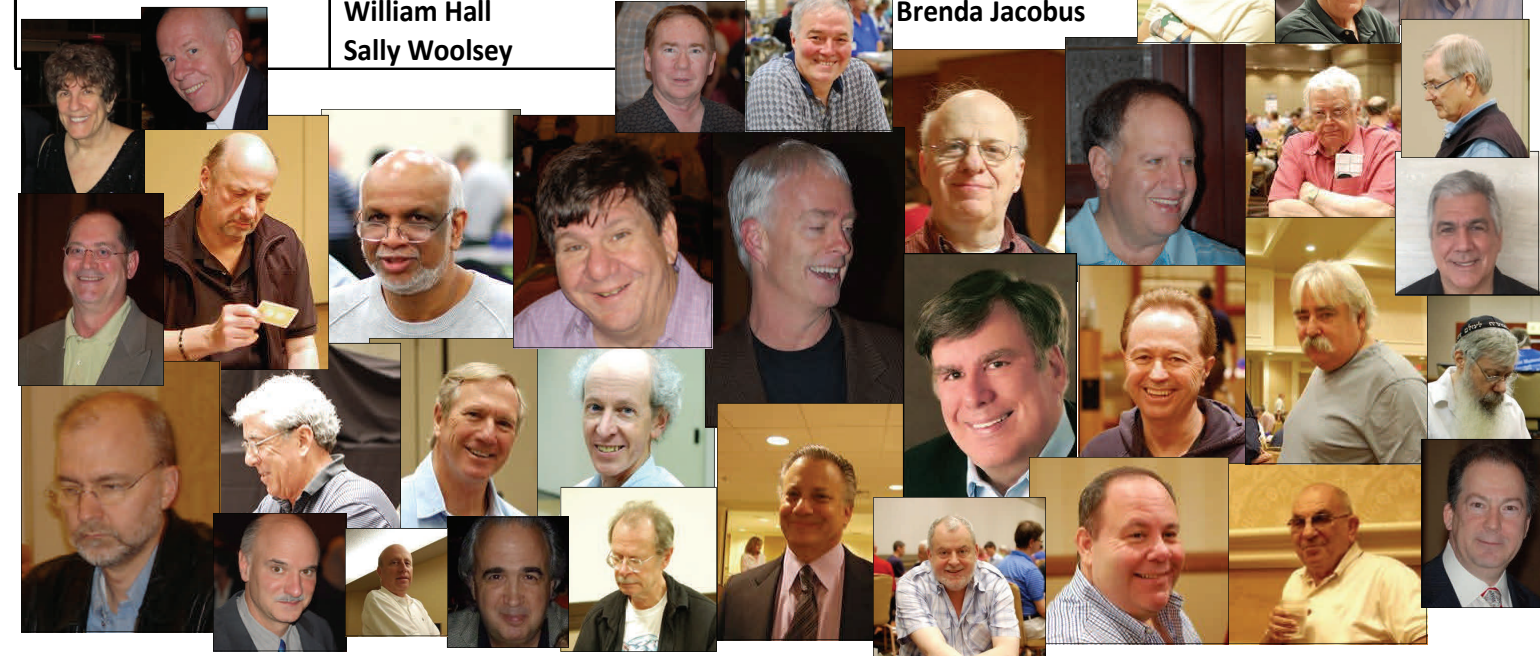
2017 USSBC Teams

listed in seeding point order

Hamman, NPC	Hemant Lall Zia Mahmood Robert Hamman	Reese Milner Steve Garner Bart Bramley
Wolfson	Jeffrey Wolfson, Capt David Berkowitz Michael Becker	Neil Silverman Alan Sontag Allan Graves
Wold	Eddie Wold, Capt Marc Jacobus Dennis Clerkin	Michael Levine Mike Passell Jerry Clerkin
Gupta	Vinita Gupta, Capt Kit Woolsey Steve Robinson	Billy Miller Fred Stewart Peter Boyd
Mahaffey	Jim Mahaffey, Capt Neil Chambers Matthew Granovetter	Sam Lev John Schermer Roger Bates
Lewis	Paul Lewis, Capt Jim Krekorian Doug Doub	Linda Lewis Drew Casen Mark Itabashi
Falk	Allan Falk, Capt Doug Simson Glenn Eisenstein	Jeff Aker John Lusky John Rengstorff
Pollack	Bill Pollack, Capt Mark Feldman Larry Robbins	Ron Rubin Mark Cohen Steve Beatty
Cappelli	Robert Cappelli, Capt David Caprera	Robert Bitterman Anne Brenner
Reynolds	W. Thomas Reynolds, Capt William Hall Sally Woolsey	Lance Kerr Brenda Jacobus



It's not the years in your life that count, It's the life in your years!



ROUND ROBIN			
DAY	DATE	TIME	BOARDS
WEDNESDAY	MAY 17	9:45 AM	CAPTAINS' MEETING IN ROOM 1321
WEDNESDAY	MAY 17	10:00 - 11:20 11:30 - 12:50 1:00 - 2:20 3:45 - 5:05 5:15 - 6:35 6:45 - 8:10	BOARDS 1 - 9 BOARDS 10 - 18 BOARDS 19 - 27 85 MINUTE LUNCH BREAK BOARDS 1 - 9 BOARDS 10 - 18 BOARDS 19 - 27
THURSDAY	MAY 18	10:00 - 11:20 11:30 - 12:50 1:00 - 2:20	BOARDS 1 - 9 BOARDS 10 - 18 BOARDS 19 - 27 100 MINUTE LUNCH BREAK
* THE FINAL 2 MATCHES ARE SEQUESTERED - ONE PAIR ON EACH TEAM MUST PLAY BOTH MATCHES & MUST REMAIN IN THE CLOSED ROOM FOR BOTH MATCHES. NO SCORE COMPARISON ALLOWED.			
QUARTERFINAL & USA2 ROUND OF 32 (KO ON SAME SCHEDULE)			
THURSDAY	MAY 18	4:00 - 6:10 6:20 - 8:30	SEGMENT 1 BOARDS 1-15 SEGMENT 2 BOARDS 16-30
FRIDAY	MAY 19	10:00 - 12:10 12:25 - 2:35 3:45 - 5:55 6:10 - 8:20	SEGMENT 3 BOARDS 1-15 SEGMENT 4 BOARDS 16-30 70 MINUTE LUNCH BREAK SEGMENT 5 BOARDS 1-15 SEGMENT 6 BOARDS 16-30
SEMIFINAL & USA2 ROUND OF 16 (SCHEDULE SOON)			
SATURDAY	MAY 20	10:00 - 12:10 12:25 - 2:35 3:45 - 5:55 6:10 - 8:20	SEGMENT 1 BOARDS 1-15 SEGMENT 2 BOARDS 16-30 70 MINUTE LUNCH BREAK SEGMENT 3 BOARDS 1-15 SEGMENT 4 BOARDS 16-30
SUNDAY	MAY 21	10:00 - 12:10 12:25 - 2:35	SEGMENT 5 BOARDS 1-15 SEGMENT 6 BOARDS 16-30 95 MINUTE LUNCH BREAK
FINAL & USA2 QUARTERFINAL (6 USA2 TEAMS)			
SUNDAY	MAY 21	4:00 - 6:10 6:20 - 8:30	SEGMENT 1 BOARDS 1-15 SEGMENT 2 BOARDS 16-30
MONDAY	MAY 22	10:00 - 12:10 12:25 - 2:35 3:45 - 5:55 6:10 - 8:20	SEGMENT 3 BOARDS 1-15 SEGMENT 4 BOARDS 16-30 70 MINUTE LUNCH BREAK SEGMENT 5 BOARDS 1-15 SEGMENT 6 BOARDS 16-30
USA2 SEMIFINAL			
TUESDAY	MAY 23	10:00 - 12:10 12:25 - 2:35 3:45 - 5:55 6:10 - 8:20	SEGMENT 1 BOARDS 1-15 SEGMENT 2 BOARDS 16-30 70 MINUTE LUNCH BREAK SEGMENT 3 BOARDS 1-15 SEGMENT 4 BOARDS 16-30
WEDNESDAY	MAY 24	10:00 - 12:10 12:25 - 2:35	SEGMENT 5 BOARDS 1-15 SEGMENT 6 BOARDS 16-30 95 MINUTE LUNCH BREAK
USA2 FINAL			
WEDNESDAY	MAY 24	4:00 - 6:10 6:20 - 8:30	SEGMENT 1 BOARDS 1-15 SEGMENT 2 BOARDS 16-30
THURSDAY	MAY 25	10:00 - 12:10 12:25 - 2:35 3:45 - 5:55 6:10 - 8:20	SEGMENT 3 BOARDS 1-15 SEGMENT 4 BOARDS 16-30 70 MINUTE LUNCH BREAK SEGMENT 5 BOARDS 1-15 SEGMENT 6 BOARDS 16-30

Tournament Schedule

Hospitality Suite

The hospitality suite for the 2017 Senior USBC is Suite 2321, on the level above the playing rooms. Players, volunteers, kibitzers, friends and supporters are welcome in the Hospitality Suite during the tournament. Please join hostesses Susie Miller, Lisa Berkowitz & Martha Katz for:

Breakfast each day from 8:00-10:30 am.

Lunch Friday through Tuesday from 1:30-4:00.

Wednesday & Thursday, lunch will be a buffet served in the hotel restaurant.

The Hospitality Suite will be open for Vugraph, casual chit chat, drinks & snacks during the rest of the playing hours and for a short time after the end of play each day.

The Players' Lounge (room 1321) will also be open throughout the tournament. We will have coffee and snacks there during play.



2017 Michael Seamon Junior USBC

The United States Bridge Federation (USBF) is pleased to announce that the 2017 Michael Seamon Junior United States Bridge Championships (JUSBC) will be held December 27-30/31, 2017, at the Hyatt Regency in Atlanta. Players will compete in four categories:

1) open U16 (born in 2003 or later); 2) open U21 (born 1998 or later); 3) open U26 (born 1993 or later); and 4) women U26 (Rona Cup; born 1993 or later).

At least one team in each category will qualify to represent the USA at the World Youth Teams Bridge Championships in China in the summer of 2018 (sending an U16 team will require our having enough chaperones going at their own expense).

Teams may enter with 4, 5, or 6 players; winning teams with fewer than 6 players will augment so that 6-person teams represent the USA in China. Depending on the number of teams entered in each category, an online (BBO) qualifying may be required on one or two weekends in September. Further details and entry forms will be available this summer.

Although the USBF has no designated funds for the Michael Seamon JUSBC, we hope to raise enough money privately to cover most of the expenses (airfare, lodging) for those who play in Atlanta.

The schedule of play in Atlanta will depend on the number of teams competing and will likely be different for the four categories. In all cases we plan for participants to play at least two days before anyone is eliminated. All matches at the JUSBC will be played with screens.

Team Seeding Points

SEED	TEAM NAME	TEAM AVERAGE SEEDING POINTS
1	Hamman, NPC	58.09 SPs
2	Wolfson	44.43 SPs
3	Wold	40.63 SPs
4	Gupta	35.83 SPs
5	Mahaffey	35.12 SPs
6	Lewis	25.52 SPs
7	Falk	17.29 SPs
8	Pollack	15.16 SPs
9	Cappelli	9.71 SPs
10	Reynolds	6.07 SPs

WHEN CAN YOU KIBITZ IN THE PLAYING ROOMS?

You will be able to kibitz at any of the tables during this event. However, you will be subject to the following regulations:

Kibitzers may enter the room **ONLY** at the start of play for a segment. Once play has started, the room will be closed.

A kibitzer who leaves the room may not return until the start of the next session.

Cell phones and other electronic devices are not allowed in the playing rooms, even if they are turned off. Any kibitzer who is found with a cell phone will be evicted and not allowed to kibitz during the **remainder of the tournament.**

When a match is being shown on BBO Vugraph, no kibitzer may sit on the same side of the table as the Vugraph operator.

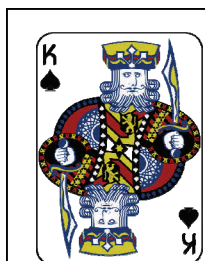
SCREENS

All of the Senior USBC is played with screens. If you've never kibitzed at a table with screens before, you need to know that it is quite different from kibitzing at a regular table. You need to be seated at an "open" corner of the table (not next to the screen) in order to see much, and once there are 4 kibitzers at a table it will be very hard for additional kibitzers to see.

USBF KIBITZING RULES

The USBF **General Conditions of Contest** contain specific rules about kibitzers. They are designed to promote security at the tournament and are set forth in the conditions of contest section labeled "Security." They are:

- a. During any use of duplicated boards across multiple matches, Kibitzers must select one table for kibitzing and may not move to any other table during a session or segment.
- b. Kibitzers may not speak with players, must watch only one hand at a time, may not sit in such a position as to see more than one hand at a time, may not sit in such a position as to see a computer screen in use for Internet broadcast, must check communication devices with the Director, cannot call attention to irregularities other than a board being placed incorrectly on the table (arrow positioning), but may serve as witnesses to a possible irregularity.
- c. Kibitzers must enter the playing room before play commences. Kibitzers are required to remain until the segment of play is completed at the table they are watching or to leave the playing area entirely. Kibitzers are expected to abide by the same rules as the players regarding leaving the room (e.g. be escorted to the restroom).
- d. Except as expressly provided in these conditions and appendices, NPC's shall be subject to the WBF General Conditions, Section 17.
- e. No one other than the Internet broadcast personnel and Tournament Directors may watch any computer screen or any other mechanism for enabling the Internet broadcast at any time in either the Closed or the Open Room.
- f. These rules may be revised in specific instances by the DICs for the orderly running of the event.



ALERT!
On many of the boards,
cards slide between pockets
when being carried.
Please count
your cards on
every hand!

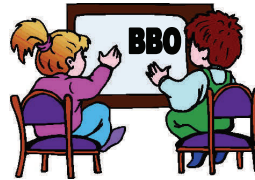
Vugraph

All of the 2017 Senior USBC will be covered on BBO Vugraph. We hope to cover all of the tables in USA1 from the Quarterfinals on, as well as all the tables in the USA2 Semifinal & Final. If we have enough operators, we will also cover some earlier USA2 rounds. 2 tables will have streaming video, and the other tables will have video uploaded after the day is over. To watch the Vugraph online, go to the **BBO website** where you can log on directly from your browser, go to "Vugraph" and choose which table to watch. If you prefer to use the Windows version of BBO, after you log on, click on the button or line labeled VUGRAPH and you'll be able to choose which of the Senior USBC matches you want to watch.

There will usually be a "yellow" user on BBO called USBF. If you have general questions, please ask USBF, not one of the hard-working Vugraph Operators, who may not have time to respond to private messages. Thank you.

Each day's schedule is about the same (these are Chicago times; to see the times for your time-zone, go to the **BBO Vugraph schedule site**):

- 10:00 - 12:10: Segment 1
- 12:20 - 2:30: Segment 2
- 3:45 - 5:55: Segment 3
- 6:10 - 8:20: Segment 4



On Thursday, Sunday and Tuesday, when a new match starts in the middle of the day, the third and fourth segments will be at:

- 4:00 - 6:10: Segment 3
- 6:20 - 8:30: Segment 4

Segments 2 and 4 may start a little earlier or later than they are scheduled depending on when segments 1 and 3 end.

All of the teams will play the same boards, and for security reasons, if the matches do not all start at the same time, we will not start the Vugraph broadcast until all matches have started play.

Hints for BBO viewers

Useful information is available to browser BBO users [and perhaps some mobile bbo users]

click on the name of the table/event name will provide a pop-up that:

- * displays the BBO Schedule for the specific vugraph event – calculated for the time zone of the viewer's electronic device
 - * has a link to the home page for event
- click on a player name will usually provide a pop-up that
- * displays a picture of the player
 - * shows links to System Summary Forms (SSFs), Convention Cards (CCs), and biographical information

VIDEO: For those who use the original windows BBO - when you enter a room that has video, BBO will welcome you and broadcast the link to video. If video starts after you've entered the room or you forgot to grab the information, then exit the table and re-enter to see the automatic display. All other users will have a "Video" button at the bottom of the table. Just push the button and click on the link provided.

No Electronic Devices are Permitted in the Playing Area.

This applies to players AND kibitzers.

Severe penalties will be assessed for violation of this rule.

Please turn off all cell phones and check them at the door.

The USBF reserves the right to wand anyone entering the playing field.



Some Nearby Suggestions For Your Dining Pleasure



Fresh 1800
1800 E Golf Rd
0.0 miles from Hyatt Regency Schaumburg

Elliott's Off Broadway Deli
1900 E Golf Rd Ste 116
0.1 miles from Hyatt Regency Schaumburg

Olive Garden
1925 E Golf Rd
0.1 miles from Hyatt Regency Schaumburg

LongHorn Steakhouse
1901 E Golf Rd
0.1 miles from Hyatt Regency Schaumburg

Ram Restaurant and Brewery
1901 McConnor Pkwy
0.2 miles from Hyatt Regency Schaumburg

Joe's Crab Shack
2000 E Golf Rd
0.2 miles from Hyatt Regency Schaumburg

Kuma's Corner
1570 E Golf Rd Wood Field Mall
0.2 miles from Hyatt Regency Schaumburg

The Cheesecake Factory
53 Woodfield Rd
0.4 miles from Hyatt Regency Schaumburg

Garrett Popcorn Shops
5 Woodfield Mall, Woodfield Mall, Ground Floor
0.3 miles from Hyatt Regency Schaumburg

Wildberry Pancakes and Cafe
1383 N Meacham Rd
0.6 miles from Hyatt Regency Schaumburg

Maggiano's Little Italy Schaumburg
Streets of woodfield
0.3 miles from Hyatt Regency Schaumburg

Wetzel's Pretzels
5 Woodfield Mall
0.3 miles from Hyatt Regency Schaumburg

Chill Bubble Tea
5 Woodfield Mall #F-319
0.3 miles from Hyatt Regency Schaumburg

Texas de Brazil
5 Woodfield Mall D312
0.5 miles from Hyatt Regency Schaumburg

Nestle Toll House Cafe
5 Woodfield Mall
0.3 miles from Hyatt Regency Schaumburg

A&W Restaurant
5 Woodfield Mall F118
0.3 miles from Hyatt Regency Schaumburg

IKEA Restaurant
1800 McConnor Pkwy
0.3 miles from Hyatt Regency Schaumburg

Weber Grill Restaurant
1010 N Meacham Rd
0.7 miles from Hyatt Regency Schaumburg

California Pizza Kitchen
1550 E Golf Rd
0.3 miles from Hyatt Regency Schaumburg

Seasons 52
1770 E Higgins Rd
0.9 miles from Hyatt Regency Schaumburg

Cold Stone Creamery
5 Woodfield Drive
0.3 miles from Hyatt Regency Schaumburg

Wildfire
1250 E Higgins Rd
1.1 miles from Hyatt Regency Schaumburg

Subway
1478 E Golf Rd Plaza Drive & Meacham Road
0.4 miles from Hyatt Regency Schaumburg

Arby's
1564 E Golf Rd
0.4 miles from Hyatt Regency Schaumburg

Maggiano's Little Italy
1901 East Woodfield Rd.
0.6 miles from Hyatt Regency Schaumburg

Panda Express
3 Woodfield Mall
0.4 miles from Hyatt Regency Schaumburg

Level 257
2 Woodfield Mall Unit a
0.4 miles from Hyatt Regency Schaumburg

(Continued from page 7)

Hooters
1705 E Golf Rd
0.4 miles from Hyatt Regency Schaumburg

P.F. Chang's
Woodfield Mall 5 Woodfield Mall Space D313
0.5 miles from Hyatt Regency Schaumburg

Jason's Deli
1530 McConnor Pkwy
0.5 miles from Hyatt Regency Schaumburg
Cuisines: American, Soups, Delicatessen

Portillo's
611 E Golf Rd
1.5 miles from Hyatt Regency Schaumburg
Cuisines: Italian, American, Fast Food

Rainforest Cafe
D121 Woodfield Mall
0.5 miles from Hyatt Regency Schaumburg
Cuisines: American

Cafe Zupas
1422 E Golf Rd
0.6 miles from Hyatt Regency Schaumburg
Cuisines: Cafe, Soups, Fast Food

Surf City Squeeze
E117 Woodfield Mall
0.4 miles from Hyatt Regency Schaumburg

Chevys Fresh Mex
1180 Plaza Dr
0.5 miles from Hyatt Regency Schaumburg
Cuisines: Mexican, Southwestern

TGI Friday's
1695 E Golf Rd
0.5 miles from Hyatt Regency Schaumburg
Cuisines: American, Bar, Pub

Westwood Tavern
1385 N Meacham Rd
0.6 miles from Hyatt Regency Schaumburg
Cuisines: American, Bar, Pub

Hooters - Schaumburg
1110 Perimeter Dr
0.5 miles from Hyatt Regency Schaumburg
Cuisines: American, Bar, Pub

Egg Harbor Cafe
1310 American Ln Meacham Point
0.8 miles from Hyatt Regency Schaumburg
Cuisines: American, Cafe

Argo Tea
5 Woodfield Mall
0.5 miles from Hyatt Regency Schaumburg
Cuisines: Cafe, Healthy

Morton's the Steakhouse
1470 McConnor Pkwy
0.6 miles from Hyatt Regency Schaumburg
Cuisines: American, Steakhouse

Great Steak
5 Woodfield Mall
0.5 miles from Hyatt Regency Schaumburg
Cuisines: Steakhouse

Granite City Food and Brewery
801 N Plaza Dr
0.7 miles from Hyatt Regency Schaumburg
Cuisines: American, Bar, Pub

Giordano's
930 N Meacham Rd
0.7 miles from Hyatt Regency Schaumburg
Cuisines: Italian, Pizza

Moretti's Ristorante and Pizzeria
1893 Walden Office Sq
Cuisines: Italian, Pizza, American

Qdoba Mexican Grill
1408 E Golf Rd
0.6 miles from Hyatt Regency Schaumburg
Cuisines: Mexican, Fast Food

Shaw's Crab House
1900 East Higgins Road
1.0 miles from Hyatt Regency Schaumburg
Cuisines: American, Seafood, Sushi

Sam & Harry's Steak House
1551 Thoreau Dr N Renaissance Schaumburg Convention
0.7 miles from Hyatt Regency Schaumburg
Cuisines: American, Steakhouse

Stonewood Ale House
601 Mall Drive
0.9 miles from Hyatt Regency Schaumburg
Cuisines: American, Bar, Pub

ZEAL Restaurant
680 Mall Dr
0.8 miles from Hyatt Regency Schaumburg
Cuisines: Italian, American, Steakhouse

Panera Bread
1140 N Plaza Dr
0.6 miles from Hyatt Regency Schaumburg
Cuisines: Soups, Cafe, Fast Food



(Continued from page 8)

Noodles & Company
1400 N Meacham Rd
0.6 miles from Hyatt Regency Schaumburg
Cuisines: Japanese, Asian, Soups

Sarku Express
1408 E Golf Rd
0.6 miles from Hyatt Regency Schaumburg
Cuisines: Asian

Corner Bakery Cafe
1901 E Woodfield Rd
0.7 miles from Hyatt Regency Schaumburg
Cuisines: American, Cafe, Healthy, Soups

Pie Five Pizza Co.
1428 N Meacham Rd
0.6 miles from Hyatt Regency Schaumburg
Cuisines: Pizza, Fast Food

Five Guys
1424 N Meacham Rd
0.6 miles from Hyatt Regency Schaumburg
Cuisines: American, Fast Food

Big Bowl Schaumburg
1950 E Higgins Rd
0.9 miles from Hyatt Regency Schaumburg
Cuisines: Chinese, Asian, Thai

Grillhouse by David Burke
1301 American Lane
0.8 miles from Hyatt Regency Schaumburg
Cuisines: American, Soups, Steakhouse

Buffalo Wild Wings
1430 N Meacham Rd
0.7 miles from Hyatt Regency Schaumburg
Cuisines: Bar, Pub, American

Einstein Bros. Bagels
1422 N Meacham Rd
0.7 miles from Hyatt Regency Schaumburg

Roti Modern Mediterranean
892 N Meacham Rd
0.8 miles from Hyatt Regency Schaumburg
Cuisines: Middle Eastern, Lebanese, Fast Food, Mediterranean, Greek

Jimmy John's
1420 N Meacham Rd
0.6 miles from Hyatt Regency Schaumburg

The Beer Market
888 N Meacham Rd
0.8 miles from Hyatt Regency Schaumburg
Cuisines: American, Bar, Pizza, Pub

Chicago Prime Italian
1370 Bank Dr
1.0 miles from Hyatt Regency Schaumburg
Cuisines: Italian

The Clubhouse
1301 American Lane
0.8 miles from Hyatt Regency Schaumburg

Starbucks
1018 N Meacham Road
0.7 miles from Hyatt Regency Schaumburg

Meatheads
601 N Martingale Rd Streets of Woodfield Shopping Ctr
0.8 miles from Hyatt Regency Schaumburg
Cuisines: American, Fast Food

Sakura Restaurant Woodfield
4011 Algonquin Rd
0.7 miles from Hyatt Regency Schaumburg
Cuisines: Sushi, Japanese

Potbelly Sandwich Shop
880 N Meacham Rd
0.8 miles from Hyatt Regency Schaumburg

La Charanga Mexican Restaurant
4003 Algonquin Rd
0.8 miles from Hyatt Regency Schaumburg
Cuisines: Mexican

Jamba Juice
601 N Martingale Rd Ste 310
0.8 miles from Hyatt Regency Schaumburg

Benjyehuda
1022 N. Meacham
0.7 miles from Hyatt Regency Schaumburg

Starbucks
601 N Martingale Rd Streets Of Woodfield
0.8 miles from Hyatt Regency Schaumburg

Jersey Mikes
601 N Martingale Rd
0.8 miles from Hyatt Regency Schaumburg
Cuisines: Pizza

On the Border
870 N Meacham Rd
0.8 miles from Hyatt Regency Schaumburg
Cuisines: Mexican, Southwestern

(Continued from page 9)

Tokio Pub
1900 E Higgins Rd
1.0 miles from Hyatt Regency Schaumburg
Cuisines: Asian, Japanese, Sushi, Pub

Stadium
4015 ALGONQUIN RD
0.8 miles from Hyatt Regency Schaumburg

Finn McCool's
1941 E Algonquin Rd
0.8 miles from Hyatt Regency Schaumburg
Cuisines: American

Gameworks
601 N Martingale Rd Ste 115
0.8 miles from Hyatt Regency Schaumburg
Cuisines: American, Bar, Pub

Gather Bar
1551 Thoreau Dr N Renaissance Convention Center Hotel
0.8 miles from Hyatt Regency Schaumburg
Cuisines: Bar, Pub, American

Gaylord Fine Indian Cuisine
555 Mall Dr
0.9 miles from Hyatt Regency Schaumburg
Cuisines: Indian

Wintergarden Cafe
1551 Thoreau Dr N Renaissance Convention Center Hotel
0.8 miles from Hyatt Regency Schaumburg

Taco Bell
650 Mall Dr
0.9 miles from Hyatt Regency Schaumburg
Cuisines: Mexican

Benihana
1200 E Higgins Rd
1.2 miles from Hyatt Regency Schaumburg
Cuisines: Japanese, Sushi, Asian

Mc Kenna's Restaurant
3405 Algonquin Rd
0.9 miles from Hyatt Regency Schaumburg
Cuisines: American, Bar, Pub

Punch Bowl Social
1100 American Ln
0.9 miles from Hyatt Regency Schaumburg
Cuisines: American, Gastropub

Red Lobster
800 E Golf Rd
1.3 miles from Hyatt Regency Schaumburg
Cuisines: American, Seafood

Chef Ping
1755 Algonquin Rd
1.7 miles from Hyatt Regency Schaumburg
Cuisines: Chinese, Asian

Egg'lectic
2905 Algonquin Rd
1.2 miles from Hyatt Regency Schaumburg
Cuisines: American

La Mirage
3223 Algonquin Rd
1.0 miles from Hyatt Regency Schaumburg

Chicago Prime Steakhouse
1444 E Algonquin Rd
1.2 miles from Hyatt Regency Schaumburg
"Cuisines: American, Steakhouse

Entre Bar & Grill
1725 E Algonquin Rd
0.9 miles from Hyatt Regency Schaumburg
Cuisines: Italian, Mexican, Chinese, American, Indian

Portillo's
1900 W Golf Rd
1.6 miles from Hyatt Regency Schaumburg
Cuisines: American, Fast Food

Chick-fil-A
935 E Golf Rd between Plum Grove Rd & Commons Dr
1.2 miles from Hyatt Regency Schaumburg
Cuisines: American, Fast Food

Woo Lae Oak
3201 Algonquin Rd
1.0 miles from Hyatt Regency Schaumburg
Cuisines: Asian, Korean

Big Chef
1602 E Algonquin Rd
1.1 miles from Hyatt Regency Schaumburg
Cuisines: American, Bar, Pizza, Pub

Hong Kong Cafe
1608 E Algonquin Rd
1.1 miles from Hyatt Regency Schaumburg
Cuisines: Chinese, Asian

Embassy Cafe
1933 N Meacham Rd Ste 130
1.1 miles from Hyatt Regency Schaumburg
Cuisines: Delicatessen

Bahama Breeze
406 E Golf Rd
1.8 miles from Hyatt Regency Schaumburg
Cuisines: American, Caribbean, Seafood, Bahamian, Jamaican

(Continued from page 10)

Culver's
1410 E Algonquin Rd
1.2 miles from Hyatt Regency Schaumburg
Cuisines: Fast Food, American

Tilted Kilt
1140 E Higgins Rd
1.2 miles from Hyatt Regency Schaumburg
Cuisines: American, Bar, Pub

Kouzina
795 E Golf Road
1.4 miles from Hyatt Regency Schaumburg
Cuisines: Mediterranean, Greek

Pompei
1261 E Higgins Rd
1.2 miles from Hyatt Regency Schaumburg
Cuisines: Italian

Fuddruckers
436 E Golf Rd
1.8 miles from Hyatt Regency Schaumburg
Cuisines: American, Fast Food

Sake Sushi & Grill
697 E Golf Rd
1.5 miles from Hyatt Regency Schaumburg
Cuisines: Sushi, Asian, Japanese

Minghin Cuisine
1440 Golf Rd Marketplace
1.9 miles from Hyatt Regency Schaumburg
Cuisines: Chinese, Asian

Barnelli's Pasta Bowl
611 E Golf Rd
1.5 miles from Hyatt Regency Schaumburg
Cuisines: Italian, Fast Food
Toscana
1859 W Central Rd
1.7 miles from Hyatt Regency Schaumburg
Cuisines: Italian

La Michoacana Paeteria
2219 W Algonquin Rd
1.4 miles from Hyatt Regency Schaumburg

La Quiringua
#27 of 58 Restaurants in Rolling Meadows
1.4 miles from Hyatt Regency Schaumburg
Cuisines: Mexican

There are many more restaurants within proximity of the playing site. The Schaumburg area is well respected for its great choice of ethnic cuisines and first class steakhouses.

Kibitzer Activities...

The **White Sox** are not in town during the Senior Trials.

The **Cubs** are in town from May 17th-25th. They play Cincinnati through the 18th; Milwaukee through the 21st; and San Francisco through the 25th.

For ticket information, go to Chicago.Cubs.mlb.com.



Woodfield Mall is a shopping mall located in Schaumburg at the intersection of Golf Road and Interstate 290. It is large... has a huge selection of stores... restaurants... movie theaters. It is a great place to take a break, get some exercise walking indoors, or stop for a meal or a snack. If you are sitting out for an entire session, you can even go see a movie.

Not far from the playing site, **Long Grove** is a special little village that retains all the character of its original farming community roots, with historic buildings, cobblestone walks and flowering gardens, set in a secluded rural atmosphere. And now, added to all the traditional favorites, Long Grove has an exciting new mix of attractions, offering contemporary goods and style, cool arts and entertainment, and festive spaces to fulfill the wishes of a whole new generation. For everyday shopping and dining, this is an easy "must-see" trip.

Long Grove is known for its eclectic and artsy shops and eateries and its old-fashioned country setting.

Nestled in historic homes and buildings that date back to the community's roots in the 1800's, Long Grove's many shops specialize in unique gifts, boutiques, exceptional art and home decor, and distinctive menus. Visitors can stroll the cobblestone walks that wind through the historic downtown and enjoy seasonal lush gardens and scenic views. And they can make it a quick trip or a day's outing, shopping and indulging their tastes with a variety of food and bakery products, cafés, and fine eating establishments.

Long Grove Historic Village is located just 35 miles northwest of Chicago, near Routes 53 and 83 north of Lake Cook Road. This little crossroads was settled in the early 1800's by German farmers who came to town to buy their supplies and have their horses shod. The original homes and businesses now bear plaques recognizing their importance to Long Grove's history. The signature covered bridge and the village landmarks in the historic

(Continued on page 12)



(Continued from page 11)

district have all been carefully guarded as the town evolved into a unique and charming destination for visitors. Additional Long Grove merchants and fine restaurants can be found outside of the historic district on Routes 83, 53, and 22.

Long Grove is also known for its fun. Their full schedule of festivals and concerts are among Chicagoland's premier outdoor events. Chocolate Fest in early May, Strawberry Festival in June and Apple Fest in October draw appreciative crowds, as do many other outdoor music and ethnic feasts and events throughout the year. Activities continue right through the holidays with music, winter activities and world-class shopping.

Area Golf Courses

Schaumburg Golf Club -Original Nine
Public - 9 holes
401 N Roselle Rd - Schaumburg
Distance: 1.24 miles

Schaumburg Golf Club -White & Blue
(Tournament)
Public - 18 holes
401 N Roselle Rd - Schaumburg
Distance: 1.24 miles

Highland Woods Golf Course
Public - 18 holes
2775 N Ela Rd - Hoffman Estates
Distance: 1.31 miles

Hilldale Golf Club
Public - 18 holes
1655 Ardwick Dr - Hoffman Estates
Distance: 1.50 miles

Walnut Greens Golf Course
Public - 9 holes
1150 N Walnut Ln - Schaumburg
Distance: 1.64 miles

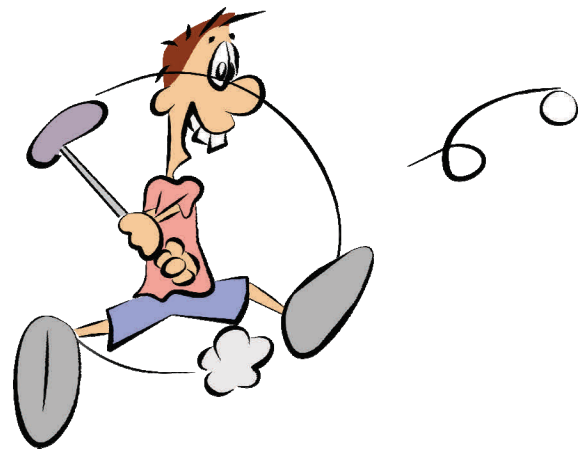
Poplar Creek Country Club
Public - 18 holes
1400 Poplar Creek Dr - Hoffman Estates
Distance: 2.20 miles

Fox Run Golf Links
Public - 18 holes
333 Plum Grove Rd - Elk Grove Village
Distance: 2.68 miles

Palatine Hills Golf Course
Public - 18 holes
512 W Nw Hwy - Palatine
Distance: 4.31 miles

Arlington Lakes Golf Club
Public - 18 holes
1211 S New Wilkes Rd - Arlington Heights
Distance: 4.74 miles

Twin Lakes Golf Course
Public - 9 holes
1200 E Twin Lakes Dr - Palatine
Distance: 5.46 miles



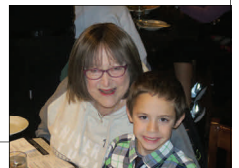
That ball was as out of control as my partner last night at the duplicate game!

From the Editor:

Please be advised to keep this issue of the newsletter. While team lists and schedules will be reprinted in subsequent hard copy editions, other information will not. We do this to make room for new content at a substantial print savings to the organization.

Thank you!!

Suzi



1				7			3	
8	3		6					
		2	9			6		8
6					4	9		7
	9						5	
3		7	5					4
2		3			9	1		
					2		4	3
	4			8				9

Hard Sudoku

Session Entry Fees

In addition to the \$360 entry fee for this event, which all of the teams have paid, there is an entry fee of \$150 per session (there are two sessions a day). This entry fee is to be paid for each stage of competition before the start of that stage. Thus the following amounts will be due for the following stages of competition on or before the following times:

1. Round Robin: session fees of \$450, which was paid in advance with the event fee.
2. USA2 Quarterfinal & USA2 Round of 32: session fees of \$450 for 3 sessions, due before 4:00 on Thursday, May 18th.
3. USA1 Semifinal & USA2 Round of 16: session fees of \$450 for 3 sessions, due before 10:00 am on Saturday, May 20th
4. USA1 Final & USA2 Quarterfinal: session fees of \$450 for 3 sessions, due before 4:00 on Sunday, May 21st
5. USA2 Semifinal: session fees of \$450 for 3 sessions, due before 10:00 am on Tuesday, May 23rd
6. USA2 Final: session fees of \$450 for 3 sessions, due before 4:00 on Wednesday, May 24th

Session fees may be paid by credit card, cash or check. Jan will be available to take your credit card, cash or check before each stage. Please be patient if there are any delays with the credit card process.

Answers to Puzzle No Peeking!

7	4	1	3	8	6	5	2	9
9	5	6	7	1	2	8	4	3
2	8	3	4	5	9	1	7	6
3	1	7	5	9	8	2	6	4
4	9	8	2	6	7	3	5	1
6	2	5	1	3	4	9	8	7
5	7	2	9	4	3	6	1	8
8	3	4	6	2	1	7	9	5
1	6	9	8	7	5	4	3	2

Puzzle Page ...

	Bay	First	Lewis	Stewart	apple	pecan	pumpkin	rhubarb	animal shelter	children's hospital	homeless shelter	veterans	bake sale	craft fair	pancake breakfast	spaghetti dinner
Madeline																
Martha																
Mary																
Melony																
bake sale																
craft fair																
pancake breakfast																
spaghetti dinner																
animal shelter																
children's hospital																
homeless shelter																
veterans																
apple																
pecan																
pumpkin																
rhubarb																

First Name	Last Name	Pie	Charity	Event
Madeline				
Martha				
Mary				
Melony				
-----	Bay	apple	animal shelter	bake sale
-----	First	pecan	children's hospital	craft fair
-----	Lewis	pumpkin	homeless shelter	pancake breakfast
-----	Stewart	rhubarb	veterans	spaghetti dinner

Each year during the holiday season, many of the local charity groups sponsor annual events to raise money. Each event always has a bake table for sweet treats of many varieties available for sale. The bakery goods sold are donated by many of the generous people in the town who support these charitable groups. Each year, Martha and her friends bake an extra pie during their usual holiday baking frenzy to donate to one of these annual events. They each select a different event to donate their pies to and generally each makes a different flavor too. Determine the full name of Martha and her friends, the type of pie each made, the charitable organization each donated the pie to, and the event that each group sponsored.

1. Madeline's last name wasn't First. The bake sale was sponsored by the children's hospital.
2. The pecan pie was not donated to the homeless shelter. Melony, whose last name wasn't Bay, donated her pie to the animal shelter.
3. Ms. Stewart, whose first name wasn't Martha, made the apple pie but she didn't bring it to the craft fair.
4. Mary Lewis didn't donate her pie to the bake sale. The animal shelter did not receive a pecan pie.
5. The pumpkin pie was donated to the veterans but they didn't hold a pancake breakfast.
6. Martha brought her pie to the spaghetti dinner. The rhubarb pie was brought to the craft fair.

Answers puzzle:

Event	Charity	Pie	Last Name	First Name
bake sale	children's hospital	pecan	Bay	Madeline
spaghetti dinner	veterans	pumpkin	First	Martha
craft fair	homeless shelter	rhubarb	Lewis	Mary
pancake breakfast	animal shelter	apple	Stewart	Melony

Limey Jack...

Cheerio, Yanks:

Limey Jack can hardly get back on track for a good kip before you Colonials start the latest revolving door that goes far into the morrow. That Dung cretin is still licking his wounds over the pasting he has taken, yet he will be unabashedly attempting rhymes that will make Oscar Wilde checkers that he has previously perished.

In the Seniors, only 2 will be left behind when the Riverboat sets off for the supper cruise on the Thames. One is Reynolds, playing 5 handed, of course. The other is far more surprising as they have 6 players and loads of talent. That team is Gupta.

Limey Jack is always on call, much to the chagrin of the punters.

Cheers, LJ

Howie Doing...

Welcome to Schaumburg, Seniors.

I hope you'll all be winners.

You'll have to play extremely fast

To make the Early Dinners!

The schedule is grueling,

And you are all so old.

Jan's tuning up the thermostats,

So you won't get too cold.

Lisa B and Susie M

Are fixing you soft lunch.

So teeth or not, you'll be ok.

With snacks that you can munch.

Onto my fine picking.

Eliminating two.

Reynolds has a hodge podge group

Done when round one's through!

The seeding in the Open,

Worked as I thought it should.

If it works here as it worked there

Cappelli's gone for good.

Rely on me. I'm great at this.

Jack is truly slimy.

He guesses while I handicap,

His picks are all pure blimey!

Till Friday... It's Howie Doing... signing off!

Senior Smiles...



The only time I live life in the fast lane anymore is when I have 15 items or less!





David Berkowitz is a World Grand Master and a member of the ACBL Hall of Fame.

He lives with his wife Lisa, an excellent player in her own right, in Boca Raton, Florida, where they enjoy playing golf and watching the Weather Channel.

David and Lisa have two children, both of whom live in New York . Daughter Dana, a lawyer, is married to bridge professional Chris Willenken. Dana has done quite well herself and is well respected both as an attorney and a bridge player; son Michael is the head director at Aces bridge club.

For purposes of this competition, David will be known as “Mr. Lisa” while Mrs. Lisa works very hard with Susie Miller and Martha Katz to provide you with the absolute best in hospitality here at the site.

Meet the Players

As many of you know, bridge is not just a game to me. It has and continues to transform my life. There is something about sitting down to play bridge that brings me an incredible sense of peace and belonging. A few years ago, responding to a call within the bridge community for young blood, I set out with friends to produce my first film. *Double Dummy* is a documentary that captures the game’s unique ability to develop community, exercise the mind, risk some, lose plenty, and ultimately have fun. Now, I’m thrilled to report that we are in the final stages of production and we’re in the early stages of planning our launch.

Why the name *Double Dummy*? To say you played a hand "double dummy" is one of the finest compliments you can pay a bridge player, you’ve played the hand as if you knew all the cards.

During filming, we had several coups. Phillip Alder, the *New York Times* columnist, was covering the 2012 World Youth Teams Championships, which makes up the primary through line of our film. Now, just a few years later, Alder’s column is emblematic of the problem facing bridge today. The game has lost so much traction with younger audiences that even after nearly a century of coverage, the *Times* cancelled Phillip’s column. (Fortunately, we made it in before it disappeared.) Like the newspapers themselves, bridge is facing signs of extinction. Keeping the game alive is one of the primary reasons we’ve made this film. The game is too important to me to let it simply fade into oblivion.

We’re just getting started. Over the next couple of months, I’ll be sharing a few behind the scenes moments on the process of making the film. We do not yet know when, where or how the film will be released.

Finally, I want to thank everyone in the bridge community and our incredible team of filmmakers for making this happen, and thanks to each of you for coming along on the journey with us.

McAllister

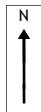


From Last Week's USA2 Final...

Board 16 ♠ 987
 Dealer: W ♥ AK62
 E/W Vul. ♦ 632
 ♣ AJ8

♠ JT42 ♠ AK
 ♥ QT954 ♥ J87
 ♦ 8 ♦ K954
 ♣ 654 ♣ KQT2

♠ Q653
 ♥ 3
 ♦ AQJT7
 ♣ 973



Team Fleisher and Team Diamond played in last week's USA2 Final. Fleisher won and will join Nickell representing the USA at the 2017 World Championships (the Bermuda Bowl) in Lyon, France, in August.

Closed Room			
West	North	East	South
Bathurst	Pepsi	Lall	Rosenberg
Pass	1C	1NT	Double
Redouble (1 minor, both majors, or good spades)	Pass	2C (forced)	Double
2H (both majors)	Double	All Pass	

Open Room			
Moss	Hampson	Grue	Greco
Pass	1D (could be	1NT	Pass
2D (transfer)	Pass	2H	Double
Pass	2NT	Pass	3D
All Pass			

This hand featured one of the many large swings in the Final. Two very different auctions led to two very different results.

In the Open Room, Hampson played a diamond partial. Grue led the SA followed by the SK and shifted to the CQ. Hampson ducked the CQ. The H8 to the queen and ace followed. Hampson finessed against the DK and played a club to his ace. The HK was played, a club discarded from dummy. Hampson took another diamond finesse, Moss discarding a heart. The DA was cashed and Hampson conceded down one.

In the Closed Room, Bathurst played in 2HX. Vulnerable partials doubled into game can be deadly in IMPs. Pepsi led a small heart from the AK62. Dummy's seven held the trick. Bathurst played a heart off dummy to Pepsi's king, Rosenberg discarding the C9. Pepsi tried a small spade, losing to dummy's king. Bathurst played a diamond from dummy, won by Rosenberg's ten. Michael led another spade to dummy's ace and Bathurst played another diamond from dummy, ruffed in his hand. He ruffed a spade, ruffed a diamond, played the club king, ducked around. Bathurst played dummy's last diamond and ruffed in his hand with the queen.

Pepsi overruffed with the king but was hopelessly endplayed. All he had left were one good trump and the ace/jack of clubs. Pepsi cashed his good trump, everyone throwing spades... and led the CA. The thirteenth trick was Pepsi's CJ to dummy's CQ...

Contract making...

12 IMPs to Diamond

Board 18 ♠ J972
 Dealer: E ♥ JT87
 N/S Vul. ♦ J83
 ♣ 62

♠ K53 ♠ A
 ♥ 965432 ♥ A
 ♦ K62 ♦ QT94
 ♣ 4 ♣ KQJT875



♠ QT864
 ♥ KQ
 ♦ A75
 ♣ A93

Closed Room			
West	North	East	South
Bathurst	Pepsi	Lall	Rosenberg
		1C (strong)	1S
2H	Pass	3C	Pass
3H	Pass	3S	Pass
3NT	All Pass		

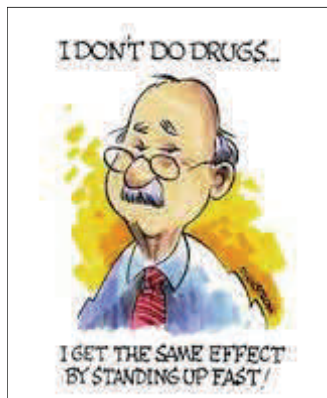
Open Room			
Moss	Hampson	Grue	Greco
		1C (strong)	1S
2C (artificial)	2S	3C	3S
Pass	Pass	4C	Pass
4H	Pass	5C	Double
All Pass			

In the Closed Room, 3NT made easily. Pepsi led a fourth best spade; Bathurst knocked out the CA; Rosenberg continued spades and Bathurst had nine tricks.

In the Open Room, the auction was more active, N/S putting more pressure on E/W by competing to the three level. There was no opportunity to check for a club stopper beyond the singleton ace. E/W, fearful that the ace was not enough bid to the game in clubs. Greco doubled.

Greco led a spade against 5CX. Grue won and played the CQ, won by Greco's ace. Greco switched to hearts. Grue ran four more trumps to see what would be pitched. No one pitched diamonds, the critical suit. Grue played the DT out of hand and ran it to the Hampson's jack. N/S still had a diamond trick and the contract failed by a trick, East/West collecting two diamonds and a club.

11 IMPs to Diamond



Senior Humor

